

# Falany Performing Arts Center

at Reinhardt College



Dueling Vivas™

Photo Credit: Ocala Magazine

2009-2010 Season



*Branson on the Road*  
Oct. 6 & 7, 2009



*Amstel Quartet*  
Oct. 27, 2009



*Bella Sorella, Sopranos*  
Oct. 1, 2009





# programs for everyone

## *At The Falany Performing Arts Center—Jewel of Waleska*

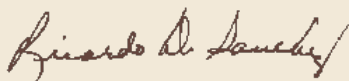
It is truly wondrous to find, in the midst of the green rolling hills of Waleska, in northern Cherokee County, a recital hall with all the architectural beauty and acoustic excellence of Reinhardt College's Floyd A. and Fay W. Falany Performing Arts Center. The Center, which also houses the College's School of Communication Arts and Music, boasts an elegant marble-tiled atrium, the McCamish Broadcast Center and the Eulene Holmes Murray Department of Music.

What the Center has become known for, however, is the concert hall and the exciting variety of programs presented there. Each season, the Center presents programs in four series: the Entertainment Series, the Concert Artist Series, the Georgia Artist Series and the Eulene Holmes Murray Department of Music Series.

The Center is extremely proud of the Concert Artist Series. Artists and ensembles in this series have attained the highest level of recognition by winning awards on their instruments or with their voices all over the world. These great talents provide inspiration and instruction to the College's music majors and enthrall our audiences.

The Entertainment Series has grown over the years and now boasts shows that draw full houses to more than one performance. These programs range from musical revues to plays and comedy acts. This series has evolved into one of our most popular, and last year included Celtic Crossroads, a group of multi-talented young people from Ireland who brought a full house to its feet with thunderous applause at the conclusion of their show. We are proud that this same group will return to get us ready for St. Patrick's Day in March 2010.

The Georgia Artist Series brings the best talent in our state to our audiences, and the Murray Music Department major ensembles play to full houses twice each year. It is difficult indeed to find another venue in North Georgia that presents this much great talent each year. We are proud of our growth and hope that you will be a part of our audiences this year!



Dr. Ricardo D. Sanchez  
Director of the Falany Performing Arts Center

# entertainment series

*Dance, Comedy, Classic Movies, International Culture and More!*

## The Kevin Locke Native Dance Ensemble

A blur of movement, visionary hoop dancing, powerful drums, dazzling fancy dancing, elegant traditional dancing, soaring powwow vocals, ancient flute songs, cultural insight, Northern Plains sign language, authentic stories of the First Nations – The Kevin Locke Native Dance Ensemble presents a performance to remember.

This one-of-a-kind ensemble of American Indian champions and award winners offers a rich variety of American Indian traditions and aesthetics in dance, instrumentals, storytelling, sign language and audience interaction.

*Thursday, September 24, 2009 at 7:30 p.m.  
and Friday, September 25, 2009 at 10 a.m.*

Adults - \$30  
Seniors (55 & older)  
and Children (12 & younger) - \$24

## Lady Bird, Pat & Betty – Tea For Three

Lady Bird, Pat & Betty - Tea for Three reveals a gallery of intimate portraits of three remarkable, radically different First Ladies. We discover each at a threshold moment in her life, and learn the personal cost of what Pat Nixon called “the hardest unpaid job in the world.”

Emmy Award-winning actress Elaine Bromka, with 30 years in film, television, Broadway and Off-Broadway, starred opposite Rich Little in the PBS show “The Presidents” and impersonated the last eight First Ladies. Intrigued by their stories, she went on to collaborate with playwright Eric H. Weinberger, focusing on Lady Bird Johnson, Pat Nixon and Betty Ford.

*Friday, November 13, 2009 at 7:30 p.m.*

Adults - \$30  
Seniors (55 & older)  
and Children (12 & younger) - \$24



## The Shoemaker and the Christmas Elves

The Shoemaker and the Christmas Elves is a heartwarming holiday musical! Join us as Theatre IV takes a yuletide spin on the classic Brothers Grimm’s fairy tale. The fun begins when the poor shoemaker and his wife are visited by Christmas elves on assignment from Santa. Delight in this magical story as we all learn the true meaning of Christmas.

Theatre IV, founded in 1975, is internationally acclaimed for excellence as a theatre for young audiences. Theatre IV performs its plays for nearly 2 million students, parents and teachers each year throughout 38 states and the District of Columbia.

*Tuesday, December 8, 2009 at 7 p.m.*

Adults - \$20  
Seniors (55 & older)  
and Children (12 & younger) - \$16



**B**ranson On The Road - Music, Laughs and Fun for Everyone!  
In the same tradition as the traveling road shows during the glory days of the Grand Ole Opry and the Louisiana Hayride, Branson On The Road features **Classic Country, Hilarious Comedy, Bluegrass, Rockabilly and Hand Clapping Gospel.**

Co-host Debbie Horton is a polished musician and songwriter. She holds the distinction of being the only woman to play lead guitar for the legendary Johnny Cash. For more than 22 years, Debbie held a personal relationship with Johnny, and today dedicates a portion of the Branson On The Road show to a Johnny Cash tribute.

Brian Capps is an expert uptight slap bass player and singer, reminiscent of the days of Marty Robbins and Hank Williams. His recent recording reached #6 on the Americana Charts.

Co-host Donnie Write has been a part of the Branson music scene for more than 40 years with countless performances at the top theatres in Branson. His talents have earned him several appearances at the Grand Ole Opry in Nashville and a Lifetime Honors Award nomination from the National Endowment for the Arts in Washington, D.C.

*Tuesday, October 6, 2009 at 7:30 p.m.*

*Wednesday, October 7, 2009 at 3 p.m.*

Adults - \$30

Seniors (55 & older)

and Children (12 & younger) - \$24

## entertainment series



*Conversations with Robert Osborne*  
Jan. 10, 2010

### Conversations with Robert Osborne

Robert Osborne has been the primetime host and anchor of “Turner Classic Movies” television network since TCM made its on-air debut in April 1994. Since 1977 he has also been a writer for the daily show business trade publication “The Hollywood Reporter” and in 1982 he began writing the paper’s lead column “Rambling Reporter,” which covers all aspects of the movies, television and Broadway.

For TCM, in addition to hosting four primetime movies seven days per week, he also hosts special one-on-one “Private Screening” interviews which have so far included numerous legendary filmmakers such as Lauren Bacall, Angela Lansbury, Shirley MacLaine, three famous Janes (Fonda, Russell and Powell), the late Betty Hutton, Anthony Quinn, Jack Lemmon and Robert Mitchum, also producer Walter Mirisch and directors Sidney Lumet, Stanley Donen and Norman Jewison. Osborne also co-hosts TCM’s “Guest Programmer” franchise. Mr. Osborne shares his perspectives on many of the films shown on Turner Classic Movies, including film clips.

*Sunday, January 10, 2010 at 3 p.m.*

Adults - \$30

Seniors (55 & older)

and Children (12 & younger) - \$24



*Duelling Divas™*  
*Musical Comedy Opera*  
*Feb. 25 & 26, 2010*





*Celtic Crossroads*  
*March 9, & 10, 2010*

## Duelling Divas™

Baroness Vladka von Loudenstimme has had a long career on the opera stage but for how much longer is anyone's guess. She's got the pipes but she likes to soak them in booze whenever she can – as in during every performance. So she hires the younger Southern belle Gwendoline Josephine Bellevoix Bouvier, who fancies herself French and cultured, but who grew up in Boar Tush, La., to sing for the audience so she can sprint off stage for a nip.

One pianist named Paige Turner, 18 costumes, a horned helmet, spear, light saber and a lotta Puccini later, the diva duet becomes a duel. The aim is laughter. That's the premise of Duelling Divas™, a comedic entrée into the world of grand opera.

*Thursday, February 25, 2010 at 7:30 p.m.*

*Friday, February 26, 2010 at 7:30 p.m.*

Adults - \$30

Seniors (55 & older)

and Children (12 & younger) - \$24

## Celtic Crossroads

Music at the Crossroads has been critically acclaimed as one of the best stage music shows to come from Ireland. This magical display of music incorporates seven world-class musicians, playing an array of both traditional and non-traditional instruments on stage, creating a truly incredible and unforgettable musical experience. This show returns to the Falany Performing Arts Center to capture your imagination as it takes you on a voyage of discovery of Irish traditional music, from its roots, through other genres in its musical family, such as gypsy, bluegrass, folk, classical and jazz. Some people are not aware that many of the world's genres of music were significantly influenced by traditional Irish music. Ireland's musical influence has spread throughout the world, but this is hardly a surprise given the central role music has always played in Irish life.

*Tuesday, March 9, 2010 at 7:30 p.m.*

*Wednesday, March 10, 2010 at 7:30 p.m.*

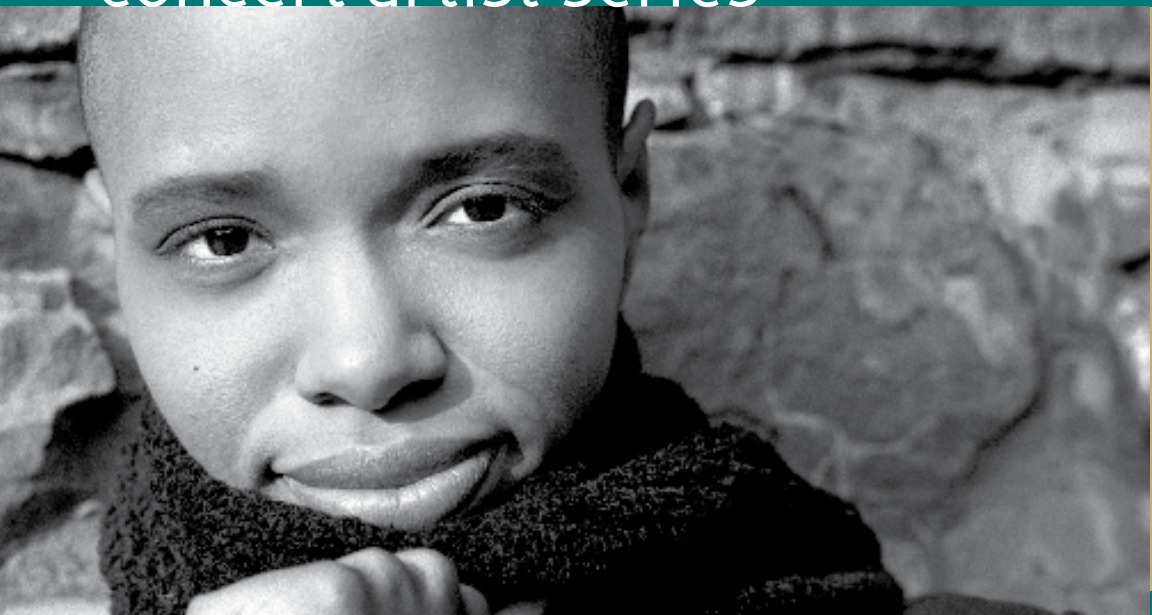
Adults - \$30

Seniors (55 & older)

and Children (12 & younger) - \$24



## concert artist series



**K**ellylee Evans, 2007 Juno and Gemini Award-nominated singer-songwriter, is a unique voice in the urban-jazz world, and many of today's top musicians have taken notice. With a smooth style that slides through jazz, soul, R & B, blues and world music rhythms, Kellylee's calming sound speaks volumes; rich, soothing, robust and energizing.

With a songwriting talent being compared to Elvis Costello, Aimee Mann and Ron Sexsmith, this eclectic artist ignites inspiration. From the sultry "What About Me?" to the bluesy "I Don't Think I Want To Know", to the reggae-flavored "Let's Call A Truce Tonight" and sexy poetical Spanish vibe of "Rapunzel", Kellylee's album, *Fight or Flight?* is an eclectic and focused effort, held together by her rich, expressive, effortless vocal range.

*Thursday, February 18, 2010 at 7:30 p.m.*

Adults - \$25

Seniors (55 & older)

and Children (12 & younger) - \$20

## Bella Sorella

Bella Sorella – Nova and Susanna Jiménez (sopranos) with piano and violin accompaniment – is an award-winning soprano ensemble that combines classical and contemporary styles in melodic and powerful duets. Bella Sorella's unique music, magnetic stage presence and remarkable personal story has earned them acclaim and recognition throughout California and abroad.

With music that spans more than 300 years and seven languages, Bella Sorella has dazzled audiences throughout Northern California in live performances at Villa Montalvo, the Empire Plush Room, the Little Fox Theater, El Campanil Theatre, Community Concerts Concord, AT&T Park, Saint Joseph Cathedral, Santa Clara University, Mission Santa Clara, San José State University and the San José Italian Festa. They've given live television performances on NBC in San Diego and the Bay Area's "Bruce Latimer Show", the longest-running television variety show in the United States. Industry professionals have already taken notice of this spectacular ensemble. The Los Angeles Music Awards unanimously selected Bella Sorella as the 2007 Vocal Group of the Year.

*Thursday, October 1, 2009 at 7:30 p.m.*

Adults - \$25

Seniors (55 & older)

and Children (12 & younger) - \$20



*Bella Sorella  
Oct. 1, 2009*



# year at a glance

## August 2009

*Friday, August 28, 2009 at 7:30 p.m.*  
Hotlanta Dixieland Jazz Band

## September 2009

*Thursday, September 10, 2009 at 7:30 p.m.*  
D'Amore Duo (guitar & oboe)



*Sunday, September 13, 2009 at 3 p.m.*  
Un-Reconstructed Band

*Thursday, September 24, 2009 at 7:30 p.m.*  
*Friday, September 25, 2009 at 10 a.m.*  
Kevin Locke Native Dance Ensemble

## October 2009

*Thursday, October 1, 2009 at 7:30 p.m.*  
Bella Sorella

*Tuesday, October 6, 2009 at 7:30 p.m.*  
Branson on the Road

*Wednesday, October 7, 2009 at 3 p.m.*  
Branson on the Road

*Thursday, October 22, 2009 at 7:30 p.m.*  
Karen Parks, Soprano

*Tuesday, October 27, 2009 at 7:30 p.m.*  
Amstel Quartet

## November 2009

*Thursday, November 5, 2009 at 7:30 p.m.*  
Reinhardt College Concert Choir

*Tuesday, November 10, 2009 at 7:30 p.m.*  
Reinhardt College Jazz Ensemble

*Friday, November 13, 2009 at 7:30 p.m.*  
“Lady Bird, Pat & Betty – Tea for Three”

*Sunday, November 15, 2009 at 3 p.m.*  
Lucktenberg Chamber Ensemble  
“A Celebration of Haydn”

*Thursday, November 19, 2009 at 7:30 p.m.*  
Reinhardt College Wind Ensemble

*Monday, November 23, 2009 at 7:30 p.m.*  
Reinhardt College Symphony Orchestra

## December 2009

*Thursday, December 3, 2009 at 7:30 p.m.*  
Christmas Concert

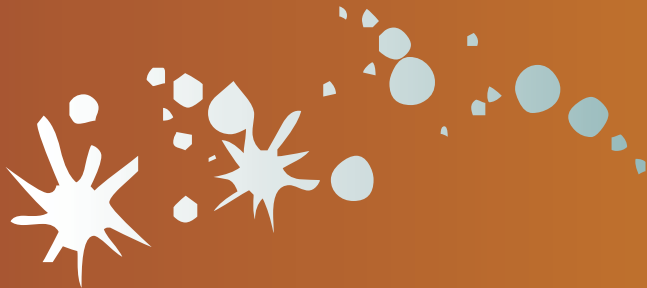
*Friday, December 4, 2009 at 7:30 p.m.*  
Christmas Concert



*Saturday, December 5, 2009 at 7:30 p.m.*  
Christmas Concert

*Tuesday, December 8, 2009 at 7 p.m.*  
The Shoemaker & the Christmas Elves

*Friday, December 11, 2009 at 7:30 p.m.*  
Golden Bells of Atlanta



## January 2010

*Sunday, January 10, 2010 at 3 p.m.*  
Conversations with Robert Osborne

*Tuesday, January 19, 2010 at 7:30 p.m.*  
Escher Trio

*Saturday, January 30, 2010 at 7:30 p.m.*  
The Great American Rock & Roll Revival

*Sunday, January 31, 2010 at 3 p.m.*  
The Great American Rock & Roll Revival

## February 2010

*Saturday, February 6, 2010 at 7:30 p.m.*  
The Great American Rock & Roll Revival

*Sunday, February 7, 2010 at 3 p.m.*  
The Great American Rock & Roll Revival

*Thursday, February 11, 2010 at 7:30 p.m.*  
Michael O'Neal Chamber Singers

*Thursday, February 18, 2010 at 7:30 p.m.*  
Kellylee Evans

*Thursday, February 25, 2010 at 7:30 p.m.*  
Duelling Divas™ – Opera With a Twist

*Friday, February 26, 2010 at 7:30 p.m.*  
Duelling Divas™ – Opera With a Twist

## March 2010

*Tuesday, March 9, 2010 at 7:30 p.m.*  
Celtic Crossroads

*Wednesday, March 10, 2010 at 7:30 p.m.*  
Celtic Crossroads

*Saturday, March 13, 2010 at 7:30 p.m.*  
Redeemer Piano Ensemble

*Sunday, March 21, 2010 at 3 p.m.*  
George Lucktenberg Solo Recital

## April 2010

*Thursday, April 15, 2010 at 7:30 p.m.*  
Reinhardt College Wind Ensemble

*Sunday, April 18, 2010 at 3 p.m.*  
Reinhardt College Concert Choir

*Monday, April 19, 2010 at 7:30 p.m.*  
Reinhardt College Symphony Orchestra

*Thursday, April 22, 2010 at 7:30 p.m.*  
Reinhardt College Jazz Ensemble



## May 2010

*Saturday, May 8, 2010 at 7:30 p.m.*  
Big Chicken Barbershop Chorus



*Amstel Quartet, Oct. 27, 2009*

## concert artist series

### The D'Amore Duo

The D'Amore Duo brings together the outstanding young virtuosos American guitarist William Feasley and Russian oboist Vladimir Lande. In performances marked by the distinct coloring of their contrasting instruments and musical heritage, they create with a musical vitality that sparkles with insight and originality. The D'Amore Duo's repertoire encompasses a variety of styles and influences spanning more than 300 years of original music for plucked string and double reed.

William Feasley's imaginative new arrangements of classics ranging from Telemann and Bach to Vaughan Williams and Scott Joplin are further complemented by exciting new music written expressly for the duo's own unique talents.

Winners of the 1990 Baltimore Chamber Music Awards and the 1993 Montpelier Recitalist Competition, The D'Amore Duo is gaining recognition as a popular component of many chamber music series, and their workshops, masterclasses and children's programs are renowned.

*Thursday, September 10, 2009 at 7:30 p.m.*

Adults - \$25

Seniors (55 & older)

and Children (12 & younger) - \$20

### Amstel Quartet

"The men of the Amstel have no fear," exclaimed the Dutch press about The Amstel Quartet, winner of the 2006 Concert Artists Guild International Competition. Its performances are riveting, filled with high energy, emotion and infectious dynamism. Its repertoire incorporates traditional works for saxophone quartet, contemporary compositions and interdisciplinary collaborations with dance, musical theatre and video.

In the 2008-09 season, the Quartet performs coast-to-coast with recitals at Merkin Concert Hall in NYC and the Orange County Performing Arts Center in California, as well as at venues in Michigan, North Carolina, Virginia and upstate New York. Recent highlights include NYC appearances at Weill Recital Hall at Carnegie Hall, on the Oath Concert for Darfur at the Angel Orensanz Foundation and at the Downtown NYC River to River Festival.

*Tuesday, October 27, 2009 at 7:30 p.m.*

Adults - \$25

Seniors (55 & older)

and Children (12 & younger) - \$20



*Escher Trio*  
*Jan. 19, 2010*



*The D'Amore Duo*  
*Sept. 10, 2009*

### Escher Trio Amsterdam

The Escher Trio Amsterdam has already claimed a prominent place on national and international stages. What sets this trio apart is their talent to immediately create strong ties with its audience. During their first year of existence, the Escher Trio Amsterdam was awarded the European Music Prize which was followed by the Theodor Rogler prize, the prestigious International ARD Competition in Munich, Germany, and the A. Bosboom prize for artistic qualities.

The trio toured through the United States, Germany, the Czech Republic, Norway and South America, receiving international critical acclaim such as from the Washington Post as well as presenters—"These outstanding young musicians from The Netherlands have succeeded in creating a trio in which the ideal balance between ensemble and their individual personalities is always optimally maintained. I recommend them without reservation."—Nathan A. Randall, Artistic Director, Princeton University Concerts, who has invited them for the third time to his illustrious series.

*Tuesday, January 19, 2010 at 7:30 p.m.*

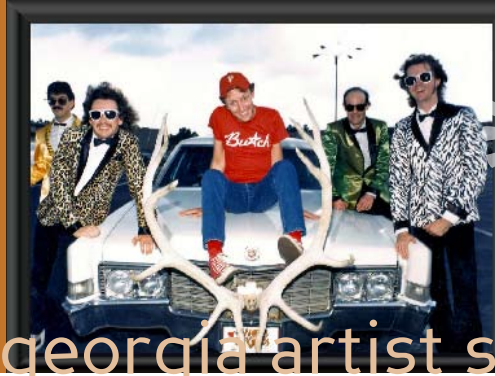
Adults - \$25  
Seniors (55 & older)  
and Children (12 & younger) - \$20

### The Michael O'Neal Chamber Singers

With a repertoire spanning centuries and styles, The Michael O'Neal Chamber Singers has emerged as one of the Southeast's finest vocal ensembles with its choral variety and polished presentation. Performing sacred and secular selections, the 27-member group appears on concert series and for corporate, civic and special private events.

*Thursday, February 11, 2010 at 7:30 p.m.*

Adults - \$25  
Seniors (55 & older)  
and Children (12 & younger) - \$20



## georgia artist series

### Hotlanta Dixieland Jazz Band

Hotlanta sets your feet firmly on Bourbon Street in Old New Orleans. You'll experience every bit of the joy, energy, and humor of that early American jazz called dixieland. Songs from Fats Waller, Hoagy Carmichael, Louie Armstrong, Jelly Roll Morton, plus many old favorites like Sweet Georgia Brown, Royal Garden Blues, South, Hard Hearted Hannah, and When The Saints Go Marching In are all part of Hotlanta's musical treat. The group has performed extensively in the South with appearances at "The Famous Door" on Bourbon Street in New Orleans' French Quarter, The Brevard College Jazz Festival in North Carolina, and the Piccolo Spoleto Festival in Charleston, to name a few. Beyond the South, Hotlanta's music has been enjoyed around the globe at clubs and jazz festivals in Spain, Germany, Japan, France, Belgium, Finland, Denmark, Poland, Belarus, Saudi Arabia and Singapore.

*Friday, August 28, 2009 at 7:30 p.m.*

Adults - \$20

Seniors (55 & older)

and Children (12 & younger) - \$16

### Un-Reconstructed Band

Un-Reconstructed is a four-piece War for Southern Independence string band which also performs Irish and Scottish folk music. Un-Reconstructed appears throughout the southern and eastern United States performing for a variety of events. The musical group has appeared as far north as Gettysburg, and as far South as Biloxi and at many small towns and far off places in between.

*Sunday, September 13, 2009 at 3 p.m.*

Adults - \$20

Seniors (55 & older)

and Children (12 & younger) - \$16

### Karen Parks, Soprano

Soprano Karen Parks has graced the London Broadway stage, making her debut as Cindy Lou (Micaela) in the West End production of "Carmen Jones", Oscar Hammerstein's reworking of Bizet's opera "Carmen". Her performance in that production resulted in the nomination for an Olivier Award. Soon thereafter she sang the world premiere of Heikki Sarmanto's "Perfect Harmony", which was televised and aired internationally. Her notable recordings include "Song of America" on Thirty Tigers, "Carmen Jones" on EMI, "Perfect Harmony" on Time Warner, "Opera Ebony Sings Spirituals" on Ebony Classics Records, "Symphony of Spirituals" on Naxos Records, "Handel's Messiah, I Hear Music In The Air", and four solo recordings "Nobody Knows: Songs of Harry T. Burleigh", "Journeys of the Heart, Nocturne and Spiritually Yours, A Private Collection".

*Thursday, October 22, 2009 at 7:30 p.m.*

Adults - \$25

Seniors (55 & older)

and Children (12 & younger) - \$20

### Golden Bells of Atlanta

Golden Bells consists of 12 ringers and several substitutes, some of whom are past members. They come from all parts of Atlanta and bring more than 200 years of combined ringing experience to the tables. Most of them also ring in or direct handbell choirs in their own local churches. The original charter members were invited to join by audition in 1995. Since then, other auditions have been held. This delightful group will present a concert of special Christmas music.

*Friday, December 11, 2009 at 7:30 p.m.*

Adults - \$20

Seniors (55 & older)

and Children (12 & younger) - \$16



## “The Great American Rock & Roll Revival”

**Butch and the Buckheads** – Twenty years of Ol’ Time Rock & Roll have paid off for this fun-filled Atlanta-based group. They are internationally known from the U.S. to Japan, from London to Frankfurt, and even Saudi Arabia and have appeared with the greats like The Commodores, The Impressions, Frankie Avalon and many more!

**Damon Hendrix** - The group’s young and vibrant Elvis impersonator, Damon Hendrix, performs more than 100 sold out shows per year all across the southeastern U.S. At the age of 5, he began to develop and master his craft. He looks, sounds and moves like “The King!”

**The Sock Hops** – This 5-piece vocal group has entertained audiences for 13 years, appearing with the likes of The Swinging Medallions, Peter Noon, 3-Dog Night and The Temptations. Covering the 50s, 60s, 70s, from “Do Wop” to “Classic Rock & Roll,” their great harmonies really deliver standing ovations.

Celebrate 25 years of performing your favorite 50s, 60s, 70s, 80s & 90s Rock & Roll Music with all three acts performing each evening listed below!

*Saturday, January 30, 2010 at 7:30 p.m.*

*Sunday, January 31, 2010 at 3 p.m.*

*Saturday, February 6, 2010 at 7:30 p.m.*

*Sunday, February 7, 2010 at 3 p.m.*

Adults - \$25

Seniors (55 & older)

and Children (12 & younger) - \$20

## Redeemer Piano Ensemble

The Redeemer Piano Ensemble began as a performing group drawn from a course first offered in 1966 by DeKalb College (now Georgia Perimeter College). This unique group of performers plays to enthusiastic audiences and is in demand by colleges, churches and civic groups. Their concerts include all types of music from classical to popular. Each year the group presents the anchor concert of the Redeemer Lutheran Church Concert Series in downtown Atlanta. Members of this unique ensemble, under the direction of Mary Brown Hinely, are Kay Brown, Andrea Emmel, Ellen Beibish, Kristi Helfin, Rachel Medley, Frances Thraikill, Peggy Tompkins and Charlene Walker.

*Saturday, March 13, 2010 at 7:30 p.m.*

Adults - \$20

Seniors (55 & older)

and Children (12 & younger) - \$16

## Big Chicken Barbershop Chorus

The Chorus adopted its name after the well-known 80-foot “Big Chicken” landmark in Marietta, Ga., and has gained recognition from all corners of the Barbershop Harmony Society and throughout the U.S. and Canada from appreciative audiences at such venues as the Fabulous Fox Theatre, Atlanta Civic Center, Symphony Hall, and the Georgia Dome. The Chorus has also performed in England for the British Association’s national convention in 1998. The Big Chicken Barbershop Chorus continues to entertain audiences with their unique blend of harmony and enthusiastic program elements – a show for the entire family.

*Saturday, May 8, 2010 at 7:30 p.m.*

Adults - \$20

Seniors (55 & older)

and Children (12 & under) - \$16



# Eulene Holmes Murray

## Department of Music

**R**einhardt College's Music Department is named for Eulene Holmes Murray, who was born in Cherokee County in 1906. She was the first of two daughters born to the Rev. Jasper and Isabelle Allison Holmes. Her father was a Methodist minister who pastored the Waleska Methodist church on the Reinhardt campus. After her father died, Eulene remained and attended Reinhardt as a teenager.

After finishing Reinhardt, she became an entertainer and, in 1940, married Stuart Murray, owner of the Atlanta Beverage Company. After his death in 1983, she managed the business until her death at age 94 in 2000.

Eulene Murray believed in Reinhardt College's mission – to educate the whole person in an environment of Christian care and challenge. Her devotion to music is exemplified through the generous contribution she made to support the music program at Reinhardt.

---

### The College Concert Choir

The Concert Choir, under the direction of Dr. Dennis McIntire, includes more than 60 voices. Their repertoire ranges from the Renaissance to the best of today's contemporary anthem literature. For more than 30 years, the Concert Choir has been a popular ambassador for the College

*Thursday, November 5, 2009 at 7:30 p.m.*  
*Sunday, April 18, 2010 at 3 p.m.*  
*Reserved Seating - \$2*

### The College Jazz Ensemble

The Reinhardt College Jazz Ensemble under the direction of Dr. Mitchel Henson has quickly built a reputation as an exciting and entertaining ensemble. The group utilizes the traditional instrumentation of the classic big bands consisting of 5 saxophones, 4 trumpets, 4 trombones, piano, guitar, bass, drums, and vocalist; but uniquely includes flutes. Their concerts are always entertaining as they present the best of the jazz classics from the 30s to the present.

*Tuesday, November 10, 2009 at 7:30 p.m.*  
*Thursday, April 22, 2010 at 7:30 p.m.*  
*Reserved Seating - \$2*

### Christmas Concert

This annual concert never fails to draw a full house every night it is presented. This festive concert includes performances by the Concert Choir, the College Wind Ensemble, the College Orchestra, the College Jazz Ensemble, smaller ensembles and soloists. You will want to order your tickets early for this popular annual tradition.

*Thursday, Friday & Saturday,*  
*December 3, 4 & 5, 2009 at 7:30 p.m.*  
*Reserved Seating - \$5*

### The College Wind Ensemble

The Wind Ensemble, under the direction of Dr. David Gregory, is composed of Reinhardt College students and community members who audition to play with the ensemble. With approximately 60 members, their sound is impressive and inspiring.

*Thursday, November 19, 2009 at 7:30 p.m.*  
*Thursday, April 15, 2010 at 7:30 p.m.*  
*Reserved Seating - \$2*

### The College Symphony Orchestra

The College Symphony Orchestra, under the direction of Dr. David Gregory, is composed of Reinhardt College students and members of the community who audition to play with the orchestra. The orchestra presents a fall and a spring concert.

*Monday, November 23, 2009 at 7:30 p.m.*  
*Monday, April 19, 2010 at 7:30 p.m.*  
*Reserved Seating - \$2*



*Christmas Concert  
Dec. 3, 4, & 5, 2009*

**The Lucktenberg  
Chamber Ensemble  
"A Celebration of Haydn"**

Artist-in-Residence, Dr. George Lucktenberg will be joined by Nan Maddox on cello, Lisa Morrison on violin and Lisa Mahoney on flute to present a program of selections by Joseph Haydn.

*Sunday, November 15, 2009 at 3 p.m.*

*Free (No tickets required)*

**Artist-in-Residence  
George Lucktenberg  
Solo Recital**

Dr. George Lucktenberg will perform and make commentary on works for harpsichord, including works by J.S. Bach (in celebration of his birthday) and others who composed for the instrument.

*Sunday, March 21, 2010 at 3 p.m.*

Adults - \$15

Seniors (55 & older)

and Children (12 & under) - \$12

## Entertainment Series

	Date	Time	Adult/Sr.*& Child**
Kevin Locke Native Dance Ensemble	Sept. 24, '09	7:30 p.m.	\$30/\$24
Kevin Locke Native Dance Ensemble	Sept. 25, '09	7:30 p.m.	\$30/\$24
Branson on the Road	Oct. 6, '09	7:30 p.m.	\$30/\$24
Branson on the Road	Oct. 7, '09	3:00 p.m.	\$30/\$24
Lady Bird, Pat & Betty – Tea for Three	Nov. 13, '09	7:30 p.m.	\$30/\$24
The Shoemaker and the Christmas Elves	Dec. 8, '09	7:00 p.m.	\$25/\$20
Conversations With Robert Osborne	Jan. 10, '10	3:00 p.m.	\$30/\$24
Duelling Divas™– Opera with a Twist	Feb. 25, '10	7:30 p.m.	\$30/\$24
Duelling Divas™– Opera with a Twist	Feb. 26, '10	7:30 p.m.	\$30/\$24
Celtic Crossroads	Mar. 9, '10	7:30 p.m.	\$30/\$24
Celtic Crossroads	Mar. 10, '10	7:30 p.m.	\$30/\$24

## Concert Artist Series

	Date	Time	Adult/Sr.*& Child**
D'Amore Duo	Sept. 10, '09	7:30 p.m.	\$25/\$20
Bella Sorella	Oct. 1, '09	7:30 p.m.	\$30/\$24
Amstel Quartet	Oct. 27, '09	7:30 p.m.	\$25/\$20
Escher Trio	Jan. 19, '10	7:30 p.m.	\$25/\$20
Michael O'Neal Chamber Singers	Feb. 11, '10	7:30 p.m.	\$25/\$20
Kellylee Evans	Feb. 18, '10	7:30 p.m.	\$25/\$20

## Georgia Artists Series

	Date	Time	Adult/Sr.*& Child**
Hotlanta Dixieland Jazz Band	Aug. 28, '09	7:30 p.m.	\$20/\$16
Un-Reconstructed Band	Sept. 13, '09	3:00 p.m.	\$20/\$16
Karen Parks	Oct. 22, '09	7:30 p.m.	\$20/\$16
Golden Bells of Atlanta	Dec. 11, '09	7:30 p.m.	\$20/\$16
Great American Rock & Roll Revival	Jan. 30, '10	7:30 p.m.	\$25/\$20
Great American Rock & Roll Revival	Jan. 31, '10	3:00 p.m.	\$25/\$20
Great American Rock & Roll Revival	Feb. 6, '10	7:30 p.m.	\$25/\$20
Great American Rock & Roll Revival	Feb. 7, '10	3:00 p.m.	\$25/\$20
Redeemer Piano Ensemble	Mar 13, '10	7:30 p.m.	\$20/\$16
Big Chicken Barbershop Chorus	May 8, '10	7:30 p.m.	\$20/\$16

## Student Ensembles

	Date	Time	All
Concert Choir Fall Concert	Nov. 5, '09	7:30 p.m.	\$2
Jazz Ensemble Fall Concert	Nov. 10, '09	7:30 p.m.	\$2
Wind Ensemble Fall concert	Nov. 19, '09	7:30 p.m.	\$2
Orchestra Fall Concert	Nov. 23, '09	7:30 p.m.	\$2
Christmas Concert	Dec. 3, '09	7:30 p.m.	\$5
Christmas Concert	Dec. 4, '09	7:30 p.m.	\$5
Christmas Concert	Dec. 5, '09	7:30 p.m.	\$5
Wind Ensemble Spring Concert	Apr. 15, '10	7:30 p.m.	\$2
Concert Choir Spring Concert	Apr. 18, '10	3:00 p.m.	\$2
Orchestra Spring Concert	Apr. 19, '10	7:30 p.m.	\$2
Jazz Ensemble Spring Concert	Apr. 22, '10	7:30 p.m.	\$2

## Faculty Recitals

	Date	Time	Adult/Sr.*& Child**
Lucktenberg Chamber Ensemble "A Celebration of Haydn"	Nov. 15, '09	3:00 p.m.	\$15/\$12
George Lucktenberg Solo Recital	Mar. 21, '10	3:00 p.m.	Free

## Season Tickets

<b>Entertainment Series</b>	<b>Adult*/Sr.&amp; Child**</b>
<b>Concert Artists Series</b>	<b>\$185/\$145</b>
<b>Georgia Artists Series</b>	<b>\$140/\$110</b>
<b>Full Season (does not include Music Department events)</b>	<b>\$130/\$105</b>
	<b>\$440/\$345</b>

A service charge is added to each ticket purchased on the Internet.

\* (55 and older) \*\* (12 & younger)

# Ticket Order Form

# of Tickets	Individual Programs	Price
<input type="text"/>	<input type="text"/>	@ \$ = <input type="text"/>
<input type="text"/>	<input type="text"/>	@ \$ = <input type="text"/>
<input type="text"/>	<input type="text"/>	@ \$ = <input type="text"/>
<input type="text"/>	<input type="text"/>	@ \$ = <input type="text"/>
<input type="text"/>	<input type="text"/>	@ \$ = <input type="text"/>
<input type="text"/>	<input type="text"/>	@ \$ = <input type="text"/>
<input type="text"/>	<input type="text"/>	@ \$ = <input type="text"/>
<input type="text"/>	<input type="text"/>	@ \$ = <input type="text"/>
<input type="text"/>	<input type="text"/>	@ \$ = <input type="text"/>
<input type="text"/>	<input type="text"/>	@ \$ = <input type="text"/>
		<b>Total</b> <input type="text"/>

Children 12 and under and seniors 55 and older qualify for discount ticket prices.

# of Tickets	Season Ticket Options	Price
<input type="text"/>	Entertainment Series	@ \$ = \$ <input type="text"/>
<input type="text"/>	Concert Series	@ \$ = \$ <input type="text"/>
<input type="text"/>	Georgia Artist Series	@ \$ = \$ <input type="text"/>
<input type="text"/>	All Series	@ \$ = \$ <input type="text"/>
		<b>Total</b> <input type="text"/>

The Box Office will be open one hour before performances.

Name:

Address:

City:  State:  Zip:

Credit Card #:

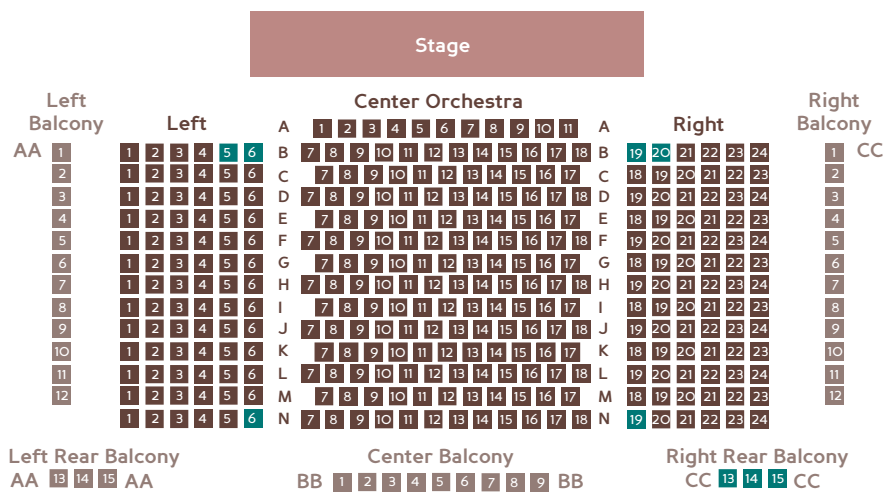
Expiration Date:

Signature:

- My check, payable to Reinhardt College, is included.
- Please charge my credit card (Visa, MasterCard or American Express only).

## Seating Chart and Concert Hall Layout

- Main Level Seating
- Wheel Chair Space
- Balcony Seating
- Stage





*The Way College Should Be*

Floyd A. and Fay W. Falany  
Performing Arts Center

7300 Reinhardt College Circle

Waleska, GA 30183-2981

General Phone: (770) 720-5558

Fax: (770) 720-9164

Box Office Phone: (770) 720-9167

E-mail: [fpac@reinhardt.edu](mailto:fpac@reinhardt.edu)

