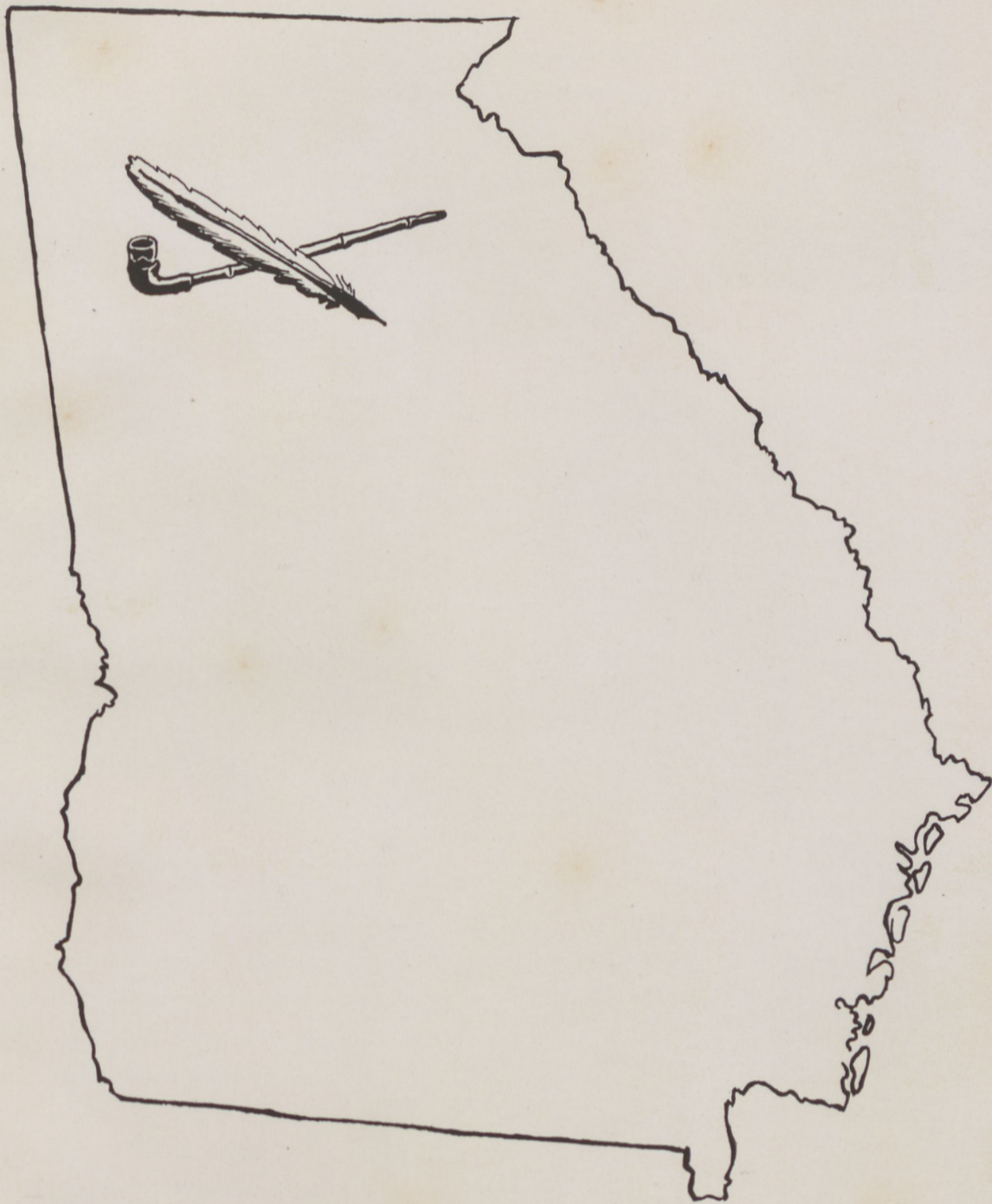


The cover features a detailed embossed landscape. A tall, slender evergreen tree stands prominently in the foreground on the left. Behind it, a range of rugged mountains is visible, with a body of water in the middle ground. Several smaller evergreen trees are scattered across the landscape. The entire scene is rendered in a dark, textured material with raised, golden-brown highlights.

1948

Cherokee Phoenix

This Is a History of Reinhardt



In the western part of Cherokee County, seven miles from Canton, just forty-seven miles from Atlanta, the college community enjoys calm and serenity, yet is easily accessible.

A HISTORY OF THE PAST



In 1883, following an appeal by Captain A. M. Reinhardt to the North Georgia Conference of the Methodist Church . . .

Reinhardt College opened its doors of opportunity to youth in an abandoned cabinet shop . . .



The Military Department was organized in 1892 and was compulsory for all male students entering the college. The department was extremely successful under the management of Major John W. West, A. T. Hind, and other commandants until it was discontinued in 1924.

AND IN 1948



Administration
Building



Dobbs
Building

Gymnasium



The property of Reinhardt College, at present, includes six buildings, a forty-acre campus, one hundred and fifty acres of farmland, and three hundred acres of forest.

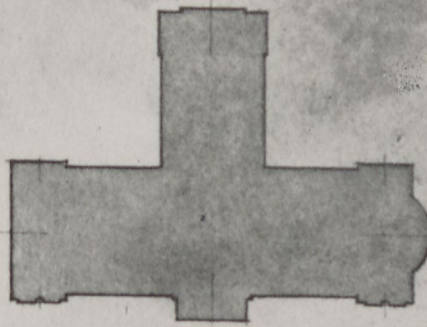
A HOPE FOR



ADMINISTRATION & AUDITORIUM BUILDING PROPOSED FOR

The proposed administration and auditorium building is to be constructed rooms, three music rooms, a large library, and an auditorium. On the

THE FUTURE



PLAN



WM. J. J. CHASE - ARCHITECT -
140 PEACHTREE ATLANTA, GA

WILHARDT COLLEGE, WALEJKA, CHEROKEE COUNTY, GEORGIA

of fireproof materials. It will contain three administrative offices, ten class-
ground floor will be rooms for a laundry, storage and student supplies.

As Seen In Your—

Christian education is the hope of the world
today . . .



President's Home

Boys'
Dormitory



Girls'
Dormitory

Today we realize more than ever that
character is more important than bigness . . .

1948 CHEROKEE PHOENIX

presented

by the

STUDENT BODY



Post Office



Classroom



Class Over



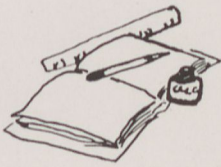
The Grill

And Is Divided Into These Sections



*as was the original Cherokee Phoenix created by
the hand and brain of an unlettered Cherokee
chieftain, Sequoia, inventor of the 85 pho-
netic symbols which brought the light
of literacy to his own proud race
—the great Cherokee Nation.*

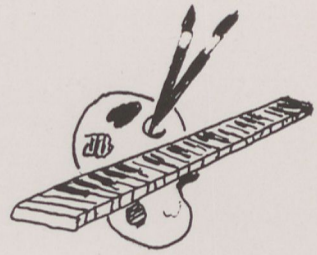
Features
Sports
Activities
The People



EDUCATION



RELIGION



ARTS

And Is Dedicated To



the many loyal friends of Reinhardt
whose enduring efforts have made its
continuance and progress possible in
the past years and upon whom the
progress of the future depends.



ADMINISTRATION



President

MR. J. R. BURGESS, JR.



Dean

MR. E. E. TEBEAU



Secretary

MRS. MARY LOU LITTLE

FACULTY



MISS DECORA ADAMS
English, French



MRS. STELLA ALVERSON
Commercial Department



REV. PLEMAN FOLDS
*Director of
Religious Education,
Biology*



MRS. TINIE MCDANIEL
Matron



MISS ALICE KELLY
English



MR. JOE MAHAN
*Public Relations,
Journalism*



MISS DOROTHY RAY
*Mathematics
Annual Adviser*



MRS. JEAN SAWYER
Music Department



MRS. J. R. STRONG
Director of Kitchen



MR. B. H. STUBBS
History



MISS DOROTHY TANNER
Home Economics



MISS CHRISTENA TIMMONS
*Librarian,
Education Department,
Annual Adviser*

The People



Leisure Time



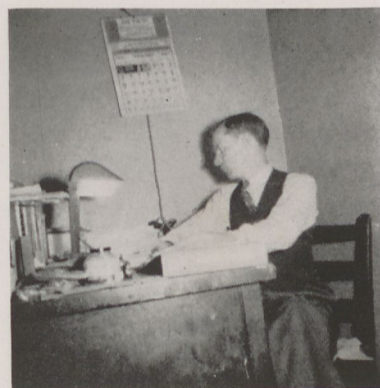
Pine Log



Going Places



Happiness Reigns



"The Den"



Time for Worship

SENIOR OFFICERS



ELREE BRIDGES	<i>President</i>	SYLVIA SHURLING	<i>Secretary</i>
CHARLES LITTLE	<i>Vice-President</i>	JAMES GRIFFIN	<i>Treasurer</i>

SENIORS

RANDALL ADAMS
Hartwell, Ga.

Ministerial Conference,
Seminole, Haygood
Society.



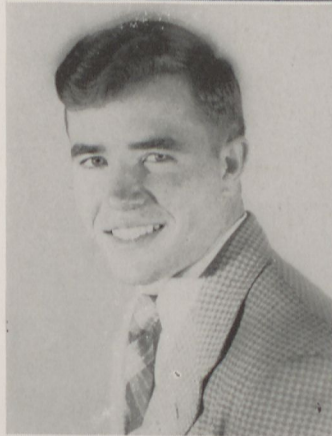
RANDALL BAGWELL
Canton, Ga.

*"Climb though the
Rock be rugged"*
Pierce Society.

KEYES BOWMAN
Tallulah Falls, Ga.

*"Happy have we met,
happy have we been,
happy may we part,
and happy meet
again."*

Haygood (Chaplain),
Ministerial Conference
(Bishop, last quarter of
'46), Glee Club,
Seminole.



ELREE BRIDGES
Point Peter, Ga.

*"Never put off until to-
morrow what you can
do the day after."*

President of Seniors,
President of Honor
Club,
Assistant Editor
Hiltonian,
On Annual Staff,
Phi Alpha,
Ministerial Conference,
Art Club.

PHILIP BYRD
Fairmount, Ga.

Haygood Society,
Vice-President
Seminole.



MARIE CAGLE
Jasper, Ga.

*"A quitter never wins
and a winner never
quits."*

Phi Alpha,
Honor Club, F. T. A.,
Tallulah.

JAMES CLINE
Waleska, Ga.



SAM CLONTS
Powder Springs, Ga.

*"Get what you can out
of life."*

Annual Staff,
Haygood Society.

SENIORS

EUGENIA COOPER
Dalton, Ga.

*"On being good you
gain more from life."*

Alpha, Glee Club,
Education, V.-President.



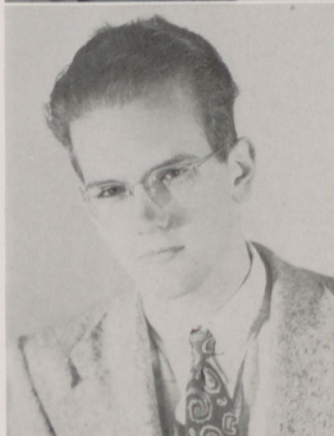
HERBERT DISHAROON
Canton, Ga.

*"Whatever is worth do-
ing at all is worth
doing well."*

Haygood Society,
Glee Club, Mohawk,
Hiltonian Staff,
Member of Quartet.

JOHN EBERHARDT
Waleska, Ga.

Pi Epsilon,
Hiltonian Staff
Editor '46,
Managing Editor '48,
Haygood.



GLENN FORRESTER
Canton, Ga.

Pierce Society.

COY FREE
Canton, Ga.

*"Be kind to dumb ani-
mals."*

Veterans' Club,
Vice-President;
Pierce Society,
Mohawk.



JAMES GRIFFIN
Hartwell, Ga.

*"Think before you act
and do the best you
can in everything."*

Ministerial Conference,
Bishop, Haygood
Society,
President of Sunday
School Class of '46,
Treasurer of Senior
Class in '47.

DICK HADAWAY
Atlanta, Ga.

*"Never give up the ship
until you take on the
last drip."*

Haygood,
Secretary, Honor Club
of '46,
Seminole, Glee Club.



VALMON HASTY

Canton, Ga.
Alpha Society.

SENIORS

JOHN HOLBROOK
Cumming, Ga.

"Eat, drink, and be merry for tomorrow you may die."

Pierce, Chaplain '46,
Chancellor '47,
Seminole.



ELAINE HOLCOMBE
Chatsworth, Ga.

"Affliction changes the color of life and I am determined to choose the color."

F. T. A., Vice-President,
Pi Epsilon, Secretary,
Alpha.



CHARLES LITTLE
Jasper, Ga.

"It can be done; do it."

Haygood, President;
Glee Club,
Ministerial Conference,
Seminole.



IMOGENE LOVELACE
Ball Ground, Ga.

"If at first you don't succeed, try, try again."

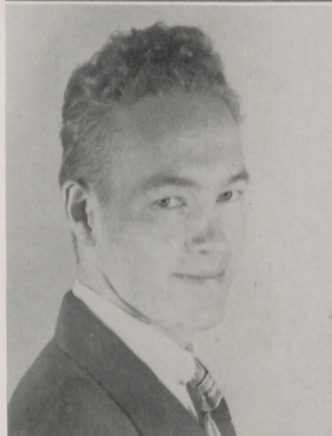
Alpha, Treasurer '46,
Secretary '47,
Choctaw, Little Chief,
F. T. A.



JAMES McDONALD
Lafayette, Ga.

"Live today and ponder not of tomorrow."

Haygood,
Veterans' Club,
Seminole.



SANFORD McDONALD
Pendergrass, Ga.

"I press forward for Christ."

Haygood,
M. Y. F., President,
Glee Club,
Vice-President '47-'48,
S. S. Class Chaplain '47,
Ministerial Conference,
Bishop '47,
Church Choir,
Seminole.



BETTY ROSE McEVER
White, Ga.

Alpha, Tallulah,
Little Chief.



ALVIN MCGARITY
Hampton, Ga.

"Be square."

Haygood, Seminole,
Commercial Club.



SENIORS

SIDNEY MOODY
Canton, Ga.

*"Speech is silver, silence
golden."*

Hiltonian Staff,
Managing Editor;
Pierce.



BILLY MOORE
Hampton, Ga.

*"Do unto others as you
would have them do
unto you."*

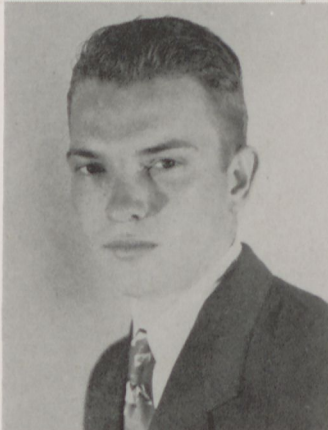
Art Club, President;
Glee Club,
Ministerial Conference,
Choir, Haygood,
Honor Club.



EDDIE NEWSOM
Eatonton, Ga.

*"Unless you lose your-
self, you cannot find
yourself."*

Haygood,
Ministerial Conference.



JOYCE OWEN
Waleska, Ga.

*"Laughter, love, and
happiness."*

Alpha, F. T. A.,
Hiltonian Staff, '46-'47,
Choctaw, Glee Club,
Honor Club.



GLENN PAYNE
Canton, Ga.

*"Eat, drink, and be
merry."*

Pierce, Honor Club,
'46-'47.



JAMES PONDER
Waleska, Ga.



CARROLL REID
Canton, Ga.

*"If you can't find a
path, make one."*

Glee Club, President;
Veterans Club,
Haygood, Mohawk.



JAMES SHURLING
Atlanta, Ga.

Haygood,
Veterans Club,
F. T. A.



SENIORS

SYLVIA SHURLING
Pine Log, Ga.

*"Love, laughter, and
liberty."*

Alpha, Choctaw,
F. T. A., President;
Senior Class Secretary.



ELIZABETH SMITH
Point Peter, Ga.

*"Do all the good today,
for you know not what
tomorrow brings."*

Alpha,
Ministerial Conference.



GERTIE LOU STROUD
Powder Springs, Ga.

Delta, Tallulah,
Ministerial Conference,
Hiltonian Staff,
Annual Staff, M. Y. F.



COLLEEN TATUM
Jasper, Ga.

*"Hold your chin up and
keep smiling."*

Delta, F. T. A.,
Choctaw.



MARY TEAGUE
Jasper, Ga.

*"Study literature if you
expect to pass."*

Delta, F. T. A.,
M. Y. F., Choctaw,
Big Chief.



BETTY TURNER
Waleska, Ga.

Alpha, Glee Club,
Tallulah.



HAROLD TURNER
Waleska, Ga.



JOE VAUGHAN
Toccoa, Ga.

*"Comes jucundus in vig
pro Vehicula est."*

Haygood, F. T. A.,
Seminole.



SENIORS

KATHRYN VEAL
Sandersville, Ga.

Delta.



J. C. WALLACE
Cumming, Ga.

Pierce, President, '47;
Seminole, Big Chief.

ALEX WEATHERBY
Canton, Ga.

Haygood,
Veterans Club,
Mohawk, Little Chief.



RUTH WHITFIELD
Jasper, Ga.

*"You can do anything
you want to do if you
want to do it bad
enough."*

Delta, Sec. and Treas.;
Hiltonian Staff,
Editor, Tallulah;
Honor Club.

JACK WHITMIRE
Canton, Ga.

*"Man is what he makes
of himself."*

Haygood, Seminole,
F. T. A., Secretary;
Male Quartet.

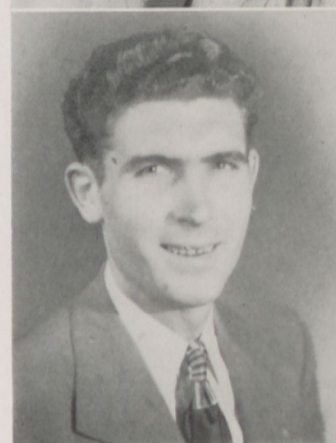


RAWLAN WHITTEMORE
Dalton, Ga.

Haygood, Sgt.-at-Arms;
Seminole, Little Chief;
F. T. A.

LEE WILLIAMS
Marietta, Ga.

Haygood,
Veterans Club.

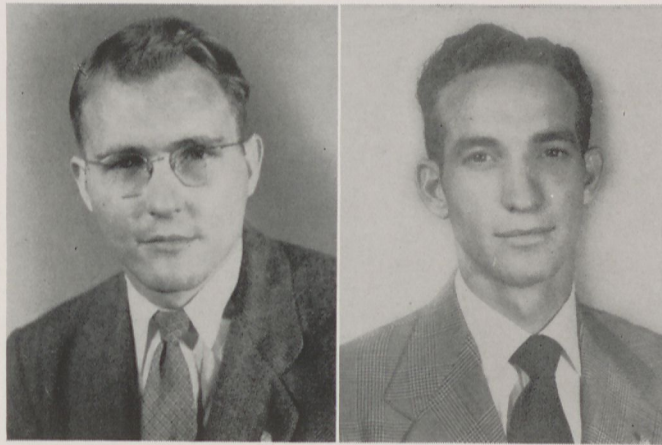


CLYDE WORLEY
Ball Ground, Ga.

Haygood,
Veterans Club.

SENIORS

JOE CLAYTON
Avondale Estates, Ga.
Photographer, Annual
Staff.



ED VAUGHAN
Canton, Ga.
Seminole,
Pierce.

** Seniors not shown:*

HOMER AMMONS

CALVIN MURPHY

HERBERT SMITH

COLLEGE JUNIORS

BOBBY AARON

OPAL ADAIR

CHRISTINE ADAMS



VERNON AYERS, *Secretary*

THOMAS BARNETTE

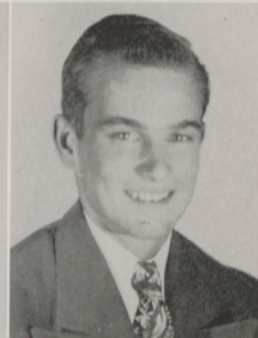
ANN BEALE



SARA BEGGS

PHILIP BRAMLETT

LOIS CAGLE



WYATT CAGLE

BETTY ANN CARPENTER,
Treasurer

ROBERT CHAFIN



R. J. CHASTAIN

MARY ALICE COFER

WEBBIE COFFEY



JUNIORS



BETTY AGNES COOPER



ANNIE DAVIS



CLIFFORD DAVIDSON



JOHNNIE EDENS



JAMES FOUNTAIN



L. M. GRIGGS



BETTY JEAN HARRIS



ARCHIE HAYGOOD



JONELL HEMPHILL



MARGARET HODGES



EDSEL INGRAM



TOOMBS KAY, JR.



LILA LEATHERWOOD



JOCELYN LEE



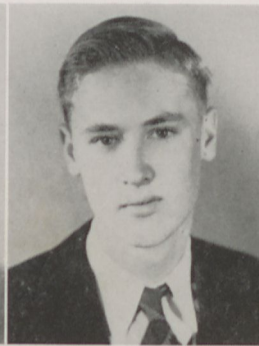
HOYT MCCURLEY

JUNIORS

ED McELHENNEY

RICHARD MOON

DOROTHY MOORE



ANN MORRIS

ALBERT OZBURN, *Vice-President*

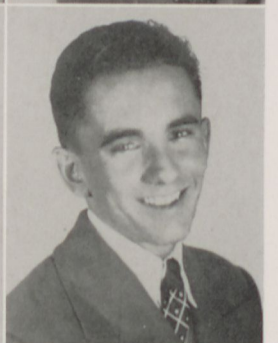
BARBARA PAUL



JEAN PITTMAN

GLORIA RIDGWAY

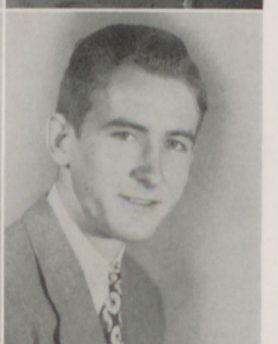
VICENTE RODRIQUEZ



JAMES SEABOLT

OLIVER SMITH

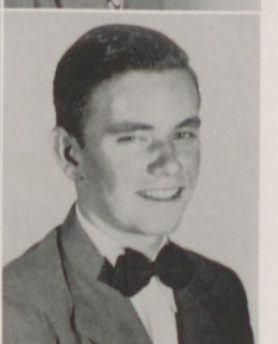
MARION THOMPSON



BILL THOMPSON

FRADIE TILLER

FELIX TURNER, *President*



JUNIORS



ROBERT TURNER

VERA TURNER

COLLENE WALDROP



GORDON WEATHERBY

KENNETH WHITTEMORE

MARY ANN WINTER



MARTHA WORLEY

SANFORD WYRICK

LEE WYNN



RUTHELLE SOSEBEE

** Juniors not shown:*

BILL ALTON
HAROLD BRASWELL
JUANITA BURRELL
DOUGLAS COMSTOCK
HERMAN DISHAROON
HUGH DOSS

LARRY NEW
ALLEN PINYAN
W. A. PRESSLEY
DONALD SAMS
N. S. TIMMONS
GARNETT WILDER

HIGH SCHOOL SENIOR OFFICERS



MARY VIRGINIA WHITAKER	<i>President</i>	HELEN LUNKENHEIMER	<i>Secretary</i>
EDWIN DICKSON	<i>Vice-President</i>	SARA VINING	<i>Treasurer</i>

High School Seniors

CHRISTINE CAGLE
Canton, Ga.

"If at once you don't succeed, try and try again,"
Tallulah.



BILL CLINE
Waleska, Ga.

"I came, I saw and I am going."

Seminole.



EDWIN DICKSON
Bolton, Ga.

Glee Club, Beta Club, Haygood Society and Seminole.



HELEN LUNKENHEIMER
Atlanta, Ga.

"It is better to have loved and lost than never to have loved at all."

Delta, Beta Club,
Glee Club, Art Club,
M. Y. F. and
Hiltonian Staff.



BARON POPE
Atlanta, Ga.

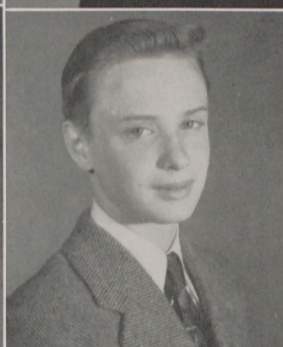
"A clean, honest life is to be respected of all men."

Haygood, Seminole.



JOHNNY O'TOOLE
Atlanta, Ga.

Seminole, Haygood.



EDNA VEATCH
Lafayette, Ga.

"Laugh and the world laughs with you."

Delta, President '47;
Glee Club, Choctaw.



SARA VINING
Atlanta, Ga.

"My joy is as deep as the ocean, and my troubles as light as its foam."

Alpha,
President of Beta Club,
M. Y. F., Choir,
Glee Club and
Treasurer, Senior Class.



MARY WELDEN
Senoia, Ga.

"I want what I want when I want it, and I know what I want right well."

Alpha, Choir, Beta Club,
Ministerial Conference,
M. Y. F. and Choctaw.



VIRGINIA WHITAKER
Columbia, S. C.

"Take Life as you find it, but don't leave it so."

Alpha Society,
Treasurer; Beta Club,
Vice-President; Choir,
Glee Club,
Ministerial Conference,
M. Y. F. and Choctaw,
President of Senior Class.



* Not shown:

HENRY GOINES
Atlanta, Ga.



FRESHMEN

Grace Cochran, Yeteva Bennett (President), Gerene Parris, Mary King, Elise McEntyre, Beulah Grace Cline (Secretary), Eva Mae Holder, Lillian Wright, Mary Lou McCoy, Doris Disharoon, Ella Mae Holder, Elizabeth Darby, Franklin Parris, Jack Cline, Marvin Ponder, Franklin Pharr, Fred Parker, Frank McDaris.

Not shown:

Virlyn Blalock, June Cline (Treasurer), Jewel McDaris, Laura Russell (Vice-President), Ibis Saenz.

SOPHOMORES

Sara Timmons (Secretary), Willard Cagle (Treasurer), Jacqueline Fronebarger, Ida Mae Lowery, David Cline (Vice-President), Buddy Whitaker (President), Hobart King, Donald Pharr.

JUNIORS

Virginia Lee, Joyce Loyd, Annette Gilman, Imogene Whitaker, Mary Fronebarger, Frances Jones, Bobby Cline, Jack Cochran, Winston Ponder, Eugene Cline, James White, Louis Johnson.

Not shown:

Grady Cline, Alton Johnson.

Activities



Dr. Samuel C. Dobbs was given honorary membership in both the Haygood and Pierce Literary Societies at an unprecedented joint meeting of the two rival organizations. The award was made in recognition of Dr. Dobbs' generous support of Christian education and his great love for Reinhardt College. He is shown above with J. C. Wallace, left, president of the Pierce Society, and Charles Little, the Haygood president.



Initiation Day



F. T. A. Party



Girls' Initiation

The Ministerial Conference



Bishop JAMES GRIFFIN
District Superintendent RANDALL ADAMS
Secretary ELIZABETH SMITH
Treasurer KEYES BOWMAN
Director of Religious Education . . . REV. PLEMAN FOLDS



First row: Sanford McDonald, Buddy Whitaker, Alton Johnson, James H. Griffin, Mary Welden, Virginia Whitaker, Jean Pittman . . . *Second row:* Charles Little, Jocelyn Lee, Kathryn Veal, Garnett Wilder, Martha Worley, Archie Haygood . . . *Third row:* Barbara Paul, Margaret Hodges, Elree Bridges, Keyes Bowman, Jonellont Hemphill, Rev. Pleman Folds (director of Religious Education) . . . *Fourth row:* Billy Moore, Eddie Newsom, Gertrude Stroud, Thomas Barnette, Toombs Kay, Felix Turner . . . Sara Beggs, Randall Adams (not shown).

GLEE CLUB

CARROLL REID *President*
 SANFORD McDONALD . . *Vice-President*



BETTY ANN CARPENTER . . . *Secretary*
 MRS. JEAN SAWYER . . *Director of Music*



Jocelyn Lee, Accompanist . . . *First row:* Yeteva Bennett, Betty Ann Carpenter, Virginia Lee, Sara Timmons, Virginia Whitaker, Imogene Whitaker, Joyce Owen, Edna Veatch, Betty Turner . . . *Second row:* Annette Gilman, Sara Vining, Martha Worley, Grace Cochran, Helen Lunkenheimer, Ann Beale, June Cline, Eugenia Cooper . . . *Third row:* Keyes Bowman, Vicente Rodriquez, Kenneth Cox, Edwin Dickson, Garnett Wilder, Sanford McDonald, Archie Haygood, Dick Hadaway, John Holbrook, Charles Little . . . *Fourth row:* Marion Thompson, Billy Moore, Ed McElheney, Carroll Reid, Webbie Coffey, Toombs Kay, Herbert Disharoon, Hubert Disharoon, Bill Thompson . . . Sara Beggs (not shown).

METHODIST YOUTH FELLOWSHIP



SANFORD McDONALD *President*

BETTY ROSE McEVER *Vice-President*

JONELL HEMPHILL *Secretary*

MISS DECORA ADAMS *Adviser*

The local M. Y. F. is composed of the Christian youth of Waleska and Reinhardt College. Some of the activities of this organization are deputations, student conferences, sub-district, mission projects, retreats, dormitory prayer groups, and many others relative to student life.

CHURCH CHOIR



First row: Annette Gilman, Martha Worley, Sara Vining, Imogene Whitaker, Virginia Whitaker, Helen Lunkenheimer . . .
Second row: Mrs. Jean Sawyer (Dir.), Virginia Lee, Mary Welden, Jocelyn Lee . . . *Third row:* Thomas Barnette, Keyes Bowman, Sanford McDonald, Vicente Rodriquez, Archie Haygood . . . *Fourth row:* Toombs Kay, Eddie Newsom, Mr. J. R. Burgess, Webbie Coffey, Billy Moore. Not shown: Sara Beggs.

HONOR CLUB



Elaine Holcomb, Sanford McDonald, Marie Cagle, John Eberhardt, Elree Bridges, Billy Moore, Joyce Owen. * Not shown, Ruth Whitfield.

OFFICERS

ELREE BRIDGES	<i>President</i>	JOHN EBERHARDT	<i>Treasurer</i>
BILLY MOORE	<i>Vice-President</i>	ELAINE HOLCOMB	<i>Secretary</i>

BETA CLUB



First row: Sara Vining, Virginia Whitaker, Buddy Whitaker, Sara Timmons, Imogene Whitaker . . . Second row: Edwin Dickson, Eugene Cline, Mary Welden, Helen Lunkenheimer.

SARA VINING	<i>President</i>	BUDDY WHITAKER	<i>Chaplain</i>
VIRGINIA WHITAKER	<i>Vice-President</i>	IMOGENE WHITAKER	<i>Secretary</i>
HELEN LUNKENHEIMER			<i>Treasurer</i>

Pierce Society



Members

VERNON AYERS
 RANDALL BAGWELL
 THOMAS BARNETT
 PHILIP BRAMLETT
 JOSEPH CLAYTON
 BOBBY CLINE
 JACK CLINE
 CLIFFORD DAVIDSON
 GLENN FORRESTER
 COY FREE
 L. M. GRIGGS
 JOHN HOLBROOK
 TOOMBS KAY
 EDWARD McELHENEY
 SIDNEY MOODY
 FRANKLIN PARRIS
 VICENTE RODRIGUEZ
 OLIVER SMITH
 N. S. TIMMONS
 MARION THOMPSON
 FELIX TURNER
 J. C. WALLACE
 BUDDY WHITAKER
 JAMES WHITE
 GARNETT WILDER
 LEE WYNN

OFFICERS

TOOMBS KAY	Chaplain
BUDDY WHITAKER	Secretary
VERNON AYERS	Treasurer
MR. JOE MAHAN	Sponsor
N. S. TIMMONS	Vice-President
JOHN HOLBROOK	Chancellor
J. C. WALLACE	President

Haygood Society

Members

BOBBY AARON	SANFORD McDONALD
RANDALL ADAMS	ALVIN MCGARITY
BILL ALTON	RICHARD MOON
KEYES BOWMAN	BILLY MOORE
PHILIP BYRD	CALVIN MURPHY
BOBBY CHAFIN	LARRY NEW
DAVID CLINE	EDDIE NEWSOM
SAM CLONTS	JOHNNY O'TOOLE
WEBBIE COFFEY	ALBERT OZBURN, JR.
KENNETH COX	BARON POPE
EDWIN DICKSON	CARROLL REID
HERMAN DISHAROON	DONALD SAMS
HUBERT DISHAROON	JAMES SEABOLT
HUGH LEE DOSS	JAMES SHURLING
JOHN EBERHARDT	HERBERT SMITH
JAMES FOUNTAIN	BILL THOMPSON
HENRY GOINES	ROBERT TURNER
JAMES GRIFFIN	JOE VAUGHN
DICK HADAWAY	ALEX WEATHERBY
ARCHIE HAYGOOD	GORDON WEATHERBY
EDSEL INGRAM	JACK WHITMIRE
ALTON JOHNSON	KENNETH WHITTEMORE
LOUIE JOHNSON	RAWLAN WHITTEMORE
CHARLES LITTLE	LEE ROY WILLIAMS
HOYT MCCURLEY	CLYDE WORLEY
JAMES McDONALD	SANFORD WYRICK



OFFICERS

KEYES BOWMAN	Chaplain
DICK HADAWAY	Secretary
RAWLAN WHITTEMORE	Sergeant-at-Arms
CHARLES LITTLE	President
RANDALL ADAMS	Critic
EDWIN DICKSON	Vice-President
HENRY GOINES	Treasurer
REV. PLEMAN FOLDS	Sponsor

Alpha Society

MEMBERS

CHRISTINE ADAMS
SARA BEGGS
YETEVIA BENNETT
MARIE CAGLE
BETTY ANN CARPENTER
JUNE CLINE
MARY ALICE COFER
BETTY COOPER
ELREE BRIDGES
ANNETTE GILMAN
VALMON HASTY
MARGARET HODGES
JONELL HEMPHILL
ELAINE HOLCOMB
FRANCES JONES
JOCELYN LEE
VIRGINIA LEE
IMOGENE LOVELACE
DOROTHY MOORE
BETTY RO'E McEVER
JOYCE OWEN
BARBARA PAUL
GLORIA RIDGWAY
IBIS SAENZ
SYLVIA SHURLING
ELIZABETH SMITH
FRADIE TILLER
BETTY TURNER
SARA VINING
IMOGENE WHITAKER
VIRGINIA WHITAKER
MARY WELDEN
MARTHA WORLEY



OFFICERS

DOROTHY MOORE	<i>President</i>
SARA VINING	<i>Chaplain</i>
BETTY ANN CARPENTER	<i>Vice-President</i>
IMOGENE LOVELACE	<i>Secretary</i>
JOCELYN LEE	<i>Social Chairman</i>
MARIE CAGLE	<i>Program Chairman</i>
MISS ALICE KELLY	<i>Sponsor</i>
VIRGINIA WHITAKER	<i>Treasurer</i>



Delta Society

MEMBERS

OPAL ADAIR
ANN BEALE
LOIS CAGLE
ANN DAVIS
JOHNNIE EDENS
BETTY JEAN HARRIS
LILA LEATHERWOOD
JOYCE LOYD
HELEN LUNKENHEIMER
ANNE MORRIS
JEAN PITTMAN
LAURA RUSSELL
GERTIE STROUD
COLLEEN TATUM
MARY TEAGUE
SARA TIMMONS
VERA TURNER
EDNA VEATCH
KATHRYN VEAL
COLLEEN WALDROP
RUTH WHITFIELD
MARY ANN WINTER

OFFICERS

MARY TEAGUE	<i>Program Chairman</i>
EDNA VEATCH	<i>President</i>
SARA TIMMONS	<i>Reporter</i>
COLLEEN TATUM	<i>Vice-President</i>
GERTIE STROUD	<i>Chaplain</i>

Cherokee Phoenix Staff



SANFORD McDONALD	<i>Editor-in-Chief</i>
ELREE BRIDGES	<i>Associate Editor</i>
ELAINE HOLCOMB	<i>Business Manager</i>
MISS DOT RAY	<i>Adviser</i>



Clonts, Holcomb, McDonald, Bridges, Stroud, Clayton, Thompson, Ayers, Kay, Adams, Hodges, Moore, Wyrick, Johnson . . .
Sara Beggs (not shown).

Hiltonian Staff



RUTH WHITFIELD *Editor*

ELREE BRIDGES *Associate Editor*



SIDNEY MOODY *Managing Editor*

JOE MAHAN *Faculty Adviser*



First row: Vernon Ayers, James Fountain, Marion Thompson, Elree Bridges, Lee Wynn, Gertrude Stroud . . . *Second row:* Joe Clayton, Alex Weatherby, Clyde Worley, Betty Ann Carpenter, Jocelyn Lee, Helen Lunkenheimer, Tom Barnett, Dot Moore, Buddy Whitaker.

ART CLUB



OFFICERS

BILLY MOORE *President*
MARGARET HODGES *Vice-President*

SANFORD WYRICK *Secretary-Treasurer*
ELREE BRIDGES *Program Chairman*
MISS CHRISTENA TIMMONS *Sponsor*

Members: Margaret Hodges, Billy Moore, Sara Timmons, Miss Adams, Laura Russell, Sandy Wyrick, Joe Mahan, Miss Timmons, Sara Vining, Elree Bridges, Buddy Whitaker, Helen Lunkenheimer.

VETERANS' CLUB

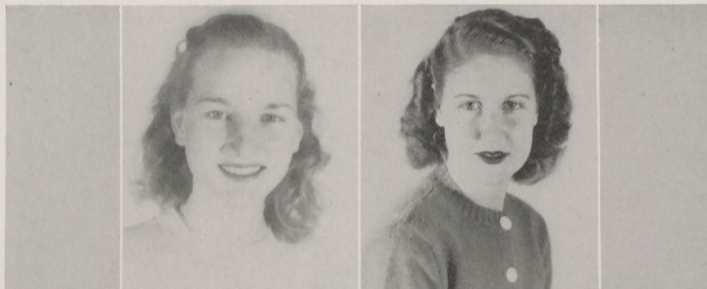


Clyde Worley, Vice-President; Dick Hadaway; Carroll Reid, President; Joe Mahan, James McDonald, Mr. Folds, Sandy Wyrick, Jimmie Shurling, Alex Weatherby, Albert Osburn; Calvin Murphy, Secretary and Treasurer; Oliver Smith, Lee Williams, Harold Turner, Hoyt McCurley, James Cline, Joe Clayton, Coy Free.

FUTURE TEACHERS OF AMERICA

"F. T. A."

SYLVIA SHURLING
President



EUGENIA COOPER
Vice-President



JACK WHITMIRE
Secretary

CAROLL REID
Treasurer

MISS CHRISTENA TIMMONS
Sponsor

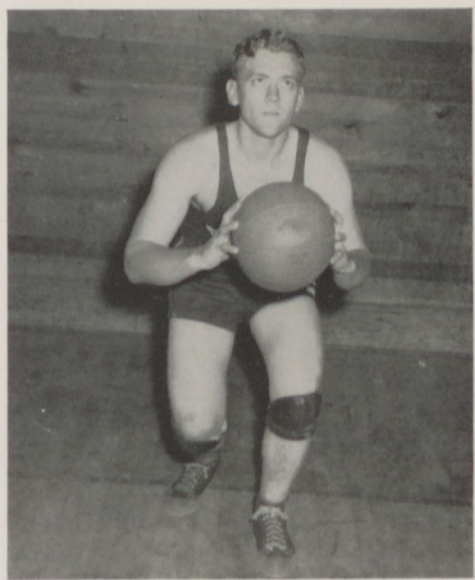
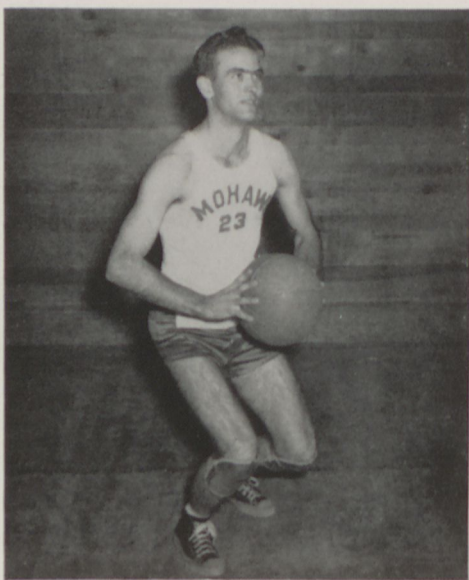


First row: Marie Cagle, Eugenia Cooper, Valmon Hasty, Sylvia Shurling, Joe Vaughn, Joyce Owen, Mary Teague . . .
Second row: Colleen Tatum, Gertrude Stroud, John Holbrook, Betty Rose McEver, Imogene Lovelace, Jack Whitmire, Rawlan Whittemore . . . *Third row:* Carroll Reid, Harold Turner, Miss Christena Timmons, Elaine Holcomb, J. C. Wallace, Jimmie Shurling.

Sports—



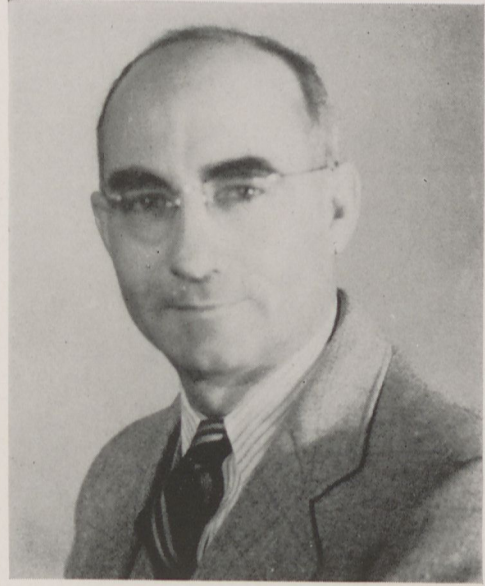
Tense Moments



Our Coaches



MISS DOROTHY RAY



REV. PLEMAN FOLDS



Tallulahs



BETTY ANN CARPENTER (Big Chief)
and
BETTY ROSE McEVER (Little Chief)



BETTY ANN CARPENTER (Big Chief)



Full Team: Mary Alice Cofer (G), Sara Timmons (G), Jocie Lee (F), Betty Rose McEver (F), little chief; Betty Ann Carpenter (F), big chief; Annette Gilman (G), Betty Cooper (G), Marie Cagle (G), Yeteva Bennett (G).

Choctaws



MARY TEAGUE (Big Chief)



MARY TEAGUE (Big Chief)
and
IMOGENE LOVELACE (Little Chief)



Full team: Ann Beale (G.), Imogene Whitaker (G.), Jean Pittman (G.), Vera Turner (F.), Mary Teague (F.), Big Chief; Imogene Lovelace (G.), Little Chief; Collene Waldrop (F.), Dot Moore (F.).

Mohawks



First team: Bobby Aaron (F.), Albert Ozburn (G.), Alex Weatherby (G.), Little Chief; Herbert Smith (G.), Clifford Davidson (F.), Marion Thompson (G.), Big Chief.



Full team: Albert Ozburn, Bobby Aaron, Alex Weatherby, Herbert Smith, Clifford Davidson, Bill Thompson, N. S. Timmons, Toombs Kay, Felix Turner, Herman Disharoon, Marion Thompson (Big Chief).

Seminoles



First team: Ed McElheney (C.), Rawlan Whittemore (G.), Little Chief; Dick Hadaway (G.), James Fountain (F.), J. C. Wallace (F.), Big Chief.



Full team: Tom Barnett, Randall Adams, Hubert Disharoon, Garnett Wilder, Lee Wyn, Glenn Forrester, John Holbrook, James Fountain, Ed McElheney, J. C. Wallace (Big Chief), Rawlan Whittemore, Dick Hadaway.

Features—



MAY DAY





HALLOWE'EN MUSEUM



"DEM BONES"



WINNING
COSTUMES

VIRGINIA
REEL



KING AND QUEEN



KEYES BOWMAN
IMOGENE WHITAKER

The King is being crowned by President J. R. Burgess.



King and Queen shown with runners-up . . . Jocelyn Lee and J. C. Wallace.

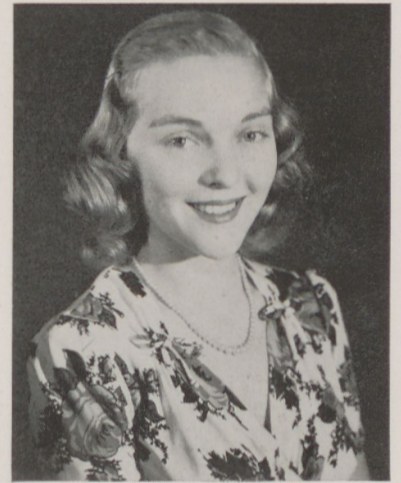
Beauty Contestants



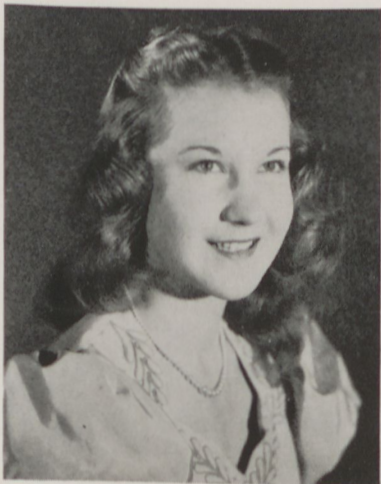
BETTY ANN CARPENTER



ELREE BRIDGES



MARGARET HODGES



DOROTHY MOORE



JOCELYN LEE



JOYCE OWEN



IMOGENE WHITAKER



First Beauty of the Campus: Dorothy Moore



Second Beauty: Betty Ann Carpenter



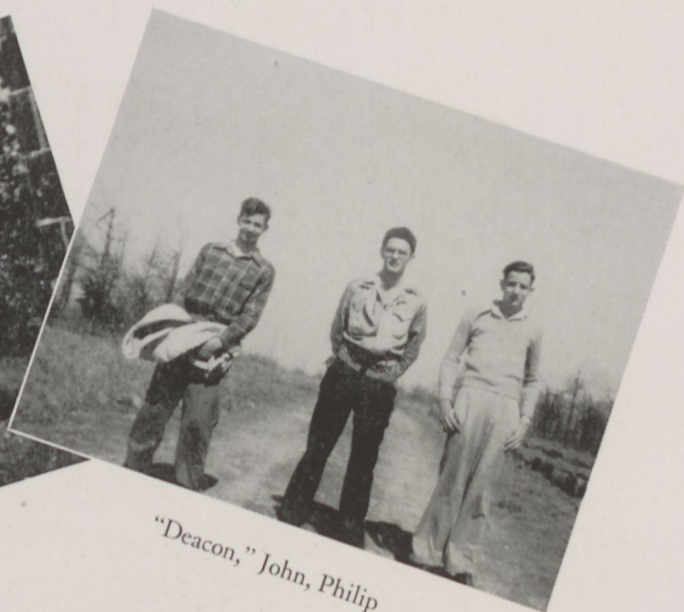
Third Beauty: Elree Bridges



Fourth Beauty: Jocelyn Lee



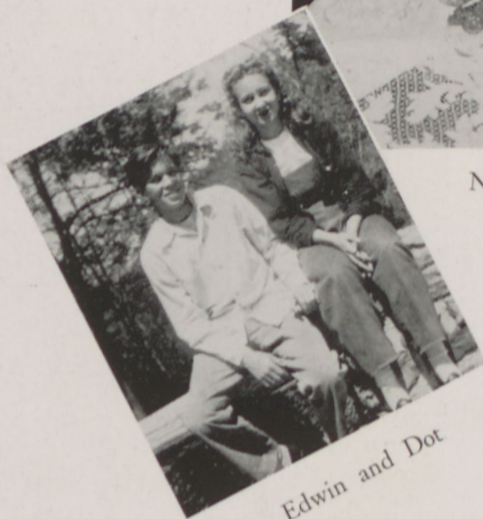
Elree and Keyes



"Deacon," John, Philip



Newly-Weds



Edwin and Dot



Always late!

College Superlatives



Most Likely to Succeed
Elree Bridges, Sanford McDonald



Best All Around
Ruth Whitfield, Carol Reid



Most Intelligent
Ruth Whitfield, John Eberhardt

Superlatives



Most Witty

Gertrude Stroud, Jack Whitmire



Most Athletic

Mary Teague, J. C. Wallace



Most Attractive

Elree Bridges, Clyde Worley

Superlatives



Most Studious

Ruth Whitfield, John Eberhardt



Most Friendly

Elree Bridges, Keyes Bowman



Most Talented

Elree Bridges, Billy Moore



Most Popular

Eugenia Cooper, Caroll Reid

High School Superlatives



Most Likely to Succeed
Edwin Dickson and Virginia Whitaker



Most Witty
Edwin Dickson and Edna Veatch



Best All Around, Most Popular
Baron Pope and Virginia Whitaker



Most Intelligent, Most Studious
Edwin Dickson and Mary Welden

High School Superlatives

Most Talented

Edwin Dickson and
Helen Lunkenheimer



Most Friendly

Bill Cline and Edna Veatch



Most Attractive

Baron Pope and Sara Vining



Governor Thompson
speaks to school . . .



Scenic drive to Waleska



Dr. S. C. Dobbs and his dog "Bob"



Historic water tank



Pastor's home



Waleska square



Reinhardt's first
diploma



1-5 Pine Log Day

6-8 Vogel State
Park

9-13 Miscellaneous

BANK OF CANTON

CANTON, GEORGIA

•

*Serving Cherokee and surrounding territory
for more than 55 years*

•

Member of Federal Deposit Insurance Corporation

JONES MERCANTILE COMPANY

Sixty Years and More at Canton

Department Store

Merchandise

COTTON and FERTILIZER

•

Canton—Cartersville—North Canton
Canton, Georgia

Bus Stop Cafe

Good Wholesome Food

★

Golden Brown Fried Chicken

Oysters

Steaks

Chicken Liver

French Fries

Regular Dinners

Frosted Malted

★

PHONE 357

CANTON, GA.

★

Cochran's Jewelry

★

Canton, Georgia

★

*Congratulations to the students of
Reinhardt on publishing their first
Year Book,*

"THE CHEROKEE PHOENIX"

◆

Eugene Owen..County School Supt.
D. J. McCurley..Tax Commissioner
Walter F. Owen.....Ordinary

Compliments of

J. R. BEARD & SON

★

GROCERIES AND MEATS

★

CANTON, GEORGIA

Compliments of

Western Auto Asso. Store

AUTO PARTS AND HOUSEHOLD
ACCESSORIES

•

Phone 63

CANTON, GEORGIA

CANTON DRUG CO.

The Rexall Store

•

Prescription Druggist
School Supplies
Candies
Soda Fount

•

PHONE 1

CANTON, GEORGIA

CANTON MOTOR SALES

WRECKER SERVICE & REPAIR SHOP

•
*Kaiser—GMC Trucks—Frazer
Frigidaire*
•

CANTON, GEORGIA



W. P. STEPHENS LUMBER CO.

•
The Department Store of the Building Industry
•

Telephone 840

At the BIG RED SIGN on Church Street in Marietta

SAVE WITH SAFETY!

Current Dividend Rate 3% Per Annum, Payable January 1 and July 1
Savings Insured Up to \$5,000.00—Inquiries by Mail Solicited

A. D. LITTLE, *Pres.*
P. B. LATIMER, *Vice-Pres.*
JORDAN GARDNER, *Attorney*

J. GUY ROBERTS, *Attorney*
RUTH N. STORY, *Asst. Secy.*
ROSSER N. LITTLE

WM. D. LITTLE, *Secy.-Treas.*

Marietta Federal Savings & Loan Association

112 Atlanta St., Marietta, Ga.

Compliments of...

Etowah Bank

★

CANTON, GEORGIA

Compliments of...

Rosenblum's

★

CANTON, GEORGIA

Best Wishes From...

DONLEY'S

★

CANTON, GEORGIA

Roberts Marble Company

*Builders of Better Memorials
for 50 Years*

★

BALL GROUND, GEORGIA

KESSLER'S

Canton, Georgia

★

The Store With Thousands
of Good Values Every Day

★

*Quality, Service,
Satisfaction*

★

THE BEST FOR LESS MONEY

Compliments of...

Morgan Brothers

The Store of Values

★

CANTON, GEORGIA

Compliments of...

Canton Theater

CANTON, GEORGIA

★

J. H. JOHNSTON COMPANY

Established 1888

GENERAL MERCHANTS

COTTON and FERTILIZERS

WHOLESALE AND RETAIL

Woodstock, Ga.

Compliments of...

Bank of Woodstock



WOODSTOCK, GEORGIA

Greetings From

**REEVES
FLORIST
SHOP**

•
**FLOWERS FOR ALL
OCCASIONS**

WOODSTOCK

GEORGIA

Compliments of

Saul's Department Store

MARIETTA, GEORGIA

Compliments

... From ...

Cobb Exchange Bank



MARIETTA

GEORGIA

The Sherwin-Williams Co.

114 Powder Springs Road

MARIETTA, GA.

PHONE 1590

PAINT HEADQUARTERS

Compliments of

Sears, Roebuck and Co.



MARIETTA, GEORGIA

Compliments...

H. E. KERLEY

JEWELERS AND OPTICIANS

26 N. Park St. **MARIETTA, GA.** Tel. 86

*For All the News of Cobb County,
Read The*

COBB COUNTY TIMES

MARIETTA, GEORGIA

"Your Friend"

LAWRENCE COBB

•
"20 Years Trying to Make This the Best
Furniture Store in Atlanta"

•
JA. 0311

271-273 MARIETTA STREET, N.W.

Marietta Federal Savings & Loan Association

•
Marietta, Georgia

CARTER GIFT SHOP

CARTERSVILLE, GEORGIA

Compliments of ...

JOHNNY WALKER

•
THE EXCLUSIVE STORE
FOR MEN

•
MARIETTA and CARTERSVILLE

Moore Truck & Tractor Co.

*International Trucks
Farmall Tractors
McCormick Deering Farm Machinery*

★
SALES AND SERVICE
JASPER, GEORGIA

LAWSON MOTOR CO.

*Sales and Service
AMOCO GAS AND OIL*

★
JASPER, GEORGIA

JASPER WHOLESALE COMPANY

★
JASPER, GEORGIA

Jasper Bargain Store

... AND ...

Robinnette's 5c-10c Store

★
JASPER, GEORGIA

Compliments of

JASPER HARDWARE

★
JASPER, GEORGIA

EMMA BRADY

MILLINERY and LADIES'
READY-TO-WEAR
JASPER, GEORGIA

Compliments of ...

JASPER THEATRE

LEE SOSEBEE, Mgr. JASPER, GEORGIA

Sam Gordon's Compliments ...

GORDON'S DEPT. STORE

★
CUMMINGS ALPHARETTA

Compliments of ..

ROY P. OTWELL

CUMMINGS, GEORGIA

Compliments
of
Friends

LUTHER CLINE

DRY GOODS, GROCERIES
AND HARDWARE

Phone 6112
WALESKA, GEORGIA

EAT AT THE

GRILL

PAUL CAGLE, *Proprietor*

WALESKA, GEORGIA

FREEMAN'S GROCERY

BOOSTS
REINHARDT COLLEGE

WALESKA

GEORGIA

Compliments of

Thompson's Grocery

HOMER THOMPSON

WALESKA, GEORGIA

*Compliments
... of ...*

Lambert Bros., Inc.

Crushed Stone Contractors

WHITE

GEORGIA

Greetings From ...

BAME'S RECORD SHOP

ON BROAD STREET
ATLANTA GEORGIA

*Congratulations on Your First
Cherokee Phoenix*

MRS. CAGLE'S CAFE

WE SERVE GOOD FOOD
WALESKA, GEORGIA

MACKEY'S BARBER SHOP

A Supporter of Reinhardt College

WALESKA

GEORGIA

The
V A R S I T Y



*Famous Throughout Georgia and the
Southeast for Really Fresh Foods*



Efficient Curb Service



ATLANTA

ATHENS

No more beautiful or more permanent material may be used in the construction of a building of any type than the pink rubble being mined from our quarry.

"Cheaper than brick, it will never require painting and it has a warmth of natural color not available in any other stone."

By keeping quarrying costs low and selling direct, we can quote prices which may enable you to save considerable money on your building plans while securing a much more desirable structure.

Troy's Roadside Market

TROY UPSHAW, *Owner*, RYDAL, GA.
10 Miles North of Cartersville, U. S. 411
Telephone Cartersville 882-W-1



Compliments of

Shinall Trucking Company

Phone 864-J
CARTERSVILLE, GEORGIA

ROBERT SHINALL, *President*
ROY SHINALL, *Vice-President*
E. C. GOODE, *Secretary and Treasurer*

AUBREY LAKE

*Located Six Miles North of
Cartersville, Ga.*

HOMER MCEVER

HUNTING—FISHING—BOATING

*Compliments
of*

Georgia Gold Dairy Products

CARTERSVILLE GEORGIA

Compliments of...

ATCO STORE

ATCO GEORGIA

*Compliments
of*

DAVIS TIRE COMPANY

ATLANTA GEORGIA

GEORGIA-TENNESSEE COACHES, INC.

BOX 207
Dalton, Georgia

The Georgia-Tennessee Coaches, Inc., has purchased new and modern equipment and is now serving the following towns with several schedules daily: Dalton, Dahlonega, Chatsworth and Lafayette, Georgia — also Chattanooga and Cleveland, Tennessee.

YOUR CONTINUED PATRONAGE
WILL BE APPRECIATED

Prices on Charter Trips will be quoted for any points in the United States. Contact our office for further information.

J. H. Graham, Gen. Mgr.

Compliments of...

U. S. CAFE

Established in 1924

AIR-CONDITIONED

DALTON

GEORGIA

Compliments

...of...

GLAMOUR SHOP

DALTON

GEORGIA

*Compliments
of*

Dalton Coca-Cola Company

Coca-Cola

Compliments from the...

FAIR STORE

CARTERSVILLE

GEORGIA

Compliments of...

DOYLE SMITH'S STORE

WALESKA

GEORGIA

Georgian Hotel

Athens, Ga.



Visit our Dining Room and
meet your friends there.



A. B. STILES, Manager

Phone 1157

Best Wishes to the Students
of
Reinhardt College
on the first publication
of the
"Cherokee Phoenix"
from

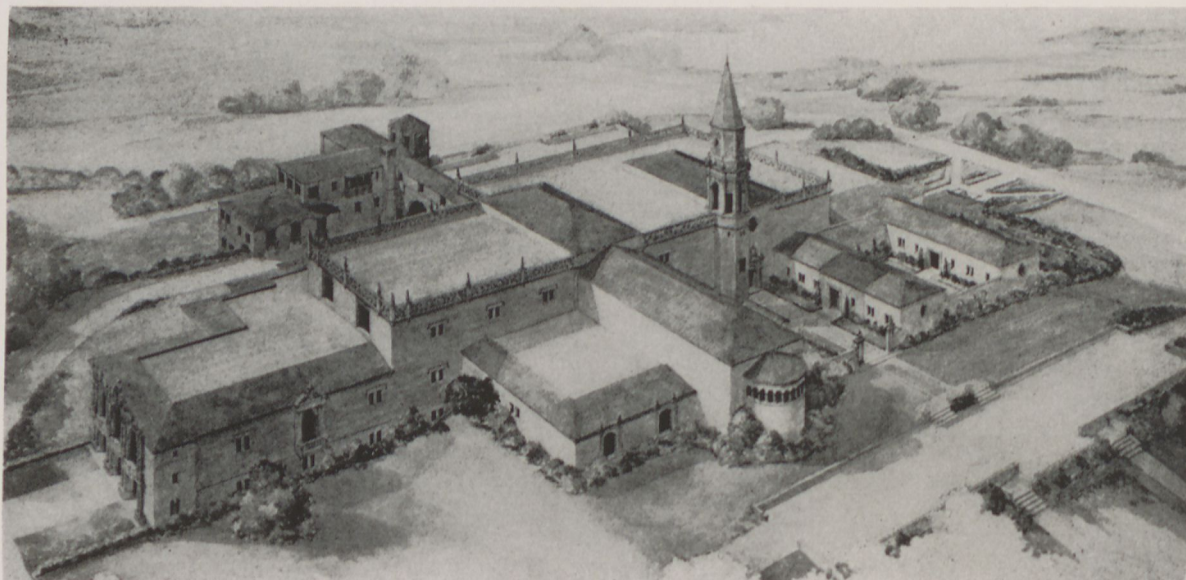
E. A. McCANLESS
CANTON, GEORGIA

Compliments
of
MOSE GORDON
COMMERCE, GEORGIA



"Wishing the students of Reinhardt
College success on their first annual."

WEST VIEW ABBEY
IN
BEAUTIFUL
WEST VIEW CEMETERY
ATLANTA



A Community Mausoleum of Surpassing Beauty
an architectural masterpiece

Built for the Ages
of granite, steel, marble and bronze

The Largest Structure of Its Kind
ever built anywhere at one time

Designed by famous architects and engineers, West View Abbey will be one of the world's finest community mausoleums . . . with more than 10,500 burial chambers . . . two magnificent chapels, spacious halls, gleaming marble corridors.

Even now, at its present stage of construction, the beauty and splendor of this great building impresses the hundreds of visitors who come to see it. You are cordially invited to visit West View Abbey when you are in Atlanta.

WEST VIEW CORPORATION
OWNERS AND BUILDERS

"I'll bring
the Coke"



Serve
Coca-Cola
REG. U. S. PAT. OFF.
at home

© 1946 The C-C Co.

BOTTLED UNDER AUTHORITY OF THE COCA-COLA COMPANY BY
MARIETTA COCA-COLA BOTTLING COMPANY

Our Atlanta office wishes for Reinhardt students much success in the publishing of their first year book.

GOOD
FOOD

FOR



PLEASED
GUESTS

JOHN Sexton & co.

CHICAGO—LONG ISLAND CITY
DALLAS—ATLANTA—PITTSBURGH—DETROIT

Old graduates and students
alike find their compliment-
catching costumes at



THE BEST DRESSED MEN WEAR

SCHWOBILT
C L O T H E S REG. U.S. PAT. OFF.

A GREAT NAME IN CLOTHING

"SCHWOBILT SUITS THE SOUTH"
SCHWOB COMPANY OF GEORGIA, COLUMBUS, GEORGIA

OUR ADVERTISERS

ARE OUR FRIENDS AND THE FRIENDS
OF REINHARDT COLLEGE. THEY MAKE
POSSIBLE THE PUBLICATION OF THIS
ANNUAL. WHEREVER AND WHENEVER
POSSIBLE SHOW YOUR APPRECIATION
BY PATRONIZING THEM!

ANNUALS
of
DISTINCTION

Bowen, Long & Young, Inc.
Decatur, Georgia

