

1952



The

CHEROKEE PHOENIX

James R. Waters







Lithographed by

TAYLOR

PUBLISHING COMPANY

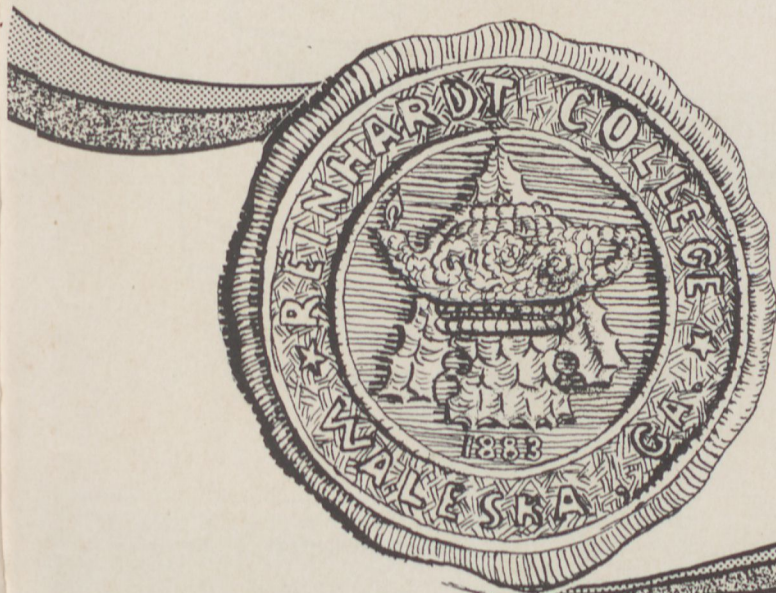
DALLAS,

TEXAS

Taylor-made MEANS BETTER YEARBOOKS

The **CHEROKEE PHOENIX**

REINHARDT COLLEGE
WALESKA, GEORGIA



1952

Foreword

Herein is your reminder of a few, perhaps, of the happiest days of your life. May you preserve it, cherish it, and forever hold it dear. May this book serve to revive the love which exists in the inner recesses of your heart for Reinhardt, your school, and may it in later years serve as an unbreakable bond which links to you the friends that you have made here.

CHEROKEE PHOENIX STAFF



Dedication



To MISS CHRISTENA TIMMONS, who was faculty sponsor of the first Cherokee Phoenix; whose life exemplifies high character, scholarship, and unselfish service; who has been a faithful friend, skillful instructor, and a wise counselor; and whose loyalty and devotion to God, to her fellowman, and to Reinhardt has been an inspiration to all of us.

We dedicate this, the 1952 edition of
THE CHEROKEE PHOENIX

Note: The above dedication was voted unanimously by the staff, in the absence of the faculty advisor and editor, at a special meeting in the president's office on January 14, 1952.





DOBB'S BUILDING
Vocational Arts and Sciences



DOBB'S COTTAGE



PASTOR'S HOME



KNOX HOUSE



DAIRY



BARN



GIRLS' DORMITORY



BOYS' DORMITORY



GYMNASIUM

ELEMENTARY SCHOOL
Practice school for the
education classes.



Office



OUR LEADERS



J. R. BURGESS, Jr.
President

President's Message to the Members of the Class of 1952:

To learn much about things and little about people is a mistake.
To care much about things and little about people is life's greatest tragedy.
May each of you find real happiness in making others happy.

Sincerely yours,

J. R. BURGESS, JR.

MR. DAN WAGES
Registrar





CARL TARPLEY
 Waleska, Georgia.
Principal, Reinhardt High
 School
 Teacher of Education, Rein-
 hardt College
 A.B., Piedmont College
 M.Ed., Georgia University



DECORA ADAMS
Dean of Women



JOHN CAMPBELL
Dean of Men



REV. REYNOLDS GREENE, JR.
Waleska, Georgia

A.B., B.D., Emory University
Religious Life, Bible, Psychology



WILLIAM C. STONE
Mountville, Pennsylvania

M.M., B.M., University of Roanoke
Music Director, Piano Instructor



CHRISTINA TIMMONS
Waleska, Georgia

B.S., G.S.C.W.
University of N.C.
Library Science, Librarian, Education

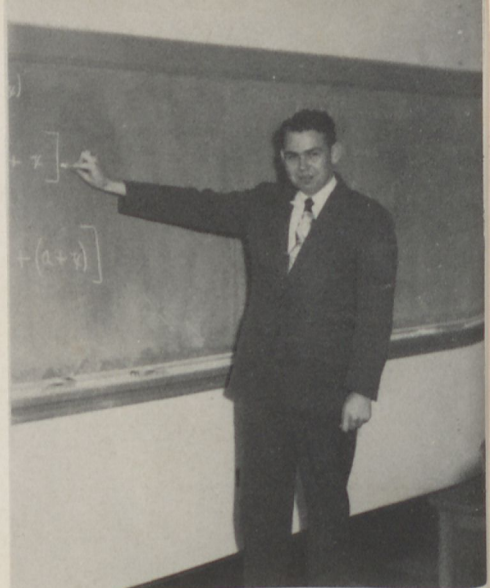


GRACE HADAWAY
Buford, Georgia

A.B., LaGrange College
M.A., University of Georgia
French, English



CAROL WORTMAN
Casar, North Carolina
B.S., High Point College
Home Economics Department



DEAN BOSWELL
Mt. Pleasant, Miss.
B.S., M.S., Miss. St.
Mathematics Department



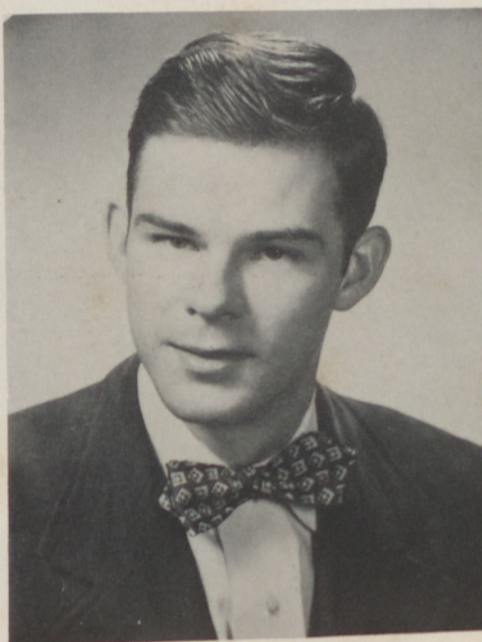
DAN S. WAGES
Greenville, S. C.
M.A., Columbia University
Social Science



MRS. J. R. BURGESS
Waleska, Georgia
Eighth Grade



STANLEY HANSON
Waleska, Georgia
B.A., M.S., Emory University
Science Department



WILLIAM GATLIN
Griffin, Georgia
B.A., Journalism
University of Georgia



DECORA ADAMS
Royston, Georgia
B.A., G.S.C.W.
M.A., University of Ga.

PERSONNEL



BARBARA BURREL
Holly Springs, Georgia
Secretary to the President

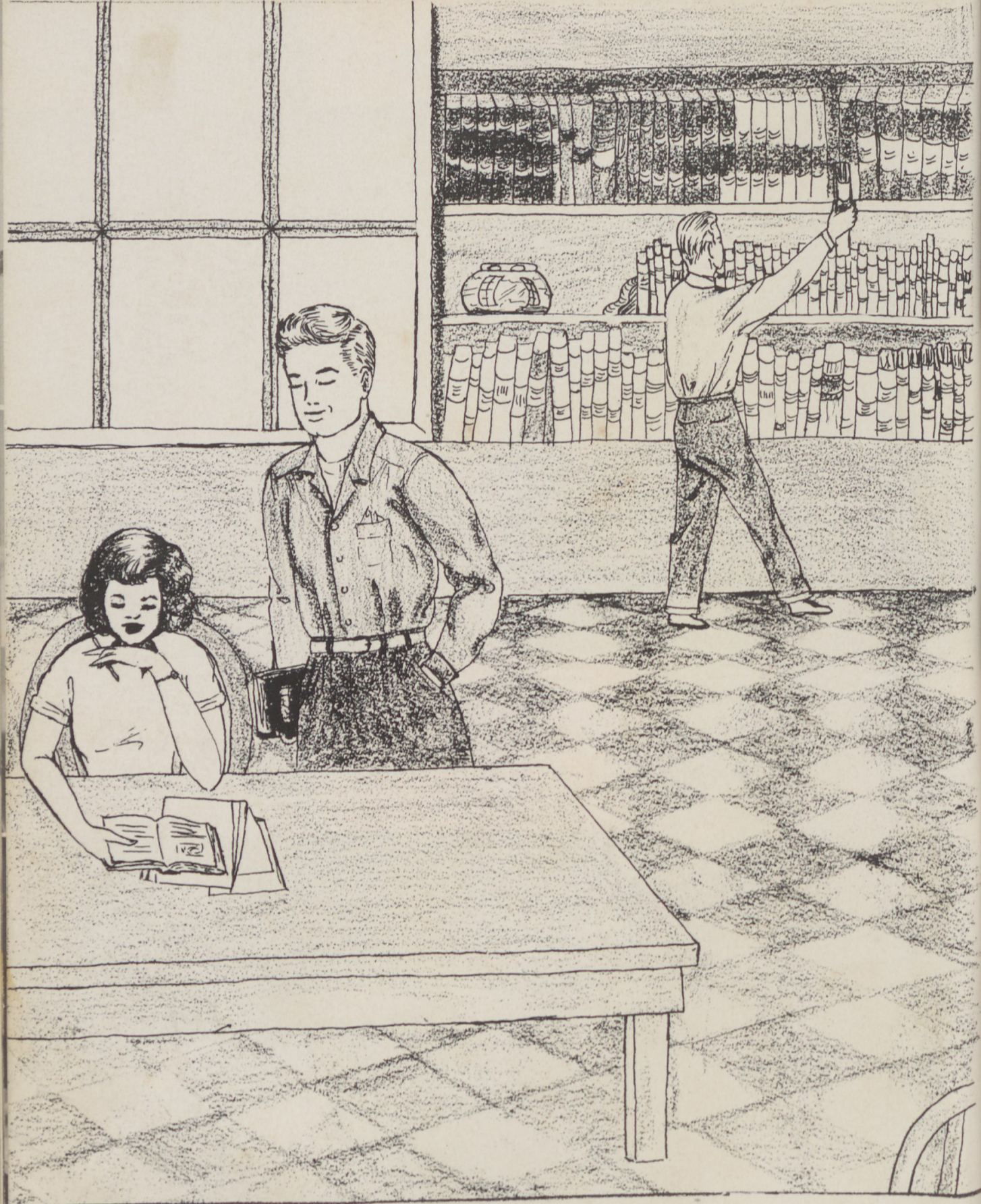
MRS. TINA McDANIEL
Matron of the Girls' Dormitory



MR. CLYDE MOORE
Superintendent of Buildings

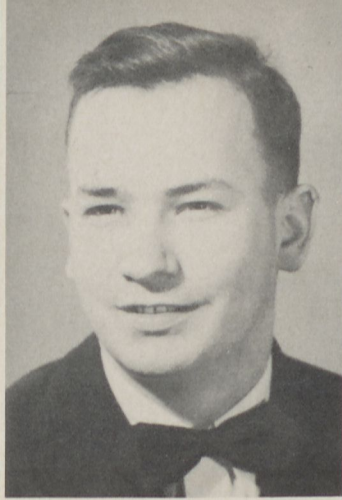
MRS. KATHERINE BROWN
Dietician





WE STUDY

SENIORS

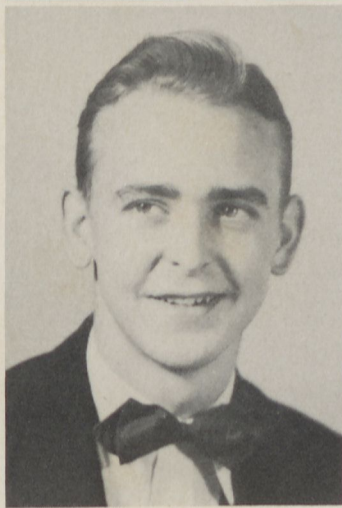


REBA ADDISON

Marietta, Georgia
Phi Alpha, President, 1st Quarter '51;
Choctaw.

JOHN ANDERSON

Madison, Georgia
Ministerial Conference; Pierce; Chaplain
1st Quarter '51; Youth Fellowship;
Seminole.



RICHARD BARNES

Columbus, Georgia
Haygood; Seminole.

JERRY BROOKS

Commerce, Georgia
Pierce; Mohawk.

BETTY CAGLE

Jasper, Georgia
Pi Epsilon; Phi Delta, Vice President,
1st Quarter '51-'52; Tallulah; Annual
Staff, Social Editor; Hiltonian Staff.

VIRGIL CHANDLER

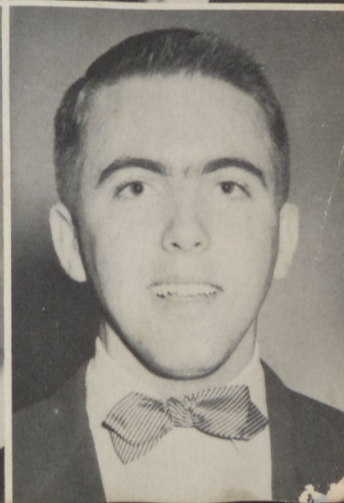
Dupont, Georgia
Pi Epsilon; Pierce, President; Youth
Fellowship; Mohawk; Blue and Gold,
Editor.

PAT CHAPPELEAR

Menlo, Georgia
Pi Epsilon, Secretary-Treasurer, '50-'51;
Phi Delta, Vice President, '50-'51, 3rd
Quarter, President, '51-'52; 1st Quarter
Youth Fellowship, Pianist 1st Quarter
'50-'51; '51-'52 2nd Quarter; Tallulah;
Little Chief, '51-'52; Glee Club '50-'51;
'51-'52; Annual Staff, Class Editor
'51-'52; Blue and Gold Staff.

BOBBY CLEGHORN

Canton, Georgia
Pierce; Seminole.

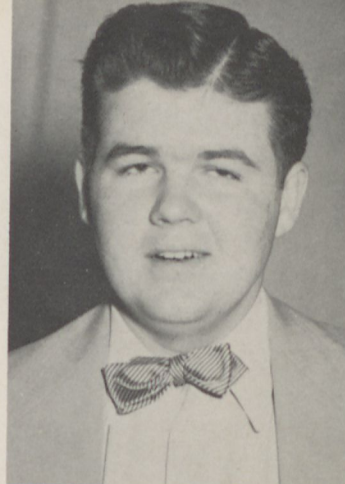


BILLY CLEGHORN

Canton, Georgia
Pierce; Mohawk.

EVELYN COCHRAN

Waleska, Georgia
Alpha; Tallulah; Pi Epsilon.



LOU ANN COOPER

Dalton, Georgia
Phi Alpha, Secretary, 1st Quarter '51;
Tallulah; Glee Club.

MALLENE COX

Rome, Georgia
Phi Alpha; Youth Fellowship, Pianist;
Tallulah; Glee Club, Pianist '51-'52.



TOMMY CRAWFORD

Perkins, Georgia
Haygood, Vice President '50-'51; Semi-
nole; Youth Fellowship.

LINDA DOSS

Canton, Georgia
Phi Alpha; Pi Epsilon; Tallulah.

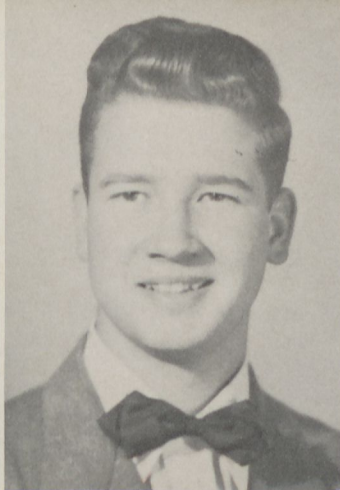


ALVIN EARWOOD

Cartersville, Georgia
Pi Epsilon; Pierce, Secretary-Treasurer;
Mohawk; Hiltonian Staff, Sports Writer;
FTA.

VEDA EVANS

Ellijay, Georgia
Pi Epsilon; Alpha; Tallulah.

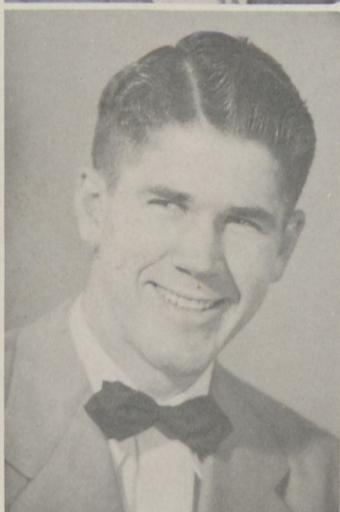


CAROLYN FREE

Blue Ridge, Georgia
Choctaw, F.T.A.; Glee Club 1950; Phi Delta.

STANLEY GIBBS

Canton, Georgia
Haygood; Seminole.



DONALD HANBERRY

Clyo, Georgia.
Ministerial Conference, Vice President '51, President '52, 2nd Quarter; Pierce; Youth Fellowship, Vice President '51-'52; Seminole; Annual Staff, Sports Editor; Glee Club '50-'51.

JACK HESTER

Canton, Georgia.
Haygood; Sergeant-at-Arms; Mohawk.

BOBBY HOLCOMBE

Canton, Georgia.
Mohawk; Pierce, Sergeant-at-Arms.

MARY JEANNE JOHNSON

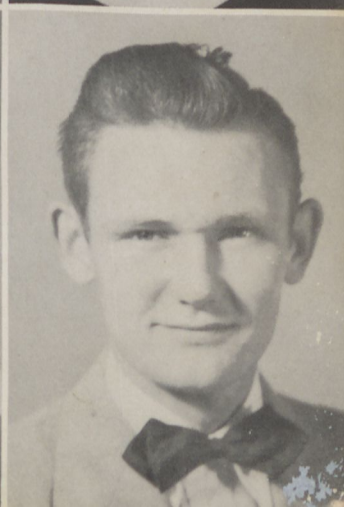
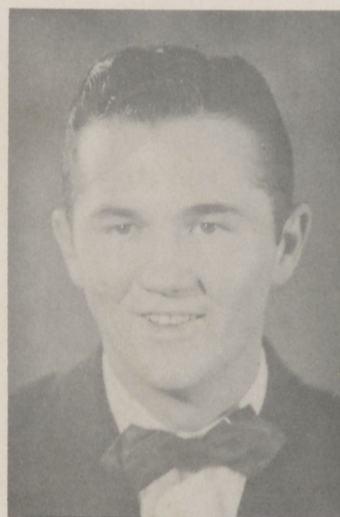
Canton, Georgia.
Pi Epsilon; Phi Alpha; Choctaw; Glee Club '50-'51.

ANN LANGSTON

Roswell, Georgia.
Ministerial Conference Secretary, Program Chairman, Vice President; Pi Epsilon; Phi Delta, Secretary; Youth Fellowship, Assistant Treasurer; Hiltonian Staff, Assistant News Editor; Blue and Gold Staff; Glee Club.

DONALD LEDBETTER

Canton, Georgia.
Pierce; Seminole; Pi Epsilon.



EDNA LOVELACE

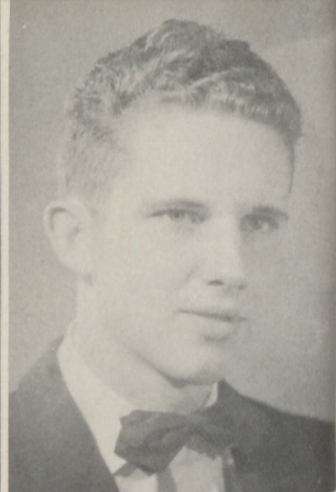
Ball Ground, Georgia.

Choctaw; Big Chief; F.T.A.; Phi Alpha,
Treasurer; Glee Club.

SYROL McLAIN

Franklin, Georgia.

Mohawk; Little Chief '51-'52; Haygood,
Reporter '51-'52; Youth Fellowship;
World Friendship.



BETTY ANN MAY

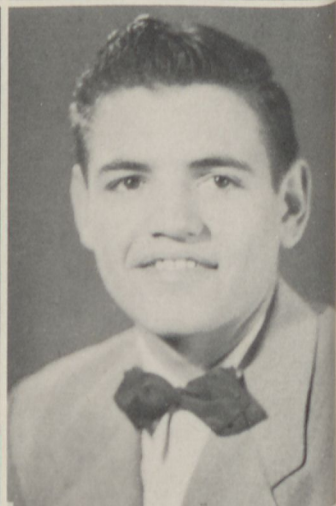
Calhoun Falls, South Carolina.

Phi Delta; Tallulah; Pi Epsilon, '51-'52.

ERNEST MOORE

Buford, Georgia.

Haygood, Vice President '51-'52; Semi-
nole; Big Chief; Hiltonian Staff,
Reporter '50-'51.



JACKIE MYERS

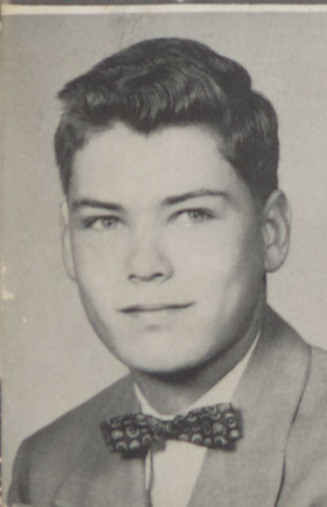
Cumming, Georgia

Pi Epsilon; Phi Alpha, Vice President
'51-'52; Tallulah.

JUNE NELSON

Manchester, Georgia.

Phi Delta, Secretary-Treasurer '50-'51;
Choctaw, Little Chief '51-'52; Glee
Club '51-'52.



EDWIN OLDHAM

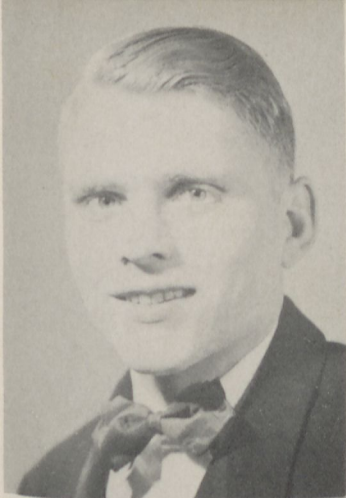
Athens, Georgia.

Haygood; Mohawk; Glee Club '50-'51.

JEANNE PARRIS

Canton, Georgia.

Phi Alpha, President '51-'52 2nd Quar-
ter; Tallulah; Pi Epsilon '50-'51; Glee
Club '50-'51, '51-'52.



WALT PENDLEY

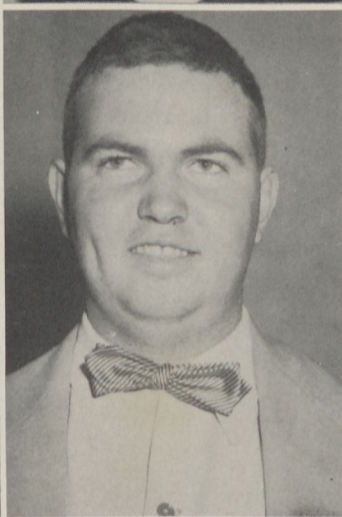
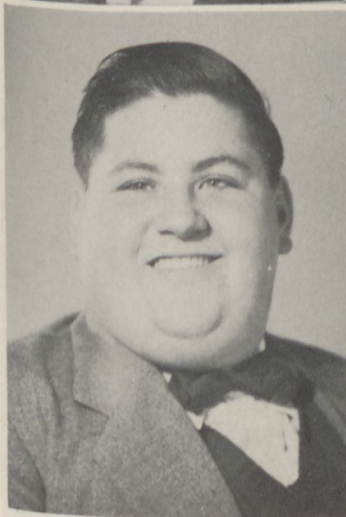
Tate, Georgia

Haygood, Secretary-Treasurer '51-'52;
Mohawk; FTA.

BETTY PITTMAN

Canton, Georgia

Phi Delta, Chaplain '51-'52; FTA
'51-'52; Choctaw.



TOMMY QUINTON

Talking Rock, Georgia

Junior Class Vice President; Senior Class
Vice President; Pi Epsilon, Treasurer
'51-'52 1st Quarter; Haygood Sergeant-
at-Arms '50-'51, President 1st and 2nd
Quarter '51-'52; Youth Fellowship,
Treasurer '51-'52; Annual Staff, Busi-
ness Manager '51-'52; Mohawk; Hil-
tonian Staff, Circulation Manager, News
Editor; FTA, Librarian '50-'51, Presi-
dent '52; Blue and Gold Staff, Assistant
Editor; President Boys' Dormitory.

JACK SMITH

Haygood; Seminole.

EARNSHAW, SOSEBEE

Cumming, Georgia

Mohawk, Big Chief '51-'52; Pierce,
Secretary-Treasurer '50-'51, 3rd Quarter;
Annual Staff, Assistant Business Man-
ager; FTA, President '51-'52.

ANNE STARR

Athens, Georgia

Phi Alpha; Tallulah; FTA; Glee Club
'50-'51, '51-'52.

JAMES STEPHENS

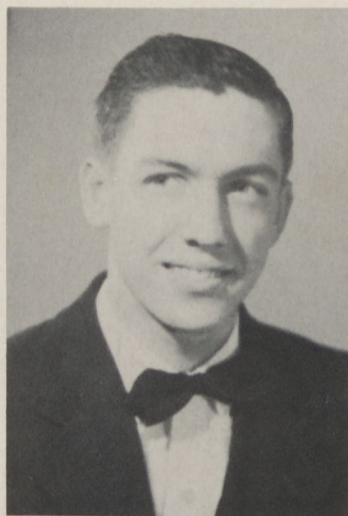
Canton, Georgia

Pierce; Seminole.

LOIS TATUM

Dawsonville, Georgia

Ministerial Conference, Publication
Chairman '50; Pi Epsilon, President
'51-'52; Phi Delta, President '50-'51,
Parliamentarian '51; Tallulah; Hiltonian
Staff, Reporter '50-'51; Editor '51-'52;
Glee Club '51-'52.



SARA TIMMONS

Waleska, Georgia.

Pi Epsilon, Secretary '51-'52 1st quarter; Phi Delta, Vice President 2nd Quarter '51, President 2nd Quarter '51-'52; Tallulah; Annual Staff, Editor-in-Chief; Hiltonian Staff, Reporter '51; Glee Club.

GRACE WEHUNT

Jasper, Georgia.

Pi Epsilon, Vice President '51-'52; Phi Delta, Secretary '51-'52; Choctaw; Hiltonian Staff, Reporter '52; F.T.A.; Librarian Dorm., President.



MARY SUE WESTBROOKE

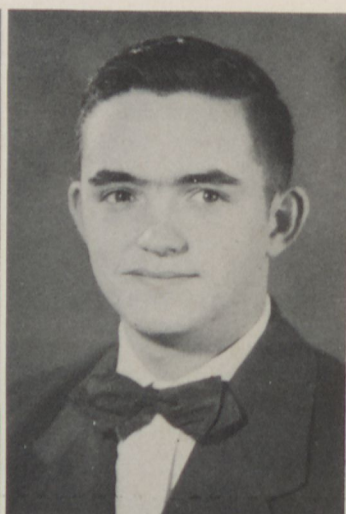
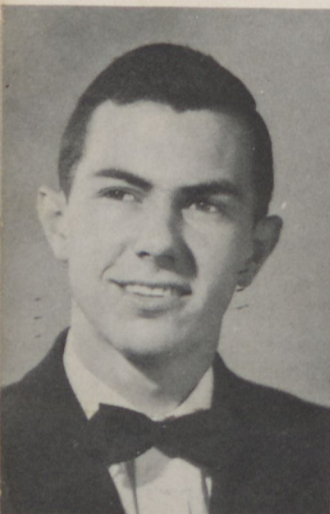
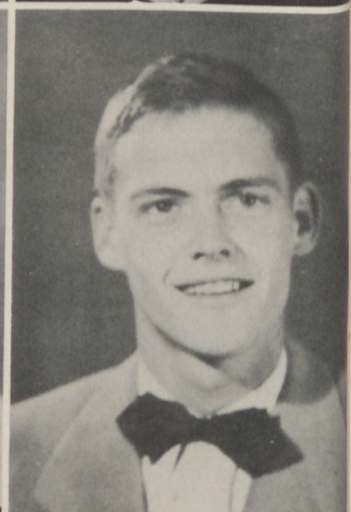
Cornelia, Georgia.

Ministerial Conference, Vice President and President; Pi Epsilon; Glee Club; Phi Delta, Chaplain and Vice President; Youth Fellowship, Treasurer; Tallulah; Hiltonian Staff.

ROBERT WHITTEMORE

Calhoun, Georgia.

Pi Epsilon, Treasurer; Haygood; Youth Fellowship, President; Seminole; Little Chief '51-'52.



JARNETT WIGINGTON

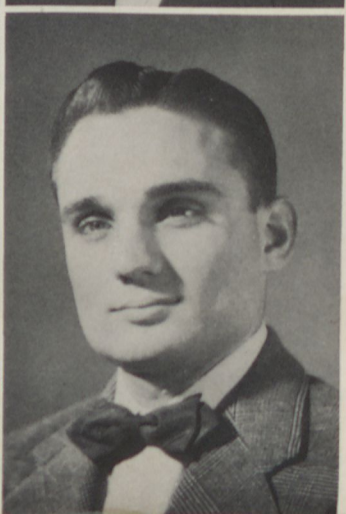
Canton, Georgia.

Pi Epsilon; Pierce, Vice President; Seminole.

RUBEN WILSON

Canton, Georgia.

Haygood; Seminole.



SHIRLEY WILSON

Summerville, Georgia.

Phi Delta; Choctaw; F.T.A.; Glee Club.

TRAVIS WOODWARD

Atlanta, Georgia.

Haygood, Chaplain; Seminole; Ministerial Conference, President; Senior Class, Secretary and Treasurer.



JO YARBOROUGH

Commerce, Georgia.

Ministerial Conference '50-'51; Alpha;
Youth Fellowship; Choctaw; Cheer-
leader; F.T.A. '50; Glee Club.

MR. BOSWELL

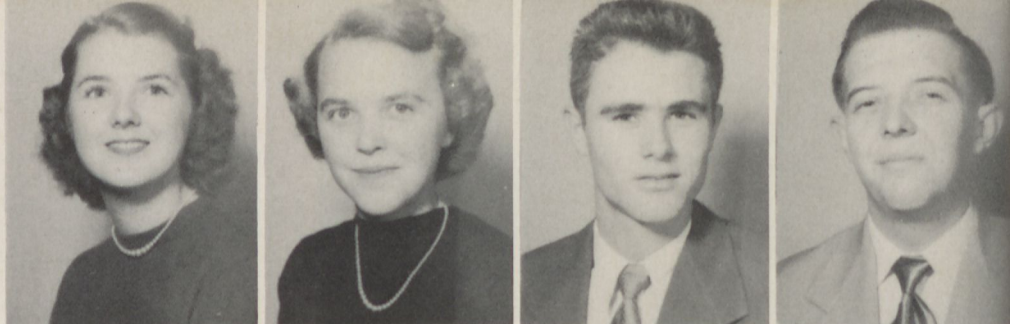
Sponsor

SENIOR SNAPSHOTS

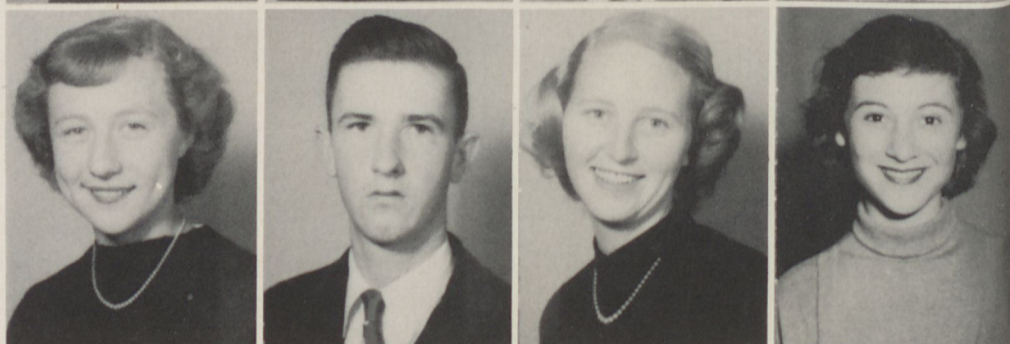


JUNIORS

Yeteva Bennett
Barbara Bishop
Richard Blackstock
Bill Braswell



Beulah Grace Cline
Jack Cline
June Cline
Mary Jane Cornelison



Miller Davis
Edward Deen
Geneva Dickerson
Hebert Dodd



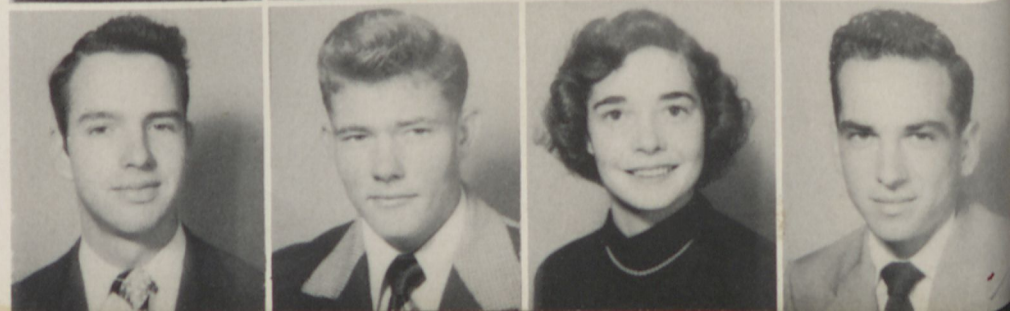
Roger Early
Betty June England
Charlotte Estes
Lois Fossett



Fannie Lou Gordon
Robert Hansard
Bobbie Lou Hawkins
Sara Helton

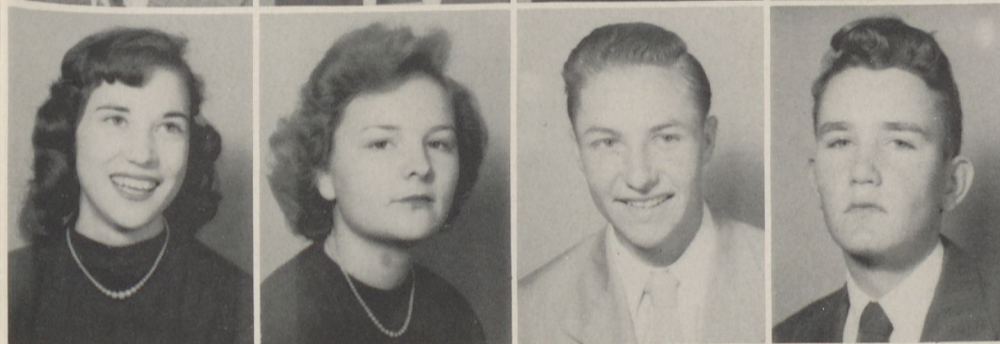


William Hillhouse
Roger Hopkins
Betty June Hulsey
Joe Hulsey

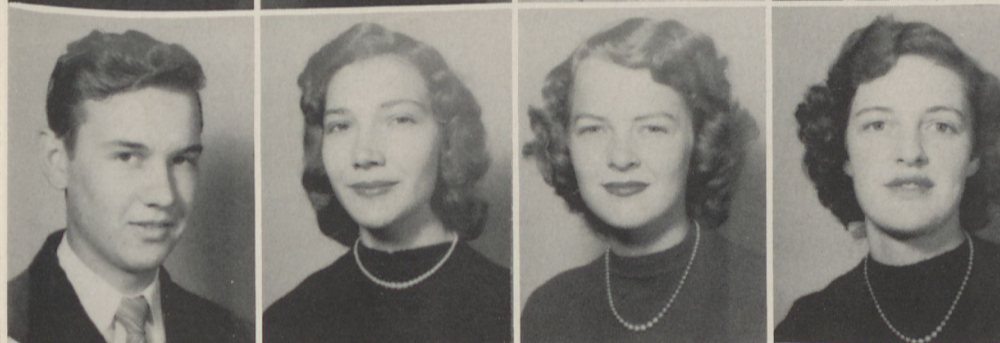




Lanier Ingram
Jimmy Johnson
Jane Johnson
Joan Johnson



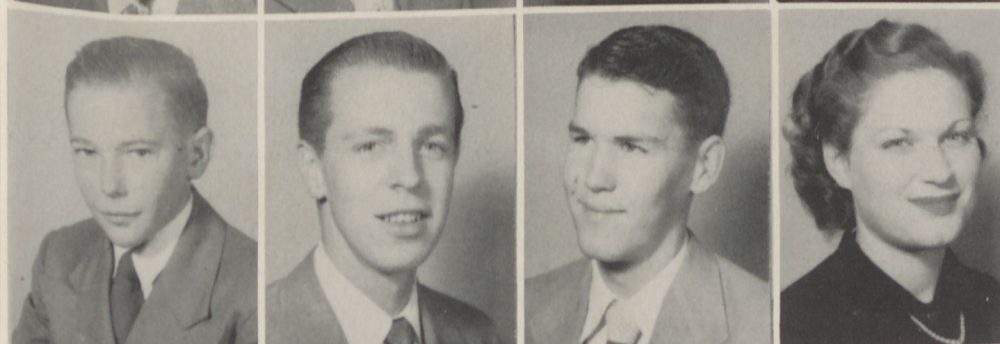
Joyce Kennedy
Bobbie Jean Lanier
Jimmy Major
Richard Manus



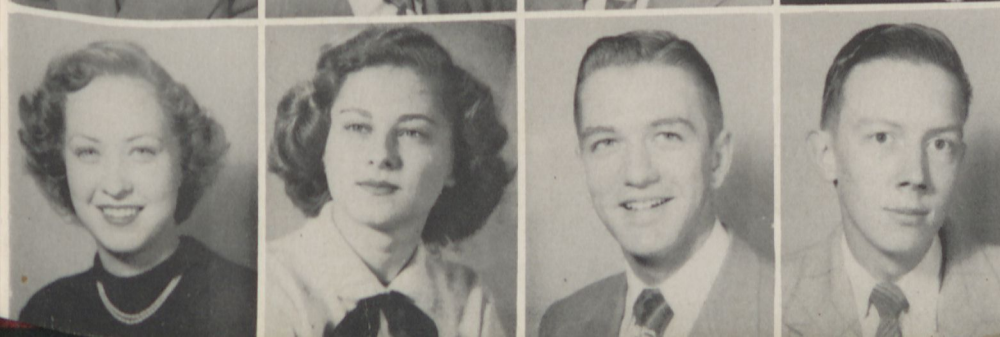
Thomas Marshall
Sue Mills
Doris Mitchell
Lora Mae Mitchell



Charles Mobley
Ronald Morris
Ann Moss
Louise Nelson



Ted Phillips
Billy Pilgram
Frank Poole
La Trelle Powell



Marion A. Powell
June Quinton
Douglas Reid
Otis Smith

Jo Anne Spense
Carolyn Vaughn
Kyla Jo Ward
Jeanne White



Gerry Whitfield
Dixie Carlock
Peggy Howard
Charles Newborn

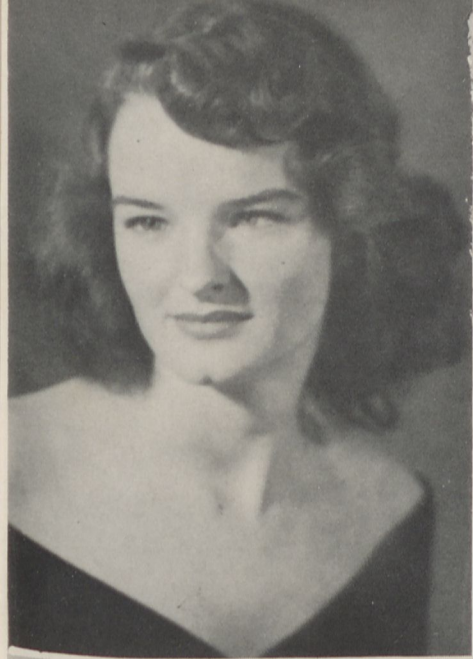


Christene Cantrell
Levi Cornelison
Betty Corley
Carol Wortman



CLASSROOM SCENE





JUNE CHILDERS
Waleska, Georgia

GRACE COCHRAN
Waleska, Georgia



FRANCES DAVIS
Ellijay, Georgia

MARIAN POWELL
Sandy Springs, Georgia



SPONSOR
Mr. Dan Wages

HIGH SCHOOL SENIORS

ELEVENTH GRADE

Mozelle Blanton
Jerry Dobson
Joyce Dobson

Bryce Gramling
Collene Poole
Marjorie Touchton

James Waters
Ira Jean Woodall
SPONSOR
Mr. William Stone

Chapel in the New
Auditorium



TENTH GRADE

Betty Moss Bailey
Mary Ann Barnes
Luis Bayon
Margaret Bennett

Joyce Brooks
Estelle Cagle
Stella Mae Cantrell
Alfred Dutton

Anne Edwards
Jimmy Ellison
Joyce Eubanks
Candis Garland

George Haroldson
Deloris Hightower
Sonny Owen
Sue Parker

Frankie Pharr
Luis Pineda
Betty Jean Ponder
Nell Ponder

Joyce Pritchard
Margie Rutledge
Bobby Tillander
Lucy Wilder

Not shown

Ted Sawyer
James Pharr
Lloyd Payne
Jean Bohanan
Monnie Blanton
T. W. Hobgood

Robert Worley

SPONSOR
Mr. William Stone

NINTH GRADE



Rachel Blanton
Martha Burgess
Glenn Byers
Nell Childers



Charles Cline
Billy Cline
Betty Cline
Joe Cline



Elizabeth Crowe
Geraldine Dickerson
David Dodd
Peggy Donahue



Wayne Eubanks
Lilly Mae Garland
Betty Ruth Ghorley
Dorothy Haroldson



Richard Horn
Howard Hughes
Lee Largen
George Long



Mary Elizabeth Marshall
Frances McDaris
Bobby Jack Payne
Sue Roberts



Hal Snow
Mary Jo Thompson
Inez Arnold
Nora White



Jerry Wright
Martha Worley
SPONSOR
Miss Grace Hadaway

Not shown

Ernest Smith
Essie Payne
Gene Edwards

EIGHTH GRADE

Margaret Allison
Mildred Darbey
Jerry Durham
Lee Garland

Herman Garland
Charles Gramling
Becky Howell
Charles Hufstetler

Shirley Jarvis
G. C. Jarvis
Betty Moore
Jerry Moody

Brook McCoy
Ruth Parris
Eugene Parker
Betty Ratcliff

Jenna Lee Robertson
Sue Scott
Milburn Worley
Thary White

Billy White
Beverly Cowart
Shirley Jarvis



Eighth Grade not shown

Patsy Barnes	Roy Garland
Peggy Barnes	J. H. Greene
Cecil Blalock	John C. Jordan
Grace Cagle	Otto Little
Annie Callahan	Brook McCoy
Clarence Childers	Charles Pharr
James Coker	Pat Pharr
J. W. Fields	Beatrice Romine
	Shirley Roberts

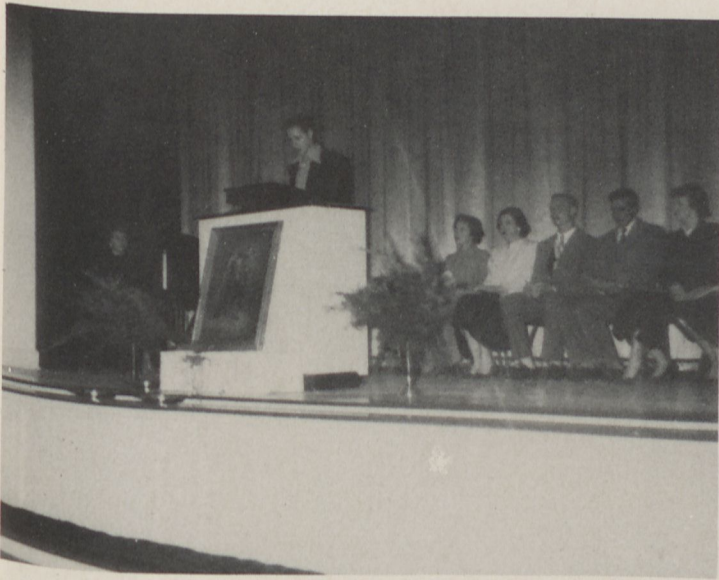
SPONSOR
Mrs. Burgess





WE WORSHIP

MINISTERIAL CONFERENCE



MEMBERS

Charlotte Estes, John Anderson, Ann Langston, Travis Woodward, Mary Sue Westbrook,
Donald Hanberry, Jo Yarborough, Betty June England, Lois Tatum, Jeanne White.

YOUTH FELLOWSHIP



SECOND QUARTER STUDENT COUNCIL

Travis Woodward, Virgil Chandler, Robert Whittemore, Edward Deen, Richard Manus, Donald Hanberry, Roger Earley, Lois Tatum, Charlotte Estes, Pat Chapplear, Ann Langston, Mary Sue Westbrook.



SPONSOR
Miss Adams



SPONSOR
Mr. Greene



FIRST QUARTER STUDENT COUNCIL

Donald Hanberry, Virgil Chandler, Robert Whittemore, Bill Pilgrim, Jimmy Johnson, Betty Hulsey, Mallene Cox, Lois Tatum, Betty June England, Mary Sue Westbrook.



GLEE CLUB



OFFICERS

President Ernest Moore
Secretary Sara Timmons
Pianist Mallene Cox



DIRECTOR
 Mr. William Stone



WE WORK



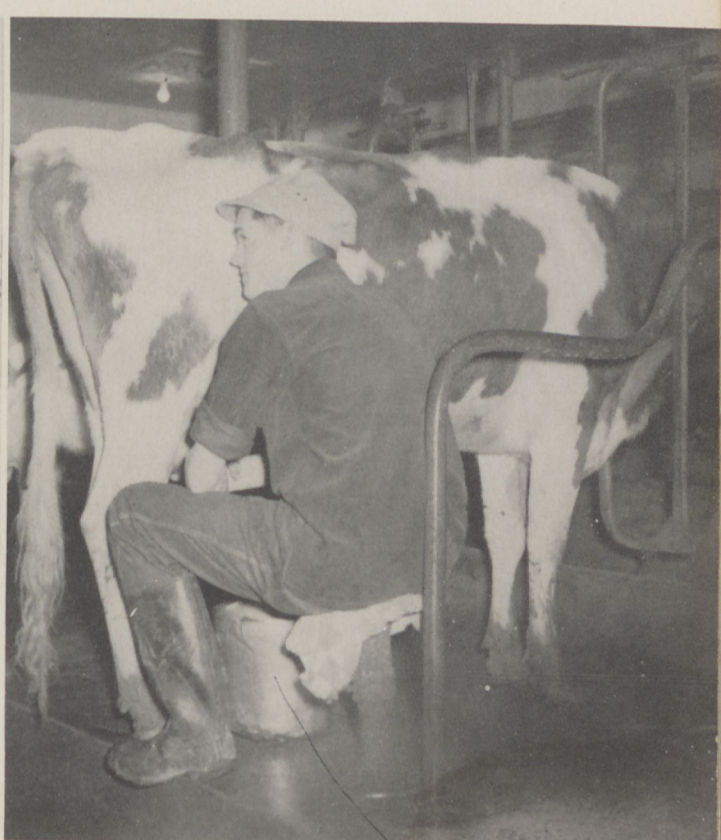
IN THE DAIRY



IN THE OFFICE



IN THE KITCHEN



IN THE DAIRY



In the
dining hall



On the
walks

In the boys'
dormitory





WE PUBLISH



PHOTOGRAPHER
Buddy Alexander



ARTIST
June Childers

CHEROKEE PHOENIX STAFF



STAFF—Sponsor, Miss Christena Timmons; Editor-in-Chief, Sara Timmons; Assistant Editor, Bill Pilgrim; Business Manager, Tommy Quinton; Business Staff, Betty June England, Ernshaw Sosebee; Sports Editor, Donald Hanberry; Social Editor, Betty Cagle; Class Editor, Pat Chappellear.

REINHARDT HILTONIAN

"Voice of Georgia's Oldest Coeducational Junior College"

The Reinhardt Hiltonian, Waleska, Ga.

Sept. - Oct. - Nov

Hiltonian Staff Lois Tatum Editor

Lois Tatum, of
was recently cho
Chief of the co
Hiltonian. The s
of twelve studen
lected by Miss
faculty sponsor.

Lois, a popula
ident of the Pi
president of Stu
member of the P
Society, Glee Clu
Conference. She
on the '49-'50 Hi

Barbara Bisho
tor, is a junior
a graduate of Car
Barbara, who is
rector of publicit
plans to study
make newspaper

Also, hailing fr
da Doss, a senio
Managing Editor.
The other mem
include:

Alvin Earwood
Tommy Quinton a
news editors; E
Ronald Morris, circulation mana
gers; and Miss Grace Hadaway,
faculty sponsor.

The reporters are Grace Wehunt,
Mary Sue Westbrook, Irene



Tommy Quinton recei
for the best dressed sir
tant. The prize for
dressed couple was

THE BLUE AND GOLD

Vol. 9, copy 9

January 30, 1952

Reinhardt Student

STAFF

Editor.....Virgil Chandler
Associate Editor.....Tommy Quinton
Typist.....Ann Langston
Dittoist.....Pat Chappelle





WE PLAY



CHOCTAWS



LINEUP

Shirley Wilson
 June Nelson
 Edna Lovelace
 Jeanne White
 Reba Addison
 Sarah Helton
 Anne Moss
 Betty June England
 Fanny Lou Gordon

Big Chief.....Edna Lovelace
Little Chief.....June Nelson
CoachSyrol McLain



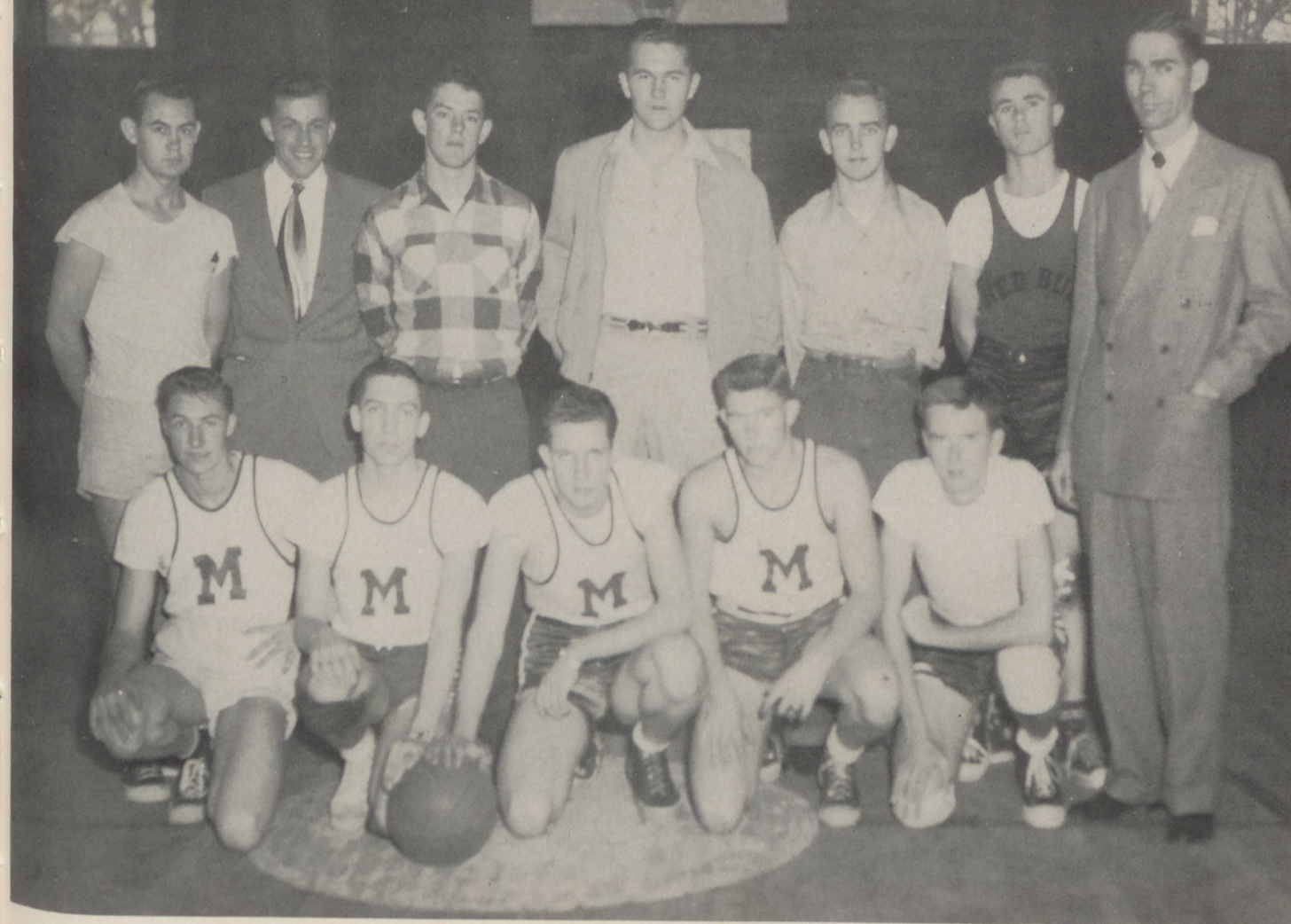
TALLULAH



LINEUP

Sara Timmons
June Cline
Pat Chapplelear
Betty Ann May
Joyce Eubanks
Betty Cline
Carolyn Vaughn
Gerry Whitfield
Lucy Wilder

Big Chief..... June Cline
Little Chief Pat Chapplelear
Coach..... John Campbell



MOHAWK



MOHAWK TEAM—

Kneeling: Jimmy Major, Ernshaw Sosebee, Syrol McLain, Roger Hopkins, Miller Davis.

Standing: Alvin Earwood, Edward Deen, Charles Newbern, Bobby Holcombe, Jerry Brooks, Richard Blackstock.

Not shown: Edwin Oldham.

Big Chief.....Ernshaw Sosebee
Little Chief.....Syrol McLain
Coach.....Reynolds W. Greene



SEMINOLE

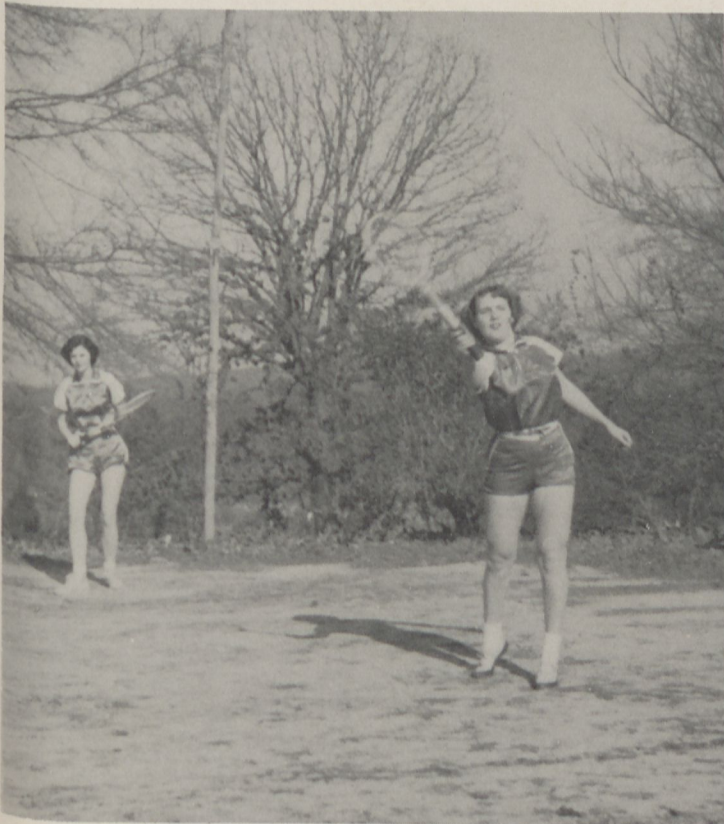


SEMINOLE TEAM—

Kneeling: Frank Poole, Bobby Tillendar, Ernest Moore, Robert Whittemore, Otis Smith, Donald Hanberry.
 Standing: Ted Phillips, Jarnette Wigington, Richard Barnes, Charles Mobley, James Stephens, Luis Pineda, Jimmy Johnson, John Anderson, Travis Woodward.

Big Chief.....Ernest Moore
Little Chief.....Robert Whittemore
Coach.....John Campbell

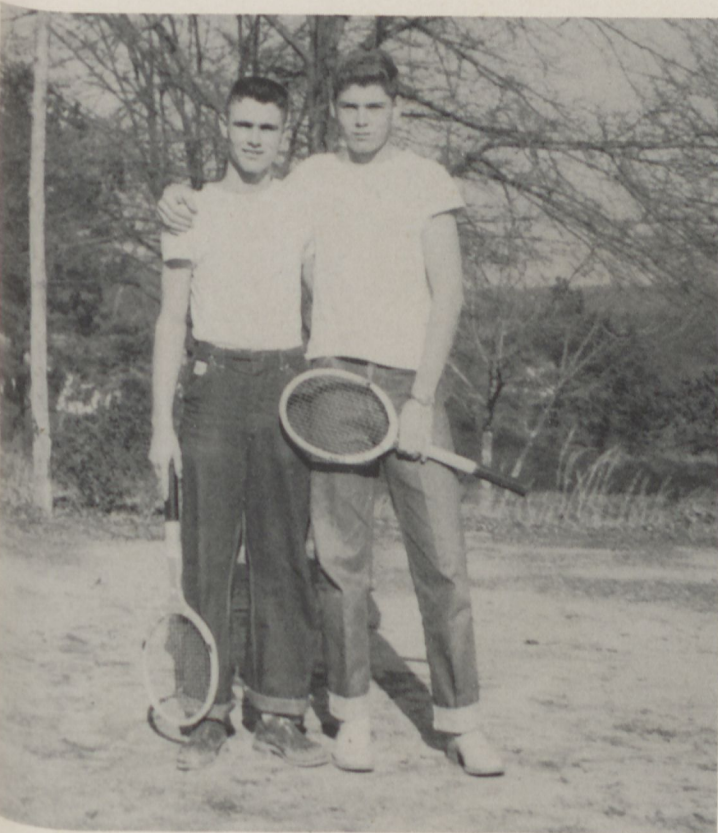
TENNIS



TALLULAHS
Sara Timmons Pat Chapplelear



CHOCTAWS
Jeanne White Edna Lovelace



SEMINOLES
Donald Hanberry Robert Whittemore



MOHAWKS
Richard Blackstock Edwin Oldham





AND WE ARE SOCIAL



DEBATE SPEAKERS

Reba Addison
Beulah Grace Cline
Jeanne Parris



MASCOT

Nancy Greene

PHI ALPHA LITERARY SOCIETY

To the Stars through Bolts and Bars





DEBATE SPEAKERS

Lois Tatum
Sara Timmons
Pat Chapplelear



MASCOT

Barry Stone

PHI DELTA LITERARY SOCIETY

True, Faithful, and Sincere





DEBATE SPEAKERS

Ronald Morris

Ernest Moore

Robert Whittemore

Rueben Wilson



Miss Haygood

Jeanne White

HAYGOOD LITERARY SOCIETY

In God We Trust



OFFICERS

President.....Tommy Quinton

Vice President.....Ernest Moore

Secretary-Treasurer.....Walt Pendley

Chaplain.....Travis Woodward

SPONSORS

Mr. John Campbell

Mr. Dan Wages



DEBATE SPEAKERS

Virgil Chandler
Otis Smith

Edward Deen
Richard Manus



Miss Pierce
Edna Lovelace

PIERCE LITERARY SOCIETY

*We have no trouble with difficulties,
but difficulties have trouble with us.*



OFFICERS

President.....Virgil Chandler
Vice President.....Otis Smith
Secretary-Treasurer.....Billy Braswell
Chaplain.....William Hillhouse

SPONSOR

Mr. H. S. Hanson

HONORARY SOCIETIES



SPONSOR
Miss Christina Timmons



BETA CLUB—HIGH SCHOOL



PI EPSILON—COLLEGE

FUTURE TEACHERS of AMERICA

EDWARD L. THORNDIKE CHAPTER



Seated, left to right: Ann Starr, Grace Wehunt, Yeteva Bennett, Betty Pittman, Marion A. Powell, Fannie Lou Gordon, Edna Lovelace, Shirley Wilson.
Standing: Betty Cagle, Ernshaw Sosebee, Alvin Earwood, Tom Quinton, Walt Pendley, Carolyn Free, Christine Cantrell, Betty Hulsey.

EDUCATION CLASS





Wittiest

JACK HESTER
MALLENE COX

Best All Around

VIRGIL CHANDLER
BETTY CAGLE





Most Likely to Succeed

LOIS TATUM
TRAVIS WOODWARD



Best Dressed

LINDA DOSS
EARNSHAW SOSEBEE

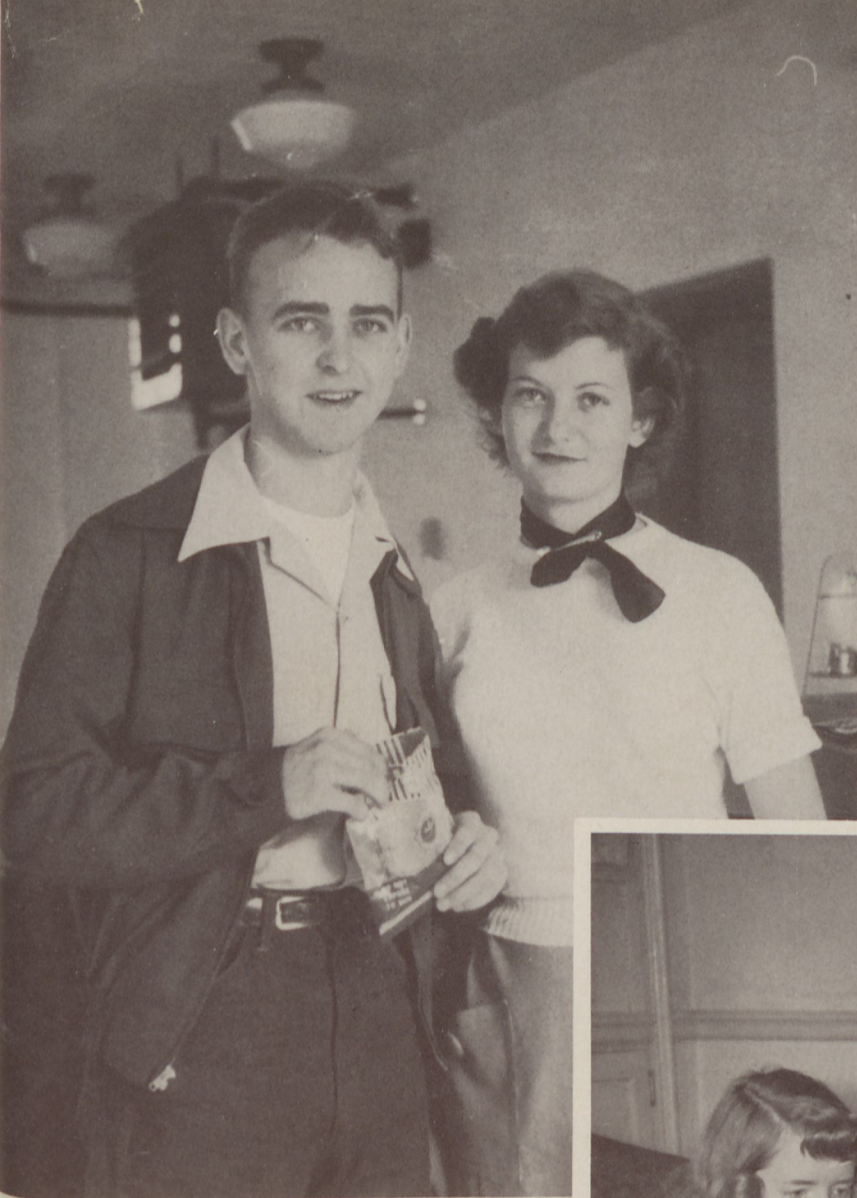


Most Handsome
JARNETT WIGINGTON

Most Beautiful
JEANNE PARRIS



Most Talented
ERNEST MOORE
MALLENE COX



Cutest

JERRY BROOKS
JO YARBOROUGH

Most Popular

EDNA LOVELACE
JARNETT WIGINGTON





Most Studious

TRAVIS WOODWARD
BETTY CAGLE

Most Friendly

TOMMY QUINTON
JEANNE PARRIS

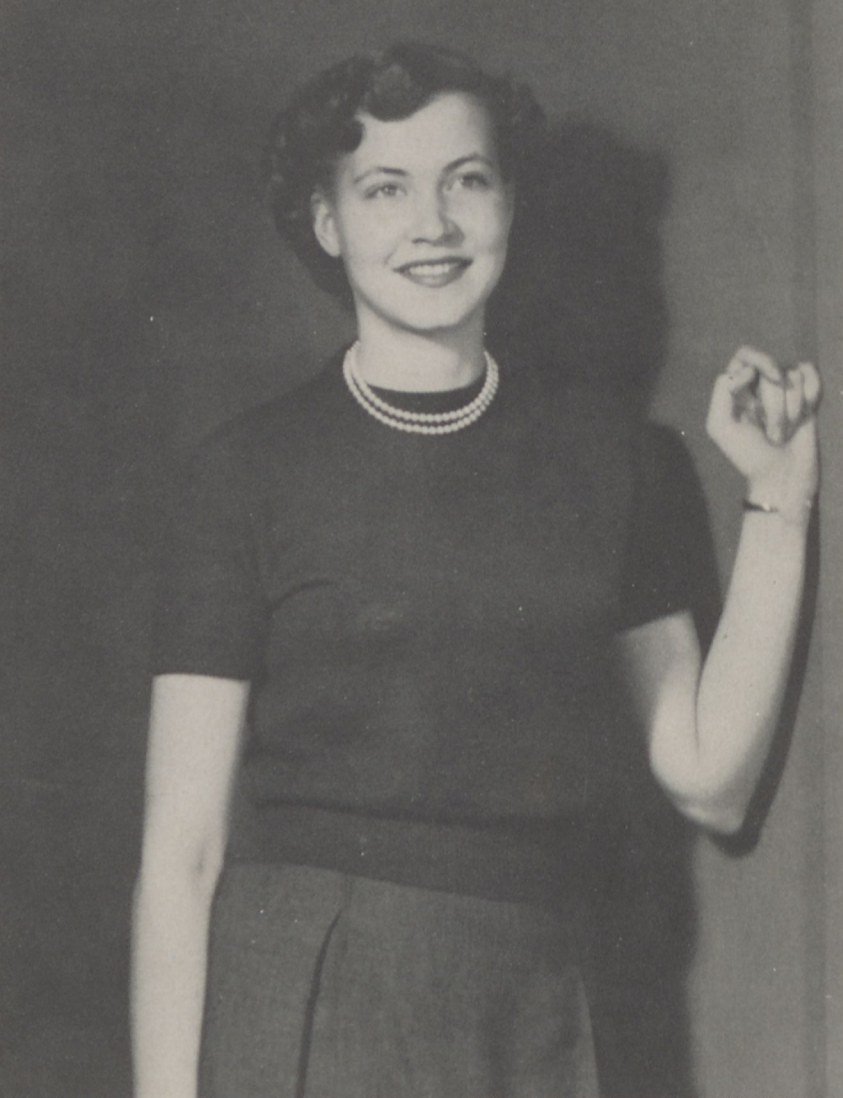




Most Intellectual
 VIRGIL CHANDLER
 GRACE WEHUNT



Most Athletic
 EDNA LOVELACE
 ERNSHAW SOSEBEE



Miss Smile

JEANNE PARRIS

Elected by the student body to reign during the annual Smile Day February 15.

Miss Pierce

EDNA LOVELACE

Miss Reinhardt

PATRICIA CHAPPELEAR

Miss Haygood

JEANNE WHITE





Miss Reinhardt
PAT CHAPPELEAR



BEAUTIES



JEANNE PARRIS



SARAH HELTON



CAROLYN VAUGHN



JOYCE DOBSON



Sara Hardin
May Queen
Mary Ann Moore
Maid of Honor

Children representing other countries.



The May Queen and her court.



Joyce
Dobson
*Halloween
Queen*



HALLOWEEN PARTY



PINE LOG MOUNTAIN DAY





PI EPSILON BANQUET—*Sweetheart*
Held at Dixie Inn on February 14





JARNETT WIGINGTON
ANN MOSS
*King and Queen of
Hearts*



HILL FREEMAN MEMORIAL LIBRARY



LIBRARY STAFF

Carolyn Free
Lois Fossett
Miss Timmons
Sara Timmons
Jo Yarbrough
Edna Lovelace

















JUNIOR-SENIOR
BANQUET
May of 1951

DINING HALL SCENES





MOVING DAY

The books were moved from the old library into the new building by the students.

Morning devotion in the new chapel.





OUR ADVERTISERS

Are our friends and the friends of Reinhardt College. They make possible the publication of this annual. Wherever and whenever possible show your appreciation by patronizing them!



Richard Manus and Robert Whittmore know that Denim is best for the job.

Canton DENIM

Manufacturers for Over 50 Years

Edna Lovelace appreciates Denim at work or play.

TURNER HALSEY
Company

40 WORTH ST. NEW YORK, N.Y.

Agents for
TURNER JONES
Company, Inc.



COMPLIMENTS OF
**J & C Bedstead
Company**

ELLIJAY

GEORGIA

LAWSON MOTOR CO.

Chevrolet Sales & Service

JASPER

GEORGIA

Wrecker Service

ALLRED-WHITE DRUG CO.

The Rexall Store

Prescriptions—Druggists

TATE

GEORGIA

Dean & Ross Builders

HARDWARE — ELECTRICAL

APPLIANCES

Cartersville, Georgia

Phone 72

**MOORE TRUCK & TRACTOR
CO.**

International Trucks
Farmall Tractors
McCormick Deering
Farm Machinery
Pontiac Automobile
Sales & Service

JASPER

GEORGIA

Andy's Jewelry

Blue Ridge — Ellijay

HAMILTON — ELGIN — BULOVA
WATCHES

KEEPSAKE — MEMOREE — LANE
DIAMONDS

WATCH and JEWELRY REPAIR

ATCO MERCANTILE CO.

Department Store

Owned and Operated
by

S. R. BRADFORD & SONS

Atco, Georgia

Compliments of

Henslee's

DEPARTMENT STORE

Calhoun, Georgia

Compliments of
JASPER FEED STORE
Master-Mix Feeds

JASPER

GEORGIA

BEST WISHES
Calhoun Hardware
Calhoun, Georgia

Compliments of
**The Bank
of
Ellijay**

Member of the Federal
Deposit Insurance
Corporation



ELLIJAY

GEORGIA

Compliments of
**SMITH GIN
Company**
COTTON SEED & PRODUCTS
JOHN DEERE
FARM EQUIPMENT
Cartersville, Georgia

●
Best Wishes
MOORE HARDWARE
Jasper Georgia

●
**BARTOW TRUCK &
IMPLEMENT COMPANY**
Cartersville Georgia

Worlick Inc.

"Fine Furniture"

CARTERSVILLE GEORGIA

Compliments of
CITIZENS BANK

of
Ball Ground, Georgia

Compliments of
PEOPLES LOAN AND
FINANCE CORPORATION

Cartersville Georgia

ROYAL CROWN BOTTLING
COMPANY



Jasper

Georgia

Compliments of
**JASPER BANKING
COMPANY**



Jasper, Georgia

Compliments of
JASPER CLEANERS

DILLARD PETTIT

Jasper

Georgia

Ellijay
MOTOR COMPANY
Chrysler - Plymouth - Dodge
ELLIJAY GEORGIA

**W. P.
Stephen's
Lumber
Company**

"Stephen's Quality is your Best
Assurance of Economy"

MARIETTA

GEORGIA



**"Your Friend"
LAWERENCE COBB**



26 Years Trying to Make
This the Best Furniture Store
in Atlanta



271 - 273 MARIETTA STREET
Atlanta, Georgia

SCHILLINGS HARDWARE
Marietta, Georgia

CANTON HARDWARE CO.
Canton, Georgia

GREEN LUMBER COMPANY
Canton, Georgia

COMPLIMENTS OF
**Southern Butane
Gas Company**

CANTON

GEORGIA



Compliments of

**Cobb
EXCHANGE BANK**

MARIETTA

GEORGIA

**BEAVER FURNITURE
COMPANY**

302 MARIETTA STREET

"We Work Like Beavers
to Please You."

ATLANTA

GEORGIA

Compliments of

Reynolds

and

Sparks

FORD CARS and TRUCKS

DEARBORN IMPLEMENTS

Canton

Georgia

B and T

FEED COMPANY

Canton

Georgia

MEMORIALS OF
GEORGIA MARBLE
AND GRANITE



EVERY MONUMENT
GUARANTEED BOTH
AS TO QUALITY
AND WORKMANSHIP



**CONSUMERS'
MONUMENT
COMPANY**

Ball Ground, Ga.

Compliments of

Etowah

Bank

WE APPRECIATE
YOUR BUSINESS

Member of Federal

Deposit Insurance Corporation

CANTON

GEORGIA

BANK OF CANTON

CANTON, GEORGIA

Serving Cherokee and Surrounding Territory

for More Than 59 Years

MEMBER OF FEDERAL DEPOSIT INSURANCE CORPORATION

Best Wishes to All
STUDENTS AT REINHARDT
COLLEGE

Canton Creamery

Waleska Road

CANTON

GEORGIA

Compliments of
BANK OF WOODSTOCK

Member of F.D.I.C.

Deposits Insured up to

\$10,000

WOODSTOCK

GEORGIA

CHEROKEE FARMERS
CO-OP, INC.

Clay Owens, Mgr.

CANTON

GEORGIA

Compliments of

**GEORGIA GOLD
PRODUCTS**

CARTERSVILLE

GEORGIA

COMPLIMENTS OF
**Canton Jewelry
Company**

"Repairing A Specialty"
The Most Precious Gift
is Jewelry

CANTON

GEORGIA

Compliments of

DIXIE INN

"Quantity of Quality
in Fine Food"

WOODSTOCK

GEORGIA

CHEROKEE
DRUG COMPANY

CANTON

GEORGIA

COMPLIMENTS OF

Saul's

DEPARTMENT STORE

Marietta

Georgia

COMPLIMENTS OF
Morgan Brothers

General Electric Appliances

Canton

Georgia

**J. H. JOHNSON
COMPANY**

General Merchants

WOODSTOCK

GEORGIA

KESSLER'S
"Pay Cash — Pay Less"



YOUR DOLLAR BUYS MORE AT
Kessler's Store

CANTON

GEORGIA

Compliments

of

STANDARD OIL COMPANY

ERNEST STONE, Agent

Canton

Georgia

■■■■ JONES MERCANTILE COMPANY ■■■■
Seventy Years and More at Canton



DEPARTMENT STORE

MERCHANDISE

COTTON AND FERTILIZER



Canton

Cartersville

North Canton

Canton, Georgia

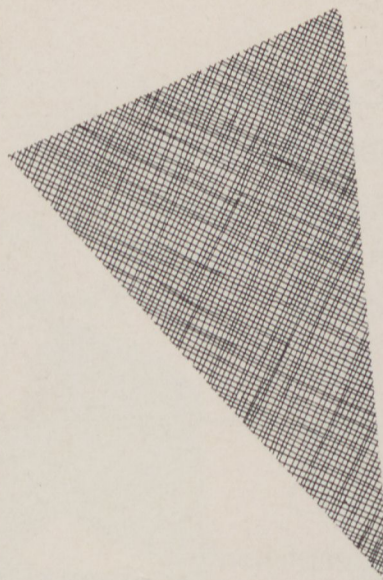
COMPLIMENTS OF

McClure

BOOK STORE

Canton

Georgia



DONLEY'S

Department Store

CANTON

GEORGIA

COMPLIMENTS OF

**MODEL
CLEANERS**

Canton, Georgia

Compliments
B. N. AUTO PARTS COMPANY
Auto Parts and Accessories
PHONES 411—511
Canton, Georgia

Compliments of
DIXIE CLEANERS
and Shirt Laundry
1411 ROSWELL STREET
Marietta Georgia



Compliments of
The Canton Theater
and
M. T. Drive-In
CANTON GEORGIA

Compliments of
WESTERN AUTO ASSOCIATE
STORE
Canton, Georgia

CANTON DRUG COMPANY
The Rexall Store
PRESCRIPTION DRUGGIST
SCHOOL SUPPLIES, CANDIES
AND SODA FOUNT
Phone 299
Canton Georgia

Save With Safety

Current Dividend Rate 3% Per Annum, Payable January 1
and July 1

Savings Insured Up to \$10,000—Inquiries by Mail Solicited

A. D. Little, President
P. B. LATIMER, Vice President
WM. D. LITTLE, Sec.-Treas.

J. GUY ROBERTS, Attorney
JORDAN GARDNER, Attorney
ROSSER N. LITTLE, Attorney



MARIETTA FEDERAL SAVINGS & LOAN ASSOCIATION

Phone 2742

112 Atlanta Street

Marietta, Georgia



Refresh

The
Marietta
Coca-Cola
Bottling
Company

MARIETTA, GEORGIA

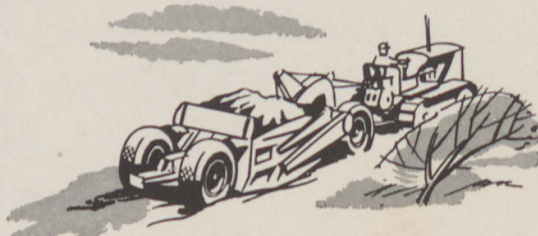
Compliments of
**SEARS
ROEBUCK
and
COMPANY**

Marietta



Georgia

In road building
or defense work,
You can count on
big yellow tractors
by "Caterpillar."



YANCEY BROS. CO.

1540 NORTHSIDE DR., N.W. • ATLANTA

1781 FIFTEENTH STREET • AUGUSTA

THE V SERVICE STATION
SHELL PRODUCTS
GOODYEAR AND ARMSTRONG TIRES
NIGHT AND DAY SERVICE
Box 287 Phone 582

CANTON MOTOR SALES

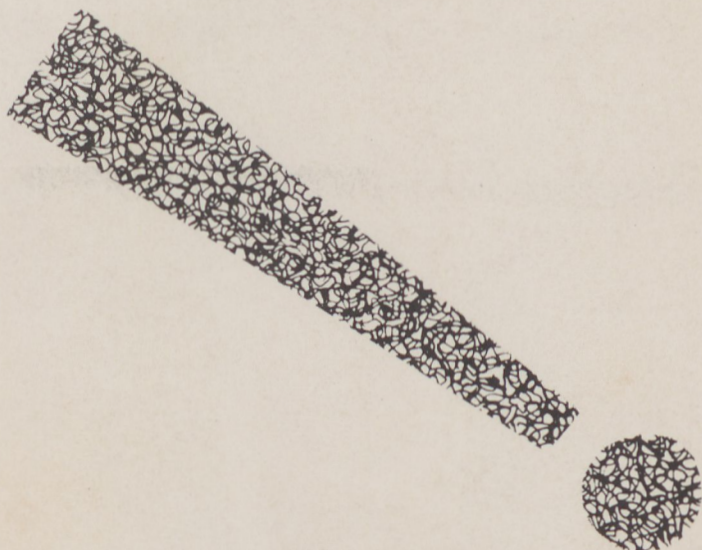


Phone 470 — 408J Night

24 HOUR WRECKER SERVICE

COMPLIMENTS OF
Rome Paper Company
ROME GEORGIA

Compliments of
MAIN STREET GARAGE INC.
Your Chevrolet and Buick
Dealer
Canton, Georgia



HODGE MINING COMPANY

Cartersville, Georgia

JOHN W. HODGE



AUTOGRAPHS







