

*Cherokee Phoenix '54*



THE CHEROKEE

PHOENIX

OF  
1954



*Published by the*  
STUDENT STAFF  
of

REINHARDT JUNIOR COLLEGE

WALESKA, GEORGIA





## *Dedication*

To Professor H. Stanley Hanson, a master teacher, whose scholarship and interest in his students, whose loyalty to Reinhardt, and whose untiring efforts have given us a greater thirst for knowledge and a desire to be better men and women, we gratefully dedicate the 1954 edition of the Cherokee Phoenix.

THE STAFF







## *The Cherokee Phoenix Staff*

Left to right: Barbara Kilpatrik, Art Editor; Levantia Cox, Social Editor; Jerry Perry, Editor-in-Chief; Wayne Lifsey, Class Editor; Jean Hames, Girls' Sports Editor; Frank Croker, Boys' Sports Editor. Standing, left to right: Jo Ann Philips, Assistant Business Manager; Mary Davis, Business Manager; Peggy Kay, Assistant Editor.



MISS CHRISTINA TIMMONS  
*Sponsor*

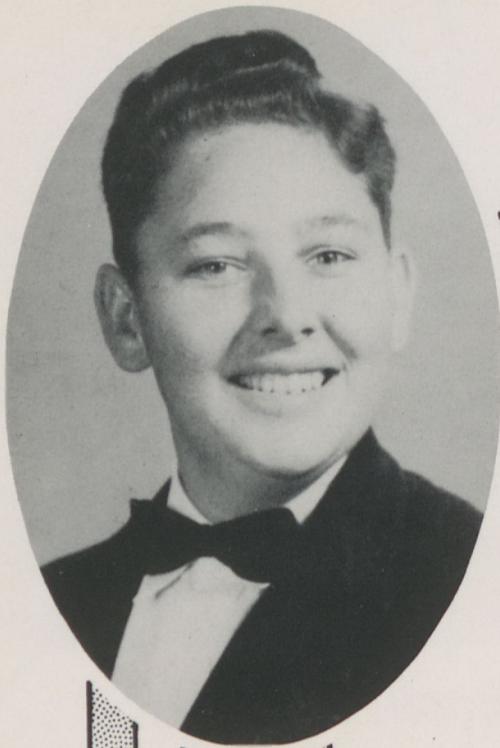


MARY CAROL BRANHAM  
*Staff Mascot*



Members of the Staff get ad from Coca-Cola.





## *Foreword---*

The sound of happy voices, the spirit of good sports, the molding of ideals and aspirations—all blend into our school experiences.

With sincere hopes of bringing a worthy souvenir of these significant days at Reinhardt to its many loyal students, the Staff has devoted many hours of work.

We feel that your satisfaction with this volume is our compensation and with this thought the Staff presents the 1954 CHEROKEE PHOENIX.



*Administration  
Building*

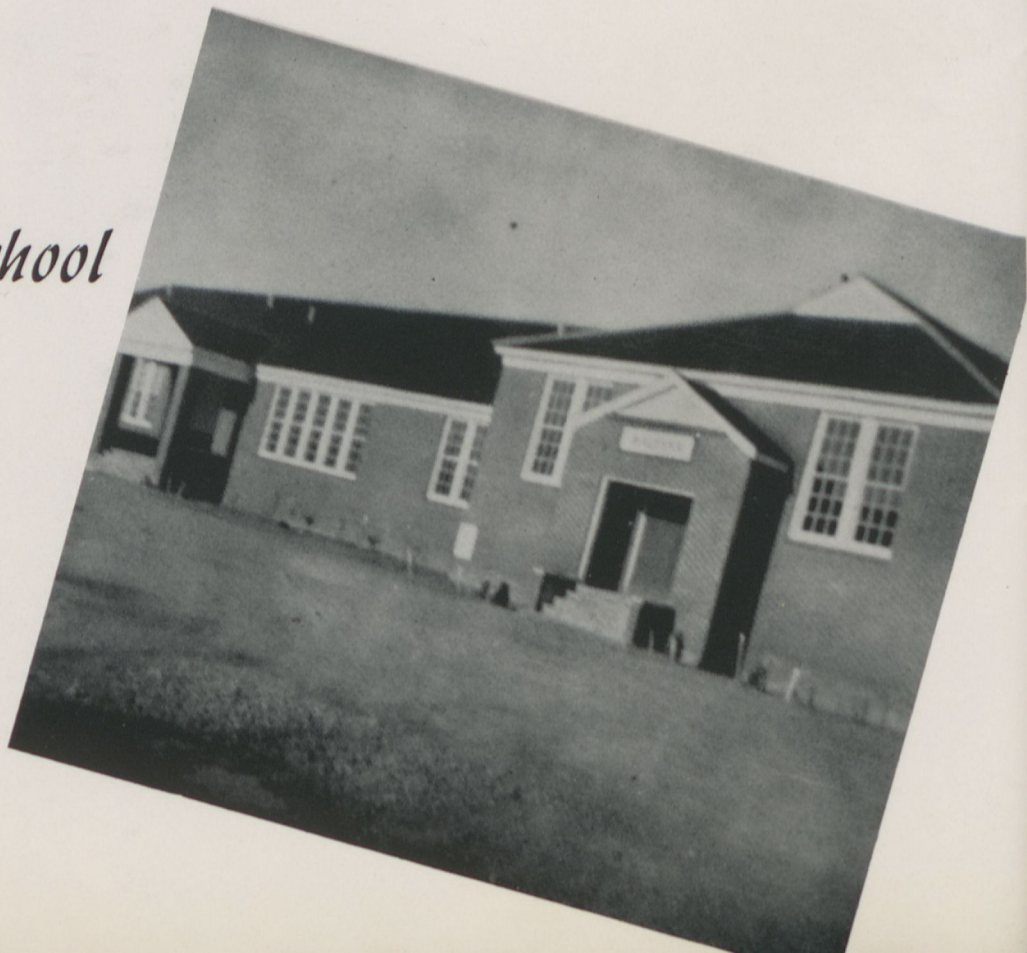




*Dobbs Building*



*Elementary School*





*President's Home*



*Pastor's Home*

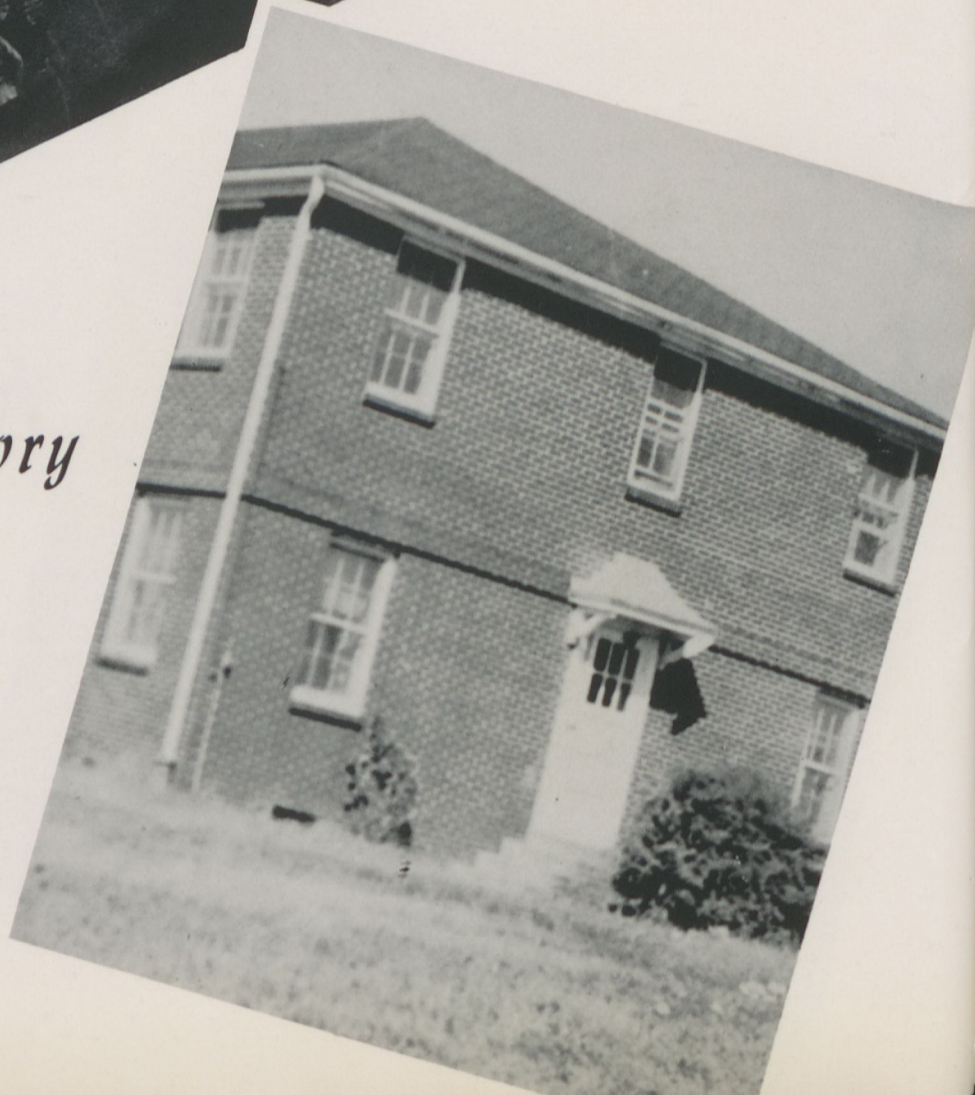




*Girls' Dormitory*



*Boys' Dormitory*

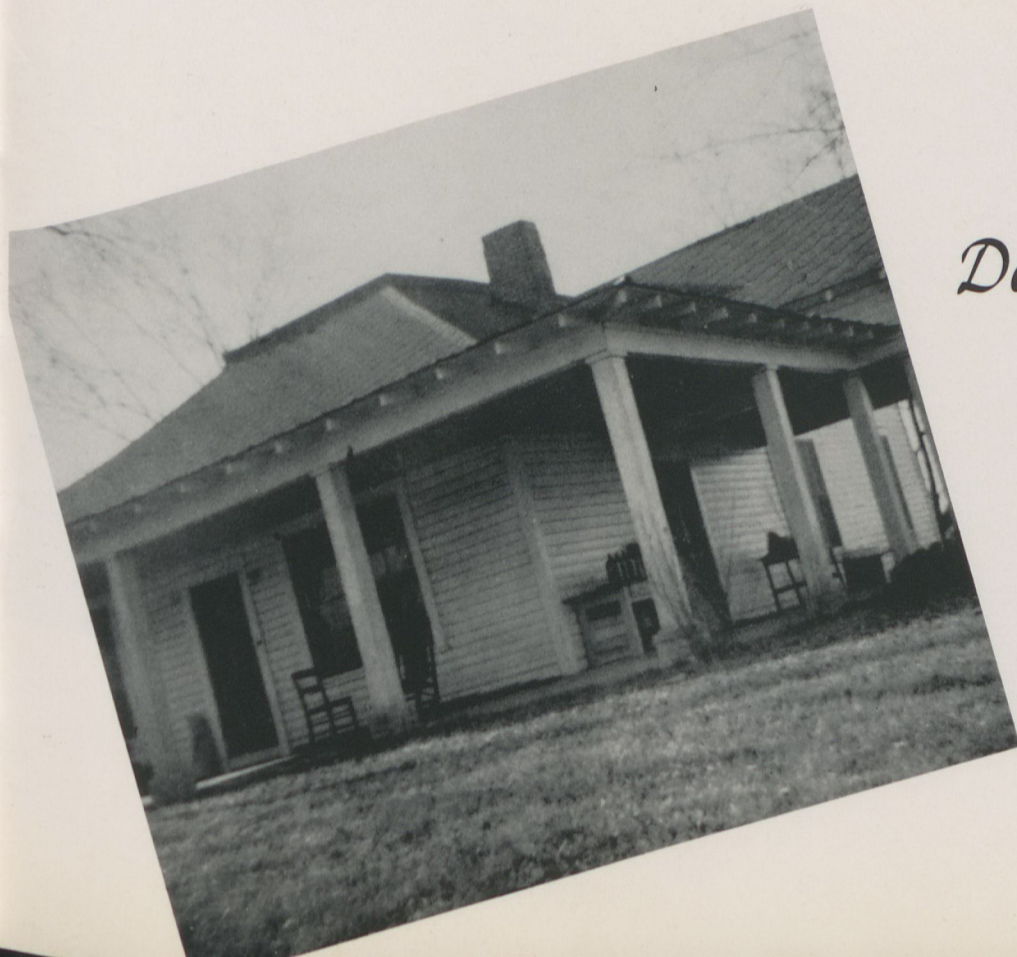




*Knox House*



*Dobbs Cottage*







*Dairy*



*Barn*





*Gymnasium*



*Athletic Field*



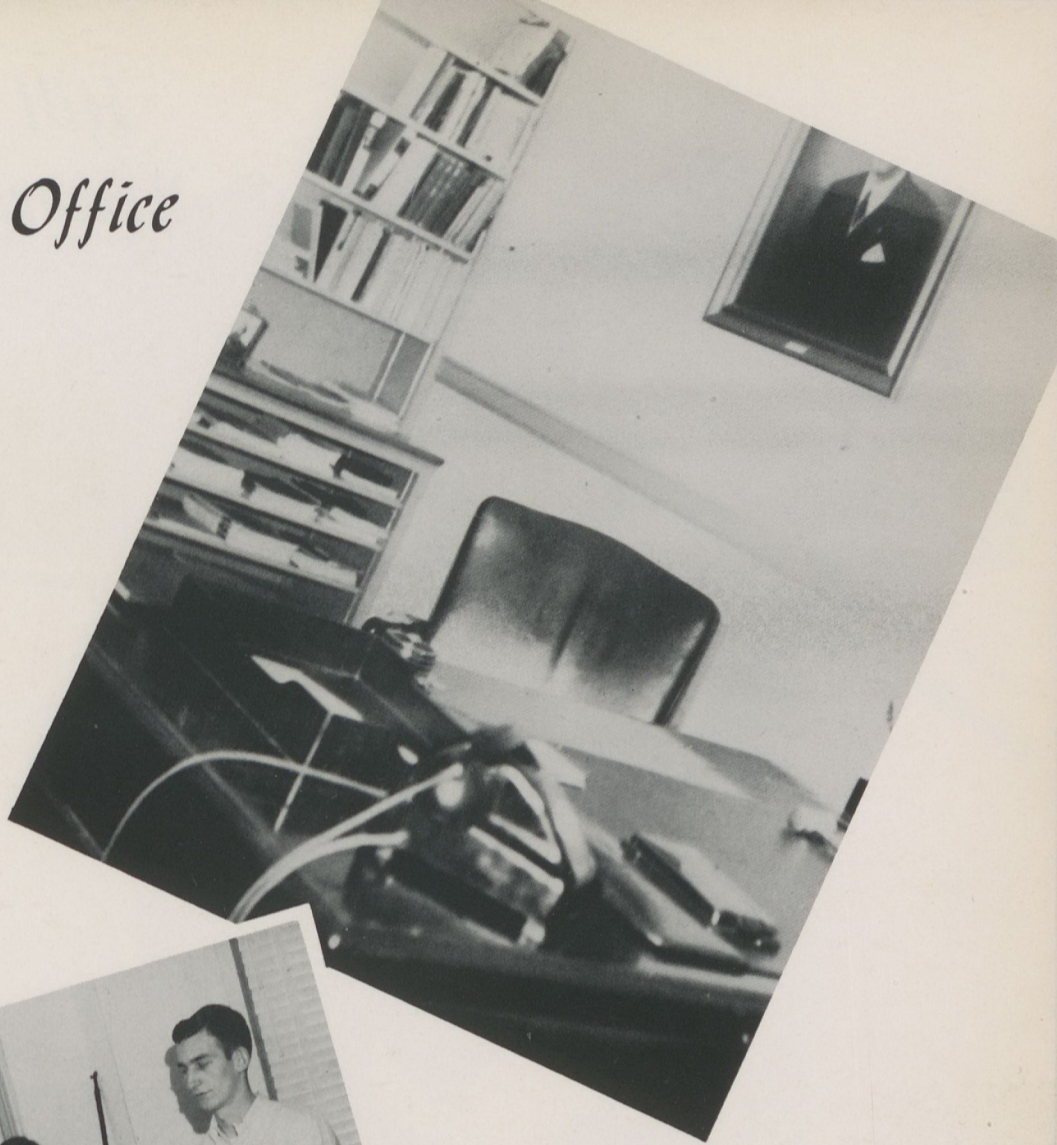
*Home of the Clines*



*Home of the Dixons*



## *President's Office*



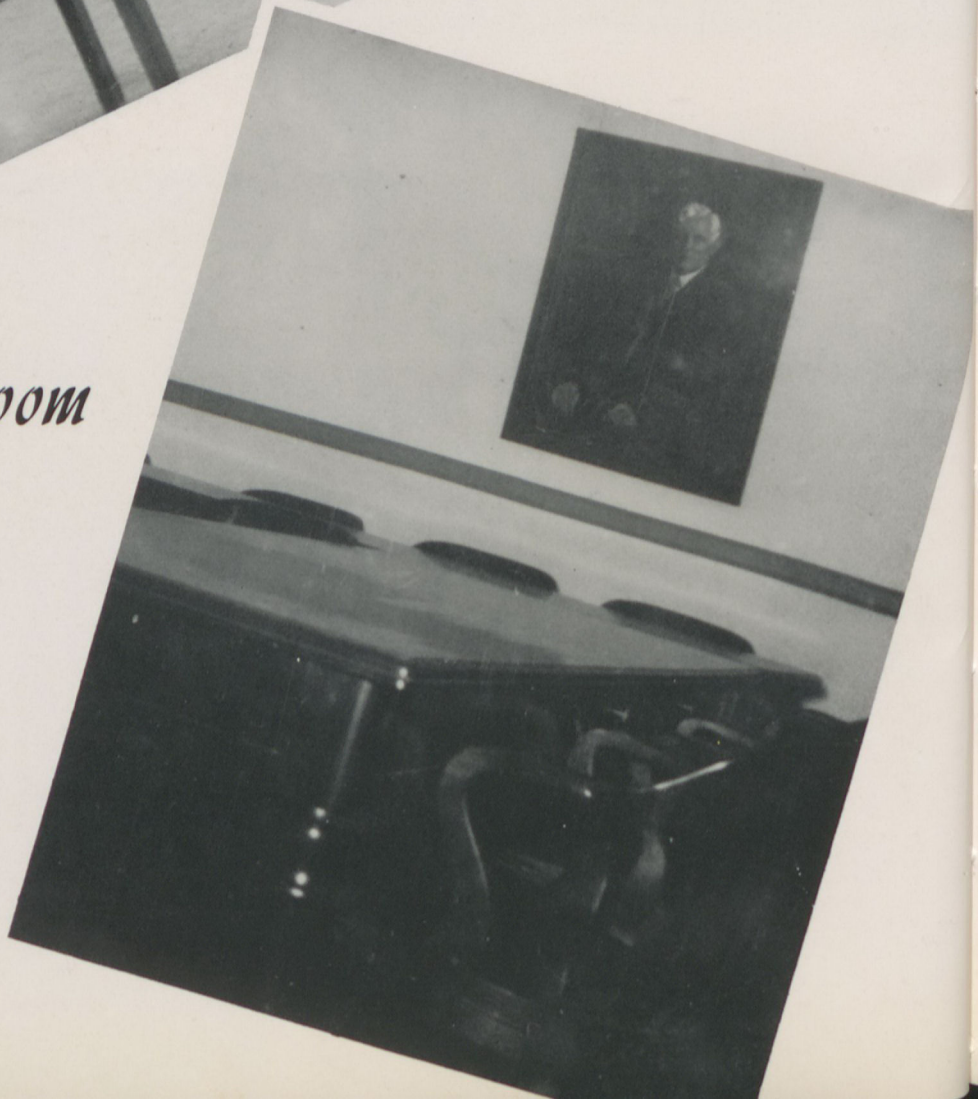
## *Registrar's Office*



*Hill Freeman  
Memorial Library*



*Friendship Room*







# **ADMINISTRATION AND FACULTY**





J. R. BURGESS, JR.  
*President*

DOCTOR MAX DIXON  
*Dean*



DECORA ADAMS  
*Dean of Women*





MR. CARL TARPLEY  
A.B., M.Ed.  
*High School Principal*  
A.B., Piedmont College; M.Ed., University of Georgia.



DR. MAX DIXON  
B.A., M.A., Emory; Ph.D., Peabody College.



LEE BRANHAM  
A.B., B.D.  
A.B., Asbury College; B.D., Emory University.





MISS DECORA ADAMS

Literature; A.B., Georgia State Teachers College; M.A., University of Georgia.



MISS RUTH MILLER

A.B., Education, Florida State University; M.A., Peabody College; Graduate work, Columbia University



MISS VIRGINIA SHUFORD

A.B., Lenoir Rhyme College; M.A., Appalachian State Teachers College.

CHRISTENA TIMMONS

Tenth Grade; B.S., Georgia State College for Women; Student in Library Science, University of North Carolina.



ERNEST H. JERNIGAN

Social Sciences; A.B., Stetson University; M.A., University of North Carolina.



MARTHA STALLINGS  
BURGESS

Ninth Grade; B.S., University of Georgia.







**MISS RITTER**

Librarian; B.S., Columbia College;  
M.A., University of South Carolina.



**MRS. ELOISE CLINE**

Commercial; B.A., University of  
Texas; M.A., University of Arizona.



**MRS. W. C. STONE**

Supervisor of the Student Grill.

**HIRAM STANLEY HANSON**  
Science; B.A., M.S., Emory Univer-  
sity.

**MR. WILLIAM C. STONE**  
Music; Diploma, Dickinson Junior  
College; M.M., Eastman School of  
Music of the University of Roch-  
ester.

**MISS BARBARA BURRELL**  
Secretary to the President.







MRS. T. McDANIEL  
*Girls' House Mother*



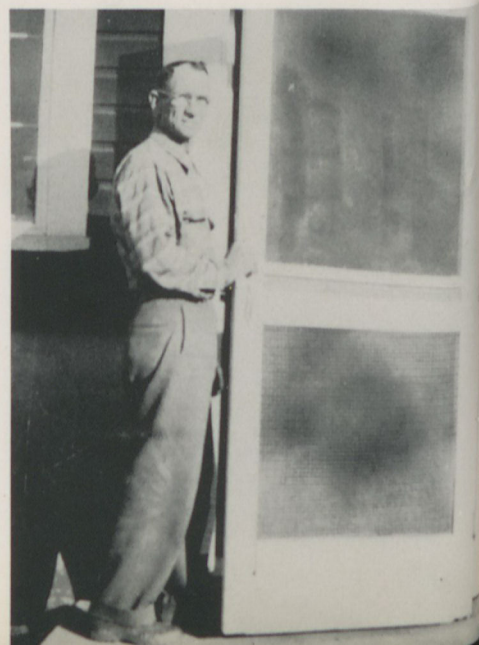
MRS. JERNIGAN  
*Boys' House Mother*



MRS. KATHRYN BROWN  
*Dietitian*



MR. CLYDE MOORE  
*Supervisor of  
Buildings and Grounds*



MR. BOND  
*Supervisor of  
Dairy and Barn*





**SENIORS**



CAROLE BUTLER

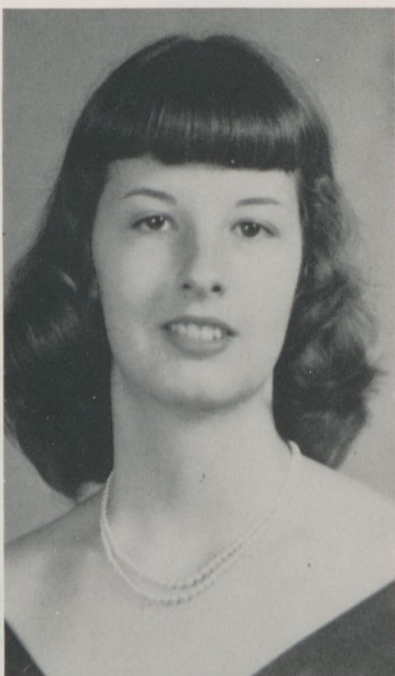
Cartersville, Georgia

Alpha; Tallulah; BSU Vice President 52-53, President 53-54; Glee Club 52-53, Sextette 53-54; Intercollegiate Debate Team 52-53, 53-54.

BETTY CHAMPION

Canton, Georgia

Alpha, Secretary Third Quarter 52-53; Tullulah; Glee Club; FTA; IRC; Assistant Feature Editor Hiltonian; Junior Class Secretary 52-53.



MARTHA CHAPMAN

Woodstock, Georgia

Alpha Vice President Second Quarter 52-53, President Third Quarter 52-53; Choctaw; Glee Club 52-53, 53-54; Student Fellowship Council First Quarter 52-53; Cherokee-Pickens sub-district Publicity Chairman 52-53, President 53-54; BLUE and GOLD, honorary member 53-54; Intercollegiate Debate Team 52-53; Hiltonian Associate Editor 52-53, Editor 53-54; Student Council; FTA 52-53, Treasurer 53-54; Student Council President Second Quarter 53-54.

SHELIA CHATFIELD

Marietta, Georgia

Alpha Treasurer 53; Choctaw Little Chief, 53-54; IRC President 53-54; Hiltonian Feature Editor 52-53 and 53-54; Blue and Gold Editor 53-54; Student Council 53-54; Pi Epsilon 52-53, Secretary 53-54; Glee Club 52-53, 53-54.

LEVI CORNELISON

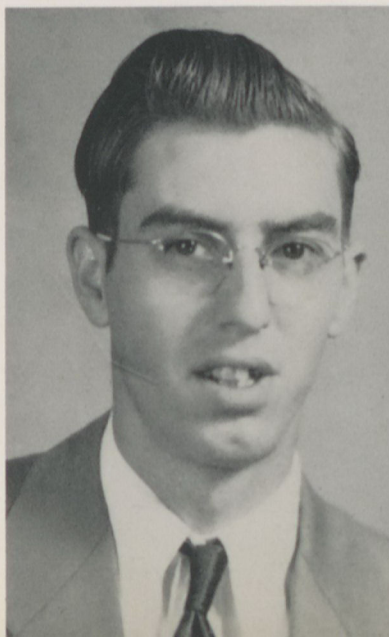
Ballground, Georgia

Haygood; Seminole.

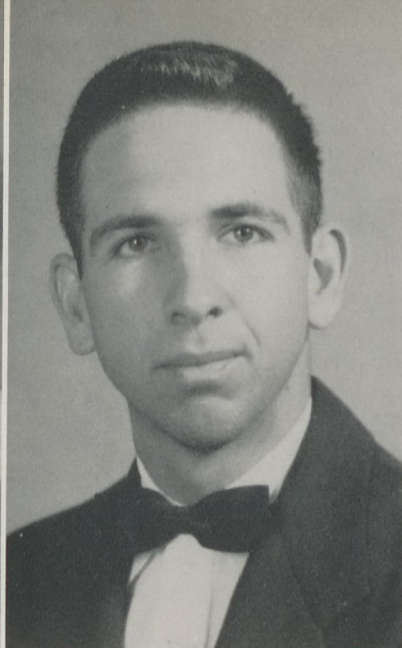
LAVANTIA COX

Kingston, Georgia

Delta Chaplain First Quarter 53-54; Tallulah; Glee Club\* Sextette 52-53, 53-54; IRC; FTA Secretary 53-54; Haygood Cheerleader 53; Social Editor of Annual Staff 53-54.







MARGIE COX  
Pine Log, Georgia  
Delta; Tallulah; FTA 52-53.

FRANKLIN CROKER  
Hiram, Georgia

Pierce Parliamentarian Third Quarter 52-53, President First Quarter 53-54; Seminole Big Chief 53-54; Pi Epsilon First Quarter 52-53; Student Fellowship Council First Quarter 53-54; Tallulah Coach 52-53; Choctaw Coach 53-54; FTA 52-53, 53-54; IRC Sergeant-at-Arms First Quarter 52-53; Sports Editor Annual Staff 53-54.

DOROTHY GLADNEY  
Aragon, Georgia

Delta Chaplain 52-53; Choctaw; FTA 52-53; Student Fellowship Council Second Quarter 52-53, Summer Council 53; IRC; Glee Club 52-53, 53-54.

JEAN HAMES  
Menlo, Georgia

Delta Vice President First Quarter 53-54; Tallulah Little Chief 53-54; Baptist Sunday School President 53-54; Annual Staff Girls' Sports Editor 53-54; Delta President Second Quarter 53-54; Student Council 53-54.



MARY HARBIN  
Canton, Georgia

Alpha Vice President First Quarter 52-53; Choctaw; Baptist Student Union 53-54; Future Teachers of America 53-54; International Relations Club 53-54; Senior Class Secretary 53-54; Hiltonian Staff Business Manager 52-53, 53-54.

MARY HARRISON  
Williamson, Georgia

Delta Vice President Second Quarter 52-53, Debater 52-53; Choctaw Big Chief 53-54; Student Fellowship Council Second Quarter 52-53, President First Quarter 53-54; Glee Club Secretary 52-53; Class Vice President 52-53, Senior Class President 53-54; Student Council 53-54; BLUE and GOLD Staff Assistant Editor 53-54; Girls' Dormitory Vice President 53-54; FTA; IRC.



BARBARA HERNDON

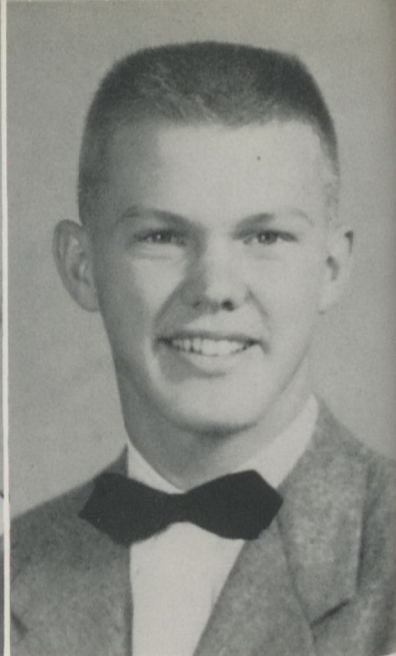
Snellville, Georgia

Delta President Third Quarter 52-53, First Quarter 53-54; Debate Speaker 53; Tallulah; Student Fellowship Council 52-53, 53-54; Glee Club Sextette; IRC; Treasurer Junior Class; Phi Epsilon Secretary Third Quarter 52-53; Sunday School President First Quarter 52-53, Vice President First Quarter 53-54; Intercollegiate Debater 53-54; Dittoist BLUE and GOLD Staff 53-54; Student Council President.

WILLIAM VINSON HILL

Rome, Georgia

Pierce Sergeant-at-Arms Second Quarter 52-53; Mohawk Big Chief 53-54; Student Council 53-54; Glee Club 53-54.



WILSON HIX

Subligna, Georgia

Haygood President Second Quarter 53-54; Mohawk Barnyard Crew President 53-54.

JUNE HOWARD

Woodstock, Georgia

Alpha; Tallulah; Glee Club 53.

JANE JOHNSON

Summerville, Georgia

Delta; Choctaw; Senior Class Treasurer.

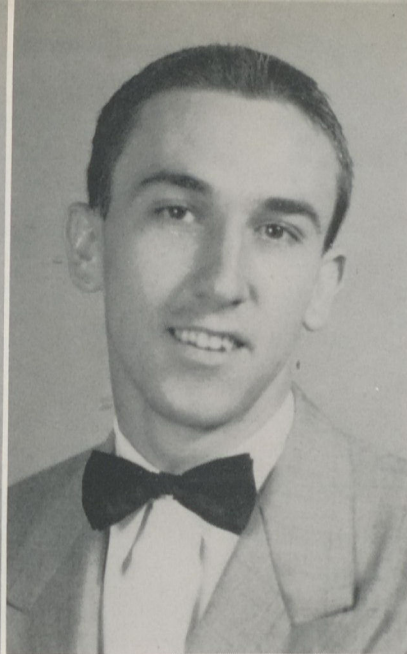
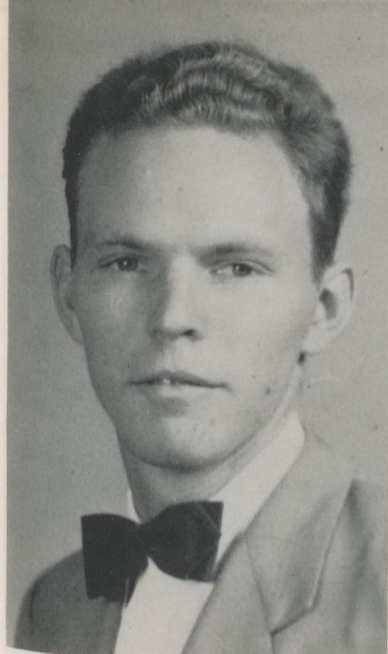
MARILYN KILGORE

Griffin, Georgia

Alpha Secretary Second Quarter 52-53; Choctaw; Glee Club; IRC; Student Fellowship Council First Quarter 52-53; Miss Pierce 53.







WAYNE LIFSEY

Griffin, Georgia

Haygood Chaplain Second Quarter 52-53, Vice President Third Quarter 52-53; Cheerleader 53, Vice President First Quarter 53-54, and Second Quarter 53-54; Seminole; Glee Club 52-53, President 53-54; Student Fellowship Council First Quarter 52-53, First Quarter 53-54; Student Council 53-54; Barnyard Crew Chaplain 52-53; Class Editor of Annual Staff 53-54; Sunday School Vice President First Quarter 52-53.

JIM LUTZ

Decatur, Georgia

Haygood; Mohawk; IRC 52-53; Cheerleader 53, Sergeant-at-Arms Second and Third Quarters 53.

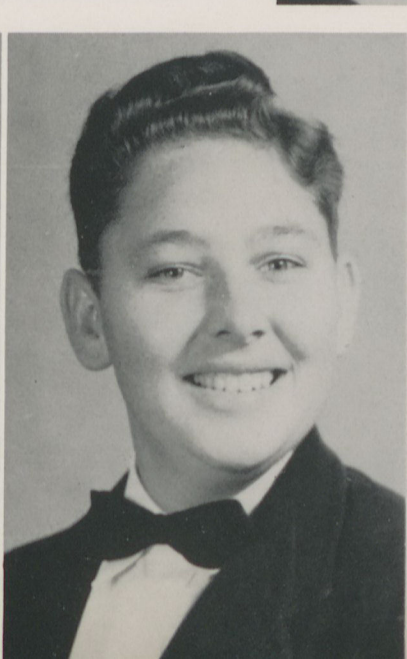
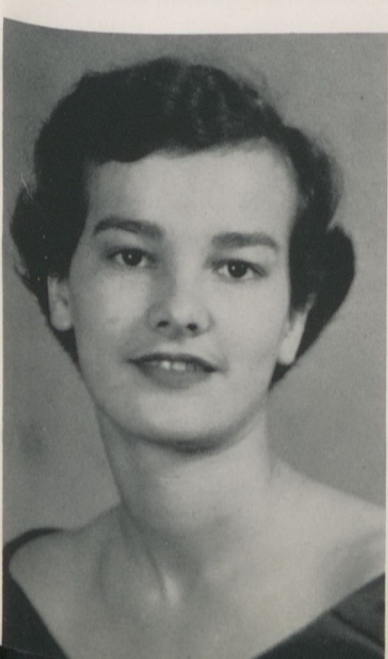
DOROTHY NALLY

Pine Log, Georgia  
Alpha; Tallulah Big Chief 53-54.

DOROTHY O'BRYANT

Austell, Georgia

Alpha Treasurer Second Quarter 52-53, Chaplain Third Quarter 52-53, Chaplain First Quarter 53-54, President Second Quarter 53-54; Choctaw Cheerleader 53-54; Glee Club; Student Fellowship Council First Quarter 52-53, Second Quarter 52-53, First Quarter 53-54; Student Council Secretary First Quarter 53-54, Second Quarter 53-54; BLUE and GOLD First Quarter 53-53; Hiltonian Assistant Circulation Manager 52-53, News Editor 53-54; Pi Epsilon President First Quarter 53-54, Second Quarter 52-53, Third Quarter 52-53.



MARTHA PAYNE

Rome, Georgia

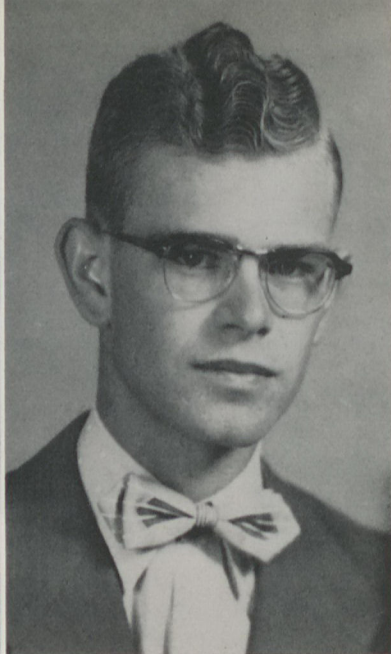
Alpha Sergeant-at-Arms Third Quarter 52-53, President First Quarter 53-54, Debater 53; Tallulah; Glee Club 53, Pianist 53-54; Student Fellowship Council Second Quarter 52-53, First Quarter 53-54; Assistant Feature Editor Hiltonian; IRC; FTA; Intercollegiate Debating Team 52-53, 53-54; Halloween Queen 52; Pi Epsilon 52-53, 53-54; Haygood Cheerleader 53.

JERRY PERRY

Rome, Georgia

Pierce Secretary-Treasurer Third Quarter 52-53, First Quarter 53-54; Cheerleader 53; Mohawks; Associate Editor Annual Staff 52-53, Editor-in-Chief 53-54; Student Council 53-54; Student Fellowship Council Third Quarter 52-53; Delta Cheerleader 53.





# CAROLYN ROQUEMORE

Forsyth, Georgia

Alpha, Secretary 53-54; Choctaw; Phi Epsilon Vice President Third Quarter 52-53, Vice President 53-54; Glee Club 52-53, 53-54, Sextette Accompanist 52-53, 53-54; FTA President 53-54; Student Fellowship Council, Pianist Second Quarter, First Quarter 53-54; IRC 52-53; Student Council 53-54.

# ED VARNER

Carnesville, Georgia

Pierce, Parliamentarian Second, Third Quarter, President Third Quarter; Assistant Business Manager Annual Staff 52-53; Sergeant-at-Arms Barnyard Crew 52-53; Secretary-Treasurer Barnyard Crew 53-54; Student Fellowship Treasurer 52-53.

TOM WARMICK  
Fairmount, Georgia

CAROL YANCEY  
Taylorsville, Georgia

Delta, Parliamentarian First Quarter 53-54 Tallulah;  
Summer Sunday School Vice President.



MISS MILLER  
Sponsor

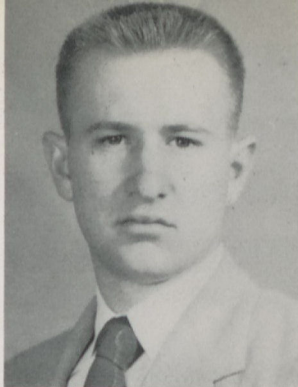




**JUNIORS**



James Anderson



Betty Moss Bailey



Dot Barnes



Betty Bently



Elaine Carter



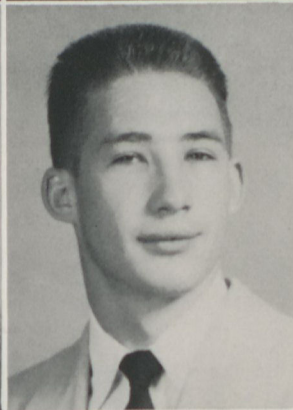
Mary Davis



Billy Dodd



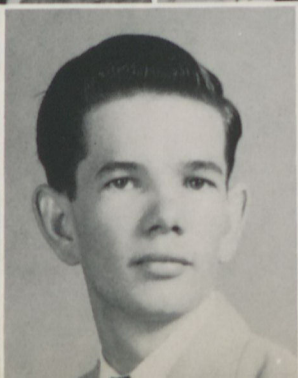
George English



Joyce  
Eubanks



Ovit  
Foster  
Barbara  
Fredrick





Jack Free



Annie Maude Greeson



Jack Henderson



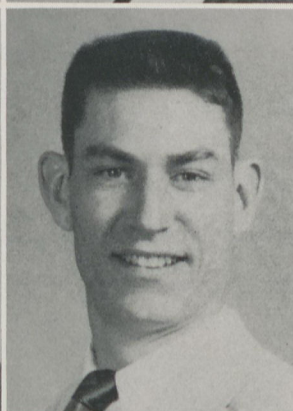
Jeannie Hood



Sybil Johnson



Bobby Jones



Peggy Lynn Kay



Barbara Kilpatrick



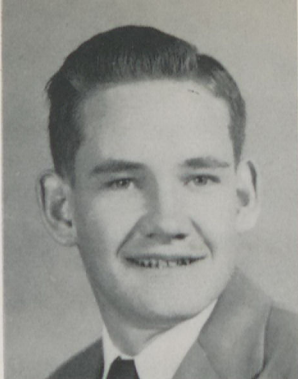
Fren  
Lovelace



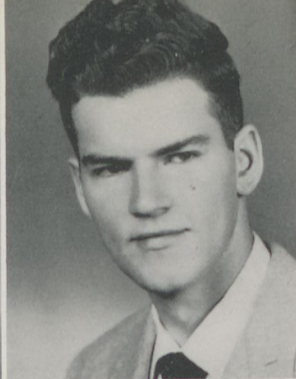
Jerry  
Maddox  
Lewis  
Mixon



Lawrence Mulkey



Bobby Payne



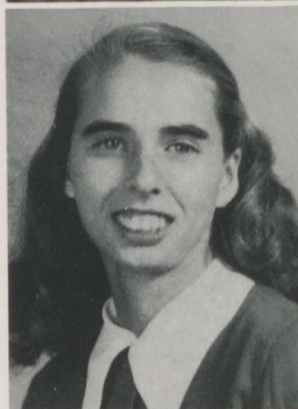
Barbara Penly



Jo Anne Phillips



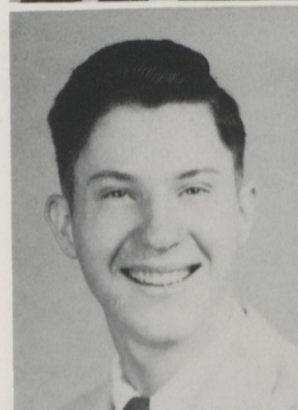
Patsy Pressley



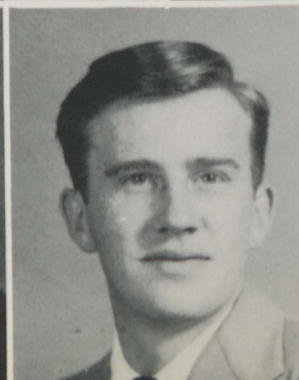
Jerry Pritchard



Eugene Tarpley



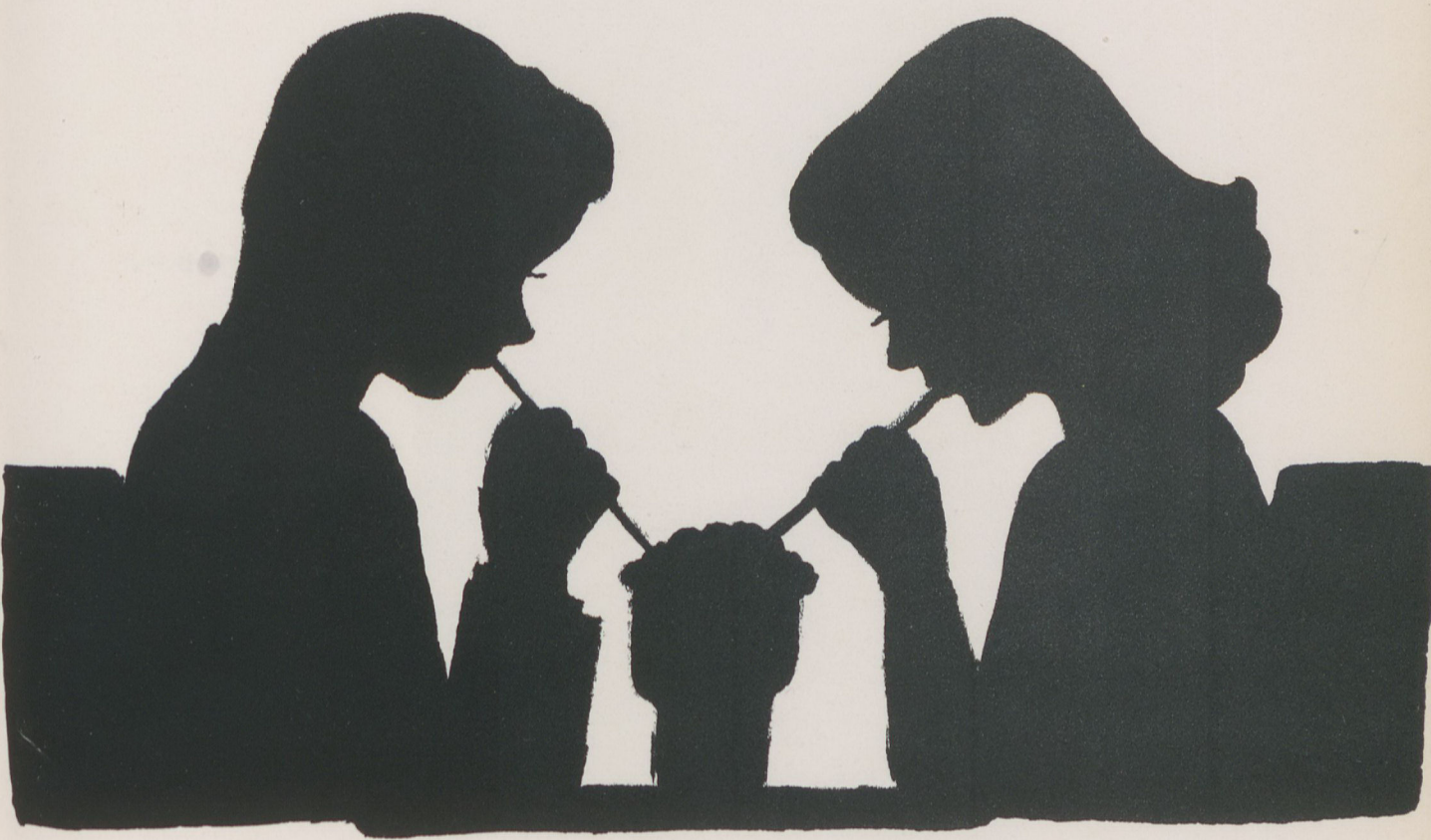
Leila Murle Teems



Frank  
Watkins

Betty  
Edwards





# SOPHOMORES



Inez Arnold



Mary Ann Barnes



Lila Baker



Margaret Ann Bennet



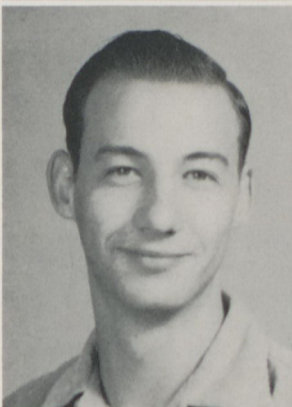
Estelle Cagle



Stella Cantrell



Jerry Dobson



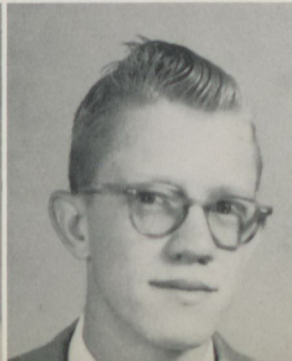
Ann Edwards



Jimmy Ellison

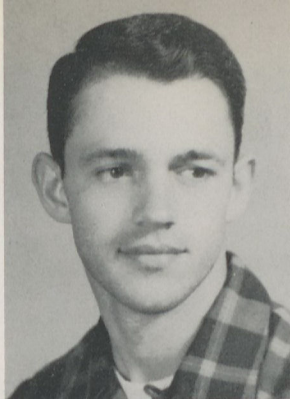


George Harrelson





H. B. Payne



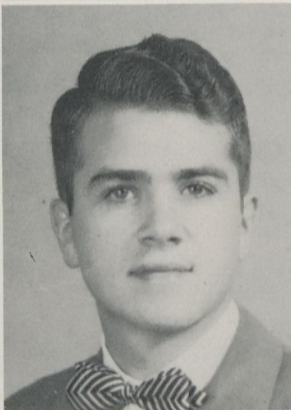
Joyce Pritchard



Margie Rutledge



Charles Teague



Patsy Williams



PICTURE  
NOT  
AVAILABLE

Barbara Henderson

Nina Savage



Ann Simms



Jan Simms



Dewey Vinson





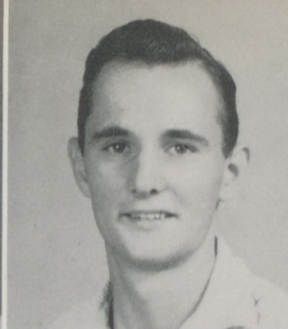




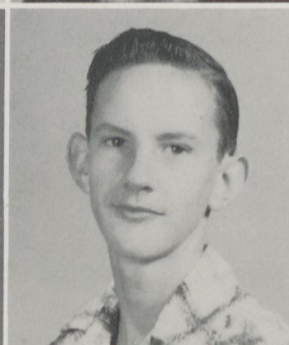
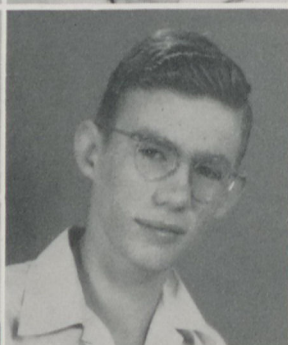


**FRESHMEN**





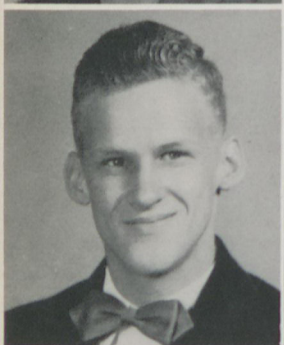
Martha Burgess  
Glenn Byers  
Betty Ann Cagle



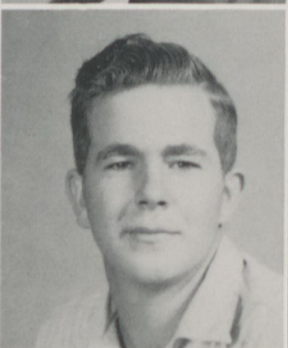
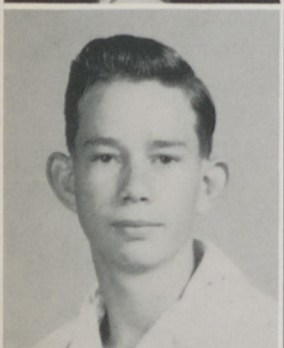
Nell Childers  
Charles Cline  
Joe Cline



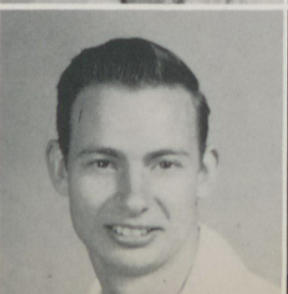
Carlos Cardova  
Elizabeth Crowe  
Geraldine Dickerson



Wayne Eubanks  
Betty Ruth Ghorley  
Dot Harrelson



James Pharr  
Luke Satterfield  
Mary Jo Thompson



Nora Mae White  
Jerry Wright  
Shirley Haney





# JUNIOR HIGH

*9<sup>th</sup> & 10<sup>th</sup> GRADES*





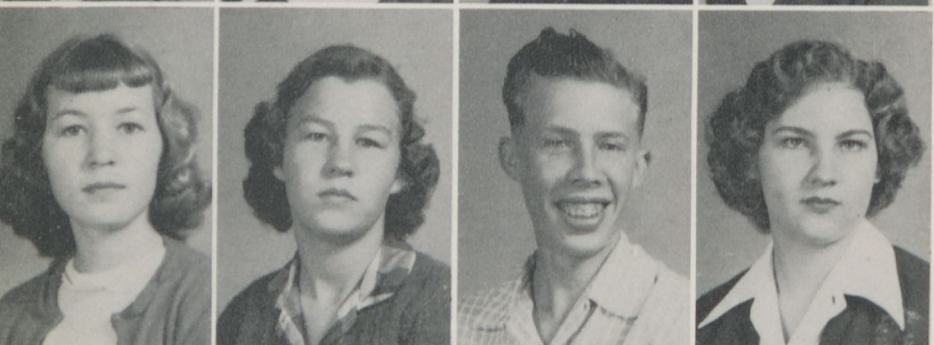
Margaret Allison  
Patsy Barnes  
Peggy Barnes  
Lamar Barton



Janice Blalock  
Betty Cline  
Frank Cline  
Sara Dickson



Jerry Durham  
Becky Howell  
Howard Hughes  
Clara Hufstettler



Shirley Jarvis  
Frances McDaris  
Jerry Lee Moody  
Betty Moore



Ruth Paris  
Shirley Roberts  
Zennie Lee Robertson  
Peggy Sue Rutledge



*Not shown:*  
H. Greene  
John Carter Jordan  
Eugene Parker  
Sue Scott  
Billy White  
Martha Worley  
Brook McCoy

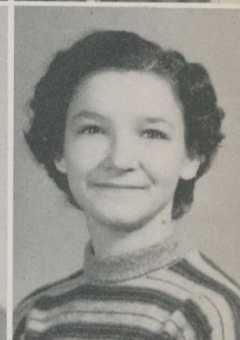
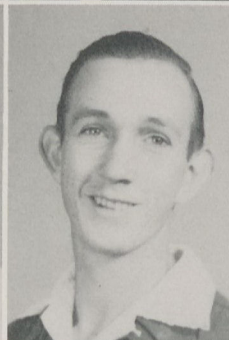
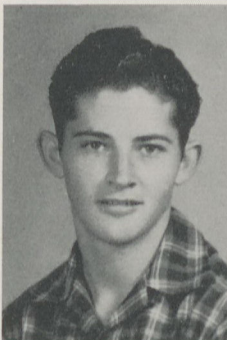
Miss Christina Timmons  
*Sponsor*



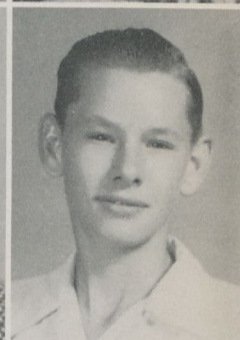
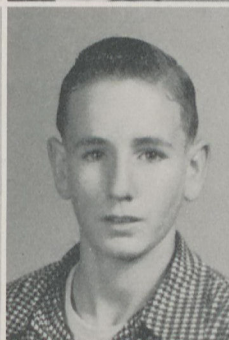
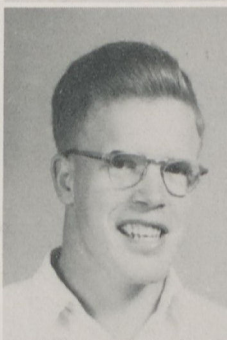
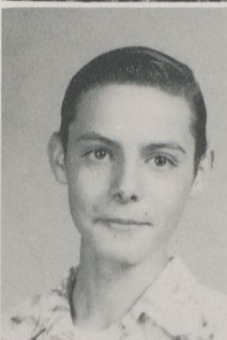
Thurman Blanton  
Dorothy Bond  
Kendall Calhoun  
Peggy Jo Cavender



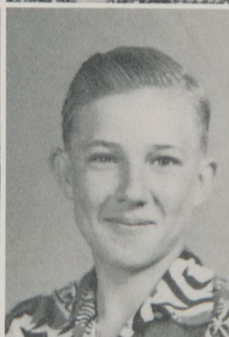
Billy Cline  
Bobby Cochran  
J. T. Darby  
Magdalene Ghorley



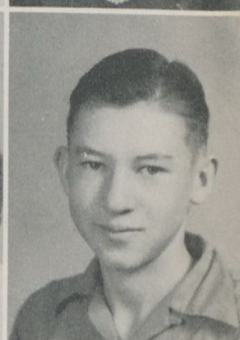
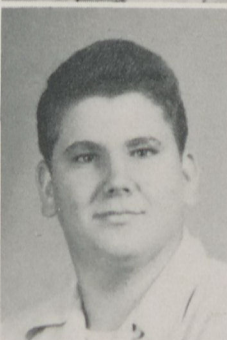
Junior Grady  
Charles Grambling  
J. C. Hufstettler  
Tony King



Mrs. Martha Burgess  
*Sponsor*  
Lillian McFarland  
Leonard Moody  
Lorene Pope



Earl Rutledge  
Bobby Satterfield  
Grace Smith  
Eugene Walker



*Not shown:*  
Dennis Childers  
Irene Darby  
L. C. Gibson  
Charles McFarland  
Patsy Parker

Leon Wilkie  
Milburn Worley











**ORGANIZATIONS**





PHI ALPHA LITERARY SOCIETY



*Debate Speakers*—Eubanks, Williams, Chapman, Payne.



*Mascot*  
Susan New



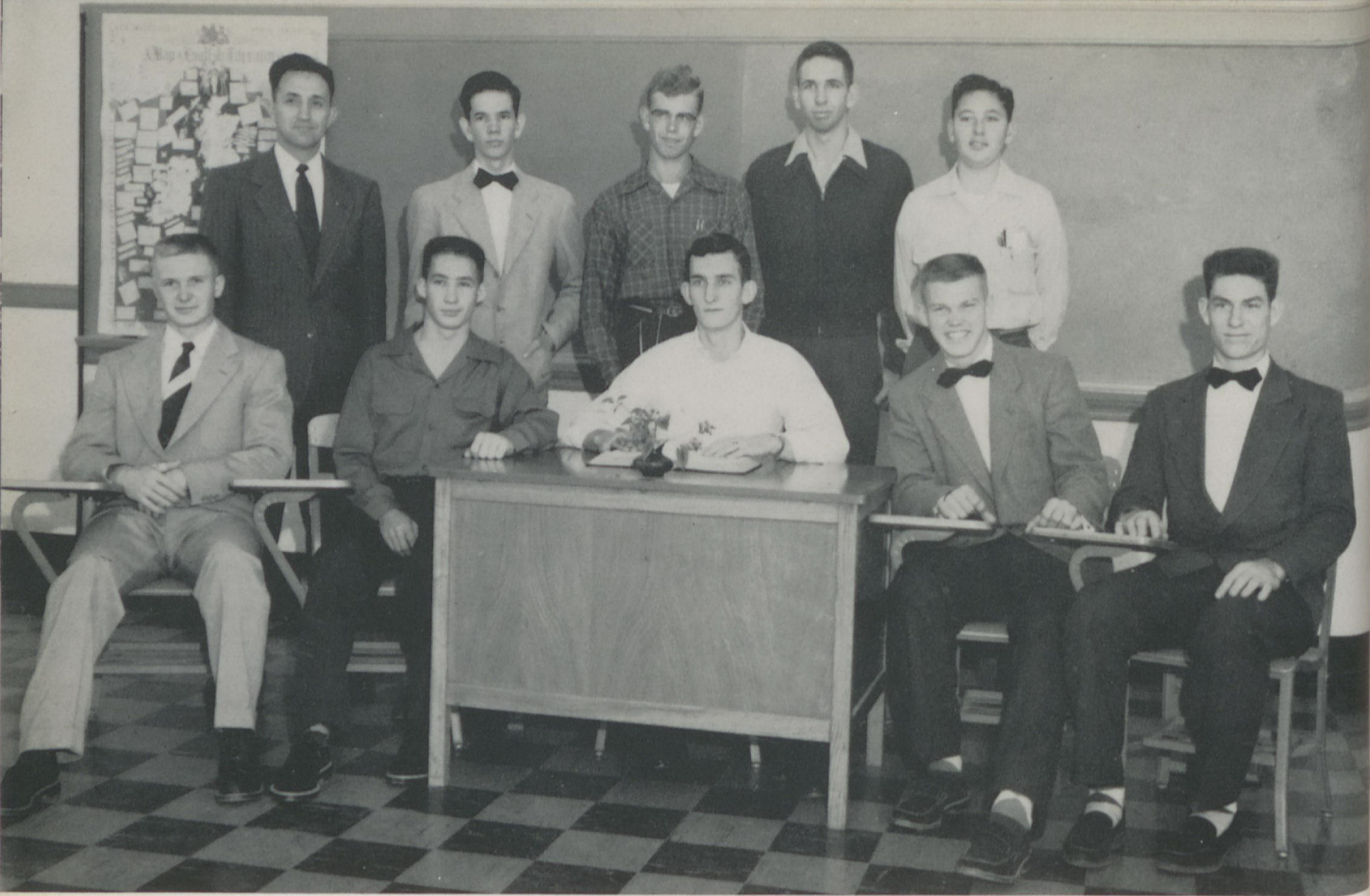


PHI DELTA LITERARY SOCIETY

*Debate Speakers*—Left to right: Cox, Harrison, Herndon, Fredrick







PIERCE LITERARY SOCIETY

*Debate Speaker*—Left to right: Henderson, Detrich, English. Standing: Croker







HAYGOOD LITERARY SOCIETY

*Debate Speakers*—Left to right: Vinson, Wright, Hix. Standing: Mixon.







REINHARDT COLLEGE GLEE CLUB—Mr. W. C. Stone, Director.

THE DOUBLE SEXTET—Composed of members chosen from the Glee Club.







BAPTIST STUDENT UNION COUNCIL



STUDENT FELLOWSHIP COUNCIL





STUDENT COUNCIL—Sitting, left to right: Sheila Chatfield, Barbara Herndon, Mary Harrison, Wayne Lifsey, Bill Hill, Frank Croker. Standing: Martha Payne, Dot O'Bryant, Jack Henderson, Wilson Hix, Jerry Perry, Martha Chatman, Jean Hames, Carolyn Rocquemore, Dot Nally, Carol Butler.



Barbara Herndon  
*First Quarter President*



Martha Chatman  
*Second Quarter President*





THE EDWARD L. THORNDIKE CHAPTER of THE NATIONAL FUTURE TEACHERS of AMERICA—OFFICERS: President, Carolyn Roquemore; Vice President, Betty Champion; Secretary, Levantia Cox; Sponsor, Miss Christina Timmons.

INTERNATIONAL RELATIONS CLUB which studies problems and sponsors the international collegiate debates—Mr. E. H. Jernigan, Sponsor.







PI EPSILON—College Honorary Society for those who maintain a "B" or above average in each subject.

BETA CLUB—National Honor Club for high school students who maintain high scholastic averages.





## HILTONIAN STAFF



Standing, left to right: Jo Ann Phillips, Miss Mary Ruth Miller, Sponsor; Sheila Chatfield, Bobby Payne, Martha Chapman, Jack Henderson, Betty Champion, George English, Mary Harbin, Ovit Foster.





COLLEGE INTERCOLLEGIATE DEBATE TEAM

HIGH SCHOOL INTERSCHOLASTIC DEBATE TEAM







**SPORTS**









## TALLULAH ATHLETIC TEAM

*Big Chief*—DOT NALLY      *Little Chief*—JEAN HAMES



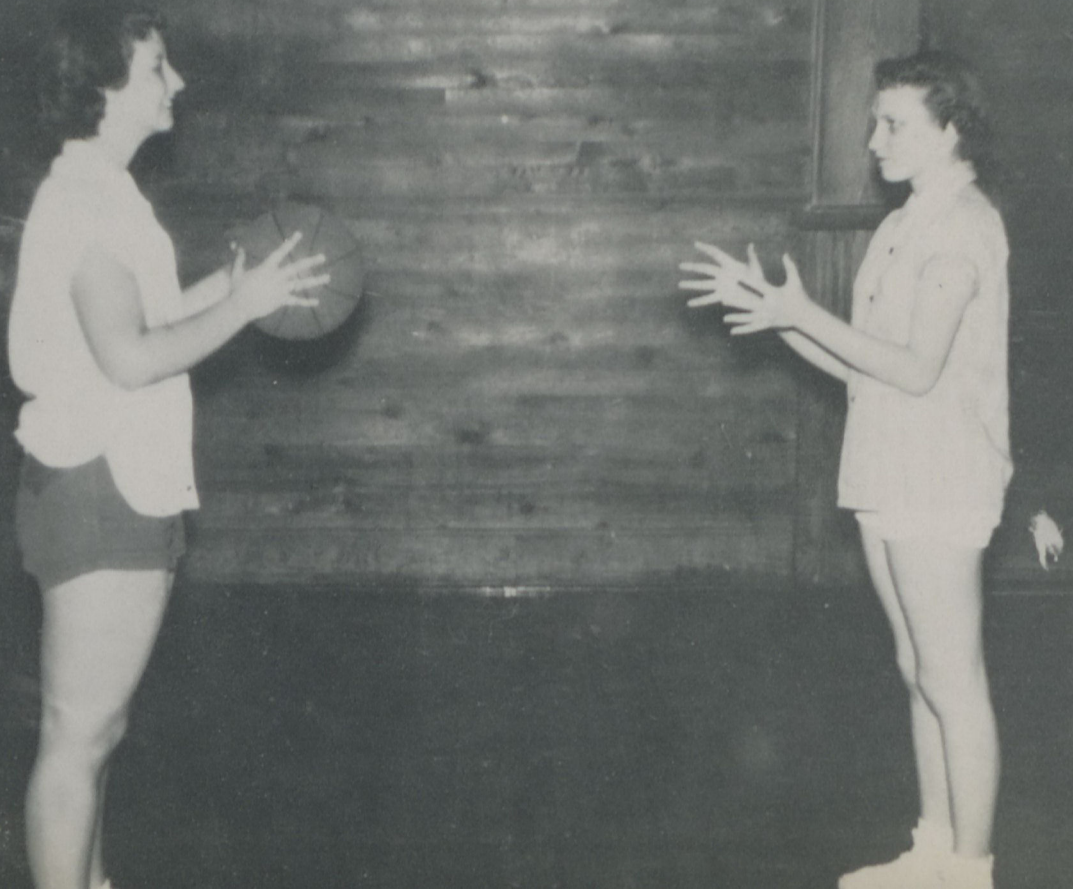




## CHOCTAWS ATHLETIC TEAM

*Big Chief*—MARY HARRISON

*Little Chief*—SHEILA CHATFIELD







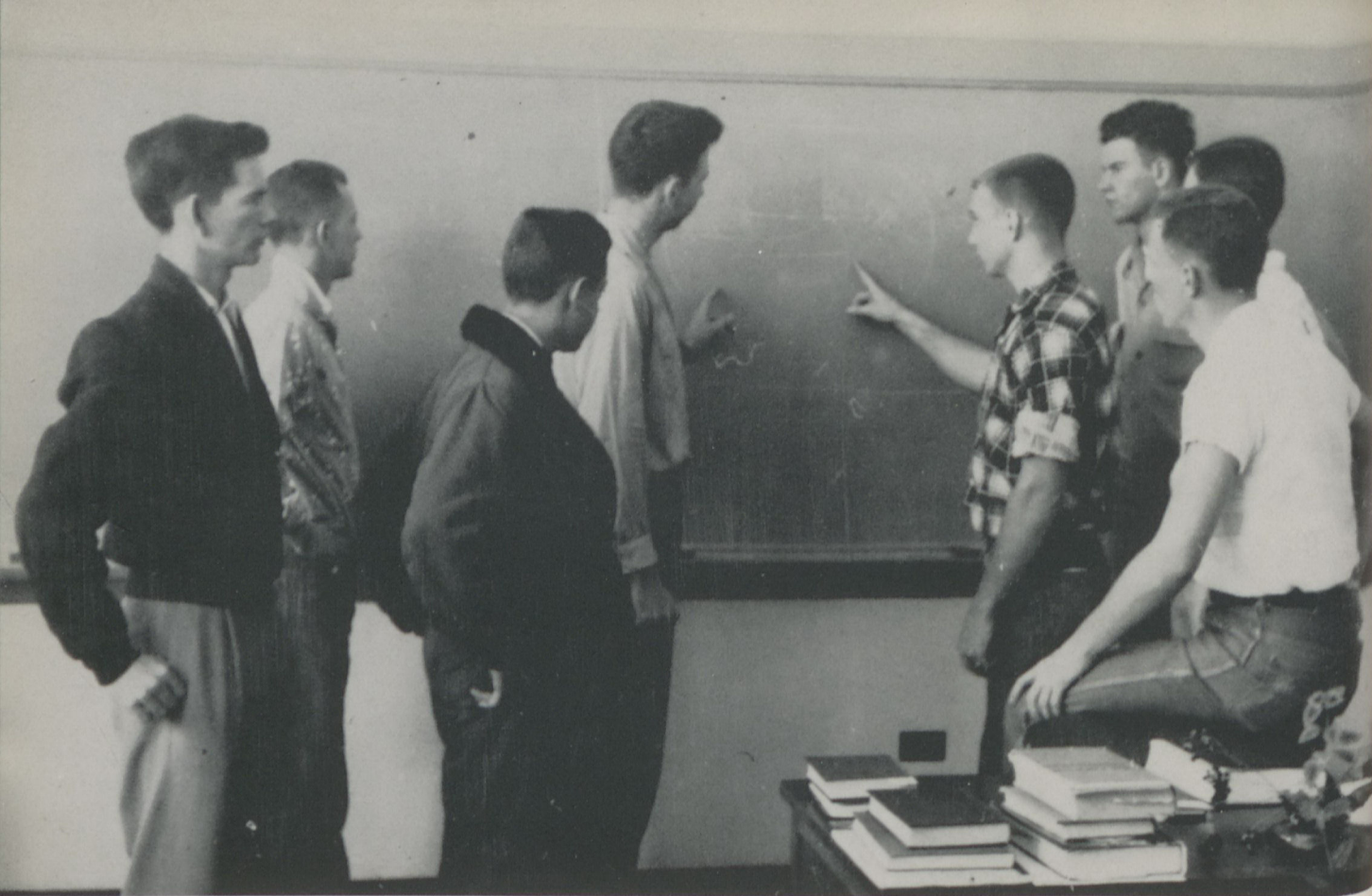
## MOHAWKS ATHLETIC TEAM

*Big Chief*—BILL HILL

*Little Chief*—FRANK WATKINS



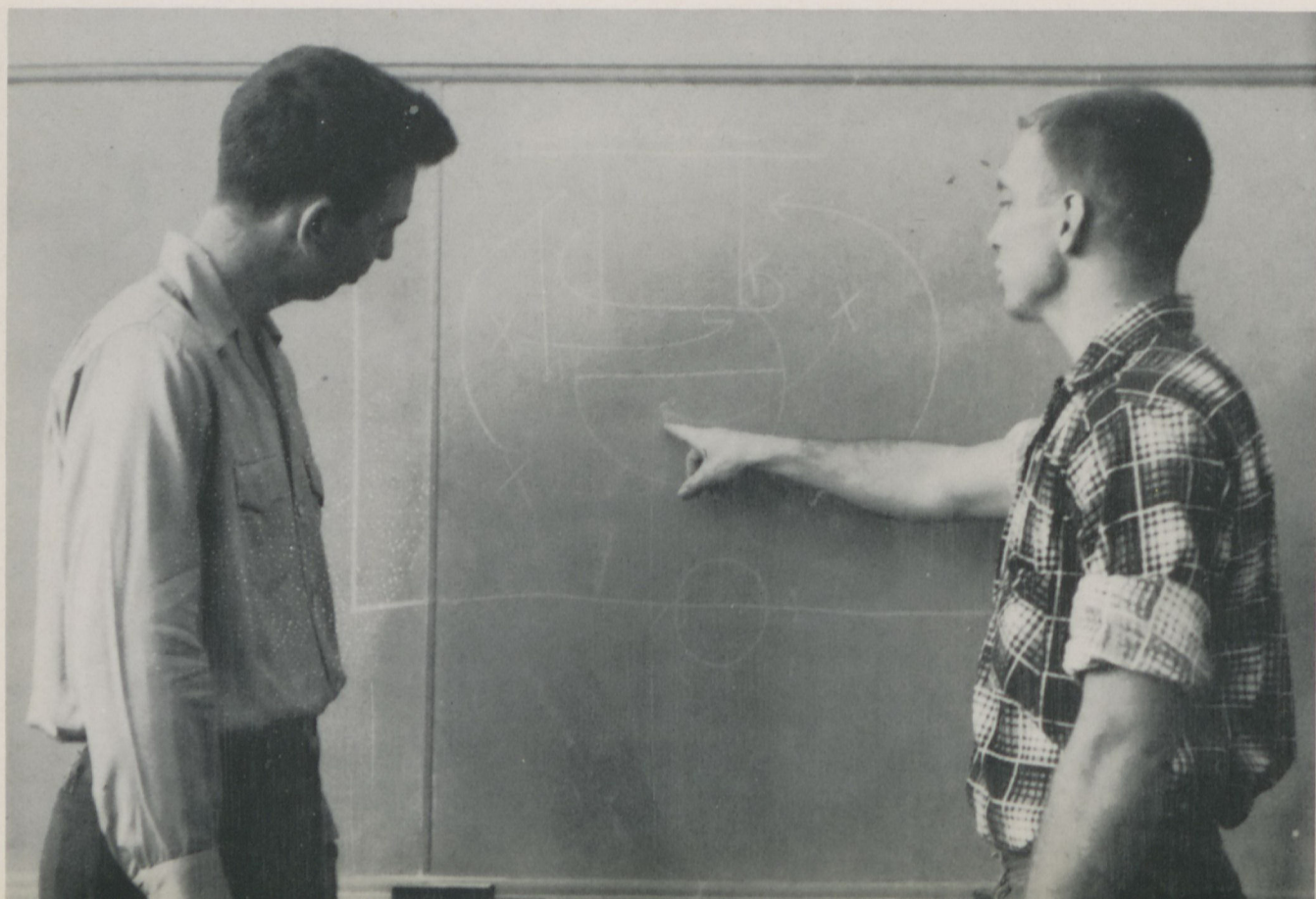




## SEMINOLES ATHLETIC TEAM

*Big Chief*—FRANK CROKER

*Little Chief*—LOUIS MIXON







*Cherokee Phoenix Queen*

MARTHA PAYNE





*Miss Pierce*

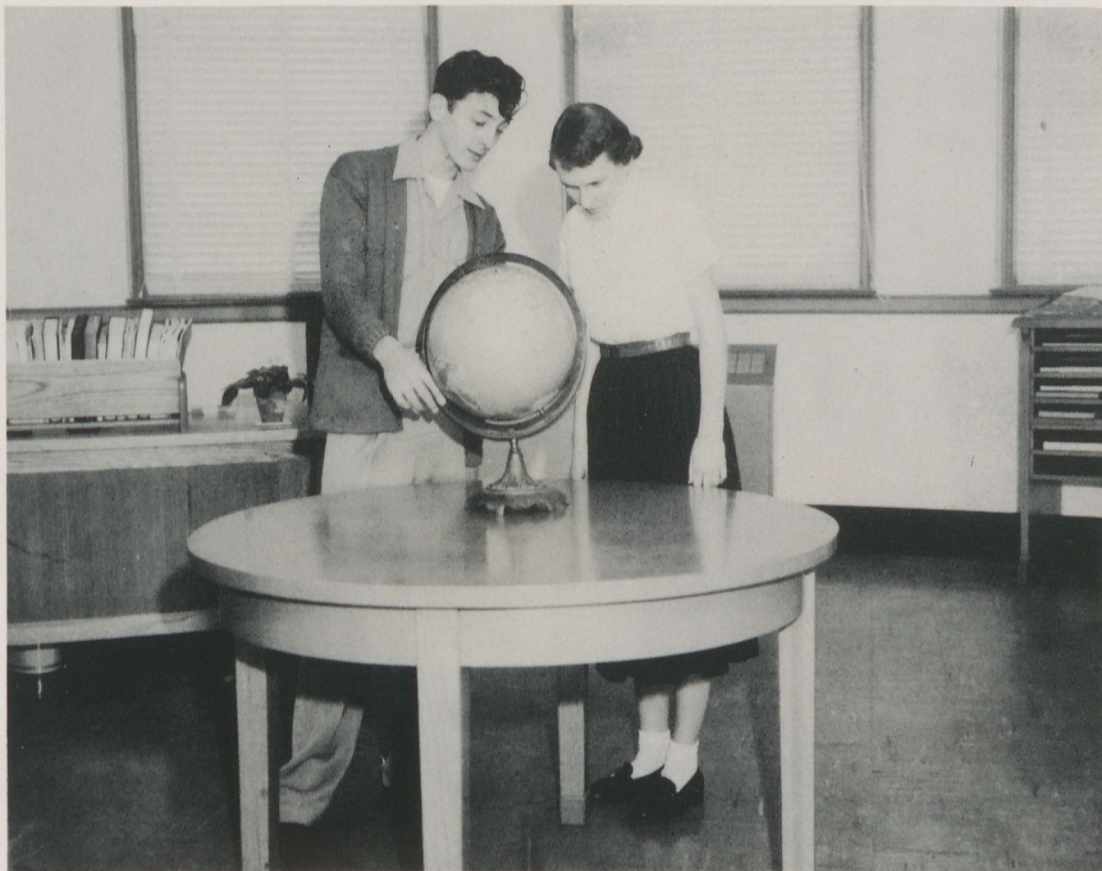
BETTY BENTLEY

*Miss Haygood*

MARGIE RUTLEDGE



*Superlatives*  
*College Senior Class*



*Best All Round*

MARY HARRISON

TOM WARMACK



*Most Handsome*

*Most Beautiful*

BILL HILL

MARILYN KILGORE



*Most Talented*

TOM WARMACK

MARTHA PAYNE







*Best Dressed*

MARY HARBIN

JIM LUTZ



*Most Likely to Succeed*

TOM WARMACK

MARTHA CHAPMAN





*Most Intellectual*

TOM WARMACK  
SHEILA CHATFIELD



*Most Athletic*

FRANK CROKER  
JEAN HAMES





*Wittiest*

WILSON HIX

LEVANTIA COX



*Friendliest*

JERRY PERRY

MARY HARRISON



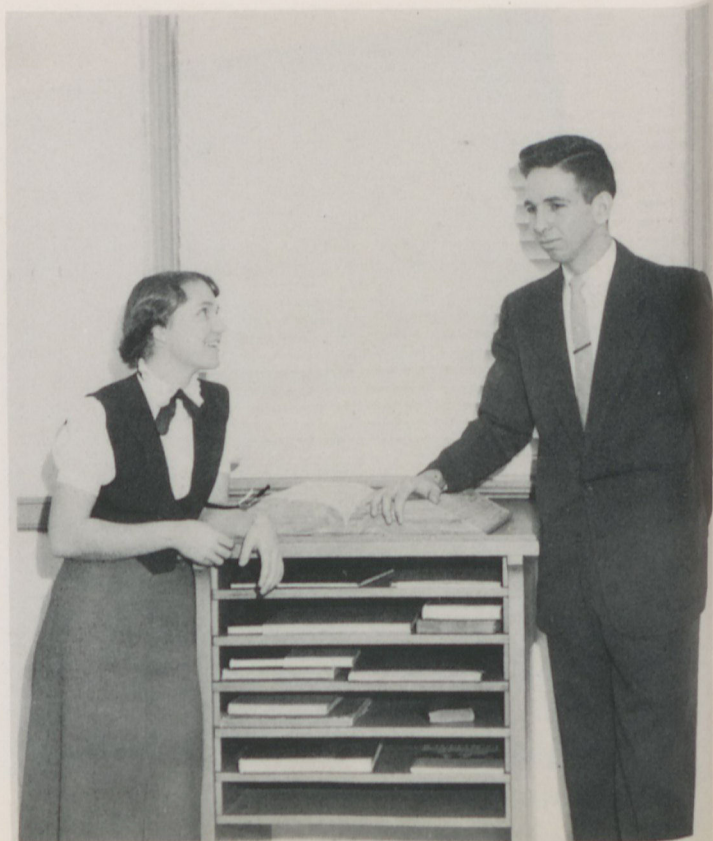


*Most Popular*

TOM WARMACK  
MARTHA CHAPMAN

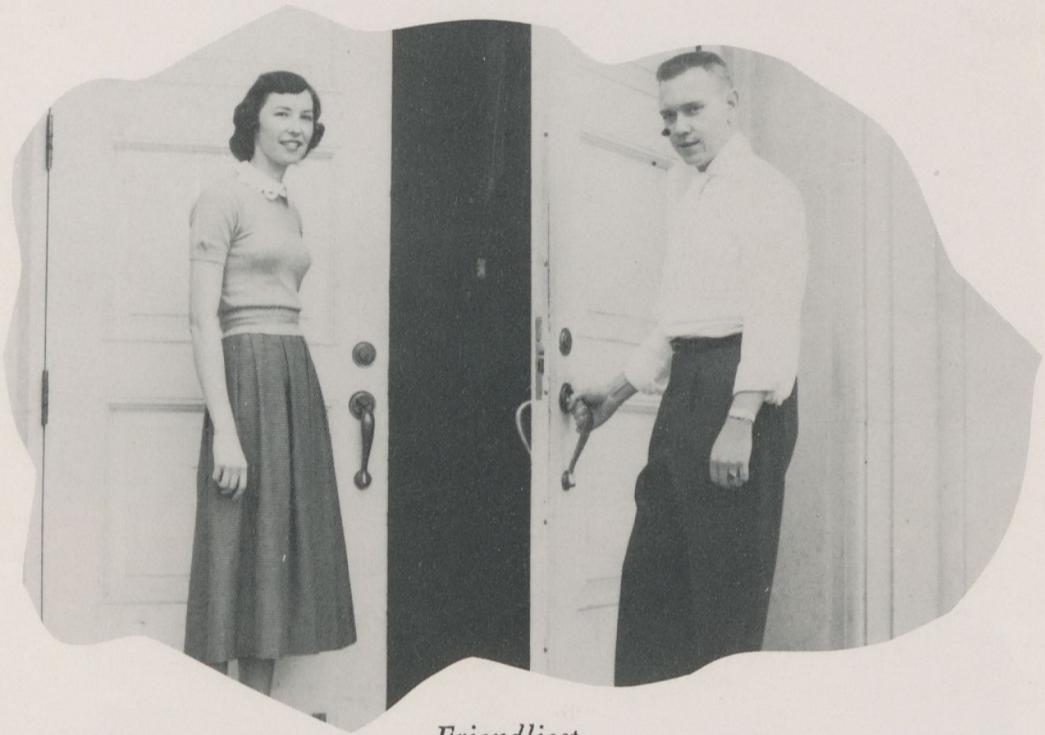
*Most Versatile*

FRANK CROKER  
BARBARA HERNDON





# *High School Superlatives of the Senior Class*



*Friendliest*

INEZ ARNOLD

DEWEY VINSON

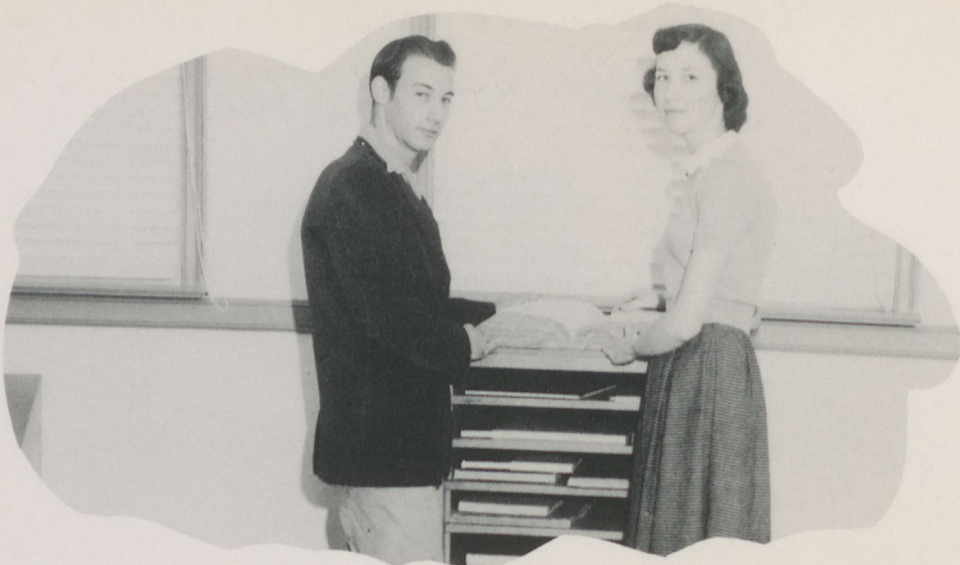


*Wittiest and Most Popular*

JOYCE PRITCHARD

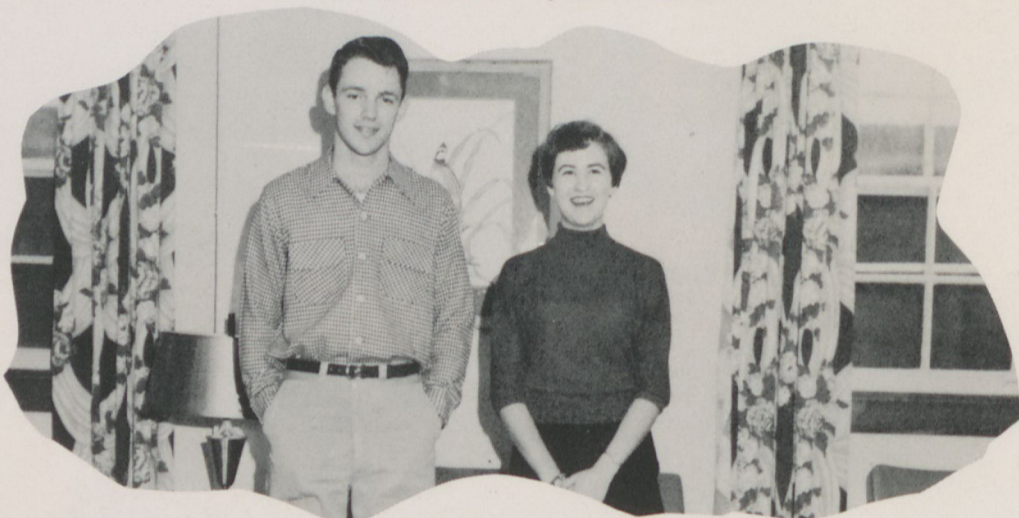
JERRY DOBSON





*Most Versatile*

INEZ ARNOLD      JERRY DOBSON



*Best Dressed*

MARGARET BENNETT      H. B. PAYNE



*Most Athletic*

NINA SAVAGE      GEORGE HARRELSON





*Most Likely to Succeed*

JOYCE PRITCHARD      JERRY DOBSON



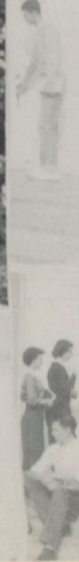
*Most Handsome*

H. B. PAYNE

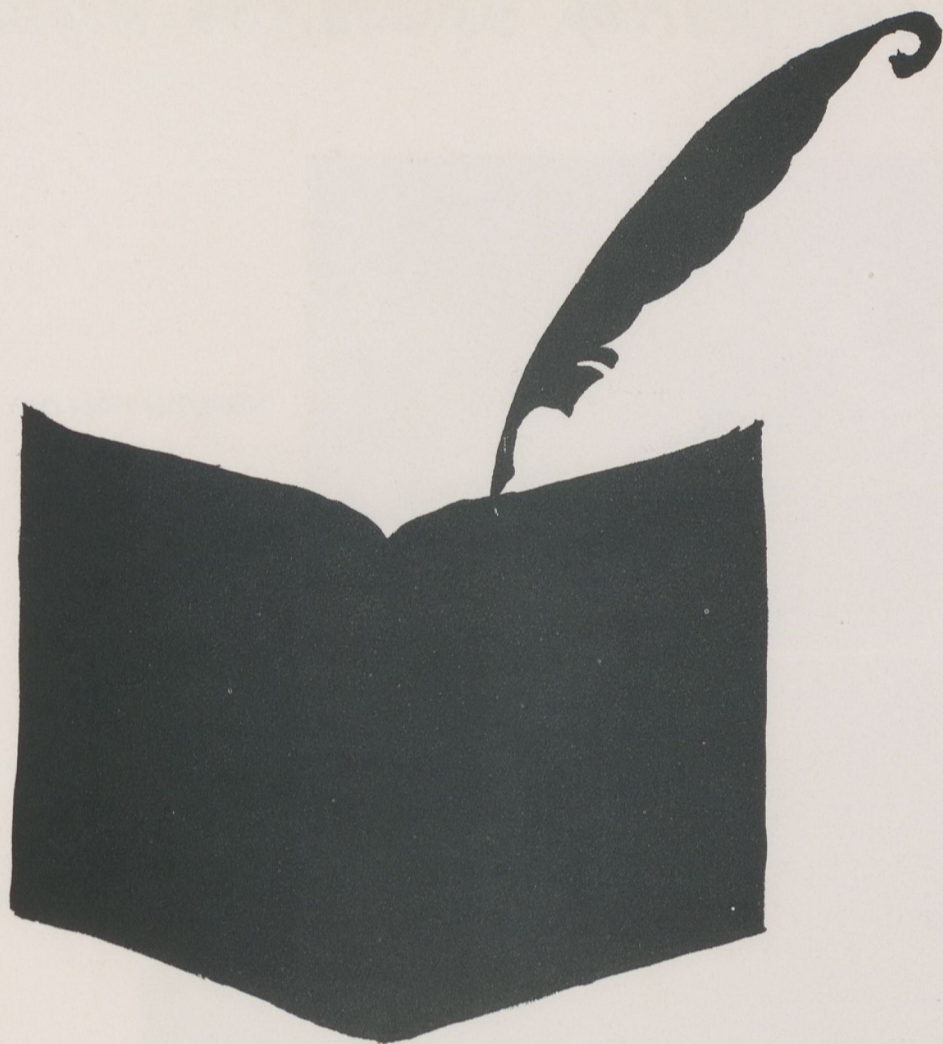
*Most Beautiful*

MARGIE RUTLEDGE









**STORY  
OF THE  
YEAR**



# *The Year of '53 and '54 Begins*



REGISTRATION DAY



COUNSELING

Making new friends at the  
beginning of the year.



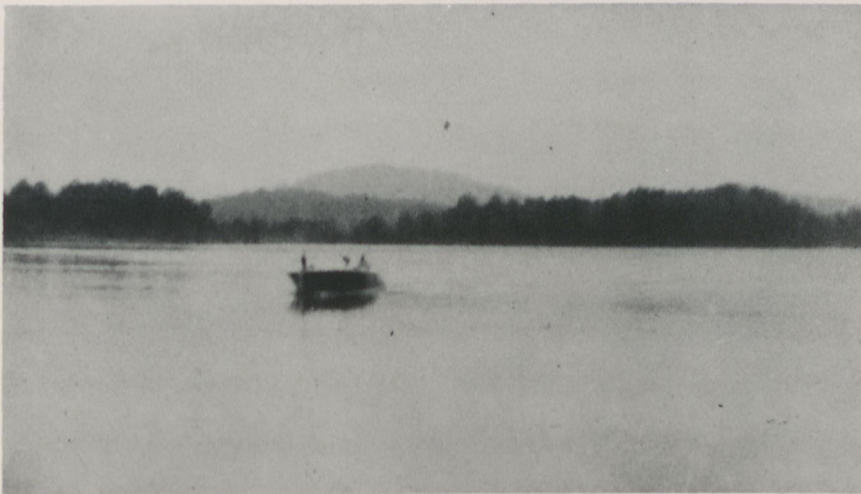


# *Invitations, Picnics and Parties*

ALPHA PARTY



HAYGOOD PARTY



A scene from the PIERCE PARTY.



# *Initiation Day for the Literary Societies*



"Wow, look at those painted girls!"



Wonder where she is going?

Although they belong to different societies they still love each other.





# Recreation

Volleyball game on Friday night during the volleyball season.



Well, well, what do we have here?

CHEERLEADERS



"Get something to eat here."

Snack bar at the gym, open during the basketball games on Friday night.



# *Activities*



STUNT NIGHT



Studying for quarter final exams.

"THE THINKER"  
Working in the office.





# *Worship Services*

A STUDENT FELLOWSHIP  
WORSHIP CENTER



FELLOWSHIP  
CIRCLE



Before game time.



# *The First Snow Scenes*



"Here comes Santa Claus."



The parsonage under  
a blanket.

The Lunch-Time Battle.





# REINHARDT HILTONIAN

"Voice of Georgia's Oldest Co-educational Junior College"

**The Reinhardt Hiltonian, Waleska, Georgia—Published Bi-Monthly**

December,

# College is Now Accredited

**t To  
anquet  
nber 16**

A banquet will be held on Dec. 16 at 7 p.m. in the college dining hall.

Reinhardt is an  
and has become some-  
on here. It is a for-

s for  
 e fac  
 and t  
 pecial  
 will b  
 stude  
 sh to  
 kets  
 ver, ti  
 late

under  
s. Br  
e of t  
the  
uet.  
ral o  
work.  
ate, l  
lversi  
e gu

and inspirational  
other was the first  
at Reinhardt Col-  
early boyhood was  
a, Georgia.

## t Team ebating

Intercollegiate De-  
ned by Mr. Ernest  
ad several debates  
eason. The season  
group on December  
bated the Univer-  
team in the Reim-  
napel.

of the affirmative  
Harrison, William-  
ayne, Rome; and  
Cartersville, alter-  
ative team is com-  
posed of Chapman, Wood-  
ferndon, Snellville;  
erson, Mount Airy,

# Youth For Christ In Church Work

For many years, Reinhardt has been sending its young religious minded students on deputations into churches and schools to witness for Christ. This year has been no different from the others, because the young people have been witnessing through deputations since the school

At a meeting held during the first week of December in Memphis, Tennessee, Reinhardt College was given full accreditation by the Southern Association of Colleges and Secondary Schools. The Southern Association is the highest accrediting body in this section of the United States. The decision was announced at a business meeting of the Association on Friday morning, December 4. This accreditation is the result of various studies by several men.

## Mr. Burgess Attends New York Meeting

J. R.  
ng in  
of the  
meri-  
nt. A  
ssmen  
group  
idents  
sup-

priv-  
rning  
that  
r the

Mr. J. C. Stiles, chairman of the Board of Trustees of Reinhardt College, Mr. J. R. Burgess, Jr., President of the college, and Dr. Max Dixon, Dean, attended this week-long meeting. They went before the Junior College Committee of the Southern Association on November 30 on behalf of Reinhardt, to answer questions connected with the total program of the school.

The accrediting committee which visited the campus on October 14-16 gave a report on the school also. This committee consisted of President R. L. Brantley of, Virginia Interment and Bristol, Virginia, and W. Piper of College located 7. Their report alifications of he beauty of the campus, nd library, Reinhardt

is to say  
it after  
re very  
at has  
ollege.  
have  
ther  
ove  
for the  
who are  
udents in

## MINISTERIAL STUDENTS WORK AT MOUNT ZION

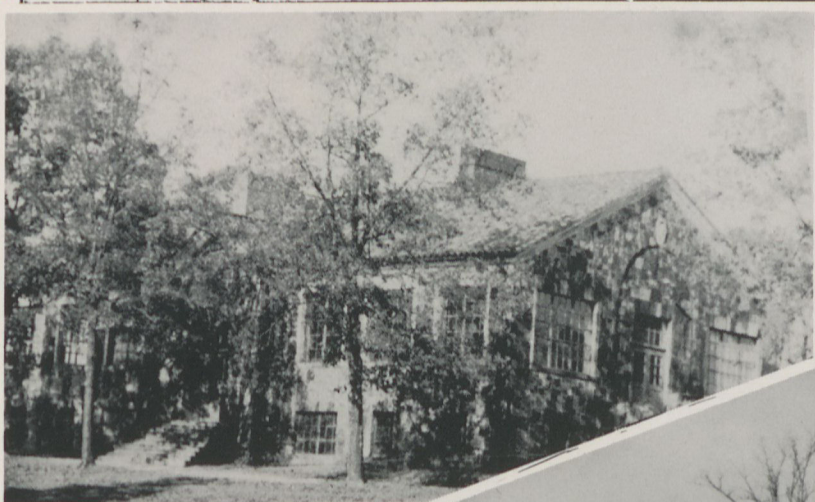
Two of Reinhardt's ministerial students, Wayne Lifsey and Bobby Jones, have taken the Mount Zion Methodist Church of the Waleska Charge as their work. These students go to Mount Zion each Sun-

## Korean Girl Receives Help

Members of the Cherokee-Pickens Sub-district pledged \$370 to help pay transportation expenses for a Korean girl who wants to attend Reinhardt College. This pledge was made at the regular meeting of the Sub-district held November 16 at the Little River Methodist

## Reinhardt Welcomes Several Speakers During the Quarter

During the past few months, Reinhardt has been honored to have a number of distinguished visitors to speak on different occasions. These visitors include the Reverend and Mrs. Reynolds Greene, the Reverend Ed Kilbourne, Dr. R. M. Moore, the Reverend J. Sanford MacDonald, the Reverend Homer Morgan, and Mr. Michael P. Fellows.





# *May Day Activities*



MAY DAY QUEEN  
and COURT



THE SCARF  
DANCE

THE MAY DAY GATHERING



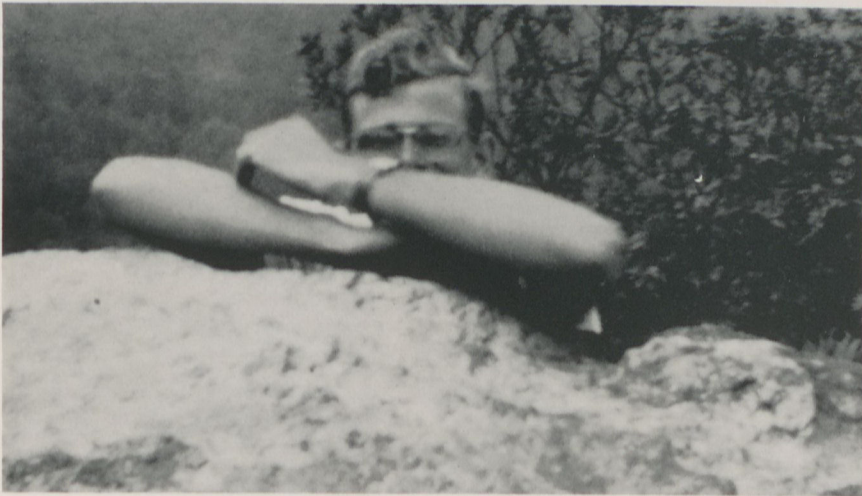


# *Pine Log Mountain Day*

PINE LOG  
MOUNTAIN



"Sitting on top of  
the World."



"The Mountain Climber"



# *Graduation Day*



GRADUATION  
EXERCISES



VALEDICTORIAN

PROUD ALUMNAE







**ADVERTISING**



Phone 525

Compliments of

**SOUTHLAND BUTANE GAS CO.**

MARIETTA HIGHWAY

Compliments of  
HOTEL CANTON DINING ROOM  
Mrs. Claude Greene  
CANTON, GEORGIA

Compliments of  
CANTON HOTEL  
CANTON, GEORGIA

Compliments of

**Cherokee Drug**  
PRESCRIPTIONS FILLED  
Canton, Georgia

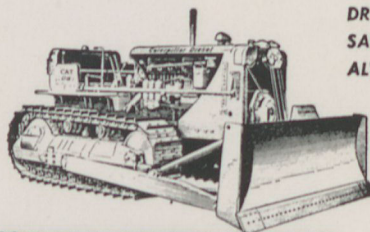
Compliments of

**CHEROKEE FARMER'S  
CO-OP**

CANTON, GEORGIA

**Want More Roads?**

"CATERPILLAR" DIESEL  
TRACTORS - MOTOR GRADERS  
EARTHMOVING MACHINERY  
FROM **YANCEY BROS. CO.**  
WILL HELP BUILD THEM!



DRIVE  
SAFELY  
ALWAYS

**Yancey Bros.  
CO.**

Elgin 3741  
1540 Northside Drive  
ATLANTA, GA.

Phone 3-2241  
1781 Fifteenth St.  
AUGUSTA, GA.

"Caterpillar"  
• Sales  
• Service  
• Repairs





## REINHARDT COLLEGE

Waleska, Georgia

Please send information on your Commercial Department.

Please send enrollment blank.

Name .....

Address .....

City ..... State .....

### A COUPON FOR A PERSON WHO WANTS TO KEEP ON GROWING

2-year course in Secretarial Training

2-year program toward degree in Business Administration or B. S. degree in Teaching

Practical training for personal skill in typing, accounting, shorthand, office practice and machines.

Be Wise — Prepare for Advancement

## REINHARDT COLLEGE



"THE FUTURE BELONGS TO THOSE WHO PREPARE FOR IT"



## BANK of WOODSTOCK

Woodstock, Ga.



# JOHN B. TAYLOR FRIGIDAIRE

WE SERVICE WHAT WE SELL

Ball Ground, Ga.

Phone 80

Compliments of  
RAY DRUG COMPANY  
Fairmount, Georgia

Compliments of  
CHEROKEE BAG COMPANY  
Canton, Georgia

Compliments of  
  
CANTON WHOLESALE COMPANY  
  
CANTON, GEORGIA

MOORE HARDWARE

Everything for  
Home and Farm

Jasper, Georgia

Phone 2332

Compliments of  
  
ALLRED-JORDAN  
DRUG COMPANY

Tate, Georgia

SOUTHERN MARBLE  
& STONE CO.  
  
"The Best at the Lowest Price"  
  
BALL GROUND, GEORGIA

Compliments of  
  
J. R. BEARD & SON  
  
CANTON, GEORGIA



**PETTIT'S**

For Sanitone Cleaning  
Canton-Waleska Road

Compliments of

**CITIZENS BANK**

BALL GROUND, GEORGIA

Compliments of  
**WHITE REXALL  
DRUGS**  
JASPER, GEORGIA

Compliments of  
**Russell Lancey  
Mfg. Co.**  
FAIRMONT, GEORGIA

Compliments of

**HOLBROOK & CARMICHAEL  
MOTOR CO.**

Compliments of

**BRADSHAW SUPPLY COMPANY**

CANTON, GEORGIA





CANTON  
DENIM  
Manufacturers for Over 50 Years  
TURNER HALSEY  
COMPANY

40 Worth St.

New York, N. Y.

Agents for TURNER JONES COMPANY, INC.







KESSLER'S  
Canton, Georgia



CANTON MOTOR SALES

Hardy Moore  
Canton, Georgia





GIFTS

NOVELTIES

SOUVENIRS

**TROY'S**

U. S. Highway 411  
RYDAL, GEORGIA



Compliments of  
**CANTON DRUG COMPANY**  
Canton, Georgia



**PEOPLE'S AUTOMOBILE LOAN  
AND  
FINANCE CORPORATION**

CARTERSVILLE, GEORGIA

Compliments of  
**DIXIE INN**  
WOODSTOCK, GEORGIA

Compliments of  
**BUFFINGTON'S**  
CANTON, GEORGIA

Compliments of  
**WESTERN AUTO STORE**  
Canton, Georgia

Compliments of  
**CANTON THEATRE**  
CANTON, GEORGIA

Compliments of  
**SMITH GIN COMPANY**

CARTERSVILLE, GEORGIA

Compliments of  
**McCLURE BOOK STORE**  
  
CANTON, GEORGIA

Compliments of  
**BECK'S TOURIST COURT**  
  
CARTERSVILLE, GEORGIA



## THE VARSITY

OUR SMALL VARIETY INSURES FRESHNESS  
Curb Service

Atlanta

Athens

"27 Years Trying To Make This the Best Furniture Store  
in Atlanta"

### Lawrence Cobb

PIANOS FURNITURE RADIOS

271-273 Marietta Street, N. W.

AL-0311

Atlanta, Ga.

Compliments of  
**J. H. JOHNSTON CO.**

Established 1888

GENERAL MERCHANTS

POULTRY and LIVESTOCK FEEDS

Woodstock, Georgia







Compliments of  
**ETOWAH BANK**  
CANTON, GEORGIA



**BANK of CANTON**  
CANTON, GEORGIA



SAUL'S  
DEPARTMENT STORE

REYNOLDS &amp; SPARKS

## REEVE'S FLOWERS

Woodstock, Georgia  
CANTON, GEORGIA

## SCHILLING'S HARDWARE

MARIETTA

## GEORGIA

## SAVE WITH SAFETY

Current Dividend Rate 3½% Per Annum, Payable  
December 31 and June 30

SAVINGS INSURED UP TO \$10,000

INQUIRIES BY MAIL SOLICITED

**A. D. LITTLE**  
President

\* P. B. LATIMER  
Vice-President - Alumni

WM. D. LITTLE  
Sec. Treas.

\* J. GUY ROBERTS  
Attorney - Alumni

JORDAN GARDNER  
Attorney

**ROSSER N. LITTLE**  
Director

MARIETTA  
FEDERAL SAVINGS & LOAN ASSOCIATION

Phone 8-7535

112 Atlanta Street

## Marietta

## Georgia

\* Attended Reinhardt College



W. P. STEPHEN'S  
LUMBER COMPANY

"Stephen's Quality is  
Your Best  
Assurance of Economy"

Marietta, Ga.



MORGAN BROTHERS

"Canton's Leading  
Appliance Store"

YOUR GENERAL ELECTRIC  
DEALER

Phone 171

Canton, Ga.

Compliments of

Cobb  
Exchange Bank

MARIETTA

GEORGIA

Compliments of

BAGWELL and SPHERES

Distributors for  
Gulf Oil Products

Phone 560

Canton, Georgia





## JASPER TRACTOR COMPANY

Jasper, Georgia



## JASPER BANKING COMPANY

Jasper, Georgia





## JONES MERCANTILE COMPANY

Canton, Georgia



Compliments  
of

**B. N. AUTO PARTS COMPANY**

**Auto Parts and Accessories**

Phones 411-511

CANTON, GEORGIA

Compliments of

**SEARS ROEBUCK  
and COMPANY**

MARIETTA, GEORGIA



Compliments of  
WALESKA GROCERY &  
SERVICE STATION  
Waleska, Georgia

Compliments of  
WARLICK INCORPORATED  
Cartersville, Georgia

Compliments of

MODEL CLEANERS

Phone 299

Canton, Georgia

Compliments of  
WORLEY GROCERY  
Canton, Georgia

Compliments of  
STANCIL JEWELRY COMPANY  
Jasper, Georgia

Compliments of

BARTOW TRACTOR & IMPLEMENT CO.  
CARTERSVILLE, GEORGIA

Compliments of  
Canton  
Hardware  
Company  
Canton, Georgia

Compliments of  
BERT SMITH DRUGS  
CARTERSVILLE, GEORGIA

Compliments of

A. L. JONES CONSTRUCTION

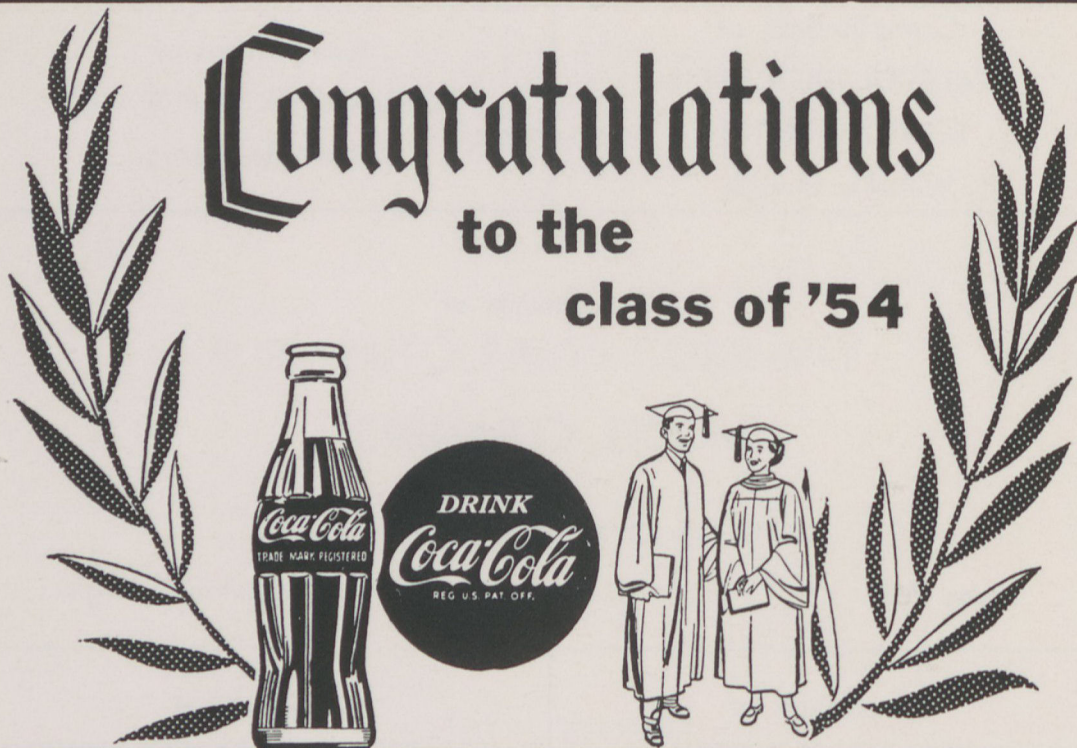
WE SPECIALIZE IN LAKE BUILDING

JASPER, GEORGIA



# Congratulations

to the  
class of '54



BOTTLED UNDER AUTHORITY OF THE COCA-COLA COMPANY BY  
MARIETTA COCA-COLA BOTTLING COMPANY

Compliments of  
**Pine Crest  
Inn**

HOLLY SPRINGS, GEORGIA

Compliments of  
**Cherokee Feed  
and Supply Co.**

Farmers Exchange  
Oak Grove Hatchery

SEXTON Quality Foods  
Compliments of  
**JOHN SEXTONS & CO.**  
Manufacturing  
Wholesale Grocers  
P.O. Box 4124  
ATLANTA 2, GEORGIA

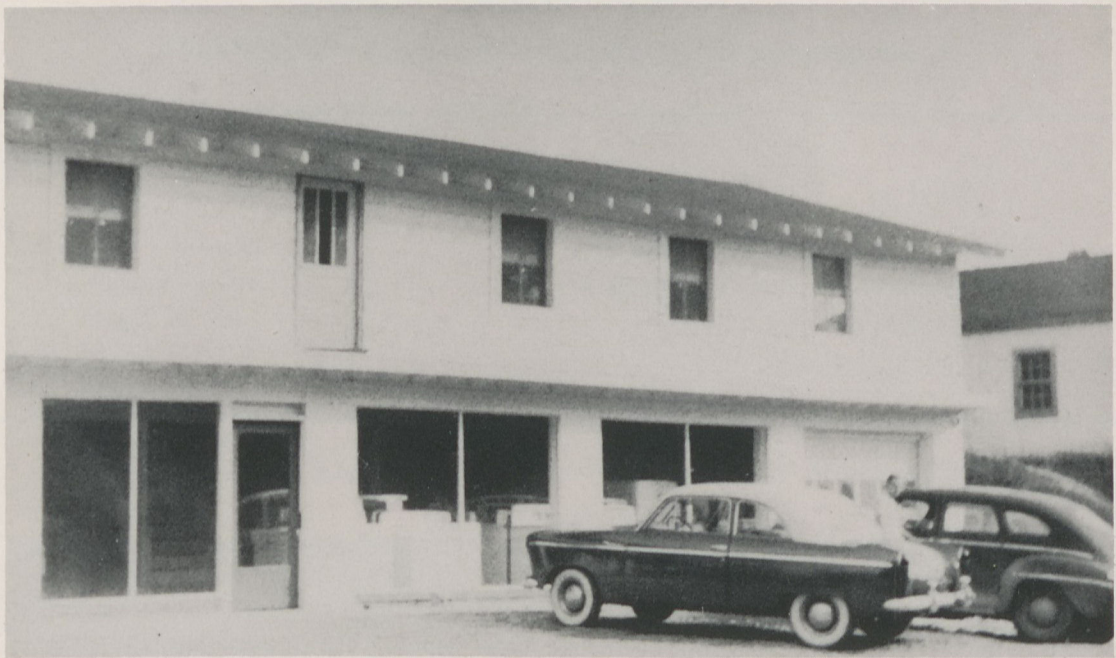
JOE GARRISON—PAUL PHILLIPS

Phone

505

571





Compliments of  
JOHN R. CUMMINGS  
Phone 573-R  
CANTON, GEORGIA



Compliments of

BLAIR-ALUMINUM FURNITURE COMPANY

MARIETTA

GEORGIA





## Compliments of CANTON JEWELRY COMPANY

### Compliments of

Canton Electric and Furniture Co.  
Fletcher Jewelers and Photographers  
Roberts Marble Co.

Varner's Grill  
Cecil L. Ingram  
C. B. Davis

## Compliments of CANTON—CARTERSVILLE BUS LINE

WALT EDWARDS, Prop.







## STANDARD OIL CO.

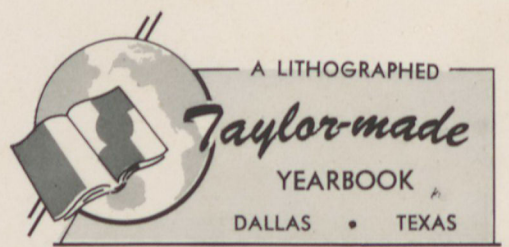
ERNEST STONE, Agt.

Canton, Ga.

Picture—Grandsons  
DAVID and FRANK  
STONE  
Future Reinhardt Boys

### Autographs





A LITHOGRAPHED

*Taylor-made*

YEARBOOK

DALLAS • TEXAS







