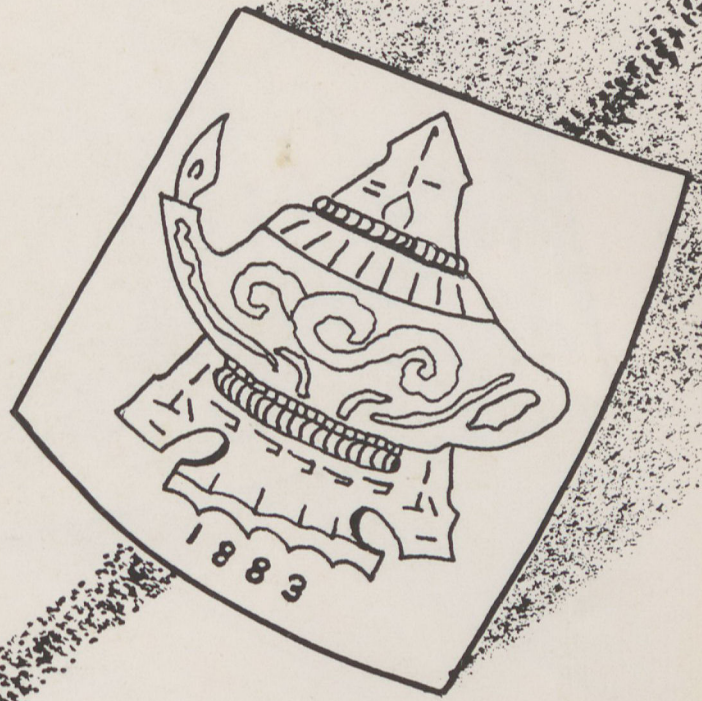




CHEROKEE PHOENIX



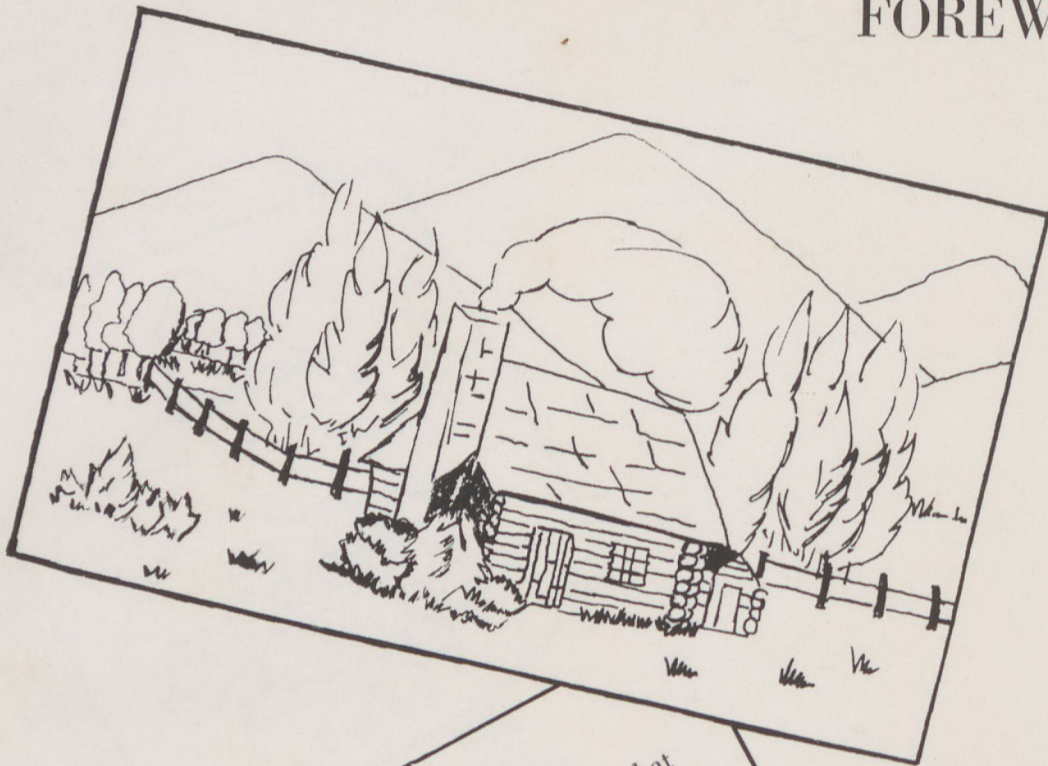
CHEROKEE PHOENIX

1957

Reinhardt College

Waleska, Georgia

FOREWORD



We, the annual staff of 1957, hope that this book will become one of your most prized possessions. As you turn through these pages, may you remember the happy days spent at Reinhardt, "far up in the mountains azure."

We have chosen a simple but, we think, a very fitting theme. It is that of "mountains." Because of the location and religious atmosphere of Reinhardt, we join with the Psalmist and say, "I will lift up mine eyes unto the hills, from whence cometh my help."

With the passing of another year, we have tried to catch a final glimpse of the happiness and friends we've had. The 1957 *Cherokee Phoenix* is yours. You made it; we preserved it through word and picture.

TABLE OF CONTENTS



Dedication
Buildings
Administration
Sophomores
Freshmen
Activities
Favorites
Sports
Story of the Year
Advertisements

DEDICATION



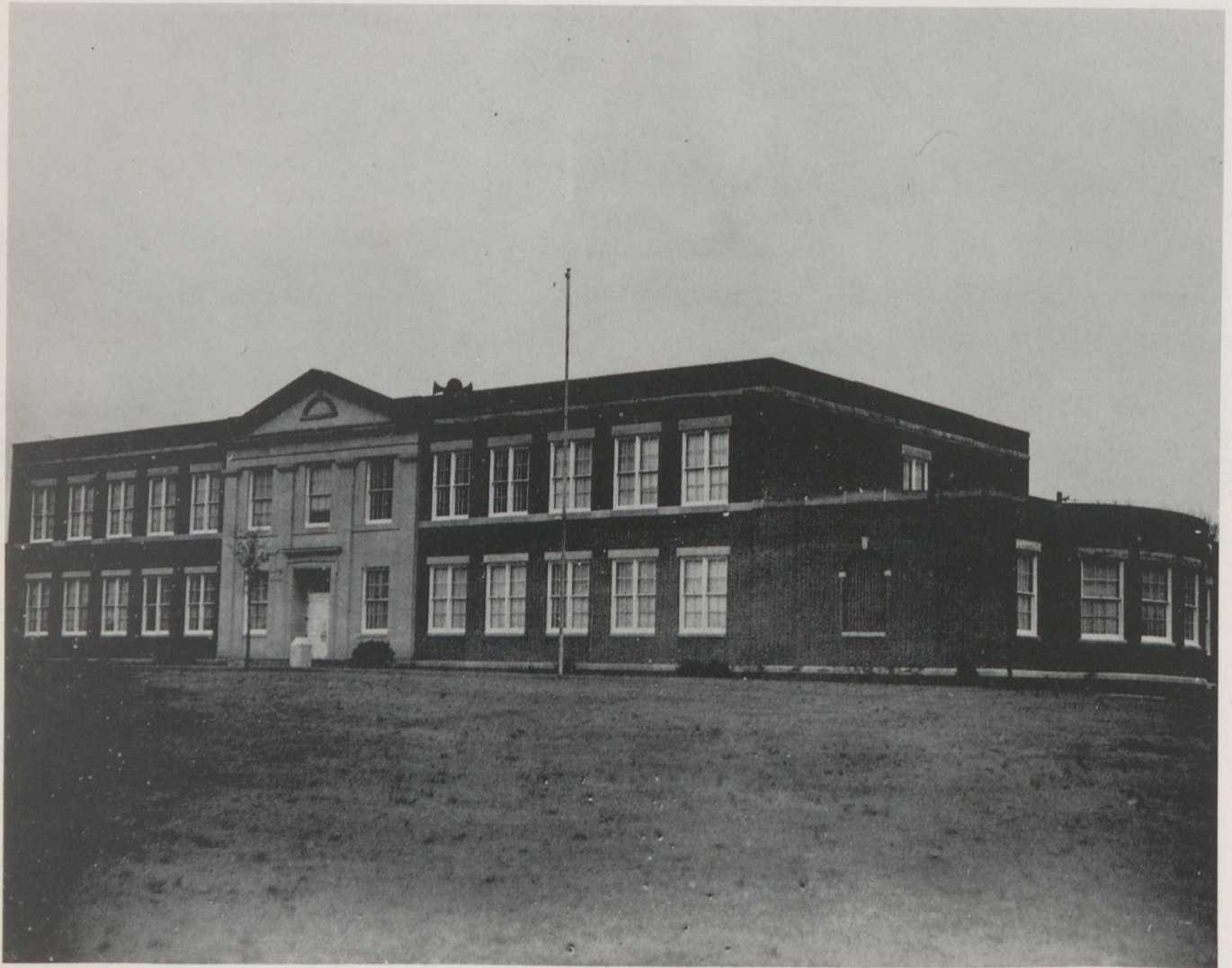
MRS. ADDIE CAGLE



In appreciation for your cheerfulness, your helpfulness, and
your interest in our welfare, to you, Mrs. Addie Cagle, we
dedicate the 1957 Cherokee Phoenix.



ADMINISTRATION BUILDING



The cornerstone of the building was laid by Bishop Arthur Moore on October 27, 1950, and in May of 1956 the building was dedicated. This building contains eight classrooms, eight offices, four music rooms, a combination chapel-auditorium, a student center, and storage rooms.

GIRLS' DORMITORY



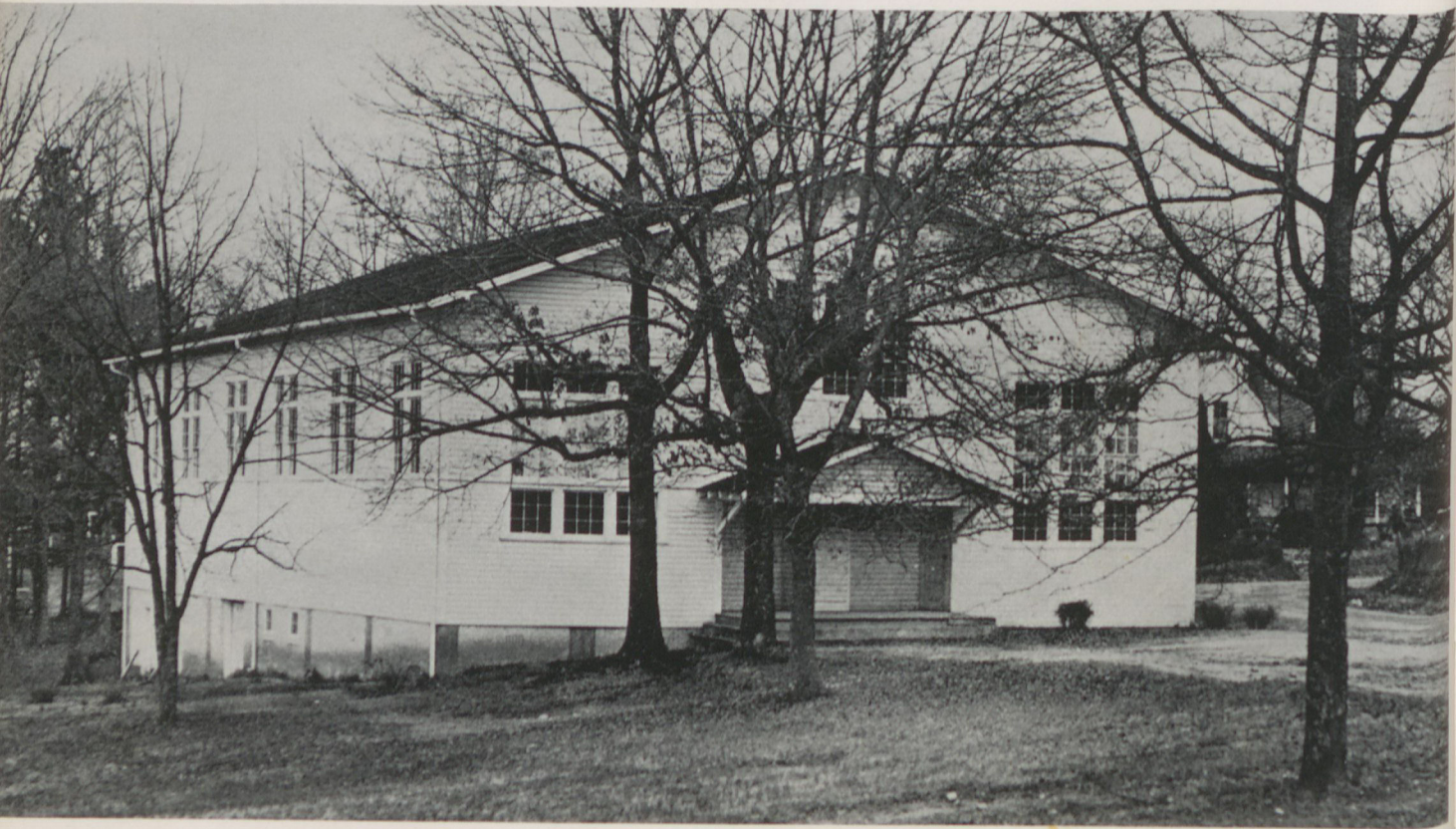
BOYS' DORMITORY

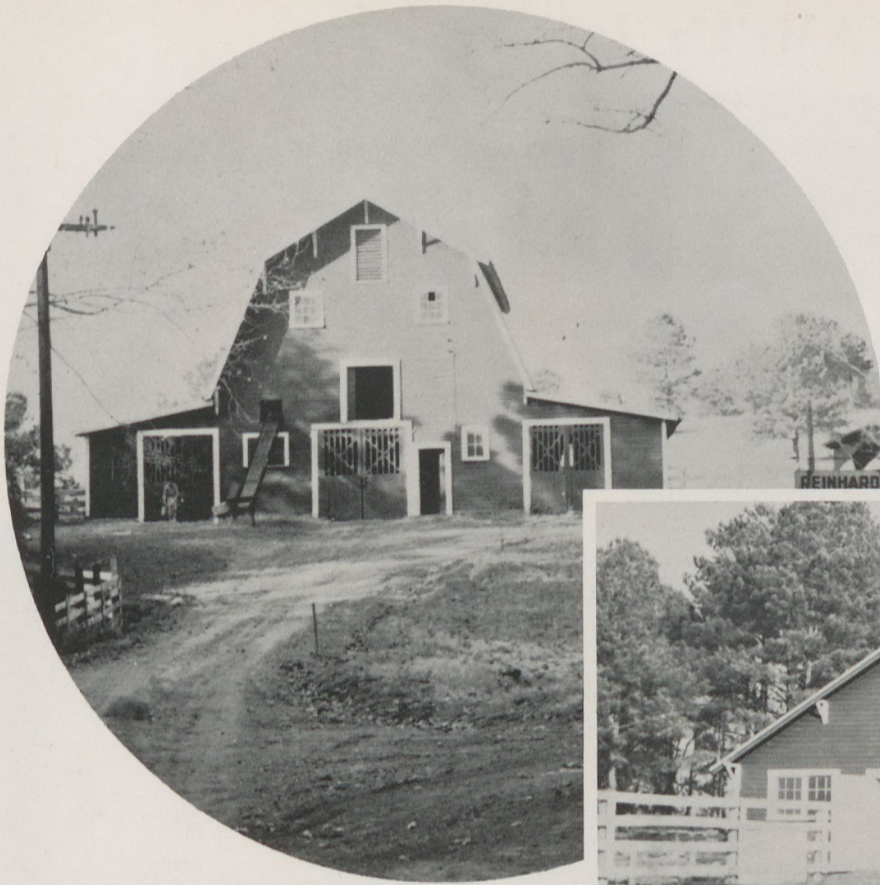


DOBBS BUILDING

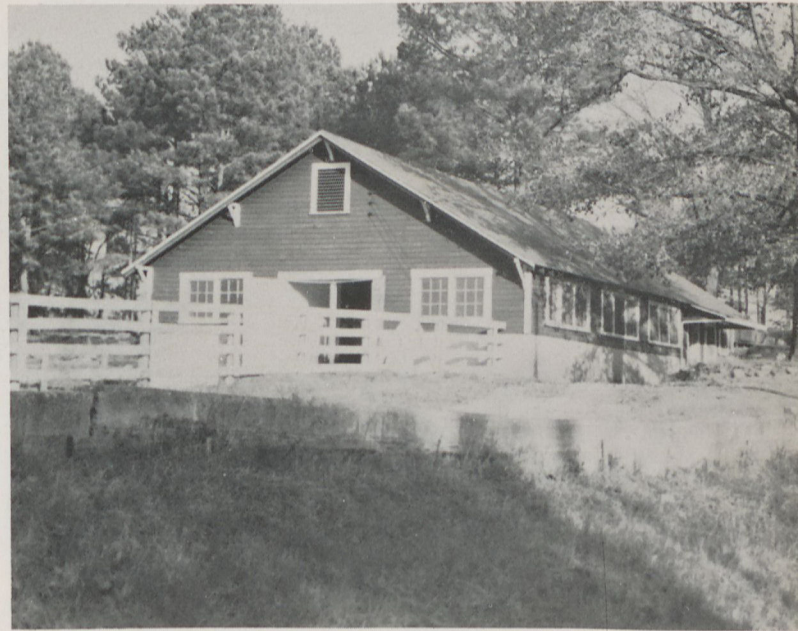


GYM





BARN



DAIRY

MASS PRODUCTION AT REINHARDT

A Yorkshire sow on the Reinhardt College Farm has attempted to establish something of a record with a litter of eighteen pigs. Sixteen survived.

Student Richard Lumpkin helped Farm Manager John Brooke in bottle-feeding for the first few days.



CAMPUS HOMES



Home of President Burgess



Home of Rev. Hall

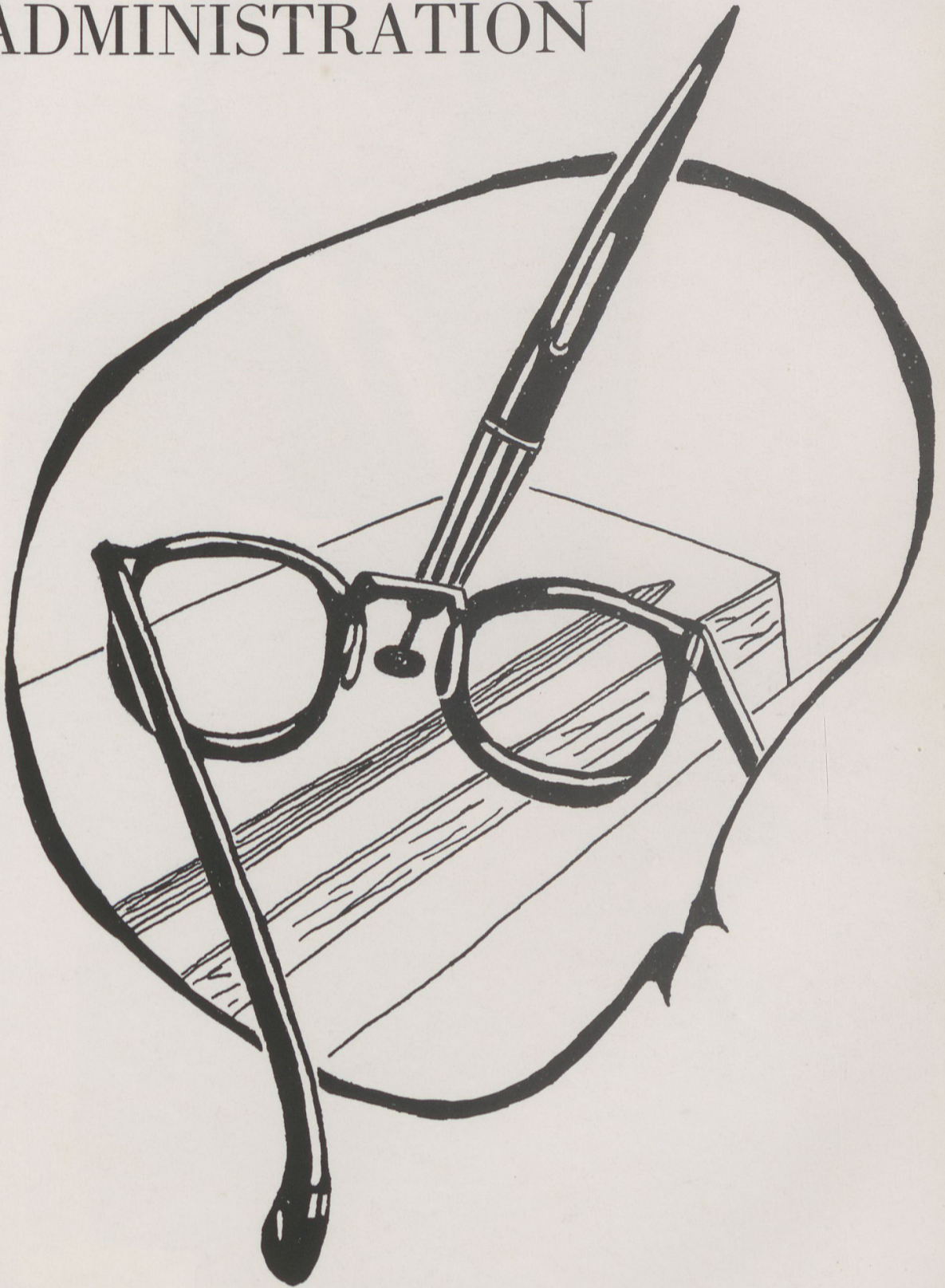


Home of the Browns



Home of the Brookes

ADMINISTRATION





President

J. R. BURGESS, JR.

Reinhardt College
Waleska, Georgia

J. R. BURGESS, JR.
PRESIDENT

To Each Member of the Class of 1957

Dear friend,

This book is a record of your second year as a student on the Reinhardt campus. In just a few years there will be many changes. When you return, the walls of your room may be a different color, the furniture may not be the same, there will even be new buildings, and some familiar landmarks will be gone.

You, too, will change. Someday you and others, especially others, will look at your annual picture and smile.

The world about you will also change. It will continue to get smaller as transportation becomes still faster, and travel to faraway places becomes even more common.

Some of your classmates will surprise you by their great success; others will disappoint you. For you -- the important question is, has your education up to this point prepared you to live in a changing world while preserving the Christian virtues of truth, honesty, justice, purity, loveliness, and speaking well of others?

I hope so. Good speed, and God bless you!

Sincerely yours,

J. R. Burgess, Jr.
J. R. Burgess, Jr.

JRB:bc



Miss Mary Ruth Miller

DIRECTOR OF PUBLIC RELATIONS

A.B., Florida State University; M.A., Peabody College; Graduate Study, Columbia University, University of Southern California, and Shakespeare Institute, England.



Miss Miller teaches English literature. She is the faculty advisor for the Sophomore Class and the Reinhardt Hiltonian, the school paper.

Miss Virginia Shuford
REGISTRAR



A.B., Lenoir Rhyne College; M.A., Appalachian State Teachers College; Graduate Study, Boston University.



Miss Shuford is the instructor of mathematics. She is the sponsor of the Pi Epsilon Literary Society, Phi Theta Kappa, and the Cherokee Phoenix.



Miss Decora Adams

DEAN OF WOMEN

A.B., Georgia State College for Women; M.A., University of Georgia; Graduate Study, Northwestern University, Columbia University, and George Peabody College for Teachers.



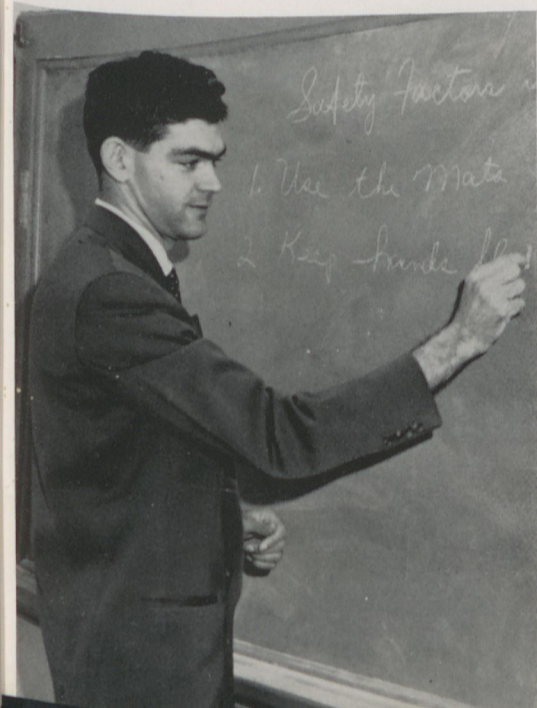
Miss Adams teaches English. She is the councilor of the Methodist Student Movement and a member of the Religious Life Council.



Mr. Roger Brown

DEAN OF MEN

B.S., Georgia Teachers College



Mr. Brown is the instructor of physical education, and he is the faculty sponsor of the Student Government Association.



MRS. MARTHA STALLINGS BURGESS
Education Councilor
University of Georgia
B.S.
Candidate for
M.S.



MISS ELLA M. CREGGER
Librarian
University of Tennessee
B.A.
Emory University
M.L.S.

FACULTY



MRS. STEVE M. CULLENS
Commercial
Union College
Lincoln, Nebraska
B.A.
Graduate Study,
University of Tennessee



MR. J. HAGOOD
History
University of South Carolina
A.B., M.A.



REV. P. V. HALL
Bible and Religious Education
Emory University
A.B., B.D.
Graduate Study,
Cambridge University, England



MR. RONALD W. LEE
Music
Cincinnati Conservatory of Music
B. Mus.
University of Michigan
M. Mus.

FACULTY



MISS MIRIAM RUNYON
Science
Agnes Scott College
B.A.
Vassar College
M.A.





MR. JOHN BROOKE
Farm Manager

STAFF



MRS. ADDIE CAGLE
Supervisor of Student Grill

MRS. WEYMAN COX
Secretary-Bursar



MRS. GLADYS MOORE
Dietitian



MRS. RUTH WILDER
Girls' Housemother



SOPHOMORES



SOPHOMORE OFFICERS



President RALPH TALTON
Vice President DIANNE RUFFIN
Secretary MARY JO THOMPSON
Treasurer CARROLL PENDLEY
Class Sponsor MISS MARY RUTH MILLER

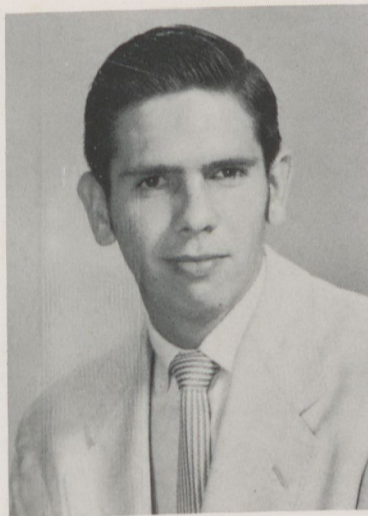
YVONNE ADAMS
Hartwell, Georgia

Alpha, Glee Club, Ministerial Association,
Pi Epsilon, M.S.M., Choctaw.



EFFIE ANDERSON
Mount Airy, Georgia

Alpha, F.T.A., Ministerial Association,
B.S.U., Choctaw.

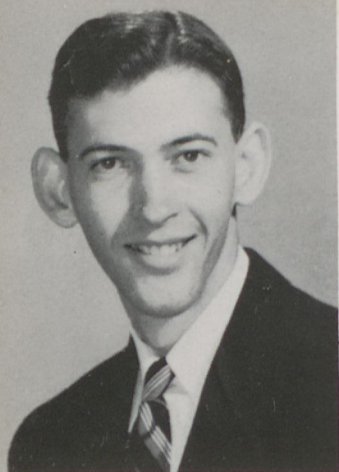


FRANK ASHBAUGH
Lithonia, Georgia
Haygood, B.S.U., Mohawk.



MARY SUE BANNISTER
Ball Ground, Georgia

Glee Club, Pi Epsilon, Alpha, Choctaw,
Student Council, B.S.U.



BILL BRADFORD
Cartersville, Georgia
Seminole, Day Student Organization,
F.B.L.A.



BILLIE BROOME
Rydal, Georgia
Alpha, B.S.U., Choctaw, F.T.A.

MARTHA BURGESS
Waleska, Georgia

Delta, Glee Club, Student Council, Girls'
Quintet, Tallulah, M. S. M.



MARY HELEN BURNEY
Canton, Georgia
Tallulah, Alpha, Day Student Organi-
zation.



BEN BRYANT
Cohutta, Georgia

Haygood, Mohawk, M.S.M., Cherokee
Phoenix.



LOUGENE CARNES
Carnesville, Georgia

Alpha, F.T.A., B.S.U., Choctaw, Chero-
kee Phoenix.



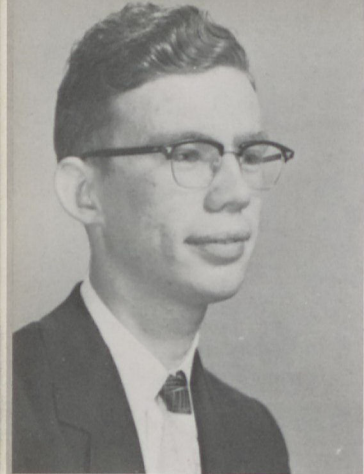
DONNA CHASTAIN
Smyrna, Georgia

M.S.M., Pi Epsilon, F.T.A., Delta, Tal-
lulah.

HUBERT CLEMENTS
Lumber City, Georgia

Pierce, Seminole, Pi Epsilon, Glee Club,
Boys' Quartet.

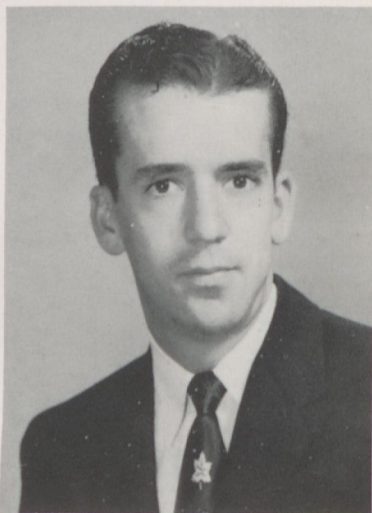




CHARLES CLINE

Waleska, Georgia

Dramatic Club, Seminole, M.S.M., Pi Epsilon, Phi Theta Kappa, Glee Club, Haygood, I.R.C., Day Student Organization, Intercollegiate Debate Team.



FRANK CONLEY

Blue Ridge, Georgia

Seminole, Haygood, B.S.U.

VONCILE COMPTON

Marietta, Georgia

B.S.U., Glee Club, Hiltonian, Cherokee Phoenix, F.T.A., Pi Epsilon, Phi Theta Kappa, Alpha, Tallulah, Dramatic Society, F.B.L.A., I.R.C.



ELGAREE DAVIS

Ellijay, Georgia

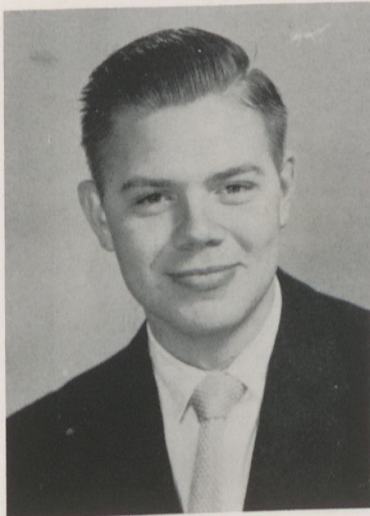
Ministerial Association, Delta, Tallulah, B.S.U.



BETH DORRIS
Smyrna, Georgia
Alpha, F.T.A., Tallulah.

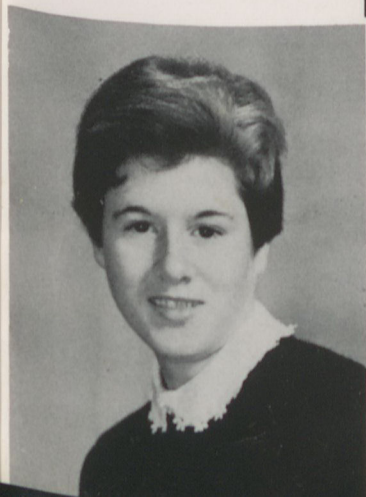


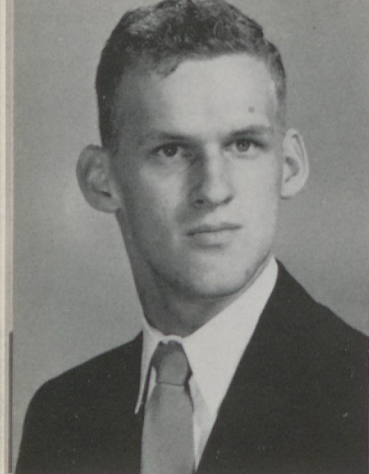
NANCY DOSS
Canton, Georgia
Alpha, Day Student Organization, Tallulah.



CARLOS DYER
Cartersville, Georgia

SARA EDENS
Sugar Valley, Georgia
Delta, F.T.A., Choctaw, B.S.U.

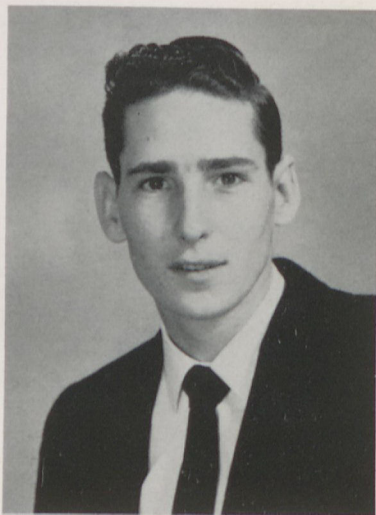




WAYNE EUBANKS

Woodstock, Georgia

Haygood, Mohawk, Glee Club, Boys'
Quartet, Dramatic Club, B.S.U.



AL FOSSETT

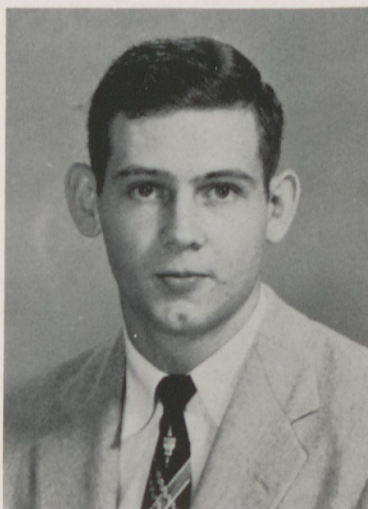
Cartersville, Georgia

Haygood, Seminole, M.S.M., Glee Club,
Cherokee Phoenix.

HARRY GARRETT

Canton, Georgia

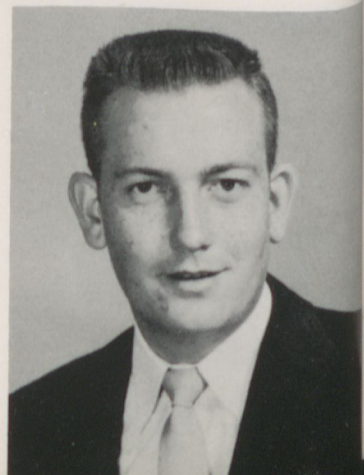
Seminole, Pierce, Student Council, Min-
isterial Association, Pi Epsilon, Day
Student Organization.



VERNON GORDON

Dalton, Georgia

Mohawk, Haygood, Dramatic Club,
Hiltonian, B.S.U.



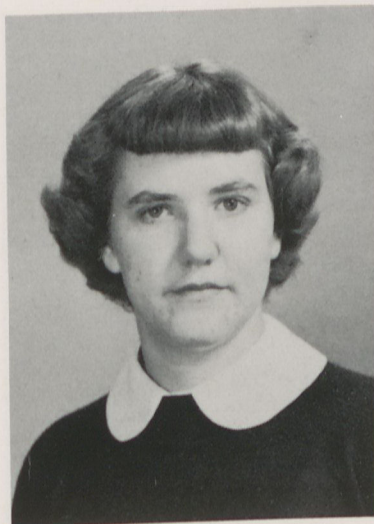
JOHN HAGLER
Chipley, Georgia

Haygood, Mohawk, Glee Club, Student
Council, M.S.M., Boys' Quartet.



PATSY HARRIS
Ball Ground, Georgia

Delta, Tallulah, Glee Club, Girls' Quintet, B.S.U.

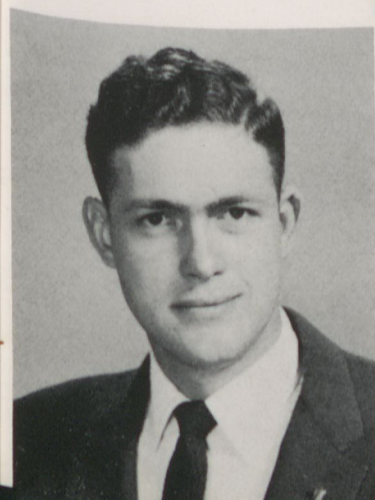


LILLIE MAE HELTON
Clermont, Georgia

Cherokee Phoenix, M.S.M., Delta,
Choctaw, Pi Epsilon, Dramatic Club.

OLIN HERNDON
Hartwell, Georgia

M.S.M., Pierce, Ministerial Association,
Seminole, I.R.C., Dramatic Club, Inter-
collegiate Debate Team.





ANITA HOLBROOK

Austell, Georgia

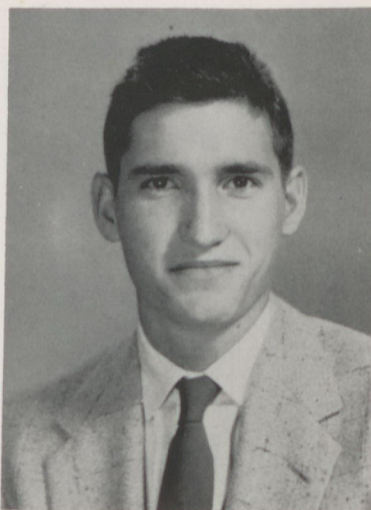
Alpha, Phi Theta Kappa, Pi Epsilon,
Cherokee Phoenix, Glee Club, M.S.M.,
Student Council, Religious Life Council.



BRYCE HOLCOMB

Ball Ground, Georgia

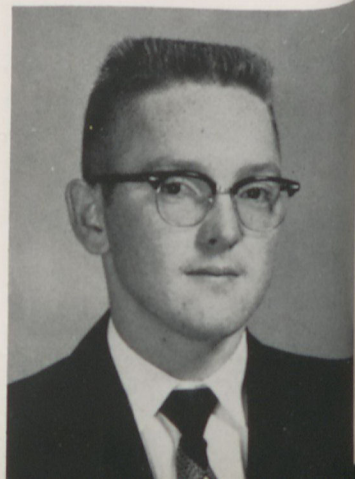
Haygood, I.R.C., Pi Epsilon, Day Student Organization, Seminole.



TOMMY HOLMES

Canton, Georgia

Haygood, Phi Theta Kappa, Pi Epsilon,
Hiltonian, Student Council, B.S.U., Day
Student Organization, Mohawk.



CHARLES INGRAM, JR.

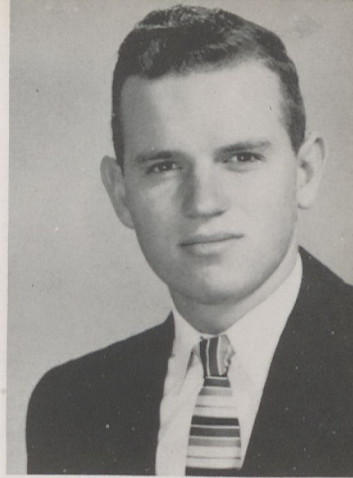
Ball Ground, Georgia

Haygood, I.R.C.

CURTIS INGRAM

Dallas, Georgia

Haygood, Seminole, B.S.U., Pi Epsilon,
Student Council.



ANNE KAY

Powder Springs, Georgia

Delta, Ministerial Association, Choctaw,
M.S.M., Cherokee Phoenix, Glee Club.



WILMA LANGSTON

Roswell, Georgia

Alpha, Tallulah, Cherokee Phoenix,
M.S.M.

RONNIE LIFSEY

Griffin, Georgia

Haygood, Seminole, Glee Club, M.S.M.,
Pi Epsilon, Student Council, Hiltonian,
Religious Life Council.





EDITH MURPHY

Jasper, Georgia

F.T.A., Delta, Ministerial Association,
Choctaw, B.S.U.



MARGARET NELSON

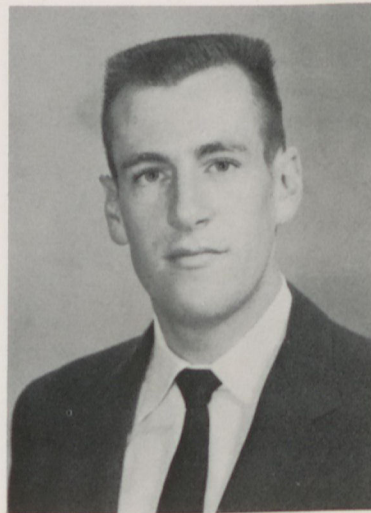
Woodland, Georgia

B.S.U., Delta, Tallulah, Pi Epsilon, Phi
Theta Kappa, Religious Life Council,
Student Council, F.T.A., Ministerial
Association.

GRADY PALMOUR

Trion, Georgia

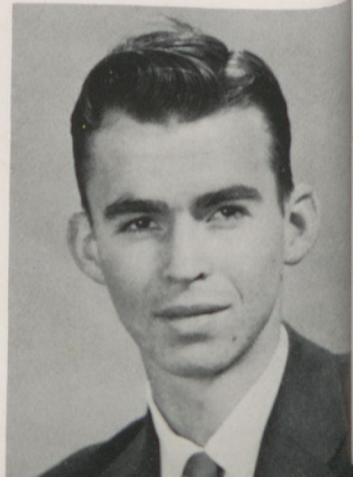
Pierce, Mohawk, M.S.M., Ministerial
Association.



THOMAS H. PELT

Cypress, Florida

Pierce, Seminole, Ministerial Associa-
tion, Glee Club, M.S.M.



CARROLL PENDLEY

Canton, Georgia

Haygood, B.S.U., Cherokee Phoenix,
Day Student Organization, F.B.L.A.,
Mohawk.



NELLE PONDER

Waleska, Georgia

Glee Club, Dramatic Club, Alpha,
Ministerial Association, M.S.M., Pi
Epsilon, I.R.C., Day Student Organiza-
tion, Hiltonian, Tallulah.



NELSON RICHARDSON

Hartwell, Georgia

Pierce, M.S.M., Glee Club, Dramatic
Club, Student Council, Boys' Quartet,
Mohawk.

JANE ROBERTS

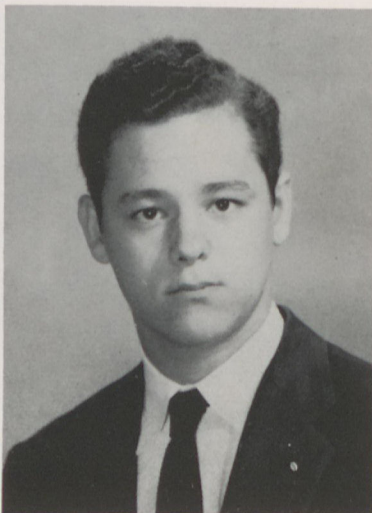
Nashville, Georgia

Alpha, Blue and Gold, Student Council,
Hiltonian, Cherokee Phoenix, M.S.M.,
Pi Epsilon, Tallulah.





MAXINE ROBERTS
Calhoun, Georgia
Alpha, Tallaluah, F.T.A., B.S.U.



JIMMY ROBERTS
Atlanta, Georgia
Glee Club, Boys' Quartet, Ministerial
Association, Hiltonian, Seminole, Hay-
good, Student Council, F.T.A.

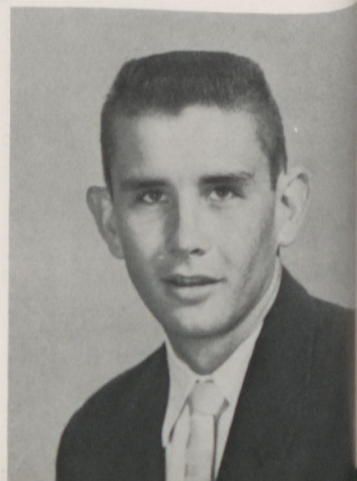
DIANNE RUFFIN
Thomaston, Georgia

Alpha, Ministerial Association, Choc-
law, Pi Epsilon, Phi Theta Kappa,
Cherokee Phoenix, Student Council,
Glee Club.



ED SANDERLIN
Leary, Georgia

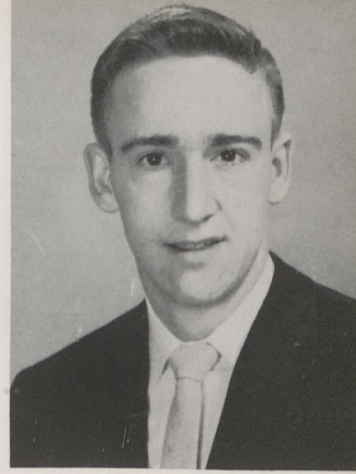
Haygood, Student Council, Glee Club,
Seminole.



HAROLD SAMS

Canton, Georgia

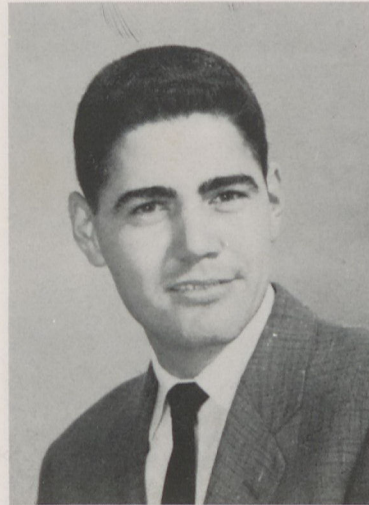
Mohawk, Haygood, Pi Epsilon, Day
Student Organization.



GENE SCARBOROUGH

Barnesville, Georgia

Student Council, Haygood, F.T.A.,
Seminole, M.S.M., Cherokee Phoenix,
Pi Epsilon, Phi Theta Kappa.



SARA SCROGGS

Kennesaw, Georgia

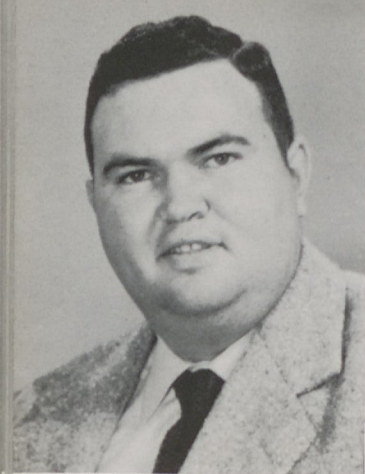
Alpha, B.S.U., Glee Club, F.T.A.,
Hiltonian, Tallulah, Religious Life
Council.

EMELYN SLATON

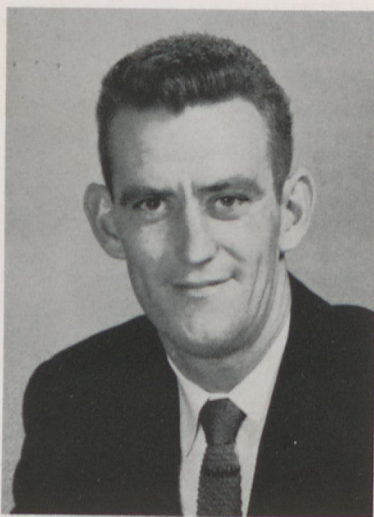
Royston, Georgia

M.S.M., Alpha, Tallulah, F.T.A., Blue
and Gold, Pi Epsilon, B.S.U., Cherokee
Phoenix, F.B.L.A.

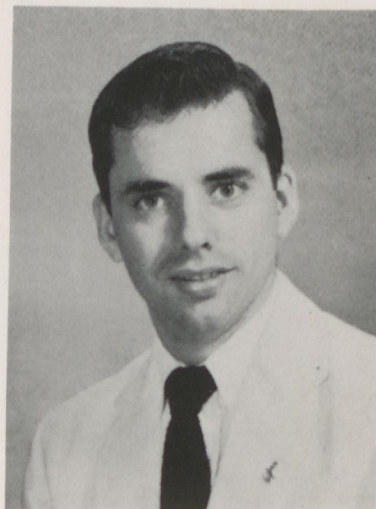




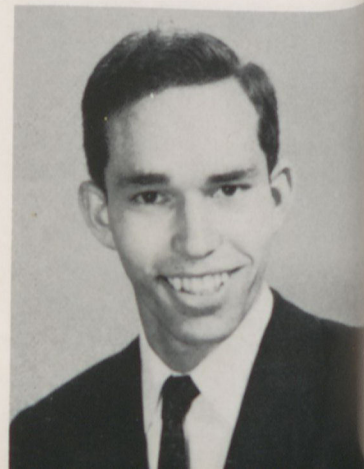
JACK SMITH
Canton, Georgia
Seminole, Haygood, F.B.L.A., Day Student Organization, B.S.U.



WILLIE JO SMITH
Canton, Georgia
Mohawk, Haygood, M.S.M.



JIMMY STEPHENS
Dalton, Georgia
Pierce, Seminole, B.S.U., Ministerial Association.



RALPH TALTON
Atlanta, Georgia
Student Council, Pierce, Seminole, I.R.C., Ministerial Association, Pi Epsilon, Phi Theta Kappa, Cherokee Phoenix, Glee Club, M.S.M., Religious Life Council.

MARY JO THOMPSON

Waleska, Georgia

M.S.M., Religious Life Council, Alpha,
Hiltonian, Student Council, F.T.A.,
Ministerial Association, Tallulah, Day
Student Organization.



ROSETTA WILLIAMS

Conyers, Georgia

Alpha, F.T.A., Cherokee Phoenix, Min-
isterial Association, Tallulah.



MILDRED WOOD

Thomson, Georgia

Alpha, Glee Club, Ministerial Associa-
tion, Student Council, M.S.M., Dramatic
Club, Choctaw.



CLASSROOM ACTIVITIES

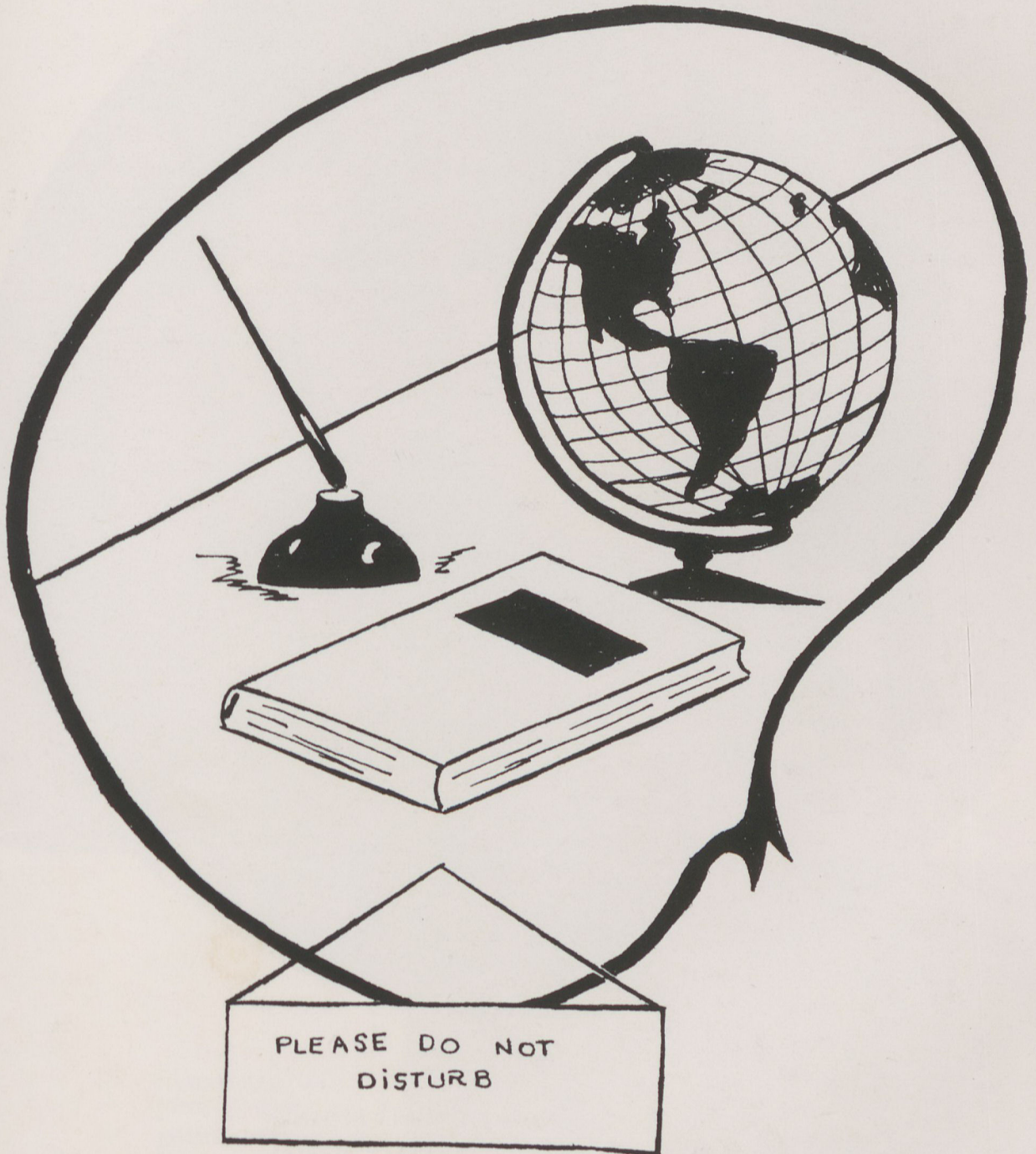


The students see microscopic life in biology lab as Miss Runyon supervises.



Reinhardt students prepare for future business life under Mrs. Cullens in the commercial department.

FRESHMEN



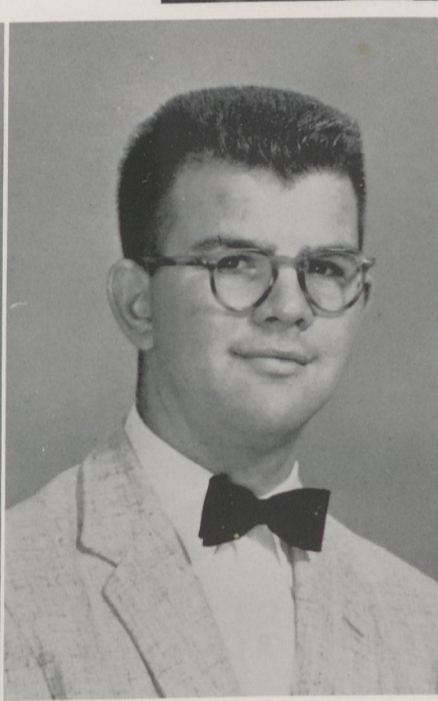
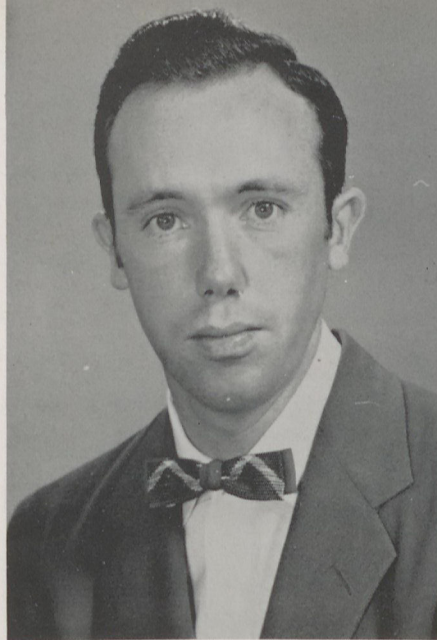
FRESHMAN OFFICERS



President EVERETT EUBANKS
Vice President KELLY HARDIN
Secretary MARGUERITE THIGPEN
Treasurer EULEE BLED SOE
Project Chairman DENNIS HARRIS
Class Sponsor MR. RONALD LEE

GILBERT ADAMS
Carnesville, Georgia

GWENN ALLEY
Adel, Georgia

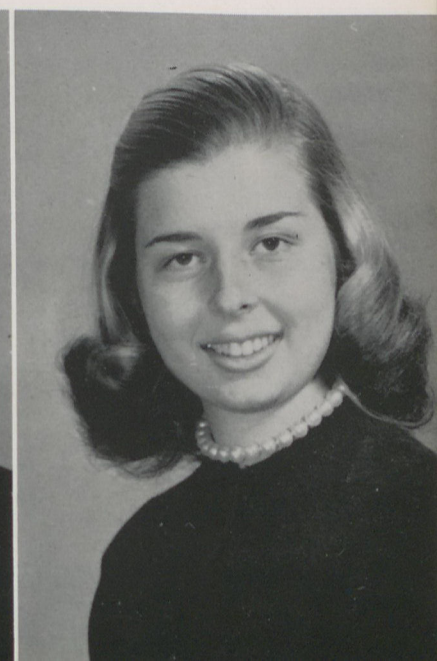
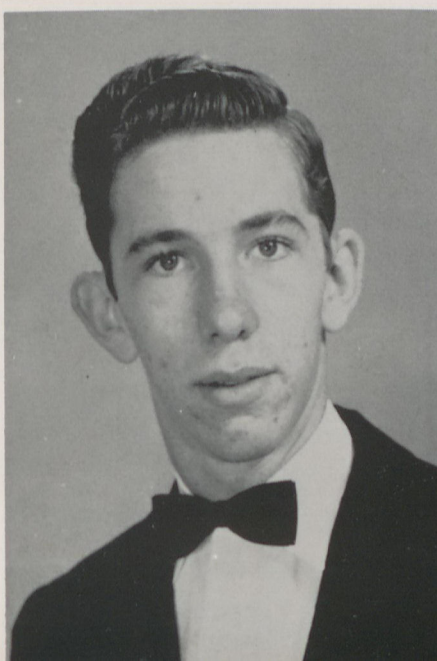


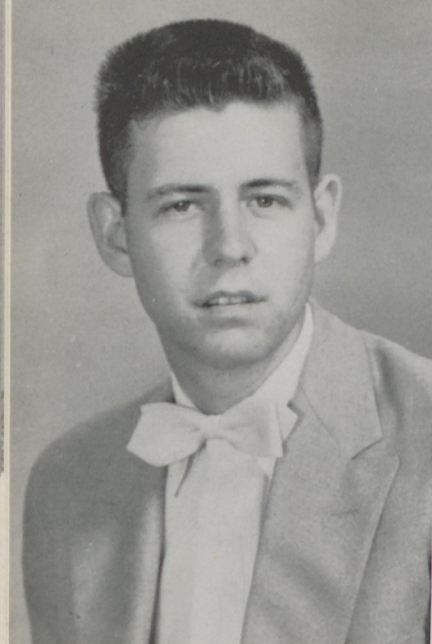
MARGARET ALLISON
Ball Ground, Georgia

DONALD AUSTIN
Fairmount, Georgia

LAMAR BARTON
Canton, Georgia

JIMMIE BELL
Canton, Georgia



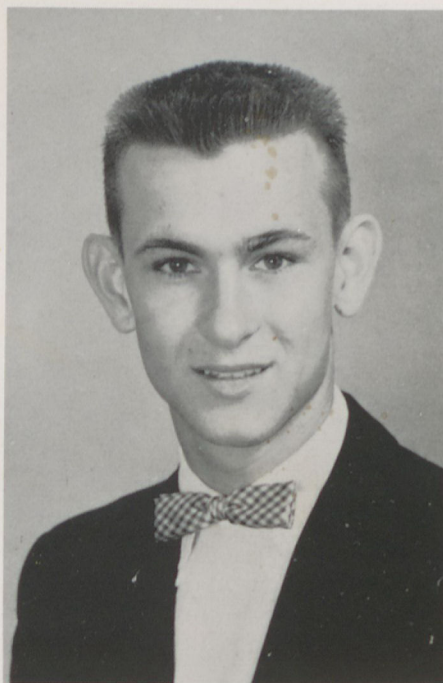


MELVIN BENTLEY
Temple, Georgia

JANICE BLALOCK
Waleska, Georgia

EULEE BLEDSOE
McDonough, Georgia

SYLVIA BROWN
Lithia Springs, Georgia

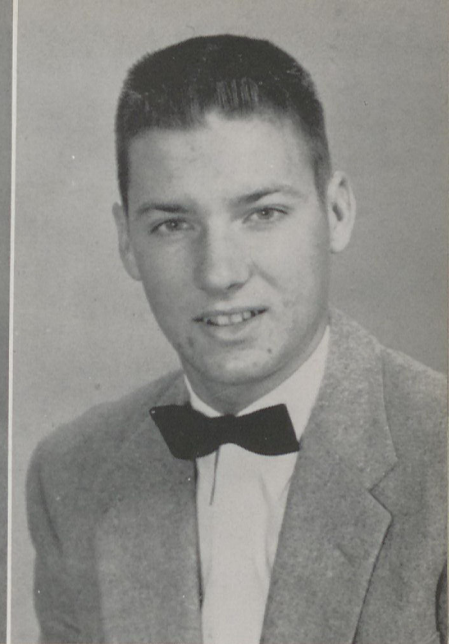


FAYE BRYSON
Cartersville, Georgia

MRS. HELEN BURNEY
Canton, Georgia

OZELLA BUTTERWORTH
Woodstock, Georgia

MIKE BUTTS
Chipley, Georgia

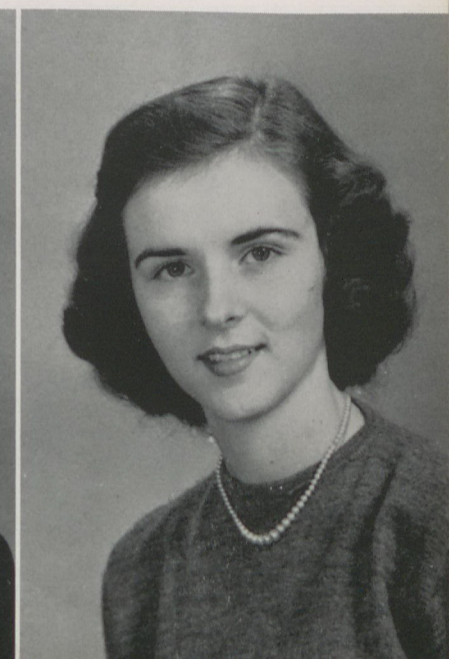


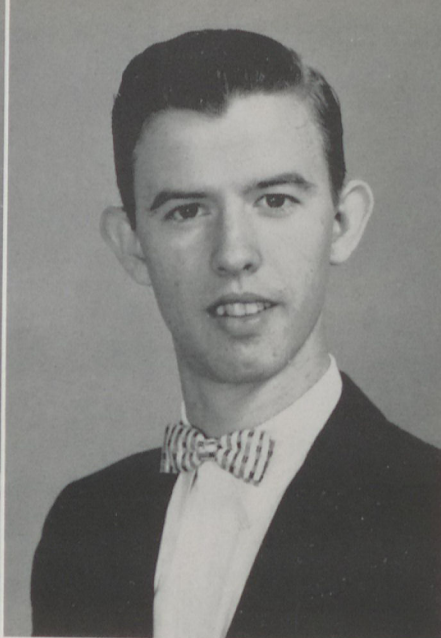
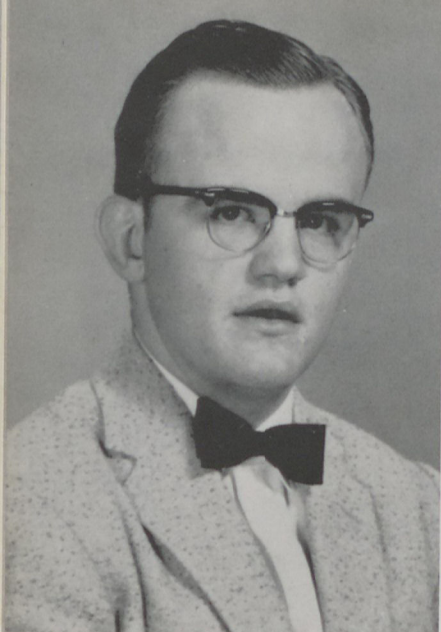
PAULA CAGLE
Waleska, Georgia

ELAINE CLARK
Calhoun, Georgia

FRANK CLINE
Waleska, Georgia

MARTHA DRIVER
Royston, Georgia



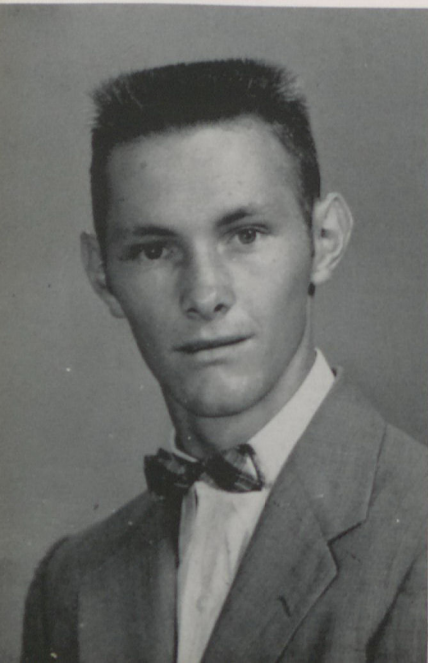
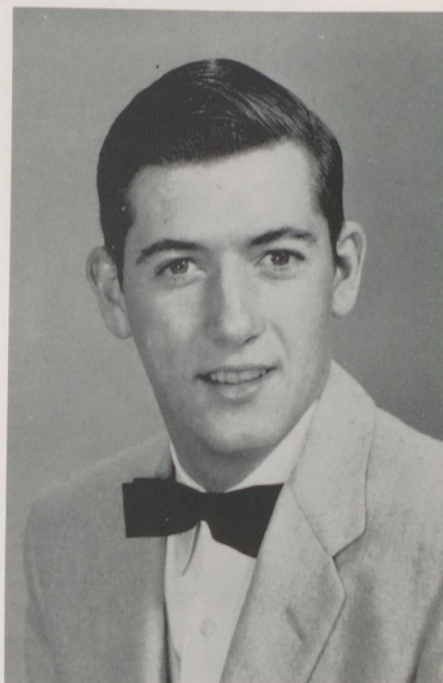


JOHN DALLAS
Smyrna, Georgia

EVERETT EUBANKS
Augusta, Georgia

LAWRENCE FITTS
Canton, Georgia

SYLVIA FOSSETT
Cartersville, Georgia

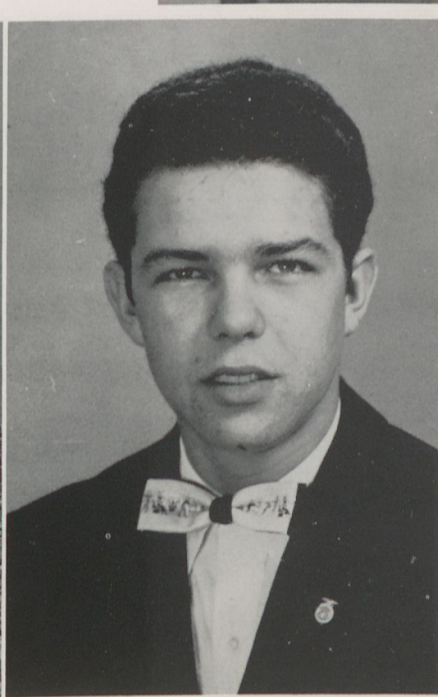
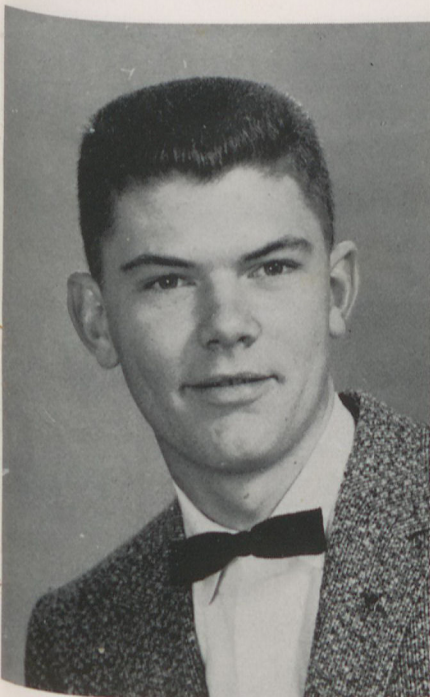


DOUGLAS FREDERICK
Carnesville, Georgia

SHIRLEY GADDIS
Marietta, Georgia

ARLENE GARRETT
Smyrna, Georgia

MARJORIE HANEY
Lawrenceville, Georgia



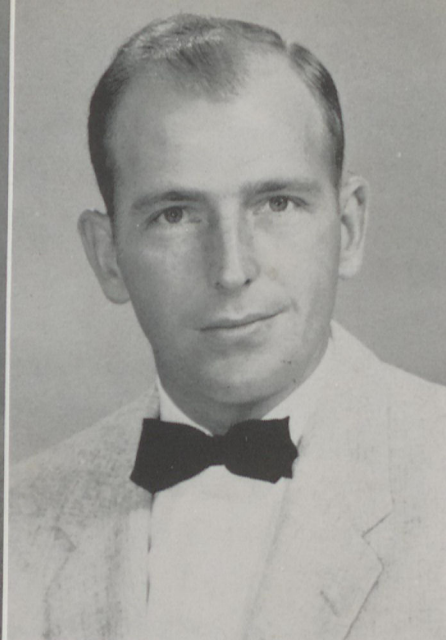
DENNIS HARRIS
Royston, Georgia

JOE CLEVE HARRISON
Harlem, Georgia

LUANNE HAYS
Hyattsville, Maryland

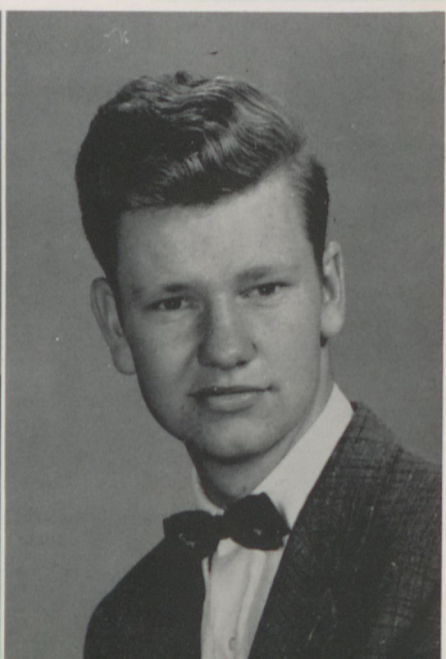
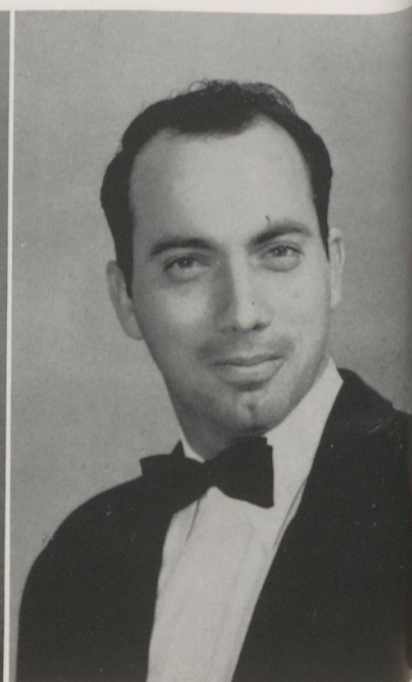
FAYE HODGE
Pitts, Georgia





ANN HUBER
Moultrie, Georgia
RALPH HUDGINS
Leary, Georgia

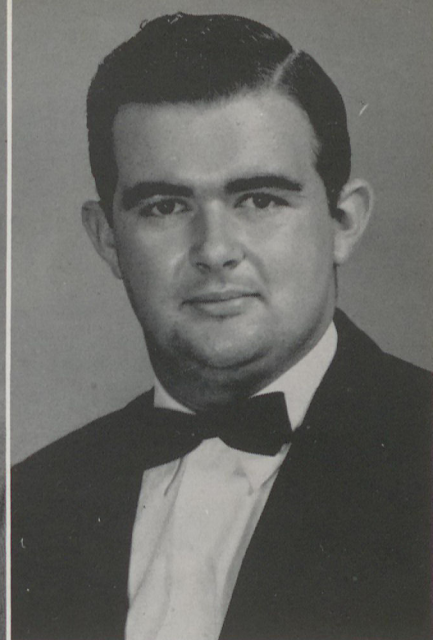
BARBARA JEFFEARS
McDonough, Georgia
KELLY HARDIN
Dalton, Georgia



JOHN LINDER
Atlanta, Georgia
WAYNE LOVELACE
Royston, Georgia

DONNA LONG
Ranger, Georgia

RICHARD LUMPKIN
Barnesville, Georgia

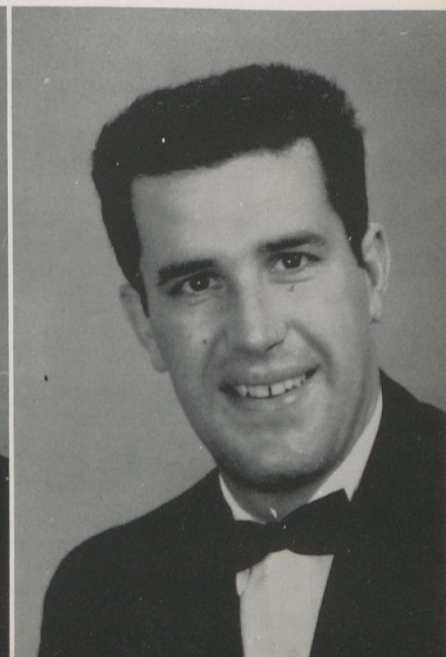
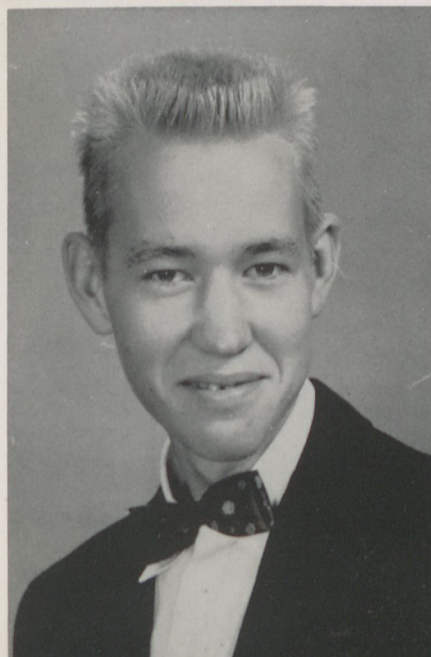


MAYE LYON
Ball Ground, Georgia

SANDRA McAFEE
Carters, Georgia

LEE McCLESKEY
Woodstock, Georgia

BILL McCLURE
Canton, Georgia



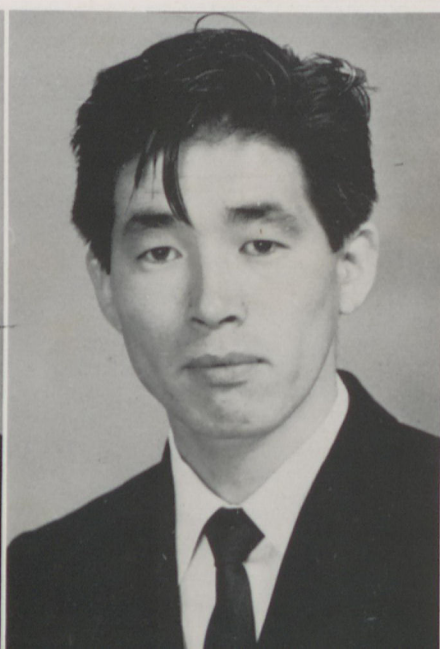
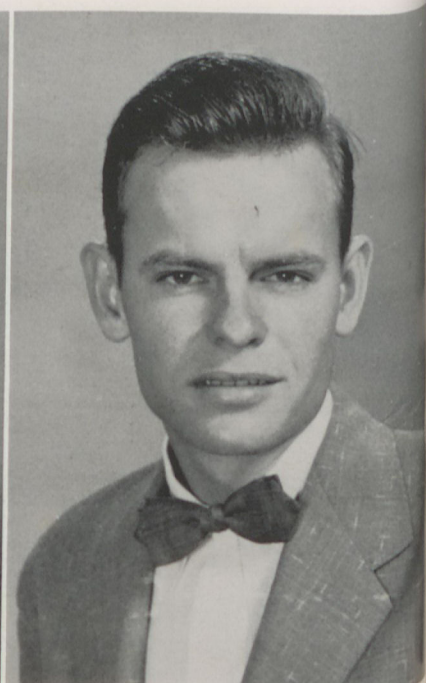


JANICE McCLURE
Canton, Georgia

LILLIAN McFARLAND
Canton, Georgia

MYRNA JEAN MADDOX
McDonough, Georgia

RAY OLIVER
Calhoun, Georgia

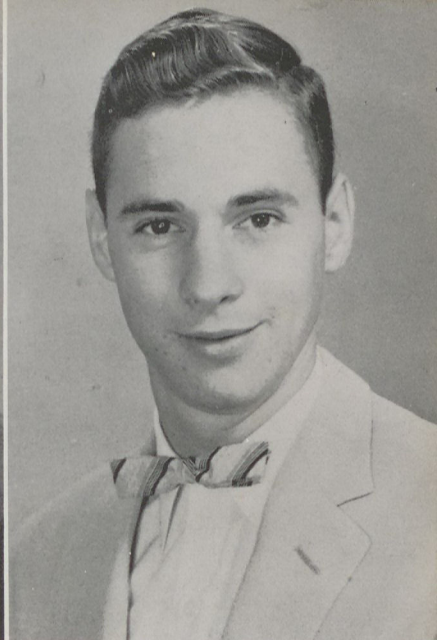


TERESA OWENS
Pitts, Georgia

TONG SOO PAK
Seoul, Korea

JAN PATAT
Dalton, Georgia

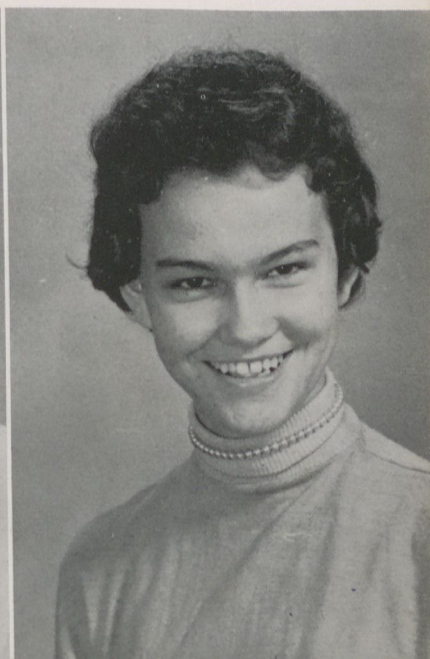
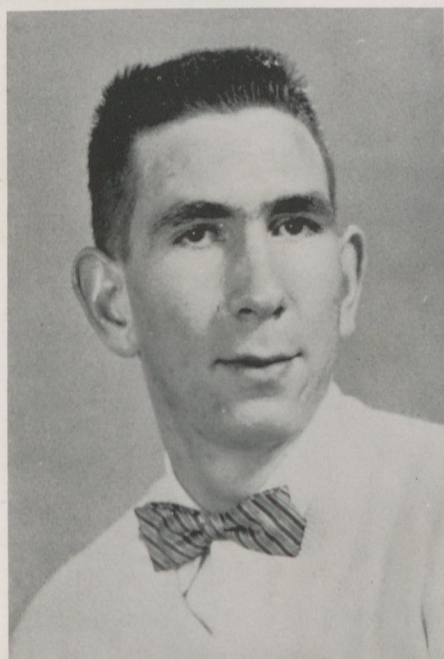
JERRY PATE
Conyers, Georgia



Reception first High
School Weekend.

LARRY JOE PHILLIPS
McCaysville, Georgia

ROLDA POSS
Cedartown, Georgia



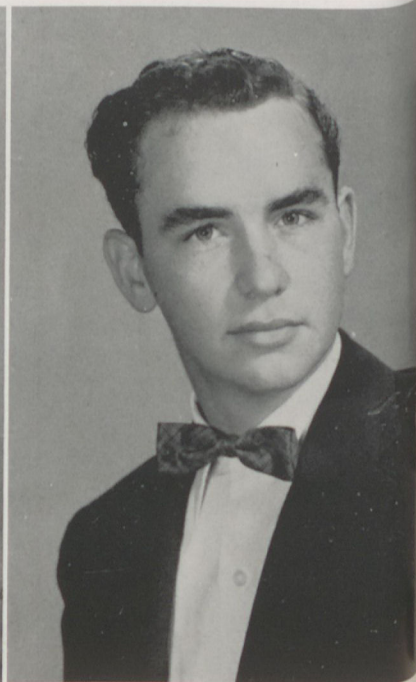


PEGGY JO PRIEST
Canton, Georgia

JO ANN REECE
Canton, Georgia

JERRY SANDERS
Franklin, Georgia

JERRY SATTERFIELD
Marietta, Georgia

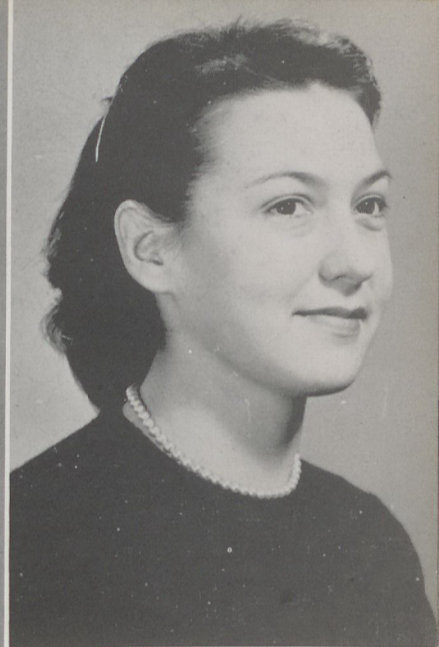
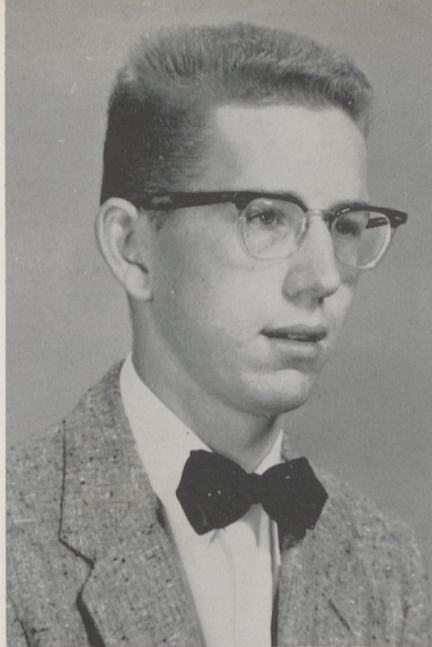


BETTY SMITH
Thomson, Georgia

LLOYD SOUTHERN
Ellijay, Georgia

DAVID STRICKLAND
Royston, Georgia

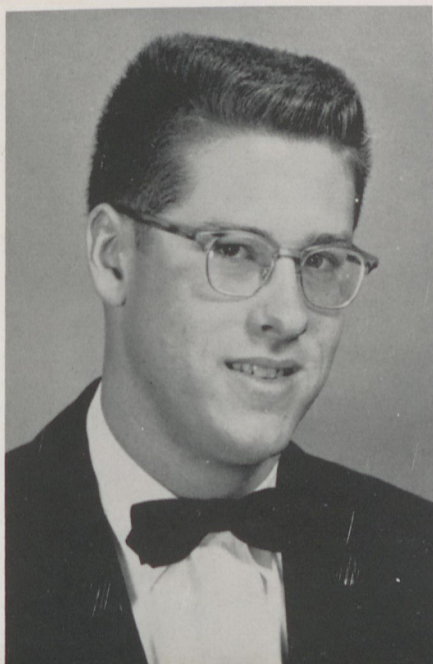
DOROTHY STUTTS
Sparks, Georgia



Reinhardt's three
Musketeers

GEORGE SUTTON
Atlanta, Georgia

MARGUERITE THIGPEN
Sparta, Georgia



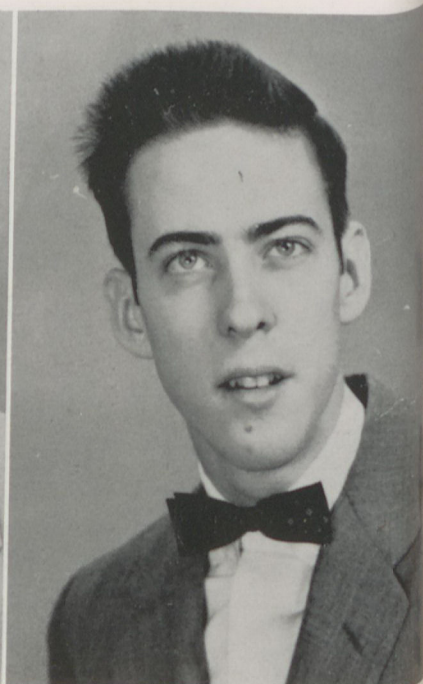
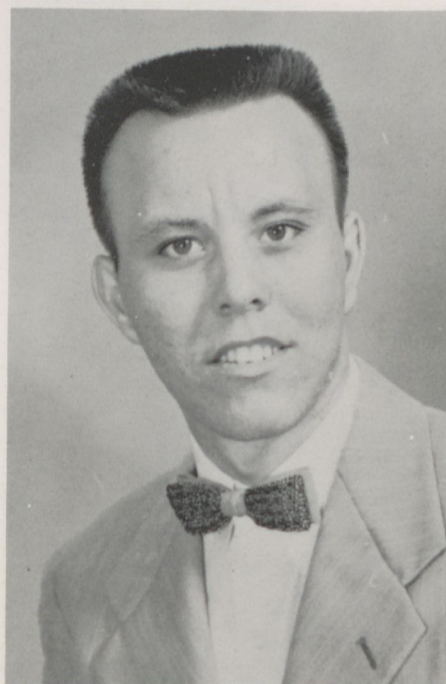


SHIRLEY THOMAS
Franklin, North Carolina

ANNETTE THURMOND
Rabun Gap, Georgia

ROBERT WADDELL
Augusta, Georgia

BOLAND WAGNER
Atlanta, Georgia

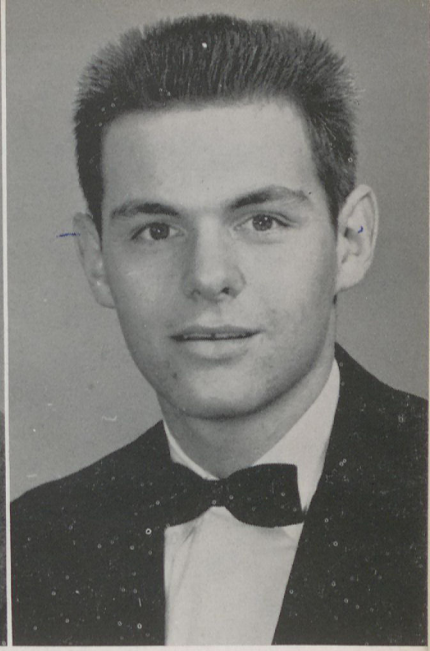
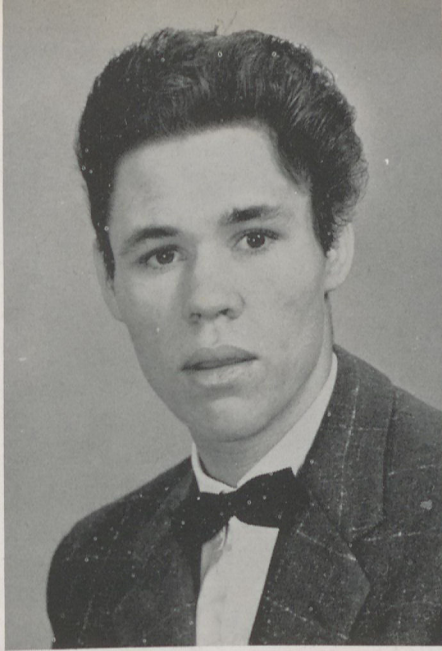


JEANETTE WAKEFIELD
Royston, Georgia

ANN WALKER
Smyrna, Georgia

HERBERT WATKINS
Social Circle, Georgia

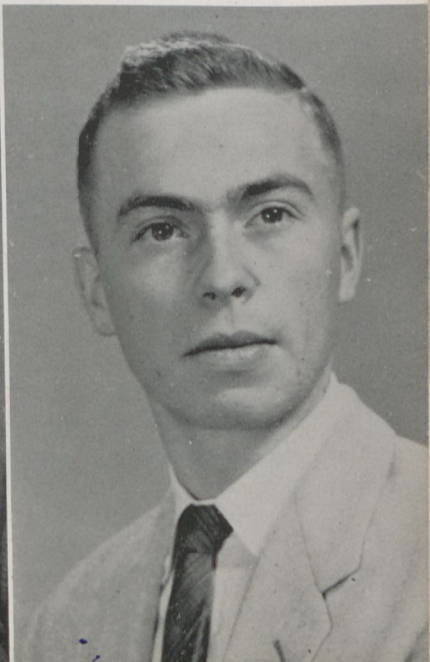
ALTON WHITEMORE
Jefferson, Georgia



Freshmen spend their
first Christmas
together

JO ANN WHITEMORE
Calhoun, Georgia

JOE WILLIAMS
Canton, Georgia



CLASSROOM ACTIVITIES



Miss Adams teaching an English class

At Reinhardt we learn Readin', 'Ritin', and 'Rithmetic.



Miss Shuford teaching an algebra class

ACTIVITIES



THE CHEROKEE PHOENIX STAFF



Mr. Johnson Hagood, adviser; Anita Holbrook, editor; and Barbara Jeffears, assistant.

EDITORIAL STAFF

<i>Editor</i>	Anita Holbrook
<i>Assistant</i>	Barbara Jeffears
<i>Class Editors</i>	Carroll Pendley
	Shirley Gaddis
<i>Organizations</i>	Lillie Mae Helton
	Ozella Butterworth
<i>Favorites</i>	Rosetta Williams
<i>Girls' sports</i>	Lougene Carnes
	Emelyn Slaton
<i>Boys' sports</i>	Ben Bryant
	Ralph Talton
<i>Story of the Year</i>	Gwen Alley
	Dot Stutts
<i>Art Editor</i>	Voncile Compton
<i>Assistant</i>	Larry Phillips
<i>Photographers</i>	Ralph Talton
	John Dallas
<i>Typist</i>	Jeanette Wakefield
<i>Snapshots</i>	Jane Roberts



Seated: Lillie Mae Helton, Ozella Butterworth, Gwen Alley, Jane Roberts, and Jeanette Wakefield.
Standing: John Linder, Ben Bryant, Shirley Gaddis, Rosetta Williams, Emelyn Slaton, Lougene Carnes, Voncile Compton, Ralph Talton, John Dallas, and Larry Phillips.

THE CHEROKEE PHOENIX STAFF

BUSINESS STAFF

Business Manager Gene Scarborough
Assistant Marguerite Thigpen
Advertisements Betty Smith, Dianne Ruffin,
Wilma Langston, Jerry Satterfield, and
Dennis Harris.

The Cherokee Phoenix is Reinhardt's annual. It is published during the spring quarter.

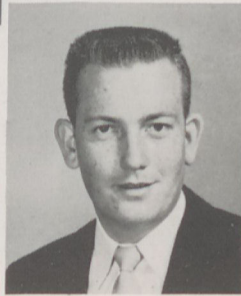
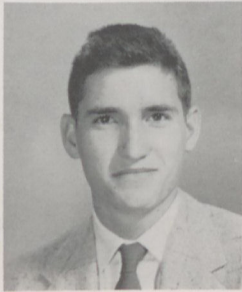


Miss Virginia Shuford, faculty advisor;
Gene Scarborough, business manager;
and Marguerite Thigpen, assistant.



Seated: Betty Smith, Dianne Ruffin, and Wilma Langston. Standing: Jerry Satterfield and Dennis Harris.

THE REINHARDT



MISS MILLER, *Advisor*

Tommy Holmes, Editor Vernon Gordon, Business Manager

EDITORIAL STAFF

Seated: Tommy Holmes and Jo Ann Whittemore. Standing: Jimmy Stevens, Ronnie Lifsey, Luanne Hays, Mary Jo Thompson, Larry Philips, Jimmy Roberts, and Nelle Ponder.



HILTONIAN STAFF

The Hiltonian is a quarterly paper edited by the students under the supervision of faculty advisor. The purpose of the paper is to give the students some knowledge of journalism and to picture to the students and friends of the school the different actions of the student body.

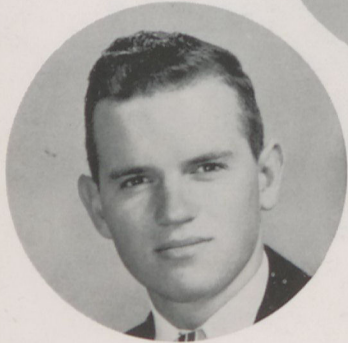
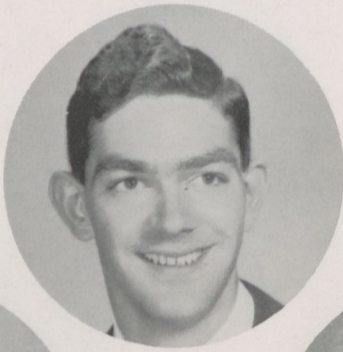


BUSINESS STAFF AND REPORTERS
 Seated: Vencie Compton. Standing: Richard Lumpkin, John Dallas, Vernon Gordon, Jeanette Wakefield, Janice Blalock, and Jimmie Bell.



STUDENT COUNCIL

The Student Council is composed of the presidents of all the organizations at Reinhardt. The Council is responsible for the Student Handbook, the beginnings of Student Government, and the Honor System.



MR. ROGER BROWN, *advisor*

Curtis Ingram, president Jane Roberts, vice president



Seated: Mr. Rober Brown, Anita Holbrook, Curtis Ingram, Jane Roberts, and Everett Eubanks. Second row: Mildred Wood, Mary Sue Bannister, Dianne Ruffin, Mary Jo Thompson, Martha Burgess, Nelle Ponder, and Margaret Nelson. Third row: Vernon Gordon, Jimmy Roberts, Gene Scarborough, Harry Garrett, Ralph Talton, Charles Cline, Ed Sanderlin, Tommy Holmes, Richard Lumpkin, John Hagler, and Douglas Fredrick.

PHI THETA KAPPA



Miss Virginia Shuford, faculty advisor, Anita Holbrook, Tommy Holmes, Margaret Nelson, and Charles Cline.

The Theta Mu Chapter of Phi Theta Kappa is the national honorary society on the Reinhardt campus. To become a member, a student must be in the upper ten per cent of the student body. The faculty votes on new members.

PI EPSILON



Seated: Voncile Compton, Dianne Ruffin, Lillie Mae Helton, and Nelle Ponder. Standing: Miss Virginia Shuford, faculty advisor, Gene Scarborough, Anita Holbrook, Ralph Talton, Emelyn Slayton, Charles Cline, Margaret Nelson, Ronnie Lifsey, Tommy Holmes, and Curtis Ingram.

The Pi Epsilon Honor Society is an organization for students who maintain a "B" average or better. The highlight of the year is the Valentine Sweetheart Banquet.

M. S. M. COUNCIL



First row: Sylvia Brown, Luanne Hays, Donna Chastain, Marguerite Thigpen, Faye Hodge, Jane Roberts, and Martha Driver. Second row: Rev. P. V. Hall, Martha Burgess, Emelyn Slaton, Mary Jo Thompson, Lillie Mae Helton, and Miss Decora Adams. Third row: Eulee Bledsoe, Kelly Hardin, Douglas Fredrick, Dennie Harris, Gene Scarborough, Ronnie Lifsey, Jimmy Roberts, and Donald Austin.

The Methodist Student Movement is composed of all students who attend the Methodist Church.

B. S. U. COUNCIL

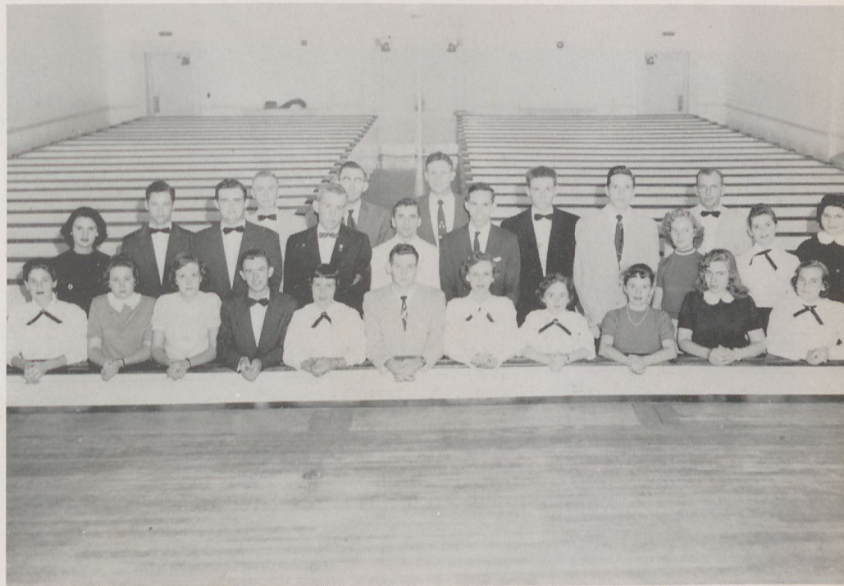
First row: Voncile Compton, Jimmy Stephens, Sara Scroggs, and Margaret Nelson. Second row: Jerry Satterfield, Annette Thurmond, Paula Cagle, and Vernon Gordon.

The Baptist Student Union is an organization for all students who attend the Baptist Church.



MINISTERIAL ASSOCIATION

Kneeling: Myrna Jean Maddox, Effie Anderson, Mary Jo Thompson, Everett Eubanks, Dianne Ruffin, Harry Garrett, Yvonne Adams, Elaine Clark, Arlene Garrett, Edith Murphy, and Mildred Wood. Standing: Luanne Hays, Jimmy Roberts, Richard Lumpkin, Joe Williams, John Linder, Rev. P. V. Hall, Jimmy Stevens, Olin Herndon, Ralph Talton, Alton Whittemore, Hubert Clements, Barbara Jeffears, Ralph Hudgins, Nelle Ponder, and Rosetta Williams.



The Ministerial Association is for all students who have dedicated themselves to some type of Christian work when they finish college.

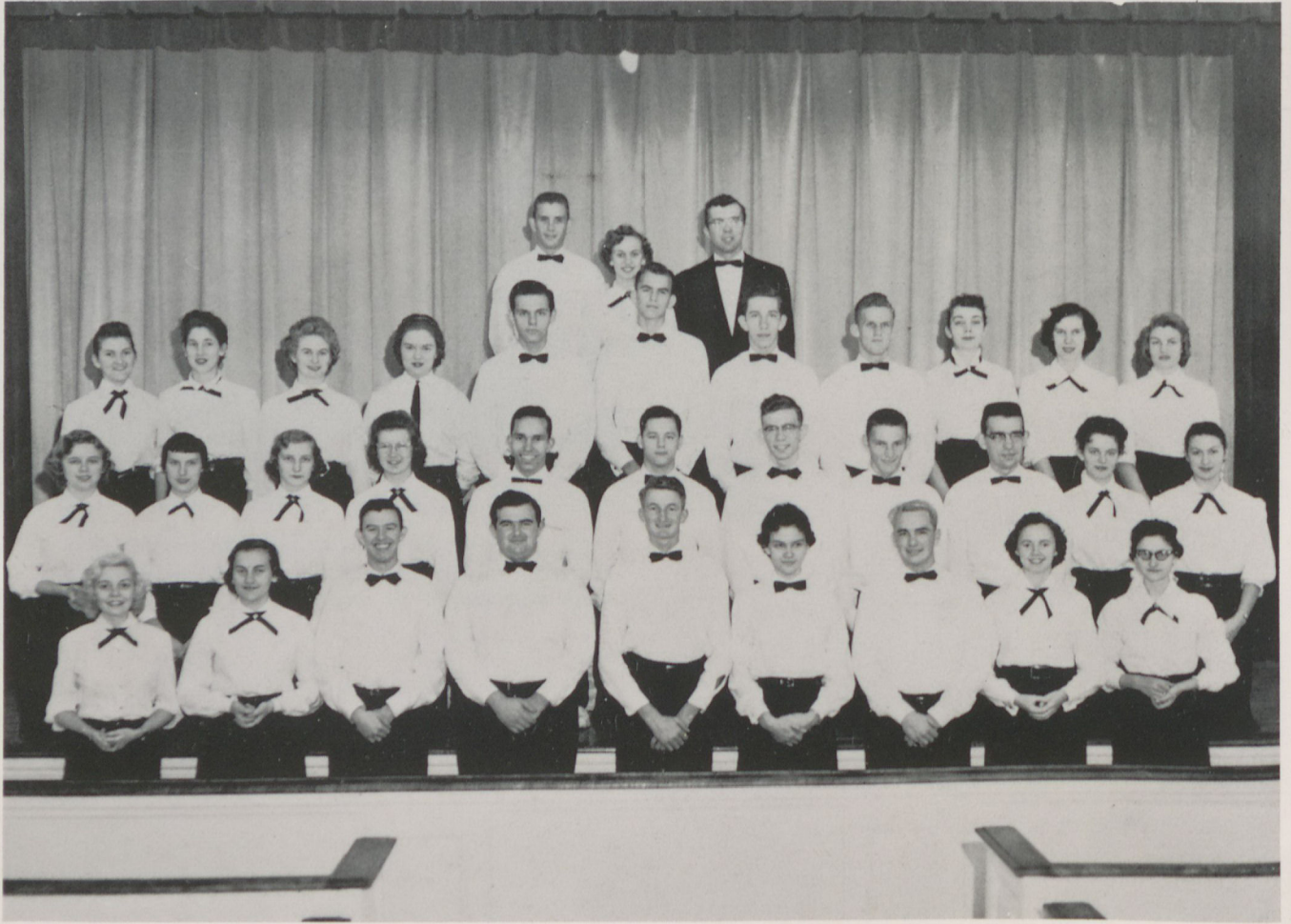
RELIGIOUS LIFE COUNCIL



Seated: Margaret Nelson, Mary Jo Thompson, Sara Scroggs, and Luanne Hays. Standing: Paula Cagle, Mr. J. R. Burgess, Jr., Dennis Harris, Jimmy Stevens, Miss Decora Adams, and Rev. P. V. Hall.

The Religious Life Council is composed of the presidents, vice presidents, deputations chairmen, and faculty advisers of the Methodist Student Movement and the Baptist Student Union. The council co-ordinates religious activities on the campus.

REINHARDT COLLEGE GLEE CLUB



First row: Voncile Compton, Mildred Wood, Everett Eubanks, Richard Lumpkin, Nelson Richardson, Roldà Poss, Jerry Satterfield, Patsy Harris, and Mary Sue Bannister. Second row: Margeurite Thigpen, Dianne Ruffin, Maye Lyon, Martha Burgess, Ralph Talton, Jimmy Roberts, Charles Cline, Douglas Frederick, Ronnie Lifsey, Janice Blalock, and Dot Stutts. Third row: Nelle Ponder, Myrna Jean Maddox, Ann Walker, Jan Patat, Alton Whittemore, Tommy Pelt, Lamar Barton, Wayne Eubanks, Anne Kay, Teresa Owens, and Paula Cagle. Fourth row: Ed Sanderlin, Yvonne Adams, and Mr. Ronald Lee.

The Glee Club represents Reinhardt each winter and spring on television and at churches and schools throughout Georgia. One of the important events of the year is the Spring Concert, which is held in May.

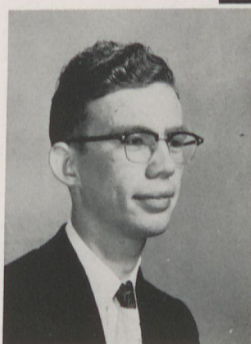


QUINTET

Mr. Ronald Lee, Patsy Harris,
Paula Cagle, Martha Burgess,
Maye Lyon, and Nelle Ponder.



DIRECTOR
Mr. Ronald Lee



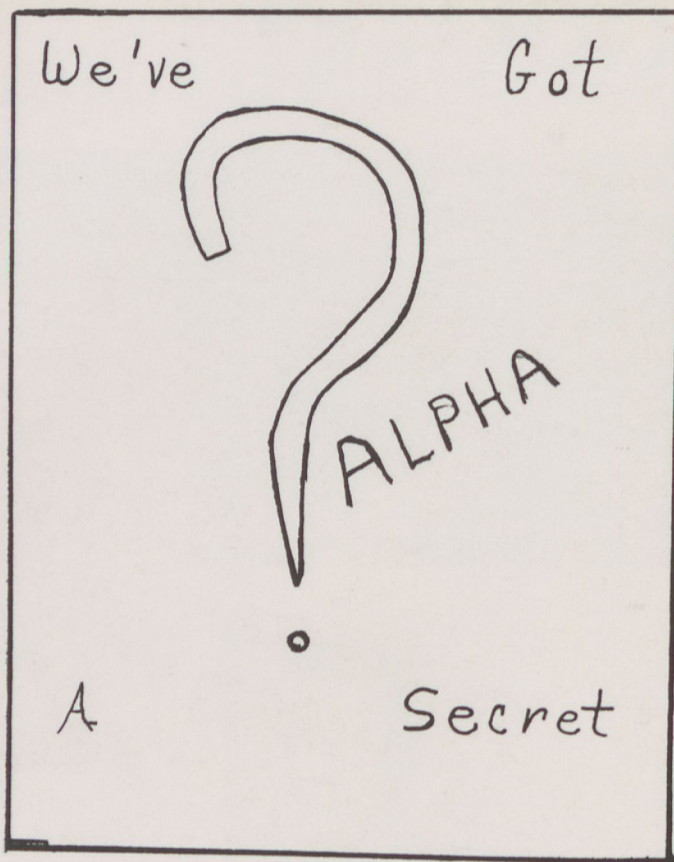
ACCOMPANISTS
Charles Cline
Marguerite Thigpen

QUARTET

Mr. Ronald Lee, Everett Eubanks, Rolda Poss, Jimmy Roberts, and John Hagler.

Singing bass winter quarter was Wayne Eubanks, and spring quarter, Ronnie Lifsey.





Alpha invitation party.



Alpha invitation party.

COLORS:
Green and gold
FLOWER:
Jonquil



DEBATE SPEAKERS
Donna Long, Betty Smith, and
Marguerite Thigpen.

PHI ALPHA LITERARY SOCIETY



First row: Dianne Ruffin, Marguerite Thigpen, Betty Smith, Lougene Carnes, and Jimmie Bell. Second row: Mildred Wood, Yvonne Adams, Effie Anderson, Vencie Compton, Sara Scroggs, and Janice McClure. Third row: Ann Walker, Sylvia Brown, Jo Ann Whittemore, Janice Blalock, Jeanette Wakefield, and Peggy Jo Priest. Fourth row: Anita Holbrook, Gwenn Alley, Mary Sue Bannister, Luanne Hays, Paula Cagle, Nelle Ponder, Dot Stutts, Jane Roberts, Sandra McAfee, Maxine Roberts, and Billie Broome. Fifth row: Margaret Allison, Lillian McFarland, Wilma Langston, Emelyn Slaton, Rosetta Williams, and Donna Long.

The Phi Alpha Literary Society is one of the girls' societies. They compete against the Deltas in the Spring Debates. Some of their other activities include an invitation party at the beginning of school and participation in the annual Stunt Night. Miss Miriam Runyon is the Alpha sponsor. The Alpha motto is: "To the Stars through Bolts and Bars."

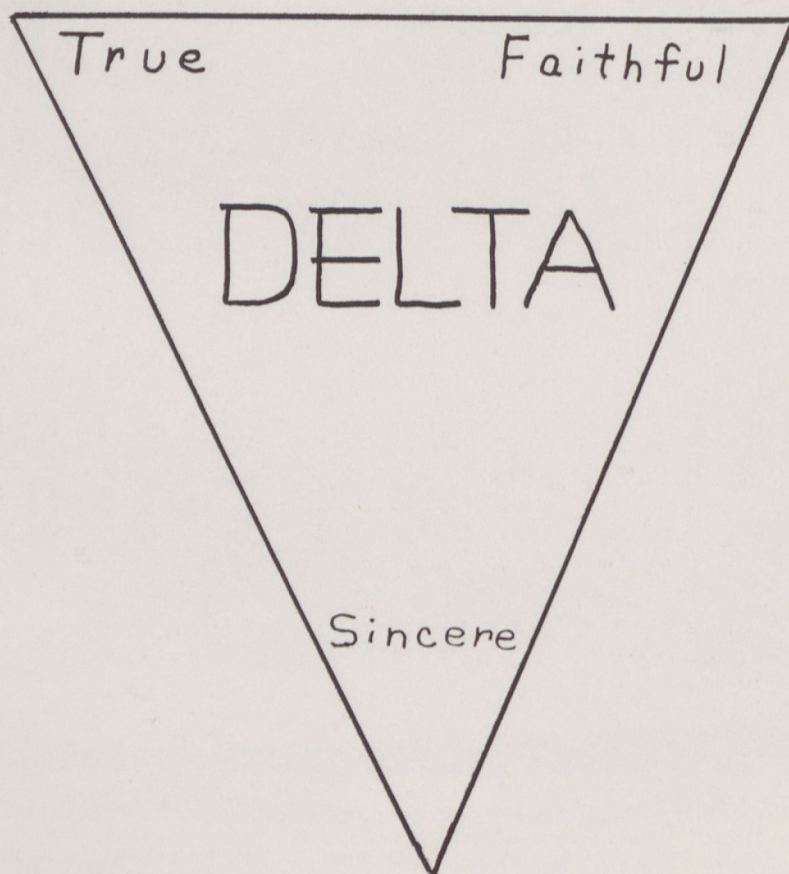


DEBATE SPEAKERS

Shirley Gaddis, Rolda Poss, and Myrna Jean Maddox.



Delta invitation party.



COLORS:
Red and white

FLOWER:
Red carnation

Initiation day



Initiation day



PHI DELTA LITERARY SOCIETY



First row: Miss Ella Cregger, Ozella Butterworth, Arlene Garrett, Shirley Gaddis, Martha Burgess, Rolda Poss, Donna Chastain, Elaine Clark, and Martha Driver. Second row: Jan Patat, Annette Thurmond, Myrna Jean Maddox, Lillie Mae Helton, Teresa Owens, Edith Murphy, Anne Kay, and Maye Lyon. Third row: Barbara Jeffears, Marjorie Haney, Elgaree Davis, Sara Edens, Patsy Harris, Faye Hodge, Margaret Nelson, and Faye Bryson.

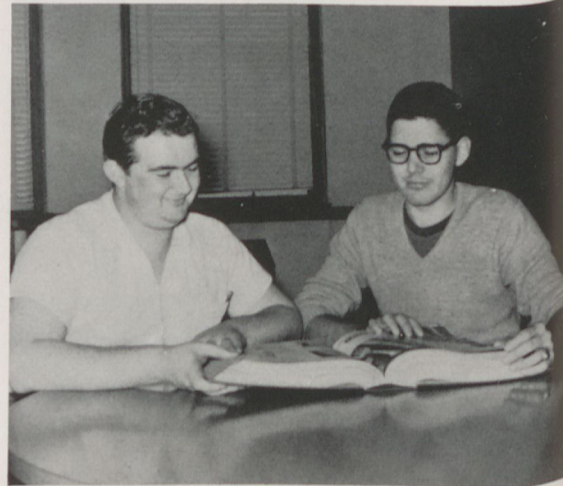
The Phi Delta Literary Society is a girls' society. They give an invitation party, participate in Stunt Night, and compete against the Alphas in the Spring Debates. Miss Ella Cregger is their sponsor. Their motto is: "True, Faithful, and Sincere."



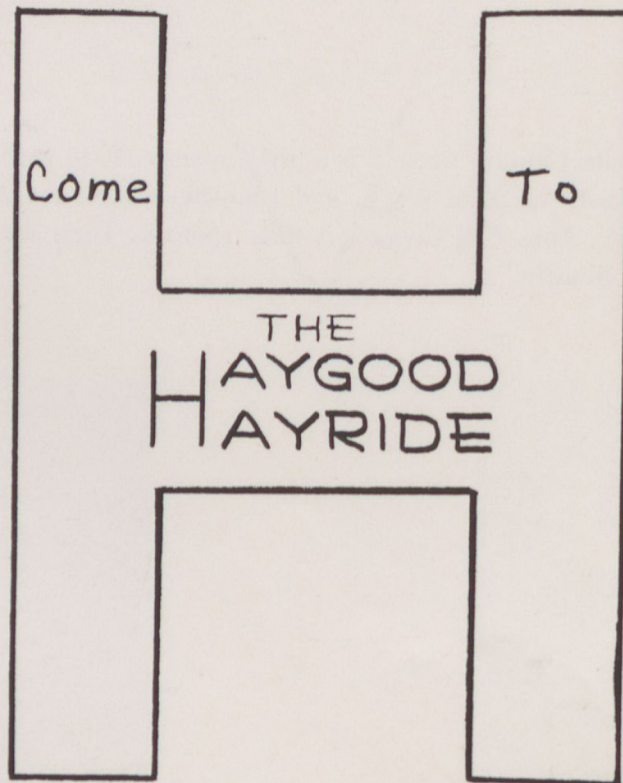
Invitation party



Initiation day



DEBATE SPEAKERS
Richard Lumpkin and Gene Scarborough



HAYGOOD LITERARY SOCIETY



First row: Lamar Barton, Jimmy Roberts, Wayne Eubanks, Harold Sams, Ronnie Lifsey, John Hagler, Frank Conley, Vernon Gordon, Charles Cline, Gene Scarborough, John Dallas, and Ben Bryant. Second row: Mr. Roger Brown, Frank Cline, Lawrence Fitts, Carroll Pendley, Herbert Watkins, John Linder, Ray Oliver, David Strickland, Elwood Sutton, Everett Eubanks, Al Fosset, Jack Smith, Wayne Lovelace, Joe Harrison, Joe Williams, and Frank Ashbaugh. Third row: Boland Wagner, Tommy Holmes, Mike Butts, Jerry Pate, Ed Sanderlin, Dennis Harris, Willie Smith, Lee McClesky, Alton Whittemore, Bryce Holcomb, Curtis Ingram and Richard Lumpkin.

The Haygoods is a society for boys. They give an invitation party each year. They also participate in Stunt Night and the Spring Debates. Their sponsor is Mr. Roger Brown. Their motto is: "In God We Trust."

DON'T
ACT PUNCHY
JOIN THE
PIERCES



Initiation day

COLORS:
Pink and green

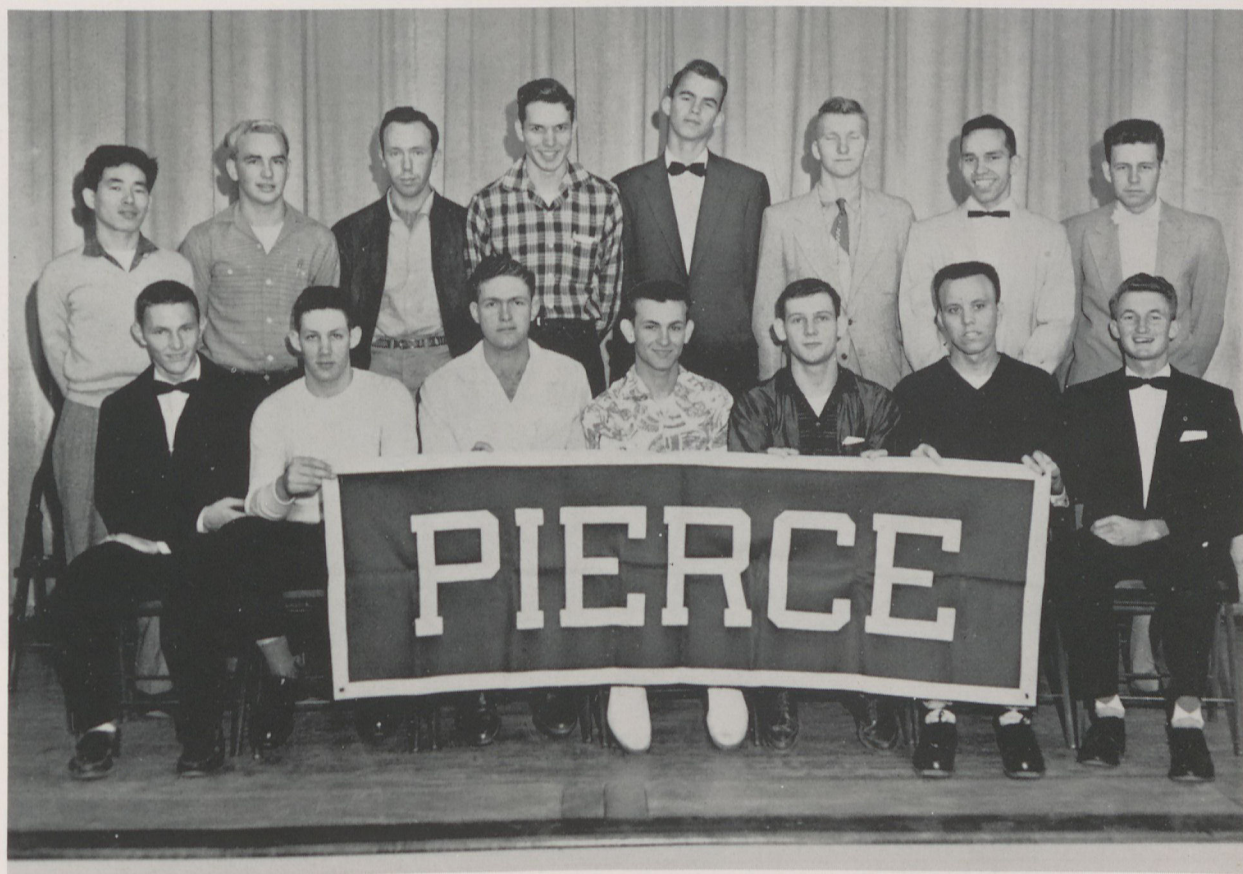


Initiation day

DEBATE SPEAKERS
Ralph Talton and Harry Garrett



PIERCE LITERARY SOCIETY



First row: Douglas Frederick, Jerry Sanders, Olin Herndon, Eulee Bledsoe, Harry Garrett, Robert Waddell, and Nelson Richardson. Second row: Tong Soo Pak, Jerry Satterfield, Gilbert Adams, Hubert Clements, Tommy Pelt, Bobby Hair, Ralph Talton, and Melvin Bentley.

The Pierce Literary Society is a society for boys. They participate in the Spring Debates and Stunt Night. They give an invitation party every year. Their sponsor is Rev. P. V. Hall, and their motto is: "We Have no Trouble with Difficulty, but Difficulty has Trouble with Us."

INTERNATIONAL RELATIONS CLUB



Seated: Charles Cline. Standing: Voncile Compton, Ralph Talton, Bryce Holcomb, Richard Lumpkin, Olin Herndon, John Dallas, Charles Ingram, and Jimmie Bell.

The International Relations Club is composed of students who are interested in learning about the problems of the world and trying to find a way to remedy them. The club sponsors the Intercollegiate Debate Team.

INTERCOLLEGIATE DEBATE TEAM



Jo Ann Whittemore, Richard Lumpkin, Charles Cline, and John Dallas.

The debate team participates in debate tournaments with other colleges each year.



FUTURE TEACHERS OF AMERICA



First row: Lillian MacFarland, Miss Cregger, Luanne Hays, Effie Anderson, Edith Murphy, Voncile Compton and Gwenn Alley. Second row: Margaret Allison, Sandra McAfee, Maxine Roberts, Donna Chastain, Sylvia Brown, Jo Ann Whittemore, and Betty Smith. Third row: Ann Walker, Sara Scroggs, Sara Edens, Marguerite Thigpen, Donna Long, Gene Scarborough, Jeanette Wakefield, Dennis Harris, Larry Phillips, Robert Waddell, Emelyn Slaton, Mary Jo Thompson, Rosetta Williams, and Lougene Carnes.

The Future Teachers of America seeks to acquaint students with the teaching profession and to improve preparation for service. The chapter at Reinhardt sponsors Stunt Night and the May Day activities. Miss Ella Cregger and Mrs. J. R. Burgess, Jr. are co-sponsors.

DRAMATIC SOCIETY



First row: Nelle Ponder, Lillian MacFarland, Sylvia Brown, Voncile Compton, Jo Ann Whittemore, Mildred Wood, and Lillie Mae Helton. Second row: John Dallas, Wayne Eubanks, Luanne Hays, Paula Cagle, Rolda Poss, Charles Cline, and Eulee Bledsoe. Third row: Mr. Johnson Hagood, Nelson Richardson, Alton Whittemore, Hubert Clements, Richard Lumpkin, Jerry Satterfield, and Everett Eubanks.

The Dramatic Society is for all students who are interested in drama. The society presents several plays each year.



FAVORITES





MISS HAYGOOD

Shirley Gaddis

Miss Haygood is elected by the members of the Haygood Literary Society. She will represent the society at the annual Championship Debate, March 30, 1957.



MISS PIERCE
Donna Chastain

Miss Pierce is elected by the members of the Pierce Literary Society. She will represent the society at the annual Championship Debate, March 30, 1957.



QUEEN OF HALLOWEEN
Jane Roberts

Jane was elected by the student body to reign over the Halloween Party sponsored by the S.G.A.



QUEEN OF HEARTS
Jeanette Wakefield

Jeanette was crowned queen at the annual Sweetheart Banquet sponsored by the Pi Epsilon Honorary Society.



MAY QUEEN
Janice Blalock

Janice was elected by popular vote of the student body to reign as queen over the May Day festivities sponsored by the F.T.A.



Anita Holbrook

Miss Reinhardt, who is elected by the student body, is one who best exemplifies the ideals of Reinhardt. She will reign over the Championship Debate on March 30, 1957.

MISS
REINHARDT

SUPERLATIVES



BEST ALL-ROUND

Jane Roberts

Ralph Talton

MOST TALENTED

Voncile Compton
Charles Cline



BEST DRESSED

Yvonne Adams
Al Fossett



MOST POPULAR

Mildred Wood
Vernon Gordon

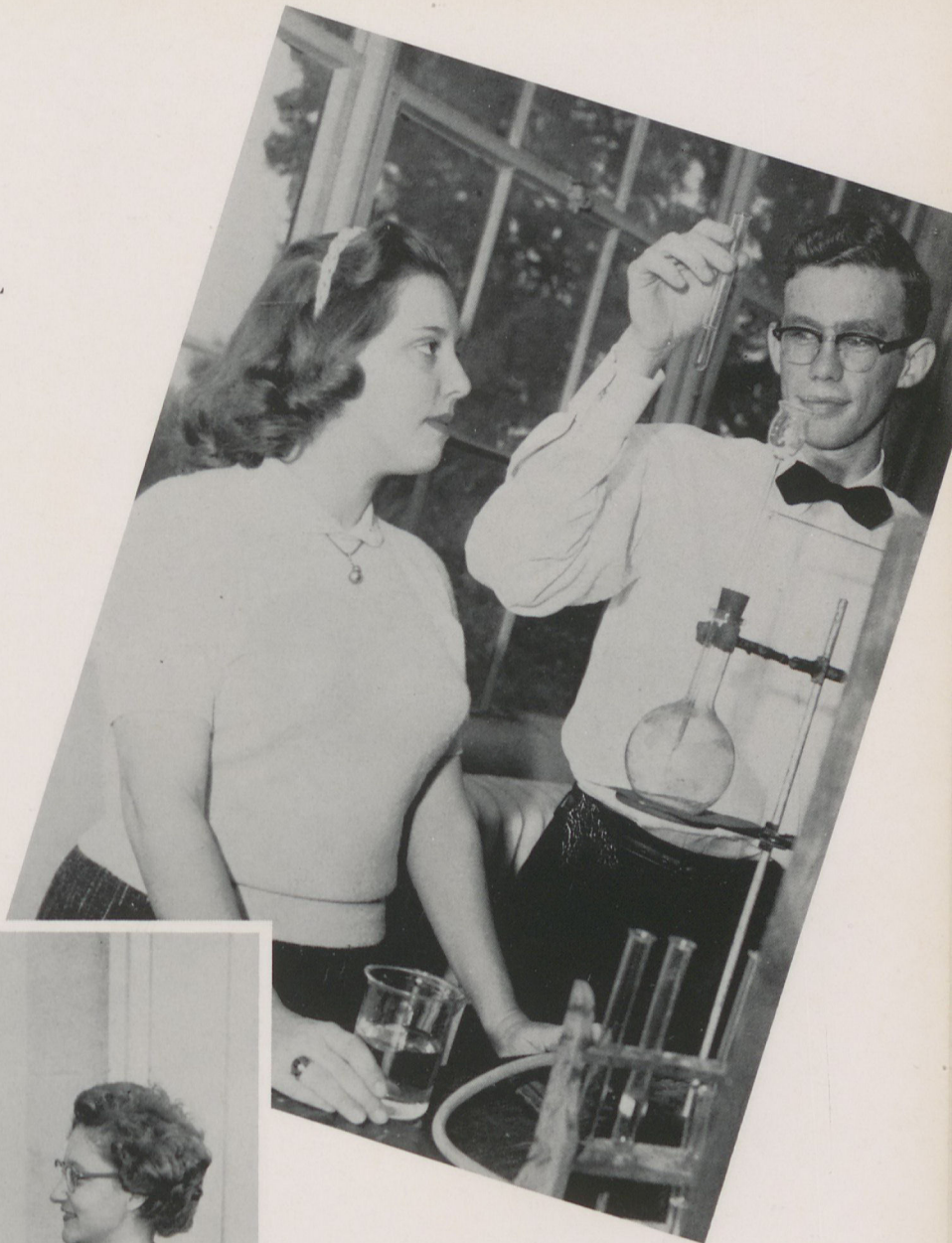
FRIENDLIEST

Sara Scroggs
Ben Bryant



MOST INTELLECTUAL

Margaret Nelson
Charles Cline



MOST ATHLETIC

Mary Sue Bannister
Ed Sanderlin



MOST VERSATILE

Nelle Ponder
Curtis Ingram



WITTIEST

Martha Burgess
Nelson Richardson

MOST BEAUTIFUL

Patsy Harris

MOST HANDSOME

Bryce Holcomb



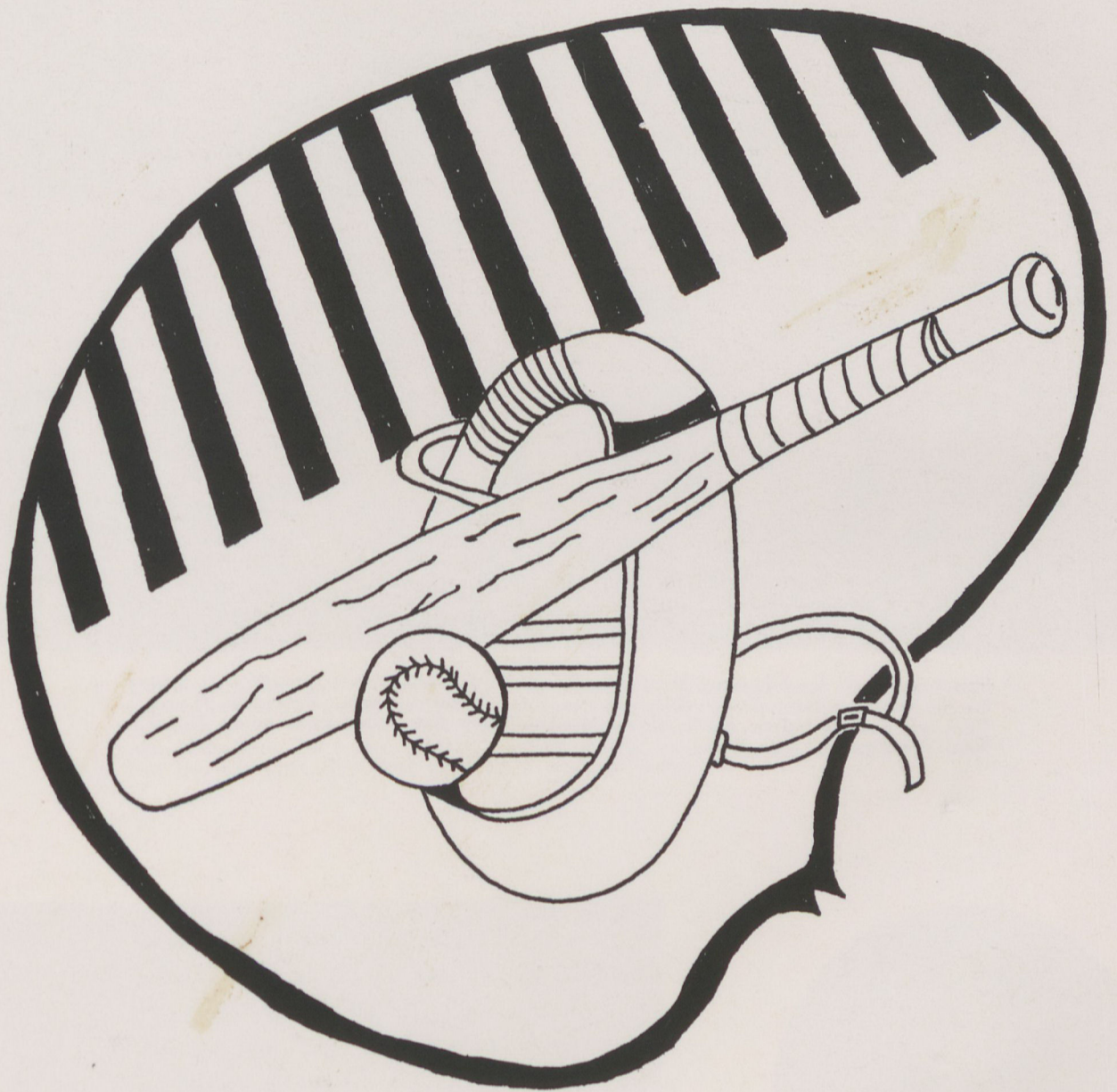
MOST LIKELY TO SUCCEED

Anita Holbrook

Tommy Holmes



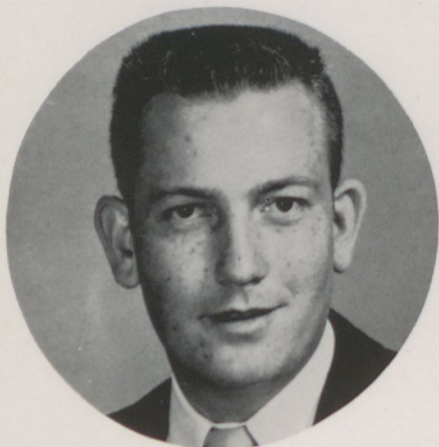
SPORTS



CHOCTAW ATHLETIC TEAM



First row: Mary Sue Bannister, Big Chief; Dianne Ruffin, Little Chief. Second row: Sylvia Fossett, Shirley Gaddis, Gwenn Alley, Theresa Owens, Yvonne Adams, Marguerite Thigpen. Third row: Barbara Jeffears, Martha Driver, Marjorie Haney, Ann Huber, Sylvia Brown, Mildred Wood, Dot Stutts and Faye Hodge.



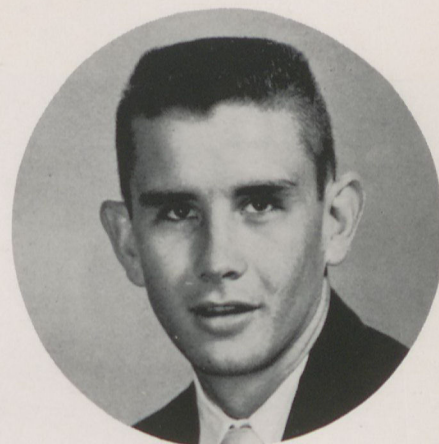
Coach
VERNON GORDON

At the beginning of each year the girls are divided into two teams which are the Choctaws and the Tallulahs. Each team has a big chief, little chief, and a coach. During the year the teams play against each other in volleyball, basketball, and softball. At the end of each year the team which has won the most games is awarded the trophy. For the past few years the Tallulahs have won.

TALLULAH ATHLETIC TEAM



First row: Janice Blalock, Jane Roberts, Elaine Clark, Betty Smith, Voncile Compton, Paula Cagle, Little Chief, and Sandra McAfee. Second row: Janice McClure, Lillian McFarland, Margaret Nelson, Nelle Ponder, Big Chief, Sara Scoggs, Arlene Garrett, Luanne Hayes, and Jo Ann Whittemore. Third row: Margaret Allison, Martha Burgess, Jeanette Wakefield, Rolda Poss, Donna Chastain, Maye Lyon, Ann Walker, and Patsy Harris.



Coach
ED SANDERLIN

SEMINOLES



Jerry Sanders, John Linder, Jimmy Roberts, Robert Waddell, David Strickland, Gene Scarborough, Olin Herndon, Denny Harris, Wayne Lovelace, Jerry Pate, Elwood Sutton, Bryce Holcomb, Lloyd Southern, Larry Phillips, Jerry Satterfield, Eulee Bledsoe, Jimmy Stevens. Center: Curtis Ingram, Little Chief; Ed Sanderlin, Big Chief.



Shortly after school opens in the fall, all new students become members of one of the two boys' athletic teams. The boys gather in the chapel and are chosen to be permanent members of either the Seminole or the Mohawk Tribe. They then elect a Big Chief and a Little Chief.

MOHAWKS



Tong Soo Pak, Kelley Hardin, Ray Oliver, Melvin Bentley, Lawrence Fitts, Joe Harrison, Donald Austin, Douglas Frederick, Herbert Watkins, Lamar Barton, Mike Butts, Grady Palmour, Ben Bryant, Alton Whittemore, Boland Wagner, Willie Smith, Frank Ashbaugh, Nelson Richardson, Ralph Hudgins, Gilbert Adams, Carroll Pendley, Tommy Holmes, John Dallas. Center: Harold Sams, Little Chief; Vernon Gordon, Big Chief.

Keen competition embraces wholesome fun as the teams play volleyball, football, basketball, baseball, and track, because one team must emerge victorious in the spring. On Honors Day a basketball trophy is given to the team which has won the most basketball games. The team which has won the most intramural events during the year is presented an intramural trophy.



STUDENT LIFE AT REINHARDT



We are awakened at 7 a.m. by a familiar sound — the ringing of the rising bell.

Everyone is interested in meal time. The dining hall is one of the most popular spots on campus.



8:30 and it's classtime.

Chapel exercises are held three times each week. These exercises are enjoyable as well as religious and educational.





Free time is spent in the library.



For relaxation, it's the student center for everyone! It serves as a place for refreshments, conversation, and even the latest on Elvis.



Girls enjoy recreation after classes.



This is what Reinhardt's "Little Richard" does to the girls in the lounge.



In the girls' dormitory, preparation is made for tomorrow's tumbling class.



Daily devotional hour



You may find many kinds of scenes in the dorm., like studying, and even playing like small kids. Some students say it's really "the life."



Watching television and lounging serves as a pastime for some students.



OTHER ACTIVITIES



Invitation parties are given by the literary societies to help the freshmen decide which one they want to join.

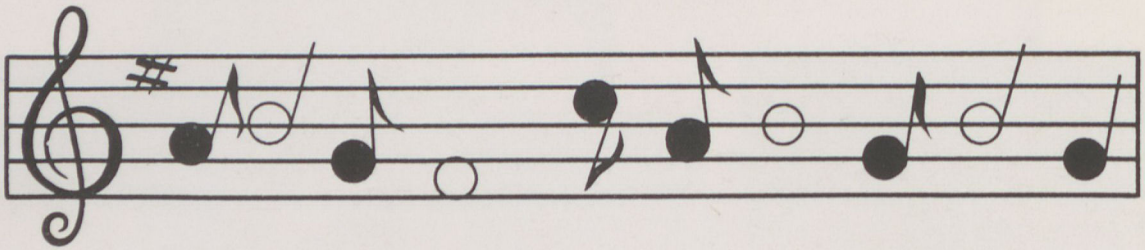


High school week-ends are one of the main events of the year at Reinhardt.



Reinhardt offers many jobs on the campus for students to help earn part of their expenses.





ALMA MATER

Far up in the mountains' azure
Blest with ideals true,
With influence most inspiring
Reinhardt, we love you.

In thy splendor stand forever,
Spread thy fame afar;
Lend to all a helping hand
Be our guiding star.

In thy memory cherished ever,
We will loyal be;
May each year bring forth more honor
Is our hope for thee.

CHORUS

We will praise thee, ever praise thee,
Be always sincere;
We'll uphold thy purpose high,
Alma Mater, dear.



ADVERTISEMENTS



ALLRED-JORDAN
DRUG COMPANY



Tate, Georgia

JASPER
BANKING COMPANY

Jasper, Georgia
Capital and Surplus \$100,000.00
Deposits Insured Up to \$10,000.00

Member
FEDERAL DEPOSIT INSURANCE
CORPORATION

INGRAM MOTOR COMPANY

C. T. Ingram
Owner — Manager
Phone 4661 and 2891
Ball Ground, Georgia

CELIL L. INGRAM

Ingram Trucking Co.
Ingram Truck Body Co.
BALL GROUND, GEORGIA

PICKENS COUNTY
FEED AND POULTRY

Jasper, Georgia

HARRIS
LUMBER COMPANY

All Kinds of Lumber for All Purposes
Phone 4331 Box 38
BALL GROUND, GEORGIA

ROBERTS MARBLE COMPANY

Builders of Quality
Marble and Granite Mounments
for Half a Century
Ball Ground, Georgia

ROBERTS STORE

General Merchandise
Phone 3911
Ball Ground, Georgia

CHEROKEE FARMER'S
CO-OPERATIVE, INC.

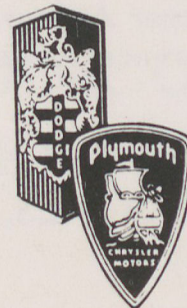
CLAY OWEN, Manager

Phone 223

CANTON, GEORGIA

J. T. Holbrook

R. L. Carmichael



HOLBROOK & CARMICHAEL
MOTOR COMPANY

Phone 440

275 Marietta Street
CANTON, GEORGIA

ETOWAH MAID

Milk and Ice Cream

FOR HOME DELIVERY
PHONE 28

Canton, Georgia

SPARKS

FURNITURE AND APPLIANCES

Canton, Georgia

TOM JONES SUPPLY COMPANY

"Everything to Build Anything"

Quality Building Materials

PHONE 345
Canton, Georgia

KEARLEY'S SERVICE STATION

Gulf Products
Wrecker Service

Phone 178 Highway 5
Canton, Georgia

PAUL BORING

Frigidaire Appliances
Motorola Television

Canton, Georgia

BOB LATHEM & SONS

Pure Oil Products

CANTON, GEORGIA

Your
Kemper Approved
Insurance Advisor

P. W. JONES, JR.

PROTECTION — PLUS
PERSONAL SERVICE

Canton, Georgia

NEJASCO

FARMS
for

Dairy Products
CANTON, GEORGIA



BANK OF CANTON

Canton, Georgia

STRICKLAND & SHELLHORSE
INC.



Cartersville, Georgia

BANK OF WOODSTOCK

Woodstock, Georgia



Member F. D. I. C.

ETOWAH BANK

Canton, Georgia

PETTIT'S CLEANERS

"We Clean Everything but the Baby"

QUALITY CLEANING
AND LAUNDRY SERVICE

Phone 862
Canton, Georgia

Best Wishes
From

KEM
MANUFACTURING CORPORATION

Atlanta 15, Georgia

JOHN SEXTON & CO.
National Wholesale Grocers

P. O. Box 4124
Federal Annex
ATLANTA 2, GEORGIA

L & L
GAS COMPANY
Propane and Butane Gas
CANTON, GEORGIA

**CHEROKEE FEED
AND SUPPLY CO.**

CANTON
CLEANERS & LAUNDRY

Canton, Georgia

OAK GROVE HATCHERY
Thompson's White Rock
and Vantress Cross
JOE GARRISON — PAUL PHILLIPS
Marietta Highway
CANTON, GEORGIA

MORGAN BROTHERS

"Canton's Leading Appliance Store"
YOUR GENERAL ELECTRIC DEALER



Phone 171
CANTON, GEORGIA

SOUTHLAND BUTANE, INC.

Phone 525
SEE SOUTHLAND FIRST

Marietta Highway
Canton, Georgia

ROSENBLUM'S AND BARGAIN STORE

Dry Goods—Shoes—Clothings
CANTON, GEORGIA

CANTON WHOLESALE CO.

Canton, Georgia

BAGWELL & SPEARS

Distributors for



PHONE 560
Canton, Georgia

Compliments of

BUFFINGTON'S

Canton, Georgia



JONES MERCANTILE CO.

Canton, Georgia

BLACKWELL REALTY CO.

Canton, Georgia

McCLURE BOOK STORE

Canton, Georgia

CANTON BUILDERS SUPPLY CO.

Phone 42

CANTON, GEORGIA

WESTERN AUTO STORE

Canton, Georgia

GRIST-LANDERS DRUG STORE

Canton, Georgia

**CANTON THEATRE
M & T DRIVE-IN THEATRE**

Canton, Georgia

T. K. MOORE, JR.

Grading Contractor

CANTON, GEORGIA

STANDARD SERVICE STATION

120 Main Street

Phone 297

CANTON, GEORGIA

DICK INSURANCE AGENCY

for

Safety – Security – Service

YOUR PROTECTION IS OUR PROFESSION

Canton, Georgia

Phone 78-J

TANK CAR SERVICE STATION

Marietta Highway
Canton, Georgia

SAWNEE PROVISION COMPANY

Packers of Quality Meat Products
Jack Posner, Vice Pres.—Treas.
Phone 2318
Cumming, Georgia

LAWSON MOTOR COMPANY

Chevrolet and Oldsmobile Dealers
Sales and Service
JASPER, GEORGIA



**McWHORTER
MOTOR COMPANY**

Buick G. M. C. Willys
Dealer
JASPER, GEORGIA

**CHEROKEE
BAG COMPANY, INC.**

HENSLEY BROTHERS

Poultry Supplies
and
Baby Chicks
Phone 224 Box 367
Ellijay, Georgia

**HEFNER & TEAGUE
FEED STORE**

Your Friendly
RED HAT FEEDS
Dealer

Phone 345 P. O. Box 285
ELLIJAY, GEORGIA

Compliments of
**ATLANTA
GROCERY CO.**

148 Piedmont Avenue, S.E.
ATLANTA 3, GEORGIA
Phone Ja 2-9980

Distributors of the
Best in Institutional Size Products

The church and home are the foundation for happy, successful living. Build your savings toward the purchase of a home.



KNOX HOMES

are available in a wide range of models and prices. All bear the seal of approval of the Southern Building Code Congress, which means superior quality materials and workmanship.

Compliments of
H. B. BANKS GROCERY
Fairmount, Georgia

SILVERS APPLIANCE
Frigidaire Maytag
Phone 2921
Fairmount, Georgia

Compliments of
QUALITY LAUNDRY
301 N. Tennessee Street
CARTERSVILLE, GEORGIA

**BARTOW TRUCK
& IMPLEMENT COMPANY**
International — McCormick-Deering
CARTERSVILLE, GEORGIA

CITIZENS BANK

Member F. D. I. C.

BALL GROUND, GEORGIA

PEOPLES AUTOMOBILE LOAN AND FINANCE CORPORATION

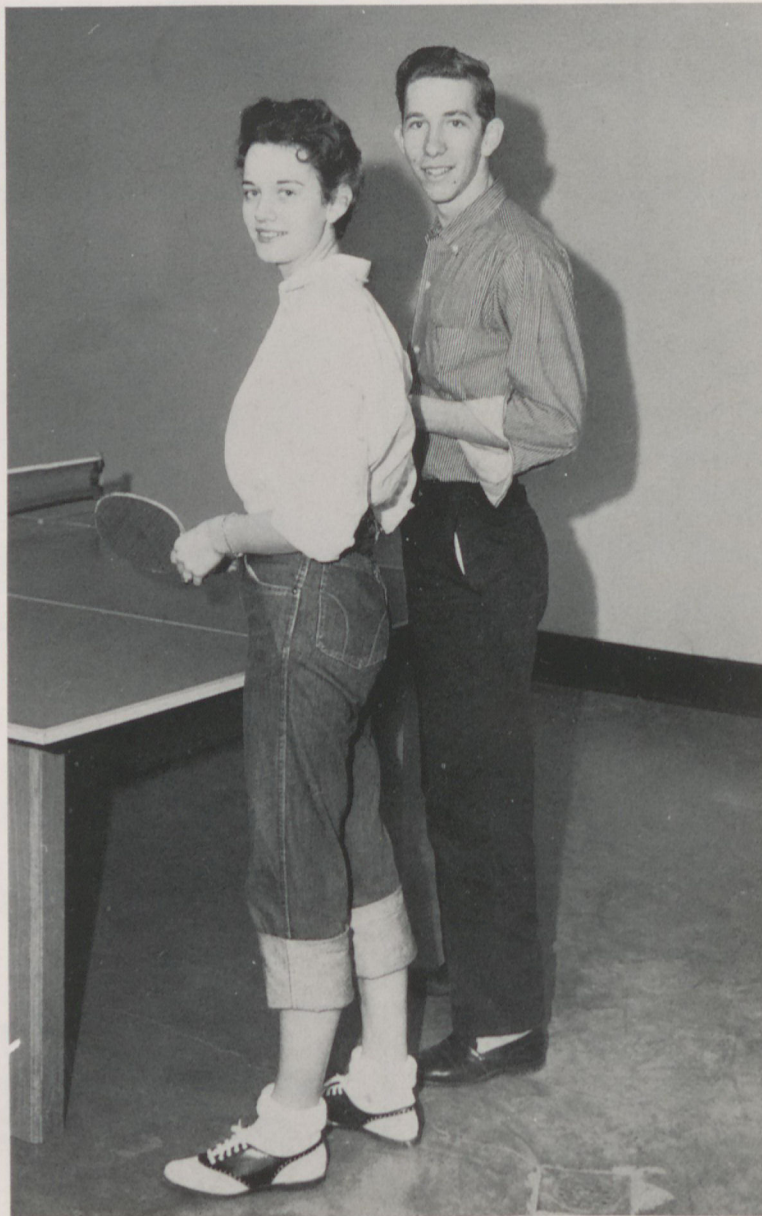
Offices in
MARIETTA
CARTERSVILLE
ROME
and
DALTON

SMITH GIN COMPANY

Cotton and Cottonseed
Cottonseed Meal and Hulls
CARTERSVILLE, GEORGIA

Compliments of
CANTON COTTON MILLS

Canton, Georgia



MANUFACTURERS OF FINE DENIMS

for More Than 55 Years

We Extend Our Best Wishes to

Reinhardt College

CANTON JEWELRY CO. Repairing a Specialty Phone 16 Canton, Georgia WORTH LATHAM	B & L FEED COMPANY Feed, Chicks and Supplies Phone 575 Canton, Georgia
ROPER TIRE CO. Car—Truck—Tractor Tires PHONE 851-W Canton, Georgia	CANTON HARDWARE COMPANY Canton, Georgia We Extend Our Best Wishes to Reinhardt College
TRIBUNE PRINTING CO. Commercial Printing Publishers of North Georgia Tribune	REEVES FLOWERS For All Occasions Phone 2131 Woodstock, Georgia Phone 130 Canton, Georgia
ALEXANDER STUDIO Phone 285-J CANTON, GEORGIA	BLAIR SUPER MARKET Canton, Georgia

Save With Safety
 Current Dividend Rate $3\frac{1}{2}$ Percent per Annum, Payable
 December 31 and June 30

Savings Insured Up to \$10,000.00
 Inquiries By Mail Solicited

JORDAN GARDNER
 President

T. E. BASKIN
 Exec. Vice President

WILDER G. LITTLE
 Secretary Treasurer

*J. GUY ROBERTS
 Attorney

ROSSER N. LITTLE
 Director

WILLIAM D. LITTLE
 Director

CHARLES J. THOMAS
 Director

MARIETTA FEDERAL SAVINGS & LOAN ASSOCIATION

Phone 8-7535
 114 Atlanta Street
 MARIETTA, GEORGIA
 *Attended Reinhardt College

Success to the graduating class



BOTTLED UNDER AUTHORITY OF THE COCA-COLA COMPANY, BY

MARIETTA COCA-COLA BOTTLING COMPANY

SEARS ROEBUCK AND CO.

Marietta, Georgia

Compliments of

C. M. JONES

Calhoun, Georgia

Compliments
of

JOHN W. HODGE

Cartersville, Georgia



KESSLER'S
Canton, Georgia

J. D. MOORE

Wholesale Fruits and Produce

PHONE 10

Canton, Georgia

John C. Calhoun Hotel
Anderson, S.C.

Hotel Scott
Thomasville, Ga.

Hotel Fair Forest
Union, S.C.

Langren Hotel
Asheville, N.C.

STILES HOTEL COMPANY

JOHN C. STILES, President

Hotel Georgian
Athens, Ga.

Oak Hill Motel
McCormick, S.C.

Bon Air Hotel
Bainbridge, Ga.

Lambuth Inn
Lake Junaluska, N.C.

Compliments of
W. P. STEPHENS LUMBER CO.

"Stephens Quality Is Your
Best Assurance of Quality"

AUSTELL

MARIETTA

ROSWELL



CANTON DRUG COMPANY

Canton, Georgia

**pH OF MOST
GEORGIA SOILS
IS 5.5 TO 6.0**

8.5 —

8.0 —

7.5 —

7.0 —

6.5 —

6.0 —

5.5 —

5.0 —

4.5 —

**RANGE
FOR
HIGHEST
PRODUCTIVITY**

RAISE YOUR

PH FACTOR
with

WILCO

Dolomitic Limestone

Wilco Dolomitic Limestone will sweeten your soil until it tests pH 6.5 to 7, the range for highest productivity. It will also add the calcium and magnesium so vital to plant and animal life. Result: extra crops, healthier and more profitable livestock, and a better, all-around job of farming.

Wilco Dolomitic Limestone is produced by

WILLINGHAM-LITTLE STONE COMPANY

1323 FULTON NATIONAL BANK BUILDING • ATLANTA, GEORGIA

Compliments of
WOODSTOCK SERVICE STATION

E. B. Eubanks, Owner

Best Eating Place in Georgia
(Make Us Prove It!)

DIXIE INN

For Reservations and Parties
Phone Glendale 5-6450
Woodstock, Georgia

**HOTEL & RESTAURANT
SUPPLY CO., INC.**

Manufacturers Distributors

FOOD SERVICE

AND PREPARATION EQUIPMENT

**J. T. KNIGHT
AND SON**

972 Avon Avenue, S.W.
ATLANTA, GEORGIA

D. B. SMITH

Grocer

Waleska, Georgia

PINE CREST INN

Holly Springs, Georgia

LEE BAILEY
Service Station

Ball Ground, Georgia

A Mark of

QUALITY
FOODS



AN

Compliments of
MOORE'S FIX-IT SHOP

ANONYMOUS

FRIEND

HOMER THOMPSON
GROCERY AND FEEDS

Waleska, Georgia

AUTOGRAPHS



LITHOGRAPHED BY

TAYLOR PUBLISHING CO.

DALLAS • TEXAS

The Best Yearbooks are TAYLOR-MADE





