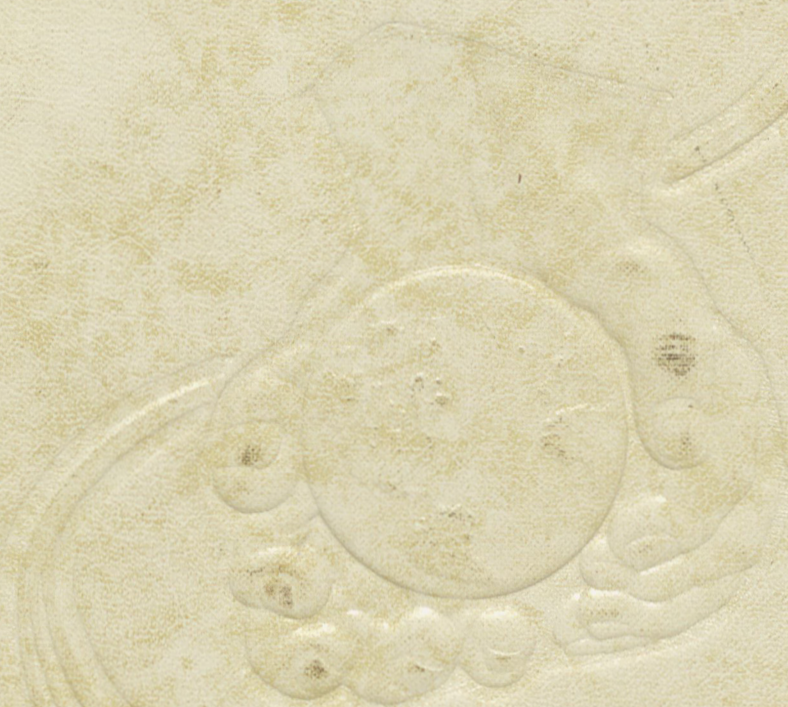


1
9
6
0



CHEROKEE PHOENIX

1960



Cherokee Phoenix

Reinhardt College
Waleska, Georgia
Volume XII 1960



the Cherokee Phoenix



Contents

Administration page 12

Classes page 22

Organizations page 58

Features page 84

Advertisements page 98





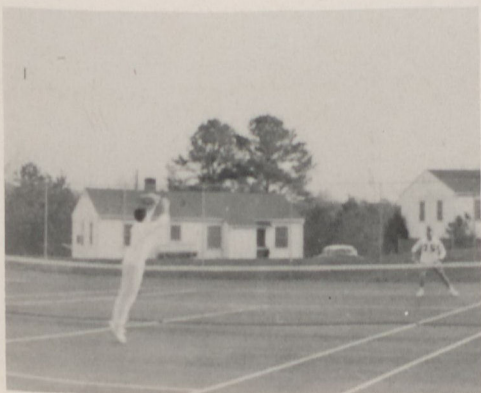
Mr. Drummond

Dedication

For his dedicated service
As teacher
As business manager
As friend

We honor Mr. Othel Eugene Drummond
with the dedication of the 1960 *Cherokee*
Phoenix.

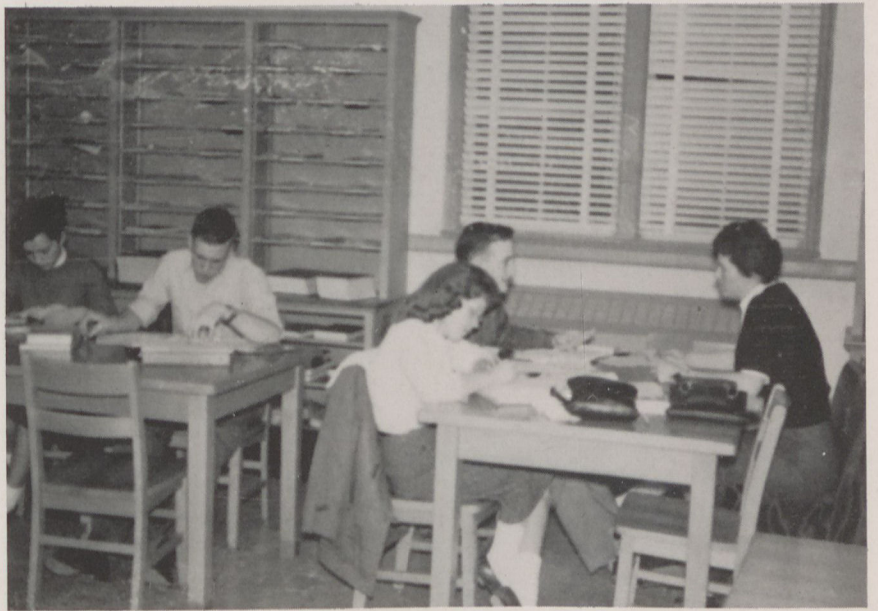
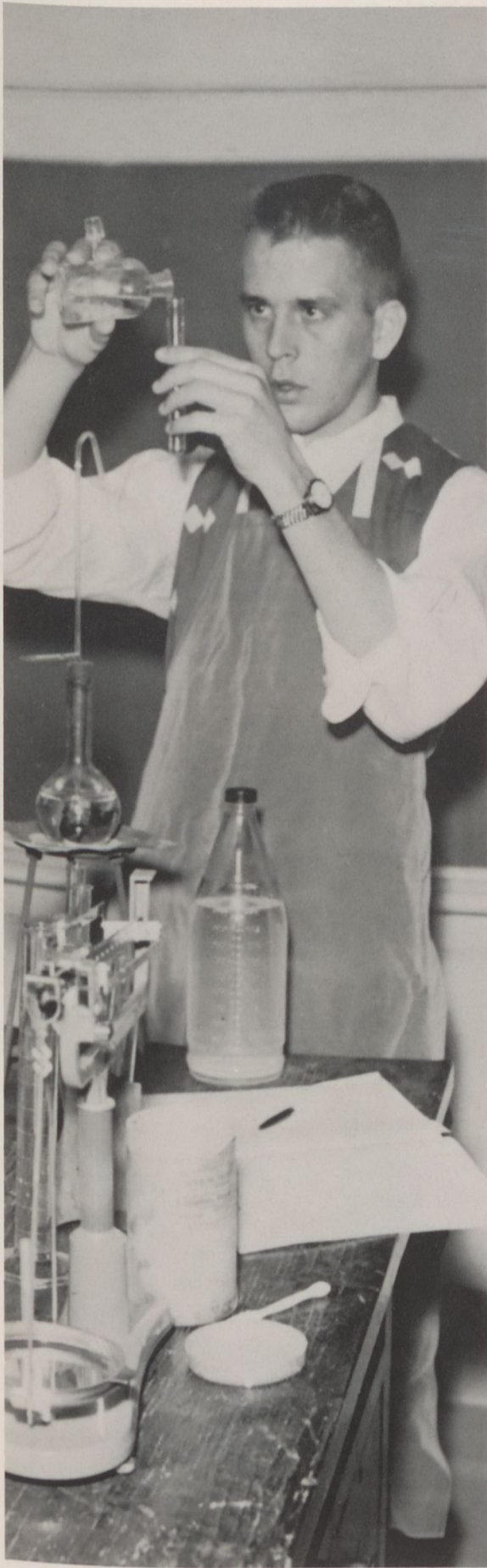




WE HAVE A WORLD OF OUR OWN...



A WORLD OF MAKE-BELIEVE AND ADVENTURE...



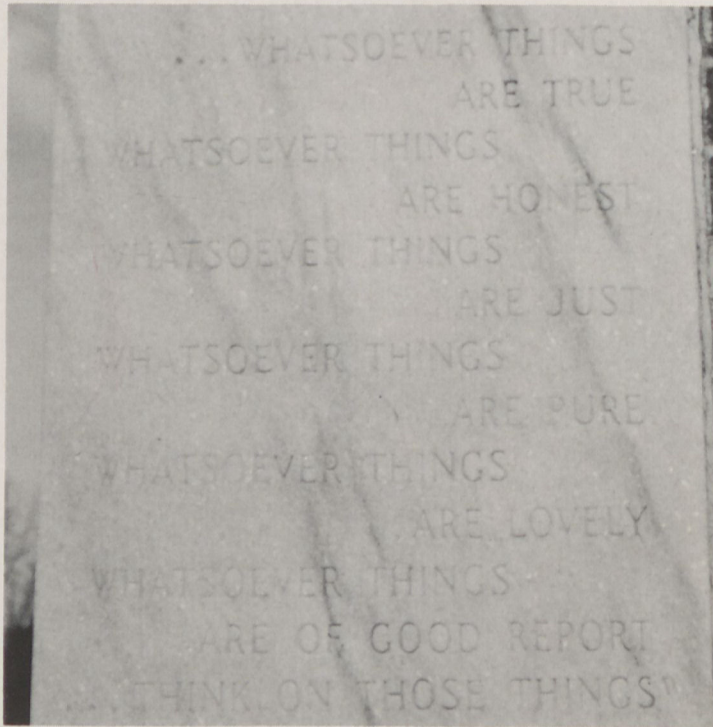
A WORLD OF LEARNING...



A WORLD OF FELLOWSHIP AND FUN...



A WORLD OF SPORTS, BEAUTY, AND TALENT...



A WORLD ESTABLISHED ON CHRISTIAN IDEALS...

ALMA MATER

*Far up in the mountains azure
Blest with ideals true,
With influence most inspiring ---
Reinhardt, we love you.*

*In thy splendor stand forever
Spread thy fame afar;
Lend to all a helping hand,
Be our guiding star.*

*In thy memory cherished ever,
We will loyal be;
May each year bring forth more honor
Is our hope for thee.*

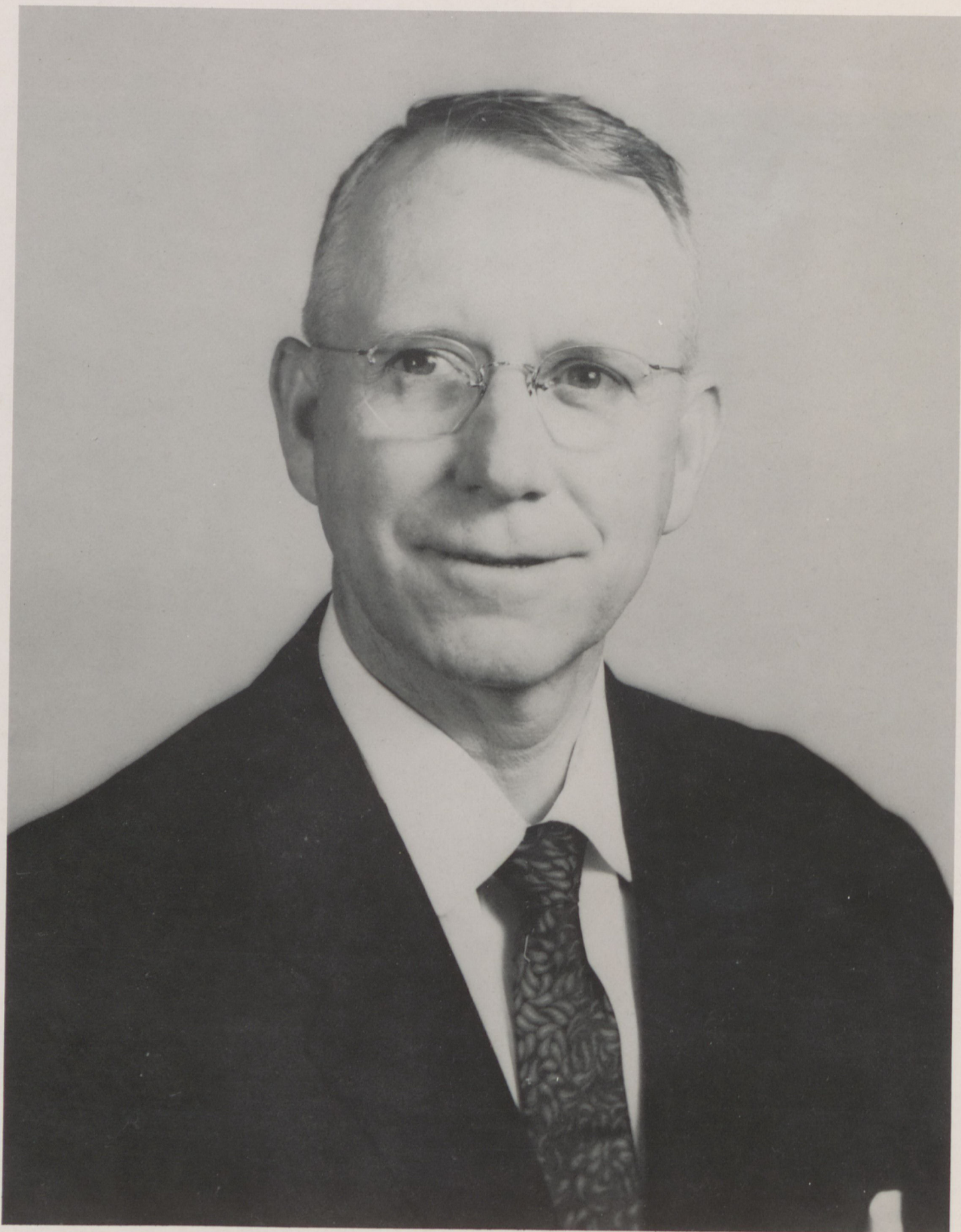
Choral refrain:

*We will praise thee, ever, praise thee,
Be always sincere;
We'll uphold thy purpose high,
Alma Mater, dear.*



ADMINISTRATION





Mr. J. R. Burgess, Jr.
President of Reinhardt College



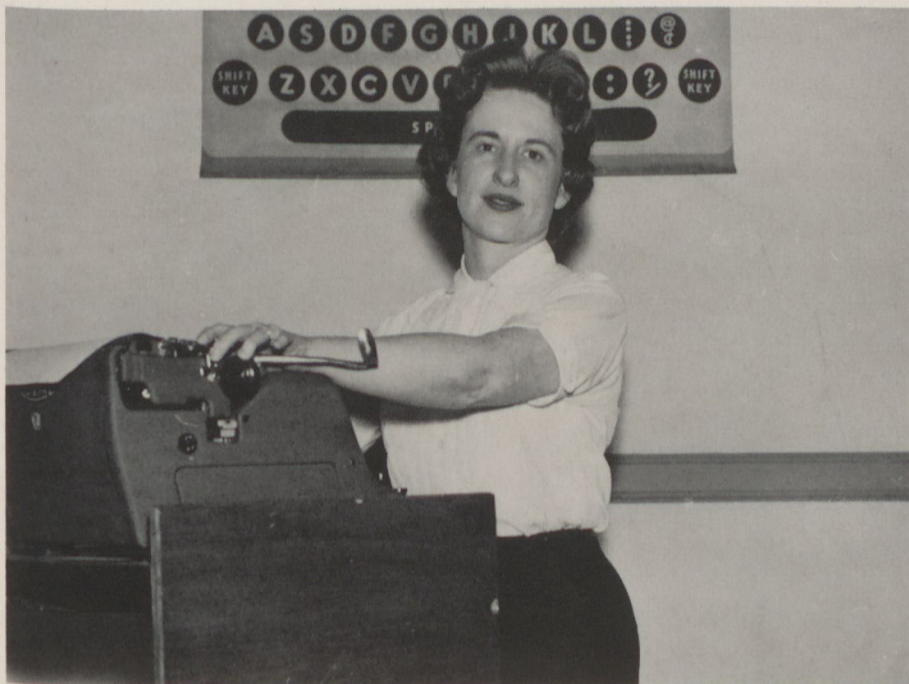
DECORA ADAMS

A.B., Georgia State College for Women;
M.A., University of Georgia; Danforth
Scholar, Northwestern University; Gradu-
ate Study, Columbia University and George
Peabody College for Teachers.
English; Dean of Women



MRS. MARTHA STALLINGS
BURGESS

B.S. and M.Ed., University of Georgia
Education; Social Studies



MRS. THOMASINE COLLINS
B.S., Arkansas Polytechnic College
Business

L. CLYDE COLLINS
 B.S., Arkansas Polytechnic College; M.S.,
 University of Arkansas.
*Physical Education; Dean of Men;
 Director of Admissions*



MARGARET ANN CROFT
 B.S., State Teachers College; M.A., George
 Peabody College for Teachers.
English

OTHEL EUGENE DRUMMOND
 B.B.A., University of Georgia
Accounting; Business Manager



JOHN PRYOR HAYS

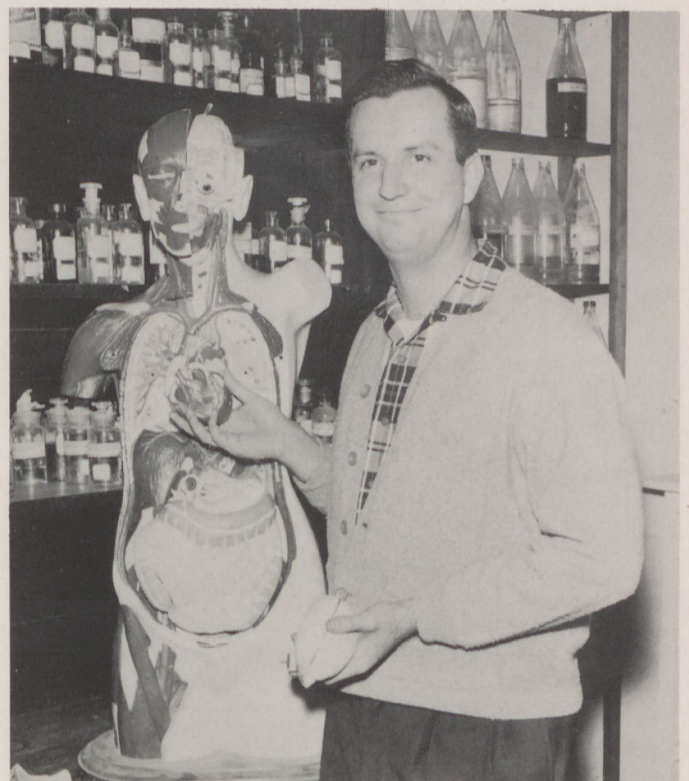
Diploma, Atlanta Junior College; A.B., University of Georgia; M.A., Emory University; Ed.M., Temple University; Candidate for Ed.D., Temple University; Danforth Scholar, Pomona College.
Social Studies



JOHN W. ROGERS, JR.

A.B., Stetson University; B.D., Southern Theological Seminary.
History

THOMAS H. JACKSON
B.S., University of Georgia; Graduate Study, University of Georgia.
Science





JONATHAN C. ROGERS
B.S., Piedmont College; B.S., Earlham College; M.A., Columbia University; D.Ed., Piedmont College; President Emeritus, University of Georgia.
Mathematics

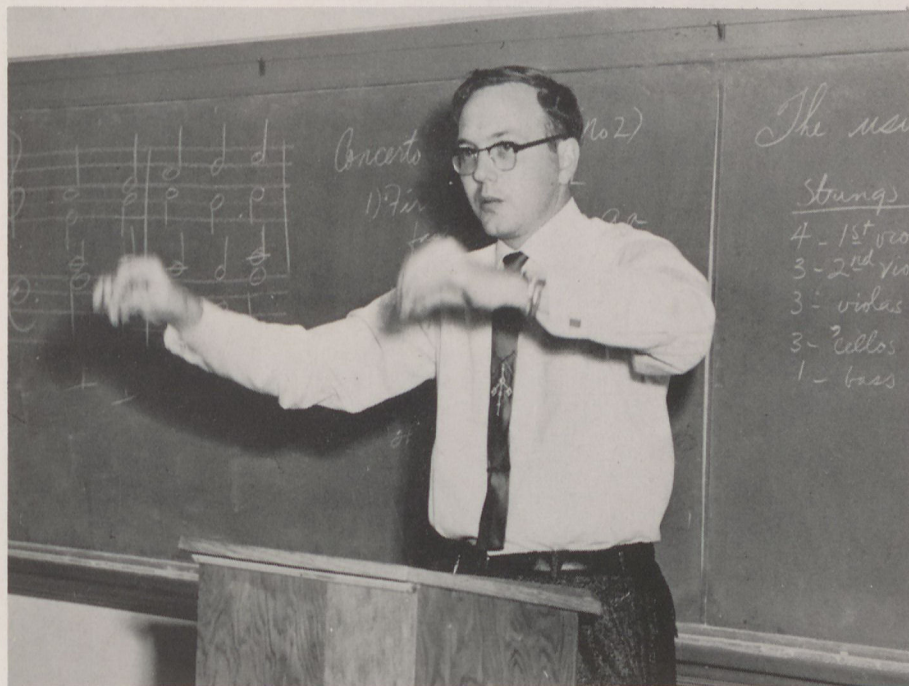
JOEL ADAMS STOWERS
B.S., Georgia Teachers College; M.Ln., Emory University.
Librarian



ROBERT RIGDON SINGLETON
A.B., University of Georgia; Graduate Student, Columbia University.
English



MACK TRIBBLE, JR.
A.B., Duke University; B.D., Emory University.
Bible; Religious Education; Speech



THOMAS D. WARREN
B.M. and M.M., George Peabody College for Teachers; Candidate for Ph.D., George Peabody College for Teachers.
Music



MRS. JUNE WARREN
A.A., Tennessee Wesleyan College; B.S., George Peabody College for Teachers.
Music



MRS. ELLA BELLE HAYS
Boys' House Director



MRS. RUTH B. WILDER
Girls' House Director



MRS. ADDIE CAGLE
Student Center Manager



MRS. NIDA C. LIPSCOMB
School Nurse; Boys' House Director



MRS. ALMA MOORE
Dietitian



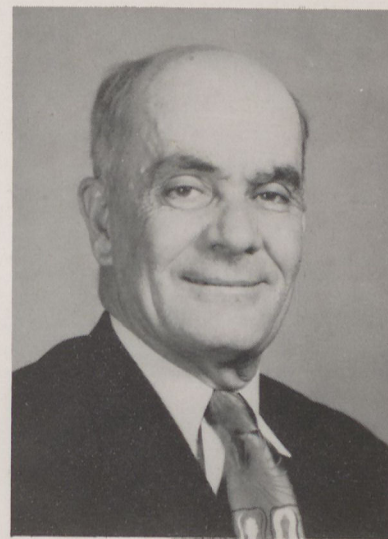
MRS. BARBARA COX
Bursar



C. RAY OLIVER
Farm Manager



CARL TARPLEY
*Consultant and Part-time
Director of Community Service*



L. N. FOSTER
Special Representative

HOWARD H. CROWE
Maintenance Superintendent

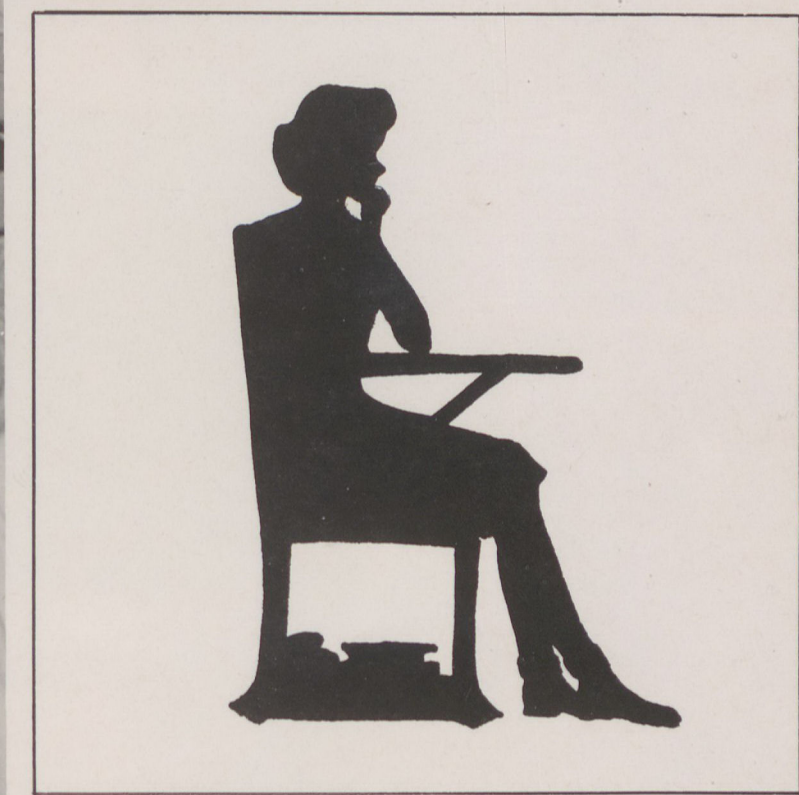


MRS. YVONNE HATCHER
Secretary to the President





C
L
A
S
S
E
S



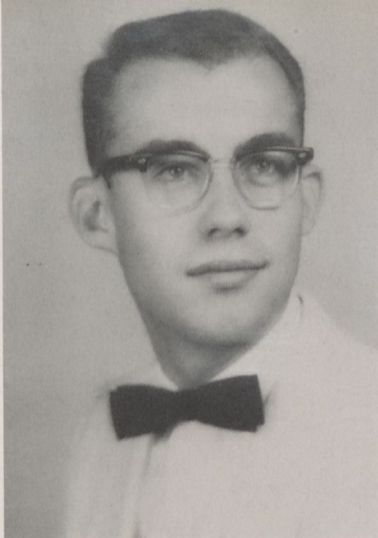
Sophomore Class of 1960



OFFICERS: Charles Banks, president; Al Thomas, vice-president; Brenda Knight, secretary; Donna Atkinson, treasurer. Mr. Joel Stowers, sponsor.

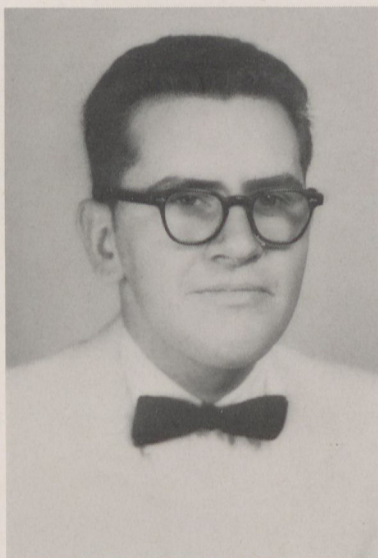


Miss Adams' English Literature Class on a trip to the College Pond. "Lit Class" is one word every sophomore hears!



HILDA MARTHA ARECHAVALETA.
Matanzas, Cuba.
Alpha Society; Choctaws; Dramatics Club.

BOB ALDRICH. Cedartown, Georgia.
Haygood Society; Seminole.

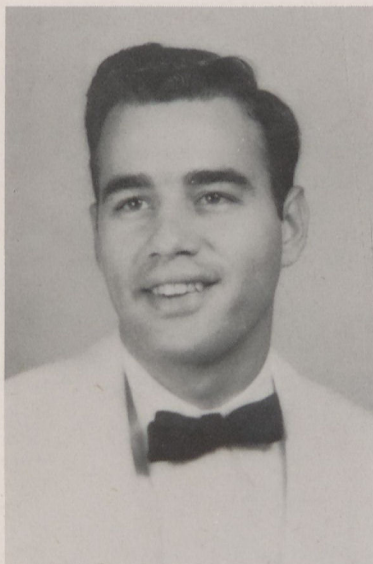


DONNA ATKINSON. Jacksonville, Florida.
S.G.A., secretary; Cherokee Phoenix, Business Manager; Sophomore Class treasurer; Pi Epsilon; Phi Theta Kappa; Delta Society; Choctaws; S.N.E.A.; Who's Who.

BUDDY AUTRY. Plainville, Georgia.
Pierce Society; Dramatics Club; Cherokees; Hiltonian Staff; M.S.M.

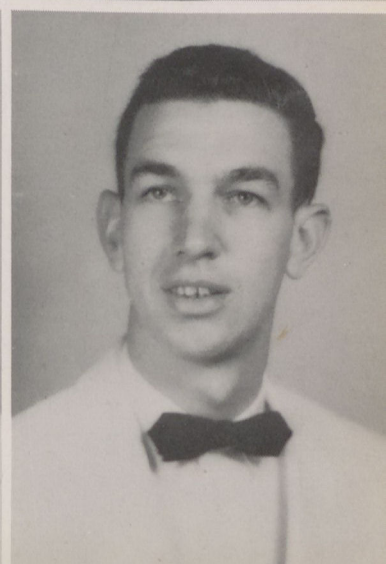
CHARLES BANKS. College Park, Georgia.
B.S.U., president; Pierce Society; Seminoles; Circle K, vice-president; Freshman Class treasurer; Sophomore Class President; College Choir; Who's Who; Ensemble.

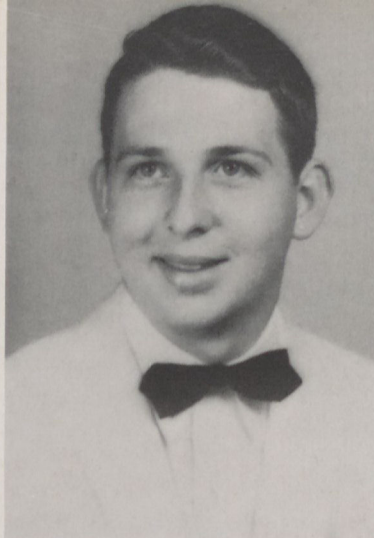
SANDRA BALLEW. Jasper, Georgia.
Day Students' Club; Choctaws.



DONALD BARNES. Gainesville, Georgia.
Cherokees; Day Students' Club.

DAN BECK. Cartersville, Georgia.
Mohawks.





CLOVIS BIGGERS. Buchanan, Georgia.
Tallulahs; Alpha Society; M.S.M. Council.

HUGH BOLING. Ball Ground, Georgia.
Dramatics Club; Day Students' Club; Cherokees;
S.G.A.; Circle K Club; I.R.C. Debater.

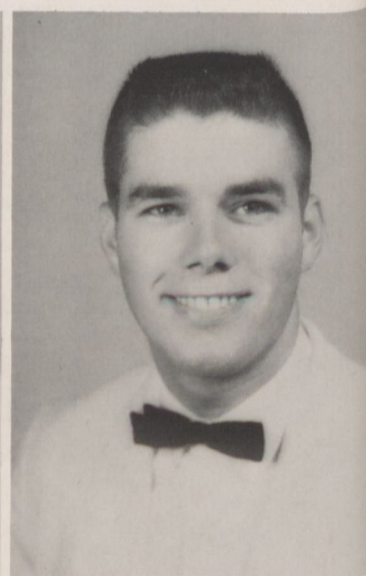


SARA JO BOOKHARDT. Denton, Georgia.
Pi Epsilon, vice-president; S.N.E.A., reporter, *Future Teacher of the Year*; Alpha Society, secretary, debater,
Best Speaker; Blue and Gold Staff, Editor; M.S.M.
Council; Tallulahs.

FRANCES BROGDON. Omega, Georgia.
Choctaws; Alpha Society; College Choir; Tumbling
Team; Dramatic Club; Hiltonian Staff; S.N.E.A.

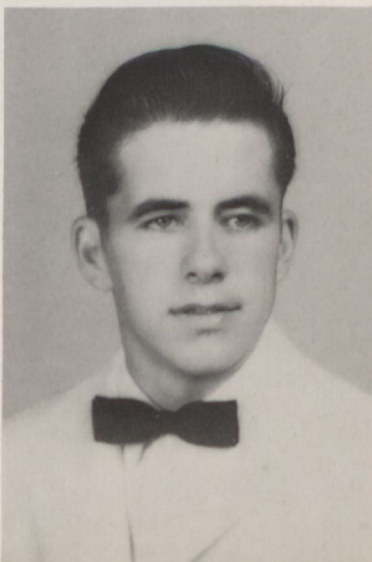
TROY BROOKSHIRE. Canton, Georgia.
Haygood Society; Day Students' Club.

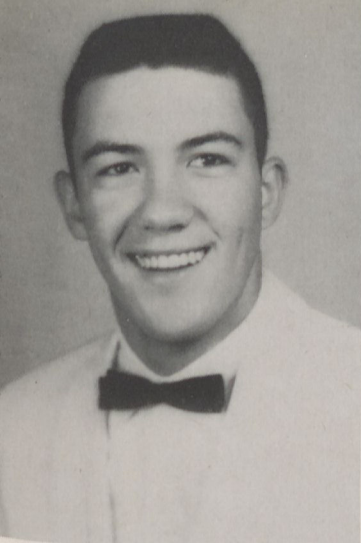
JIM BUCHANAN. Decatur, Georgia.
Freshman Class President; Mohawk; Haygood Society,
vice-president; M.S.M. President; S.N.E.A.; S.G.A.,
vice-president; Circle K Club, president; Pi Epsilon;
Religious Life Council; Who's Who; State Governor,
Circle K.



JERRY BUTLER. Sylvester, Georgia.
Haygood Society; Apache; Hiltonian Staff; Dramatic
Club; Tumbling.

BRENDA CAGLE. Canton, Georgia.
Hiltonian Staff; Alpha Society; Dramatic Club; Tal-
lulahs; Day Students' Club.





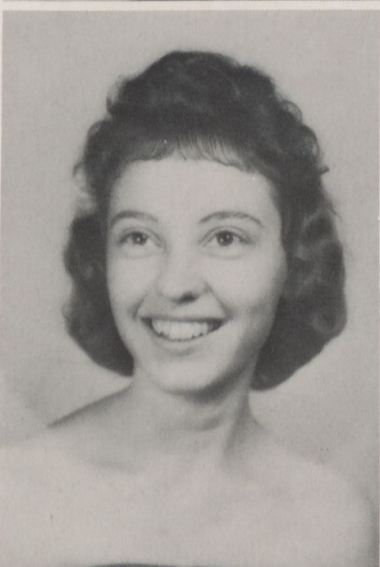
JAMES CASON. Decatur, Georgia
Haygood Society; Apache; College Choir.



ELSIE CHADWICK. Cumming, Georgia.
Day Students' Club.



FAYE CHAMPION. Canton, Georgia.
Alpha Society; Pi Epsilon; Phi Theta Kappa, president;
Tallulah; Day Students' Club.



CAROLYN CLEGHORN. Dacula, Georgia.
Choctaws; Delta Society, treasurer; S.N.E.A.

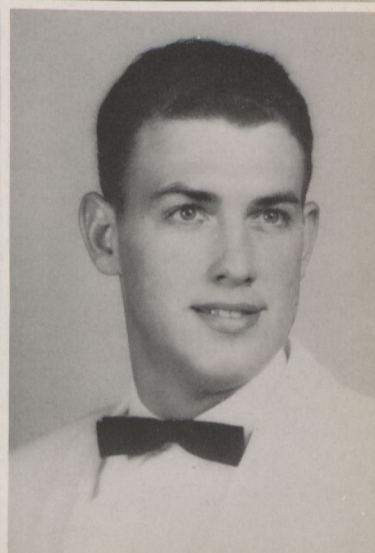
DEAN CLEMMONS. Kingston, Georgia.
Pi Epsilon; Delta Society, treasurer, Debater; S.N.E.A.;
Choctaw; M.S.M. Council; *Future Teacher of the Year*.

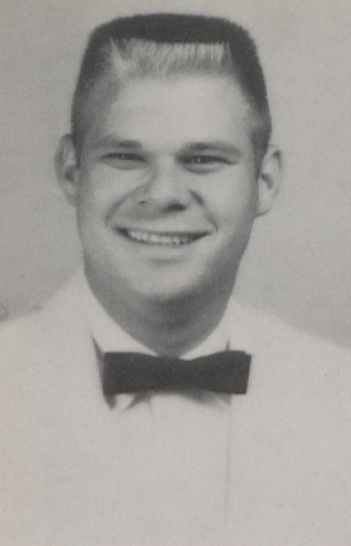
JEAN CLEMMONS. Kingston, Georgia.
M.S.M. Council; S.N.E.A., secretary-treasurer; Delta
Society, president; Pi Epsilon; Blue and Gold Staff;
Choctaw; Who's Who; Religious Life Council.



MARY CLEMONS. Ball Ground, Georgia.
Alpha Society; Miss Haygood; Tallulah; College Choir;
Hiltonian Staff; S.G.A.; B.S.U.

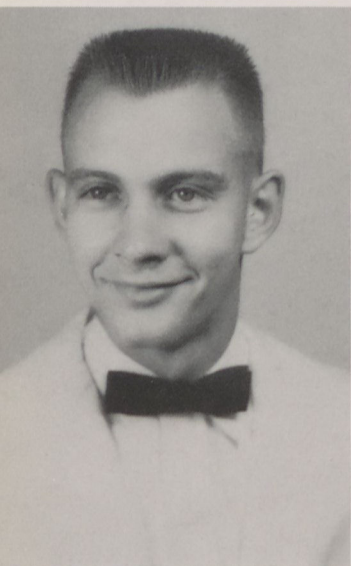
GEORGE COKER. Roswell, Georgia.
Circle K Club; Apache; Pierce Society, vice-president;
College Choir, vice-president; M.S.M. Council; Who's
Who.





BOBBY CRAVEN. Atlanta, Georgia.
Haygood Society, Chaplain; M.S.M. Council; S.N.
E.A.; Mohawk, Big Chief; Dramatic Club.

LOWELL CROFT. Acworth, Georgia.
Circle K Club; Apache; Pierce Society; M.S.M. Coun-
cil; S.N.E.A.

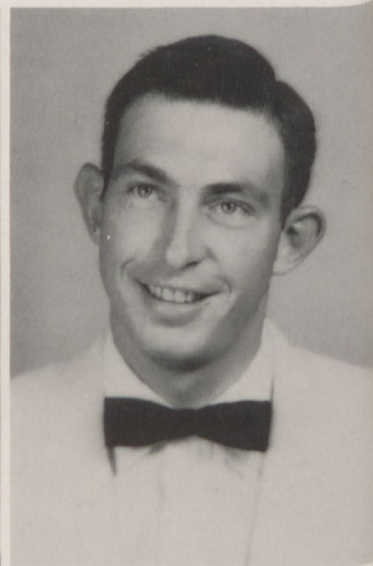
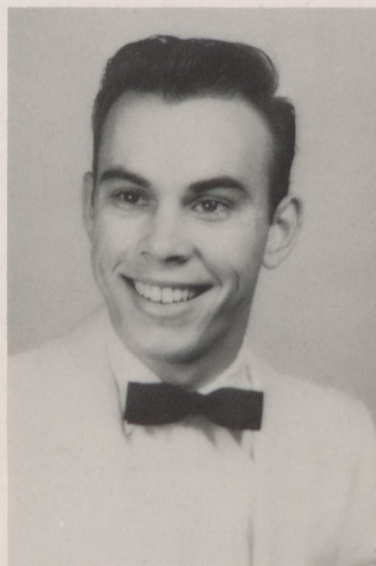


LARRY DANIEL. Calhoun, Georgia.
Circle K Club; Seminoles, Big Chief; Haygood Society,
secretary; Tallulah Coach; Tumbling Team.

JOYCE DAVEY. Atlanta, Georgia.
Delta Society, president; Miss Pierce; Choctaw;
S.N.E.A.

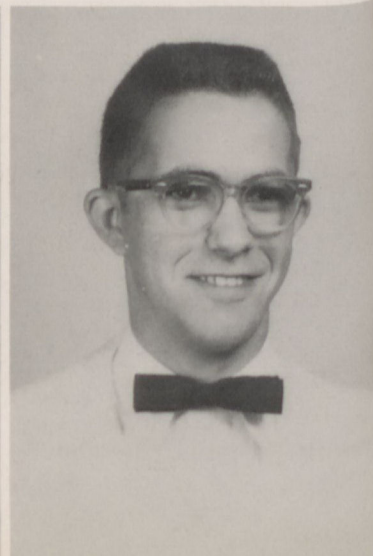
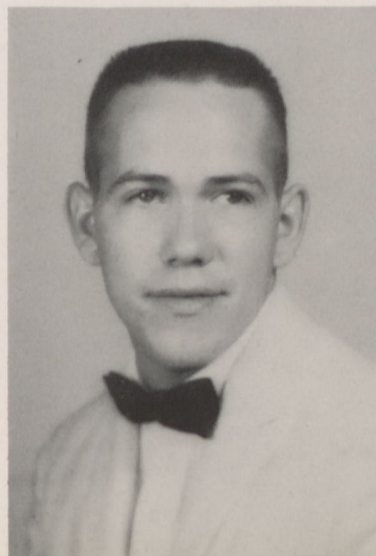
TEMPLE DAVIS. Ellijay, Georgia.
Mohawks; Pierce Society; Dramatic Club.

T. W. DAVIS. Lafayette, Georgia.
Pierce Society, secretary-treasurer; Seminole.



STANLEY DEAN. Jasper, Georgia.
Mohawks; Day Students' Club.

JOE DEEN. Baxley, Georgia.
M.S.M. Council; Pierce Society; Seminole.





JUANITA DICKERSON. Ball Ground, Georgia.
Choctaw; Day Students' Club.

FRANCES DRUMMOND. Waleska, Georgia.

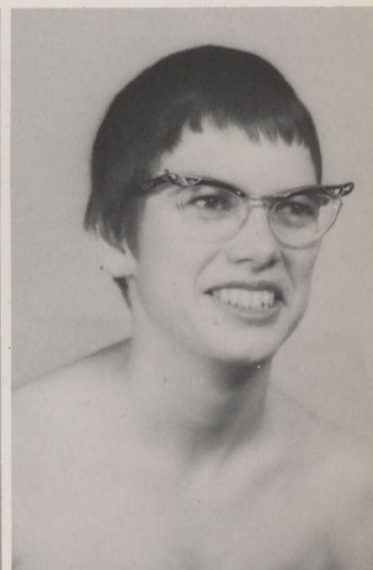


JUNE DYSART. Cartersville, Georgia.
Dramatic Club; College Choir; Alpha Society; Choctaw, Little Chief.

RUTH EDENS. Sugar Valley, Georgia.
Alpha Society; Choctaw.

CAROLE ELLIS. Chatsworth, Georgia.
S.G.A.; Pi Epsilon, president; Cherokee Phoenix, Business Staff; Alpha Society, treasurer; Tallulah; S.N.E.A.

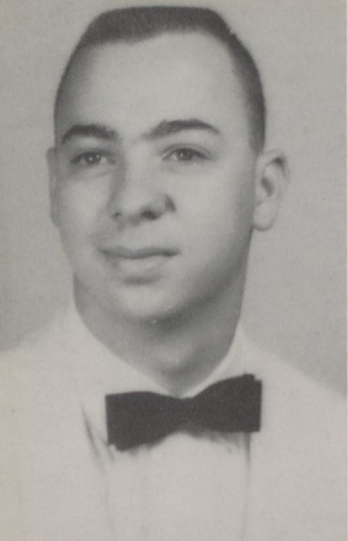
MARTHA SUE ENGLAND. Dalton, Georgia.
Delta Society; Tallulah; College Choir.



FRANCES ESLINGER. Ringgold, Georgia.
Alpha Society; B.S.U.; Choctaw, Big Chief; Pi Epsilon; Phi Theta Kappa; Holtonian Staff; I.R.C. Debater.

CAROL FINDLEY. Fairmount, Georgia.
Choctaw; Delta Society; S.N.E.A.; Dramatic Club; Pi Epsilon.





ALLEN FOSSETT. Canton, Georgia.
Pierce Society; Cherokee Phoenix Staff; Day Students' Club.

JOANNE GILBERT. Cumming, Georgia.
Alpha Society; Tallulah; Day Students' Club.



MARY JANE HALEY. Canton, Georgia.
M.S.M. Council, secretary; Religious Life Council;
Alpha Society, President; Choctaw; College Choir; Pi
Epsilon; Fellowship Class, president; Who's Who.

MYRA HAMMOCK. Adrian, Georgia.
Delta Society, secretary; S.N.E.A.; Tallulah.

GLEND A HAWKINS. Trion, Georgia.
Alpha Society; Tallulah; Hiltonian Staff; M.S.M.,
secretary; Dramatic Club; S.N.E.A.; Religious Life
Council.

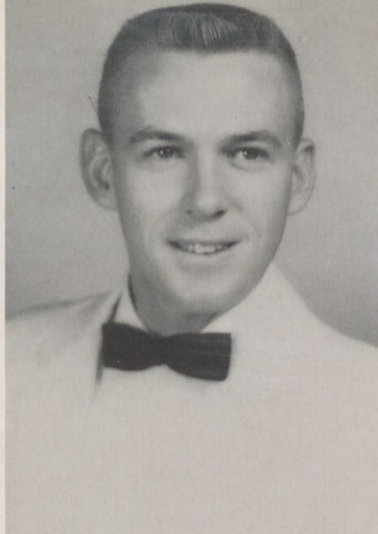
JO ANN HAWKINS. Kingston, Georgia.
Alpha Society; Choctaw; M.S.M. Council.



YVONNE HARRIS. Ball Ground, Georgia.
Tallulah; Alpha Society; College Choir; Day Students'
Club.

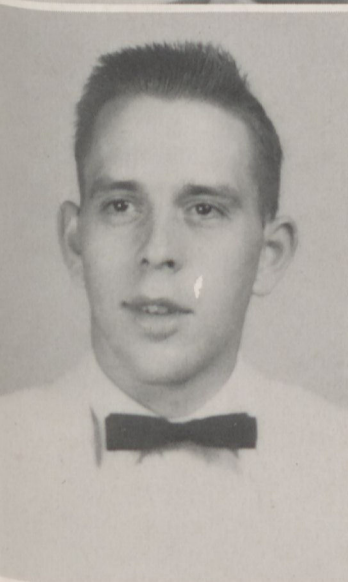
EVELYN HILL. Ellijay, Georgia.
Alpha Society; Tallulah; Pi Epsilon, secretary; Phi
Theta Kappa, vice-president.





NINA HILL. Ball Ground, Georgia.

CHARLES HOPKINS. Canton, Georgia.
Cherokee.



JOEL HOPKINS. Fairburn, Georgia.
Haygood Society; Cherokee, Little Chief; Circle K
Club, secretary; Cherokee Phoenix, photographer.

LINDA HUTCHINSON. Rome, Georgia.
Tallulah; Alpha Society.

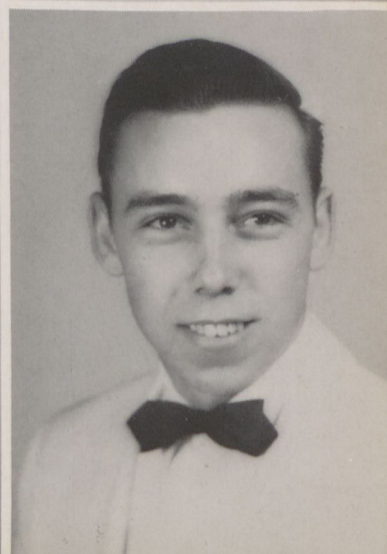
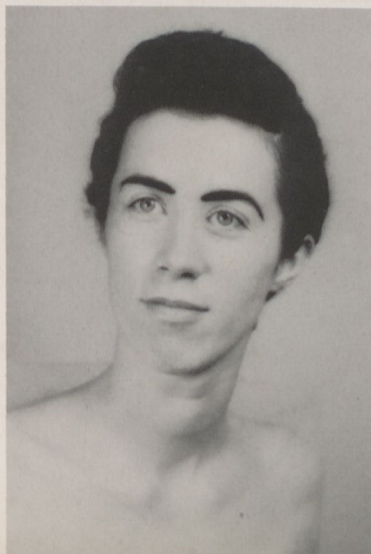
JACKIE JAMES. Calhoun, Georgia.
Tallulah, Little Chief; Alpha Society; B.S.U., secre-
tary-treasurer, reporter; S.G.A.; Religious Life Coun-
cil, secretary; Tumbling Team; College Choir.

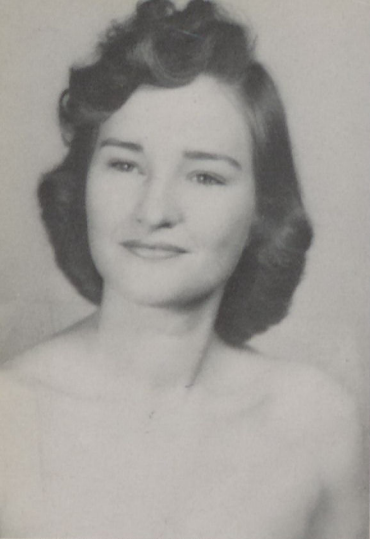
BARBARA JOHNSON. Ellijay, Georgia.



BARBARA JONES. Tate, Georgia.
Choctaw; Day Students' Club.

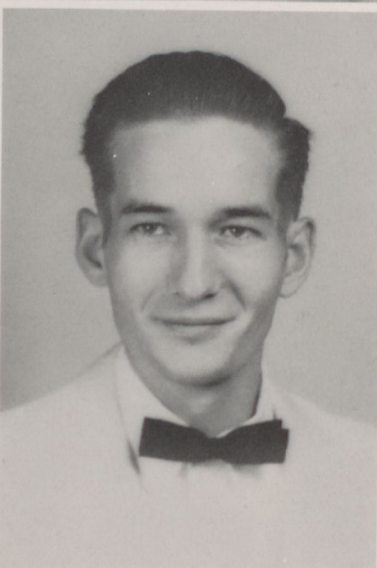
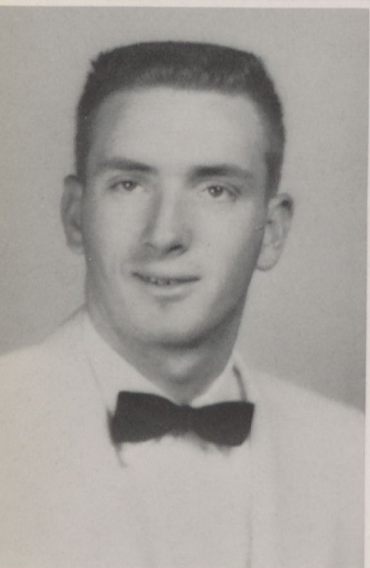
ELTON JONES. Acworth, Georgia.
Seminole; Pierce Society, president; Dramatic Club;
Circle K Club; Tumbling Team.





CAROLYN JORDAN. Lafayette, Georgia.
Alpha Society; Tallulah; B.S.U.; College Choir;
Ensemble.

JOAN JABALEY. Nelson, Georgia.
Choctaw; Day Students' Club; Delta Society.



RONALD KENNEDY. Cartersville, Georgia.
Pierce Society; Mohawk; Day Students' Club.

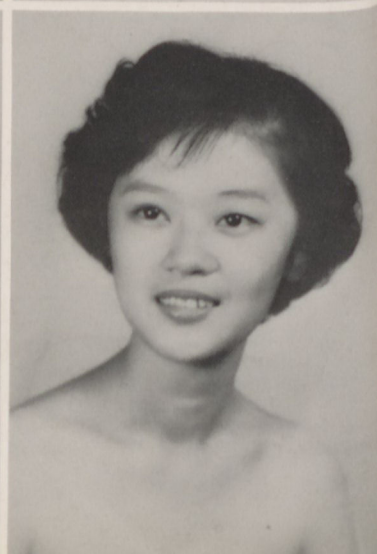
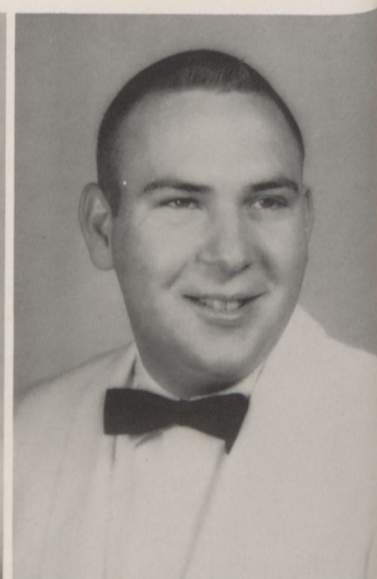
JERRY KINSER. Ellijay, Georgia.
Pierce Society.

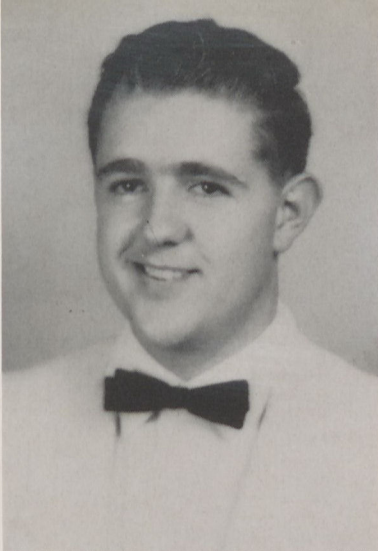
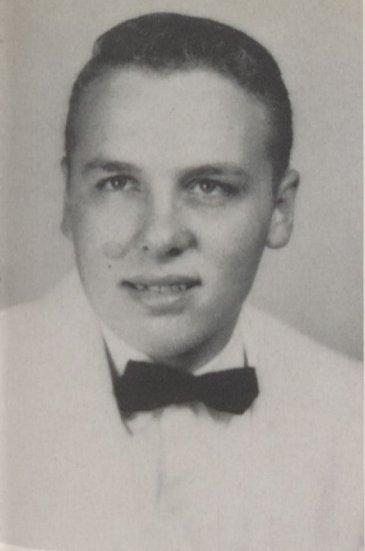
BRENDA KNIGHT. Marietta, Georgia.
Choctaw; Sophomore Class secretary; S.N.E.A., vice-
president, president; Delta Society, secretary, treasurer;
Cherokee Phoenix, Art and Feature Editor; Dramatic
Club; Miss Reinhardt; Who's Who.

DONALD KNIGHT. Ellijay, Georgia.
Mohawk; Haygood Society; Secretary of Stiles-Dimon
Court.

JEAN LANCASTER. Trion, Georgia.
Delta Society; Pi Epsilon, Tallulah; Blue and Gold
Staff; M.S.M. Council.

DOROTHY MA. Hong Kong, China.
Alpha Society; Dramatic Club; Blue and Gold Staff;
Choctaw.





ERNEST MEADOWS. Athens, Georgia.
Haygood Society; Cherokee, Big Chief; College Choir.

RAYMOND MEADOWS. Wadley, Georgia.
Haygood Society; Cherokee.



MARY NELL McGUIRE. Adairsville, Georgia.
Delta Society.

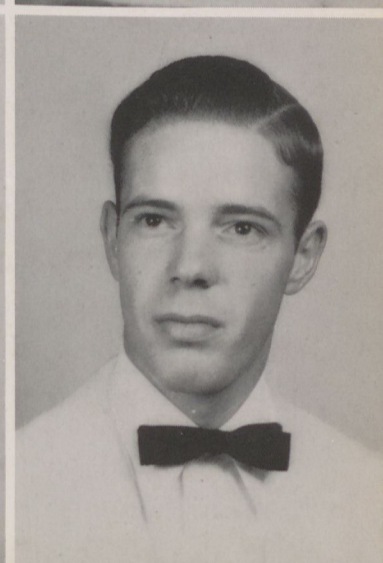
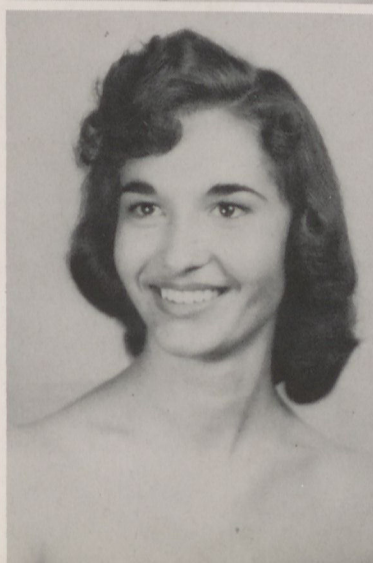
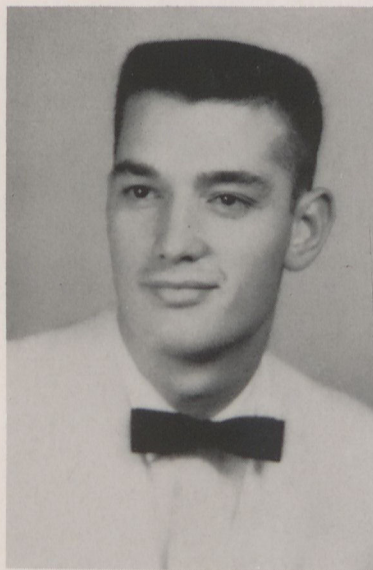
PEGGY MIDDLEBROOKS. Macon, Georgia.
Delta Society; S.N.E.A.; Tallulah; Pi Epsilon.

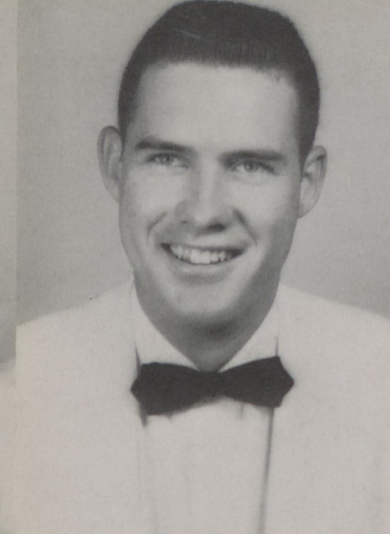
JIM MIDDLETON. Boonville, Indiana.
Day Students' Club, vice-president; Seminole.

SUSAN MOORE. Buford, Georgia.
S.N.E.A.; College Choir; Sophomore Class vice-president; Alpha Society, secretary, vice-president; Tallulah; Miss Circle K.

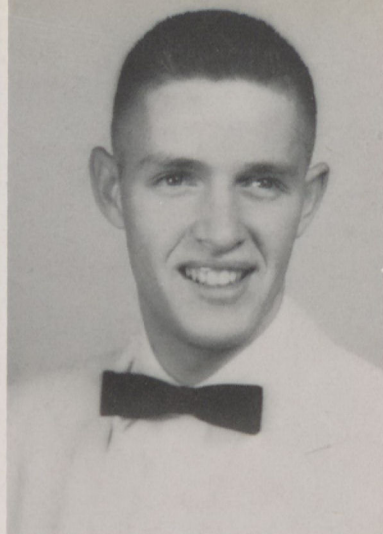
EVA MURPHY. Jasper, Georgia.
Alpha Society; Choctaw; B.S.U.

RONNIE NEWBERRY. Acworth, Georgia.
Apache; Pierce Society, secretary-treasurer; Hiltonian Staff, Editor; B.S.U., president; S.G.A.; I.R.C. Debater; Circle K Club; Religious Life Council; Blue and Gold Staff, Honorary Member.

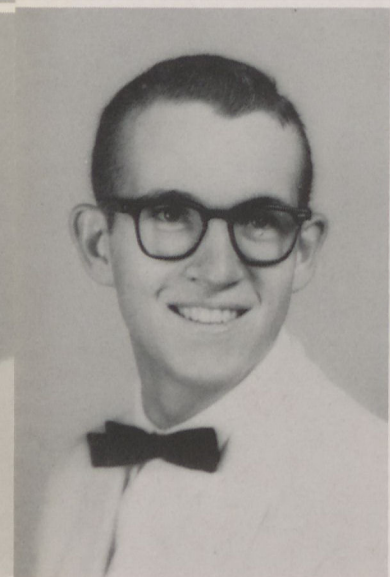




JERRY NEWTON. Cumming, Georgia.
Seminole; Tumbling Team.



GENE NORTON. Canton, Georgia.
Cherokee; Haygood Society; S.G.A.; Day Students'
Club, president.



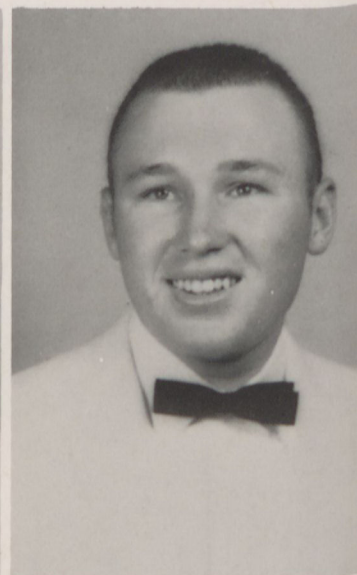
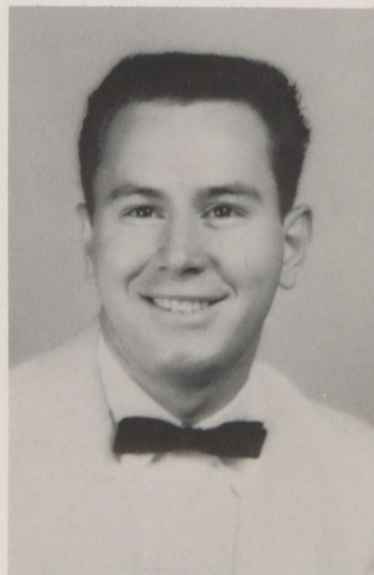
JIM OVEY. Marietta, Georgia.
Mohawk; College Choir; Haygood Society; M.S.M.
Council.



CHARLES W. PARKER. Calhoun, Georgia.
Pierce Society; Seminole; Tumbling Team.

BURL PATTERSON. Lafayette, Georgia.
Haygood Society; Mohawk; College Choir.

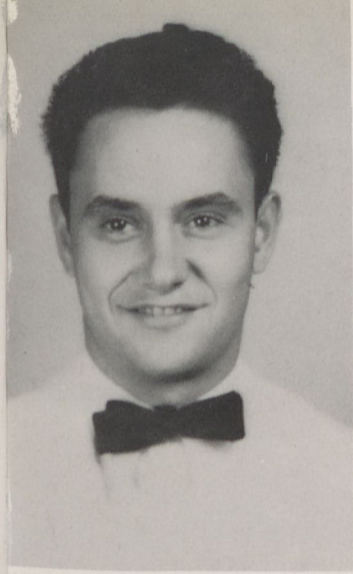
GARY PETRIE. South River, New Jersey.
Pierce Society; Cherokee.



EMILY PHILLIPS. Tifton, Georgia.
Alpha Society; Choctaw; S.N.E.A.; M.S.M.

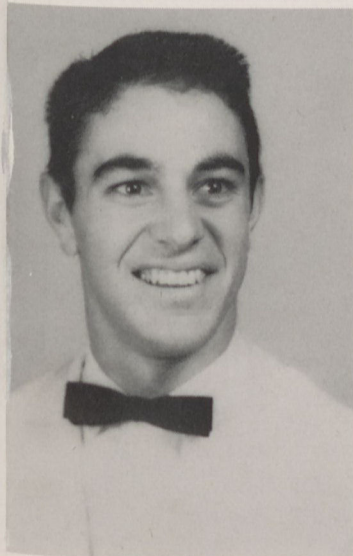
CAROLYN PLUMMER. Savannah, Georgia.
M.S.M. Council; Delta Society, vice-president; Choc-
taw; Hiltonian Staff, News Editor, reporter; President
of Fellowship Class; Who's Who.





HADEN PONDER. Ranger, Georgia.
Pierce Society; Seminole; Tumbling Team.

NAOMI PONDER. Canton, Georgia.
Choctaw; Alpha Society, secretary; Hiltonian Staff,
Business Manager; Day Students' Club, secretary.

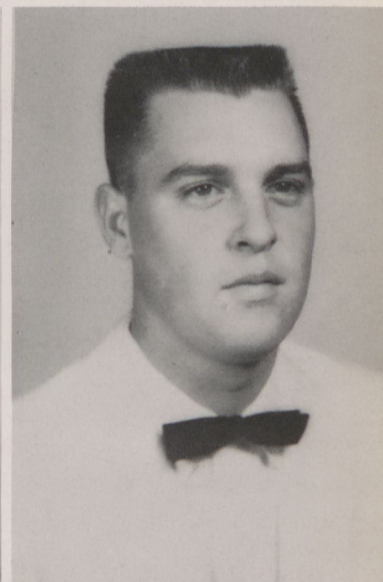


ROBERT RAY. Lyerly, Georgia.
Haygood Society, Chaplain; Seminole; M.S.M. Council;
Hiltonian Staff; I.R.C. Debater; Tumbling Team;
Circle K Club.

JULIANNE ROPER. Cartersville, Georgia.
Choctaw; Tumbling Team; S.N.E.A.; College Choir;
Delta Society; Ensemble; Girls' Trio.

SHELBY RUSK. Woodstock, Georgia.
Alpha Society; Tallulah; Hiltonian Staff, Assistant
News Editor; College Choir.

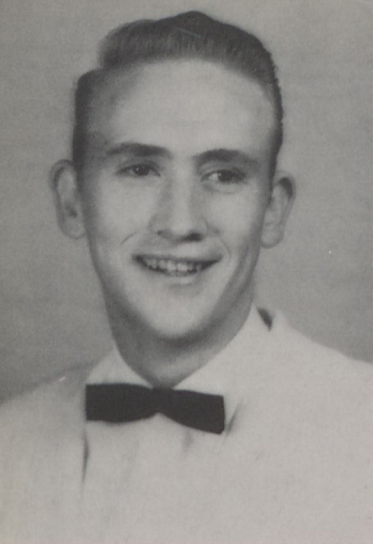
BOB RUSSELL. Sugar Valley, Georgia.
Mohawk; Pierce Society.



KALLIOPE "POPPY" SKANDALAKIS.
Athens, Greece.
Alpha Society; Choctaw; College Choir; Dramatic
Club.

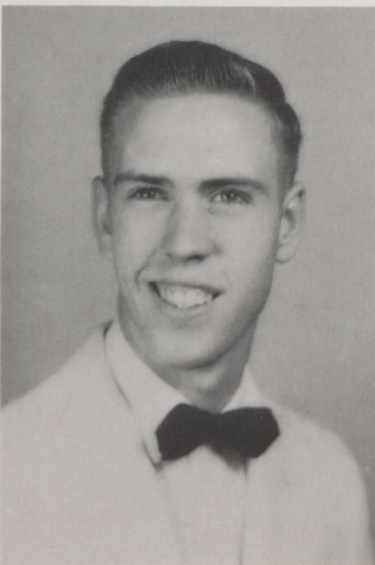
LORETA SINGLETARY. Ochlocknee, Georgia.
Choctaw; Alpha Society; Pi Epsilon, treasurer; Phi
Theta Kappa, secretary-treasurer; Dramatic Club;
Who's Who.





HAROLD SMITH. Buford, Georgia.
Pierce Society, president; debater; I.R.C. Debater;
S.G.A., president; Circle K Club; M.S.M. Council; Pi
Epsilon; Phi Theta Kappa; Who's Who.

PATSY ANN SMITH. Resaca, Georgia.
Alpha Society; Tallulah; College Choir; Dramatic
Club.



TINA SMITH. Atlanta, Georgia.
Dramatic Club; Alpha Society; Choctaw; S.N.E.A.

HOUSTON SPENCER. Calhoun, Georgia.
Apache; Haygood Society; Hiltonian Staff, Sports
Editor.

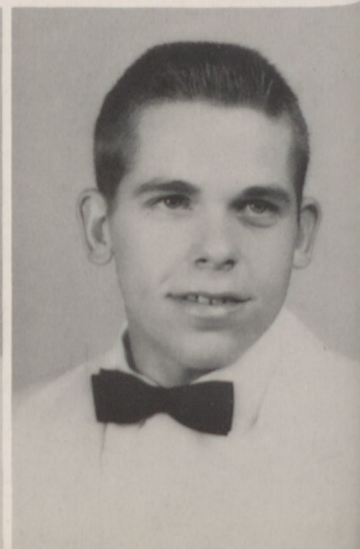
ANN STRAWN. Sugar Valley, Georgia.
Alpha Society; Tallulah; Pi Epsilon.

REBEKAH TATUM. Dawsonville, Georgia.
S.N.E.A.; Delta Society; Tallulah; B.S.U.



ALVIN TAYLOR. Conyers, Georgia.

AL THOMAS. Louisville, Georgia.
Seminole; Haygood Society; Sophomore Class vice-
president; Circle K Club; Dormitory Council, presi-
dent.





JOYCE WALLACE. Cumming, Georgia.
Alpha Society; Tallulah; Day Students' Club.

MARY JEAN WATKINS. Chatsworth, Georgia.
Tallulah; Alpha Society; M.S.M.

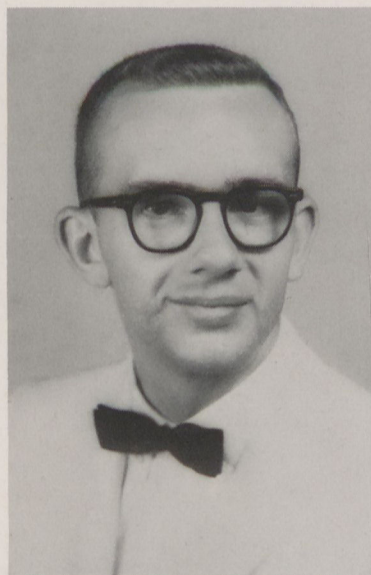


LOUISE WELLS. Ellijay, Georgia.
Tallulah; Alpha Society; M.S.M.

PATRICIA WEYMAN. Chatsworth, Georgia.
Alpha Society; Tallulah.

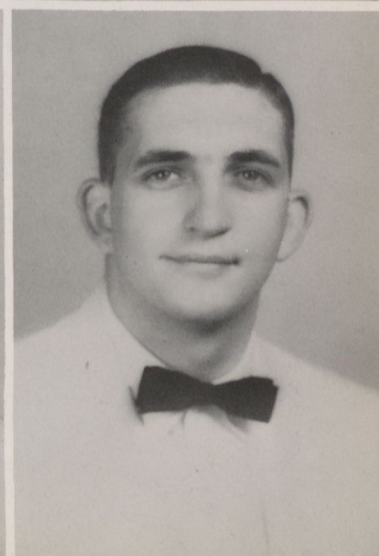
CHUCK WIGGINS. Warrenton, Georgia.
Haygood Society, president, secretary; Seminole; Sophisticats, drummer.

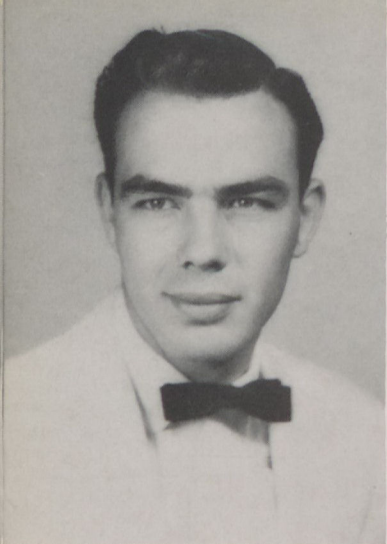
BECKY WILLIAMS. Woodstock, Georgia.
Alpha Society; M.S.M. Council; College Choir; Ensemble; Tallulah; Cherokee Phoenix Staff, Freshman Class Editor, Sophomore Class Editor.



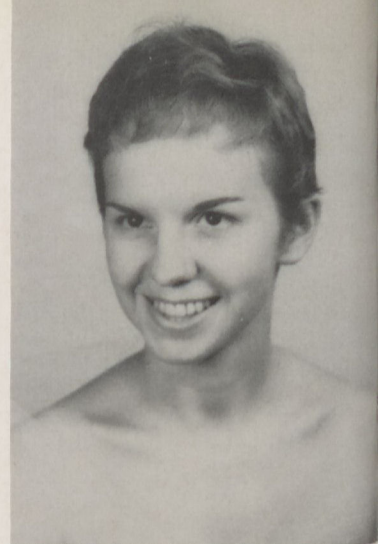
SANDRA WILLIAMSON. Atlanta, Georgia.
Delta Society; Choctaw; S.N.E.A.

JOHN C. WILSON. Woodstock, Georgia.
Cherokee; Day Students' Club.





JOHN HENRY WILSON. Atlanta, Georgia.
Haygood Society; Seminoles; Choctaw Coach; Tum-
bling Team.



MILDRED WOODY. Dalton, Georgia.
Delta Society; Choctaw.

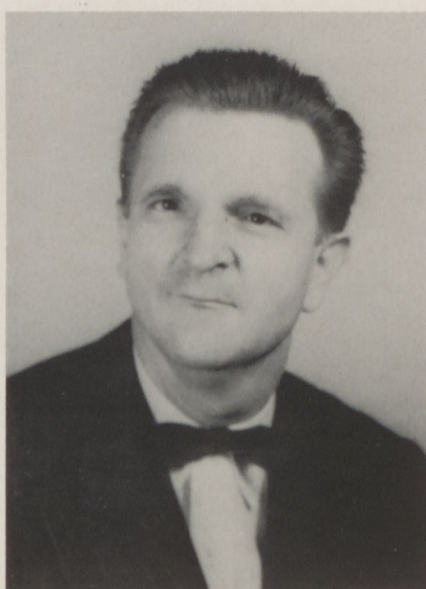


"We entered to learn... We will leave to serve."





<i>President</i>	Chester Gibson
<i>Vice-President</i>	Lanny Williams
<i>Secretary</i>	Ina Lou Bannister
<i>Treasurer</i>	Jackie Lamb

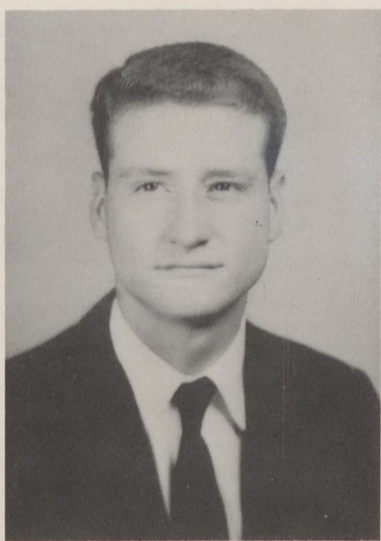


Mr. John Hays, Class Sponsor

Freshman Class



CECILE ADAMS
Canton, Georgia



JAMES BAGWELL
Canton, Georgia



ANNIE RUTH BANNISTER
Ball Ground, Georgia



INA LOU BANNISTER
Ball Ground, Georgia

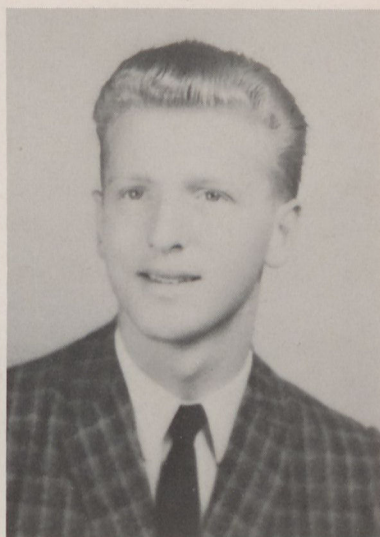


JO ELLEN BELL
White, Georgia

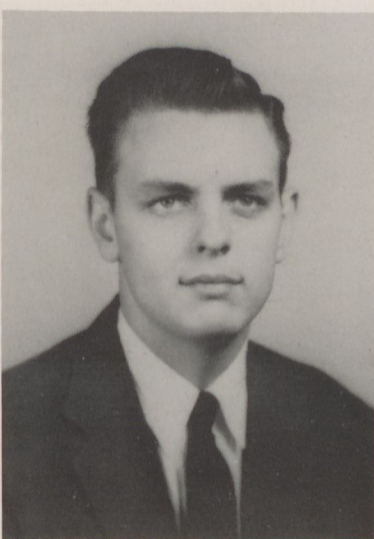
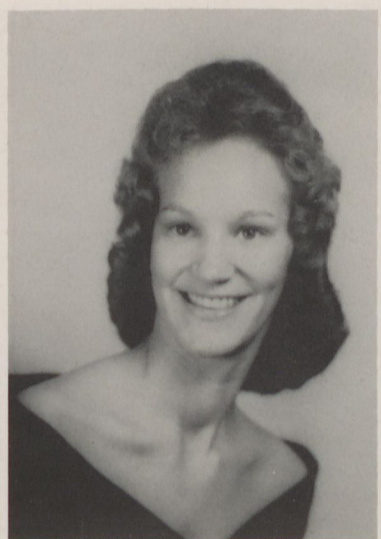
SHIRLEY BISHOP
Cartersville, Georgia



PAUL BARRETT
Cartersville, Georgia



HOWELL BELL
Etowah, Tennessee



JIMMY BLALOCK
Canton, Georgia



MICKEY BRINKLEY
Smyrna, Georgia



MARTHA BROWN
Rome, Georgia



ROBERT BROWN
Cartersville, Georgia



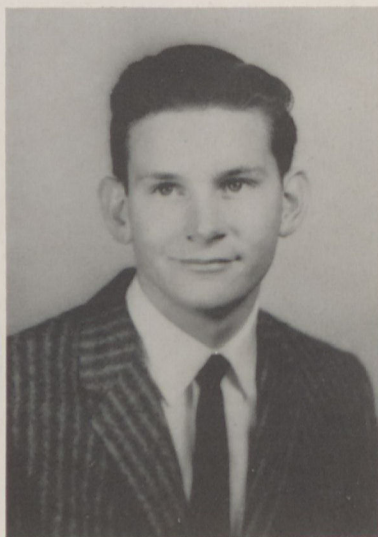
EDWARD BURCHFIELD
Dalton, Georgia



BUDDY BURNS
Ball Ground, Georgia



GRADY CAGLE
Canton, Georgia



HAROLD CANTRELL
Cartersville, Georgia

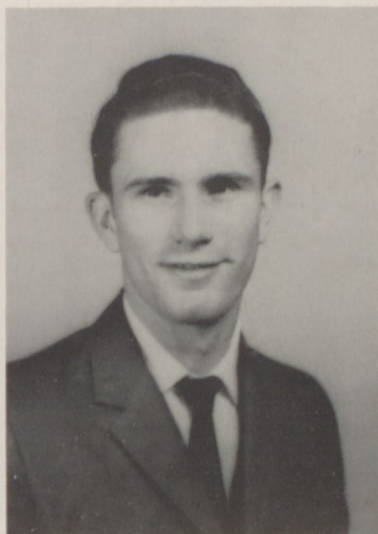


MARY ANN CANTRELL
Canton, Georgia

BILLY CANTRELL
Canton, Georgia

JEAN CARRUTH
Athens, Georgia

EDITH CAYLOR
Jasper, Georgia





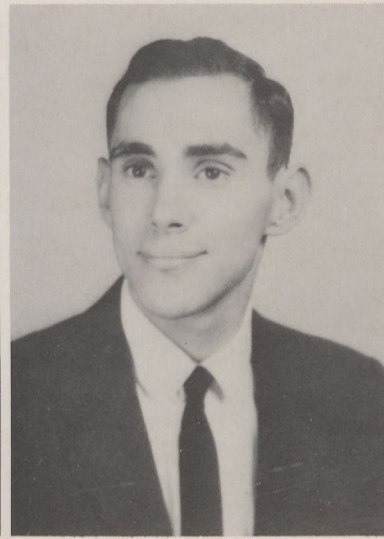
BOBBY CHANDLER
Winder, Georgia



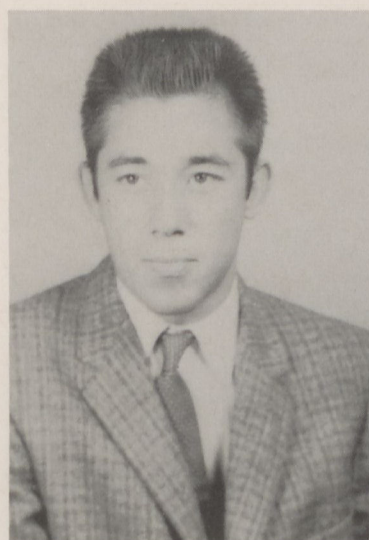
GARY COCHRAN
Nelson, Georgia



PATSY COCHRAN
Doraville, Georgia



IRA COLLINS
Marietta, Georgia

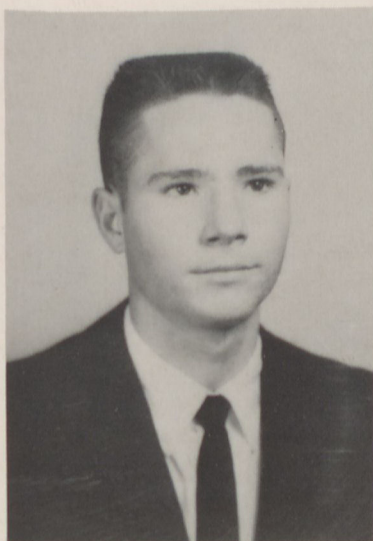


JERALD COLLINS
White, Georgia



OWEN COLLINS
Jasper, Georgia

RANDALL COLLINS
Mableton, Georgia



JETTY CONWELL
Uniondale, New York



FRANCES COOK
Dalton, Georgia



ROBERT CRAWFORD
Atlanta, Georgia





PAT DABBS
Emerson, Georgia



PAUL DAVIS
Moreland, Georgia



JACE DEBORD
Waleska, Georgia



ALICE DEMPSEY
Conyers, Georgia



SHARON DOUGLAS
Jacksonville, Florida



JOE DOVER
Lebanon, Georgia



JUDY DRAKE
Atlanta, Georgia

LYNDA DRENNON
Dalton, Georgia

ANN DUNCAN
Jasper, Georgia

GAIL DURDEN
Macon, Georgia





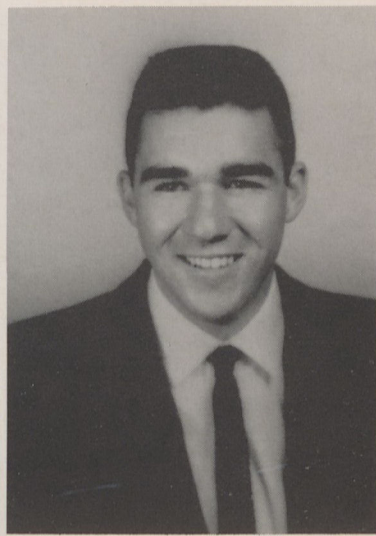
LOUIS DUPIN
Atlanta, Georgia



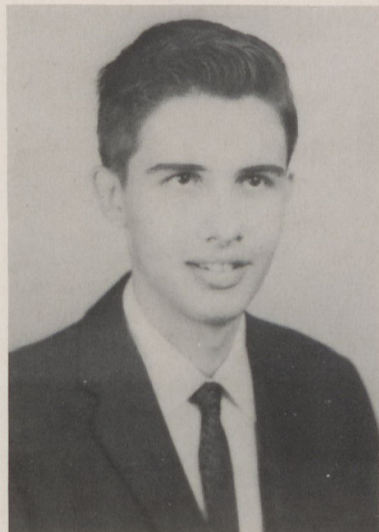
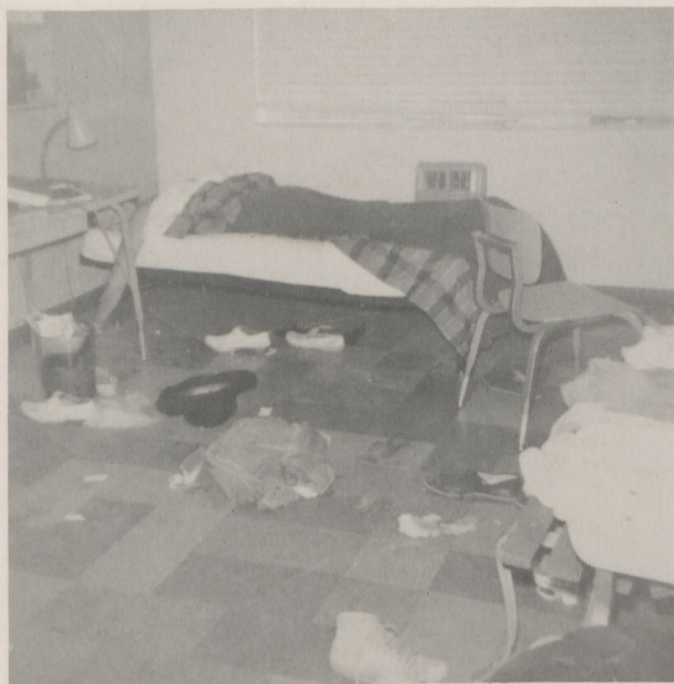
JOHN EIDSON
Atlanta, Georgia



BEULAH EXUM
Pavo, Georgia



CLARENCE FARRIBA
Ball Ground, Georgia



JOHN FLOWERS
Avondale Estates, Georgia



AUDREY FLOYD
Cumming, Georgia

DAVID FRISE
Douglasville, Georgia



RANDALL GANUES
Madras, Georgia



EDWIN GEORGE
Decatur, Georgia



CHESTER GIBSON
Acworth, Georgia

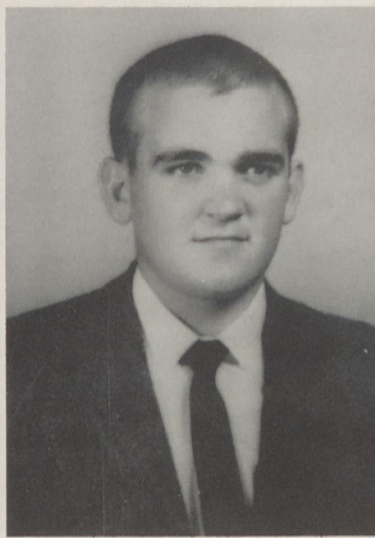




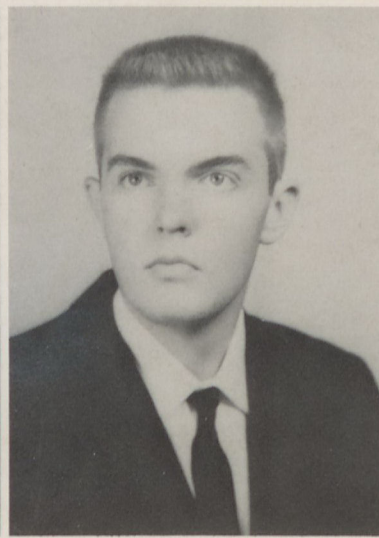
MARSH GOODYEAR
Decatur, Georgia



LANIER GRANT
Jasper, Georgia



GREGORY GALLMON
Chatsworth, Georgia



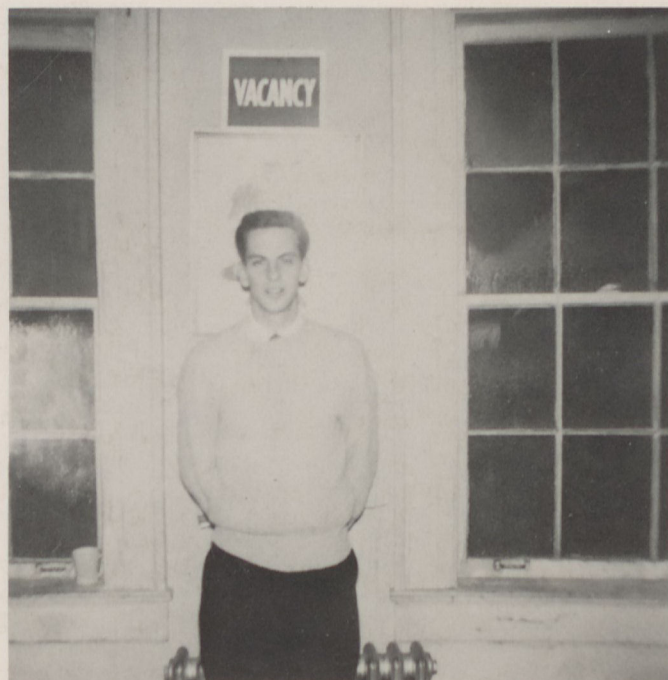
EDSEL HAMMONTREE
Jasper, Georgia



ALTON HARDY
Perry, Georgia



IRVIN HATCHER
Waleska, Georgia



JAMES HAYMANS
Hinesville, Georgia

LOIS HEMBREE
Canton, Georgia

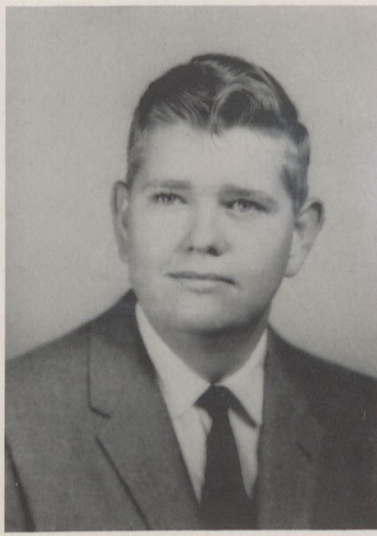
DORIS HENDERSON
Alpharetta, Georgia

HUGH HOLCOMB
Marietta, Georgia





BILLY HOOD
Alpharetta, Georgia



JERRY HOWARD
Stone Mountain, Georgia



MARYLIN HOWELL
Canton, Georgia



CECIL JACKSON
Rome, Georgia



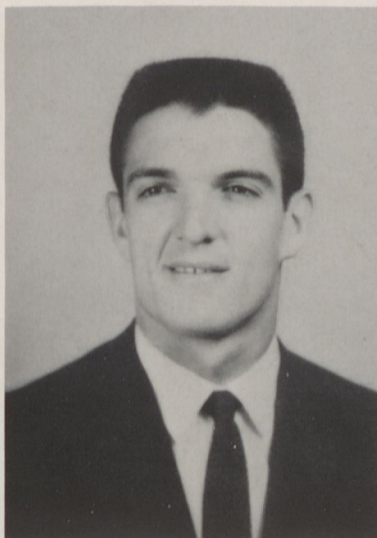
DIANE JOHNSON
Atlanta, Georgia



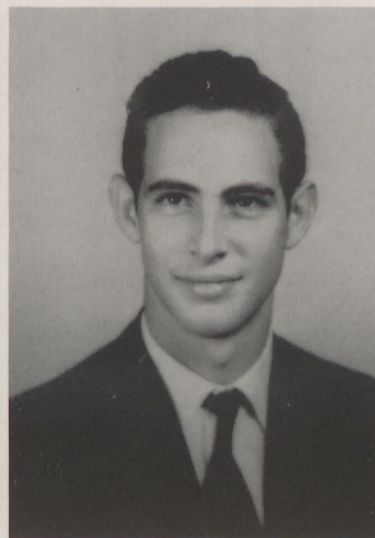
BENJI JOHNSON
Pine Lake, Georgia



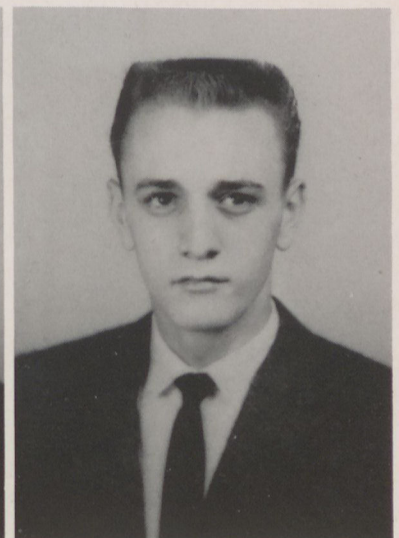
CLARA JOHNSON
Ball Ground, Georgia



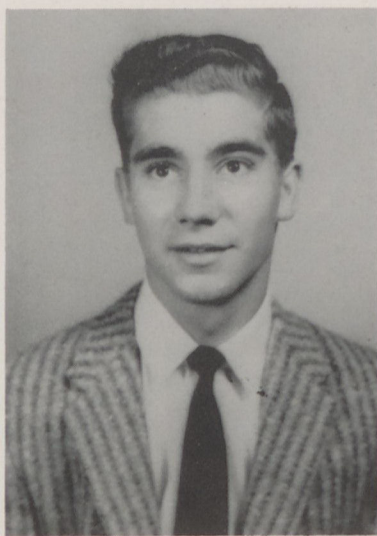
JIMMY JOHNSON
Tallahassee, Florida



JIMMY JUSTICE
Lincolnton, Georgia



CHARLES KIKER
Ellijay, Georgia



WAYNE KUYKENDALL
Acworth, Georgia



JACKIE LAMB
Lafayette, Georgia



BILL LAWSON
Ball Ground, Georgia



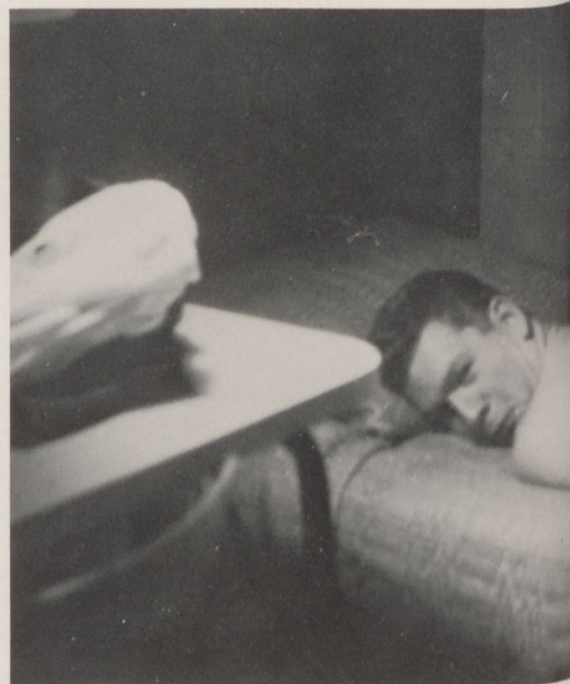
ROBERT LEONARD
Cartersville, Georgia



FRED LEWIS
Atlanta, Georgia



ELAINE LONG
Ranger, Georgia

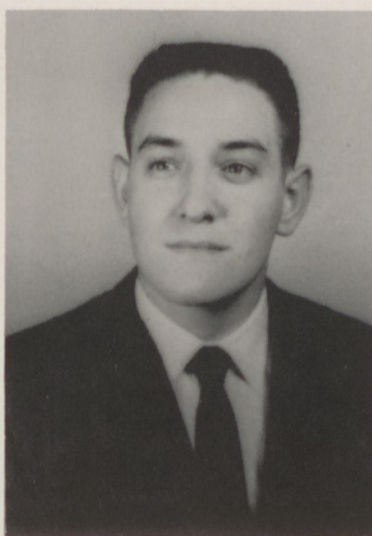


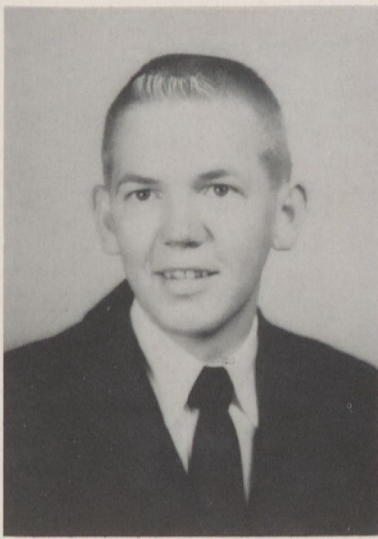
GARLAND LONG
Newnan, Georgia

HENRIETTA MADDOX
Griffin, Georgia

SUZANNE MARSH
Atlanta, Georgia

RONALD MARTIN
Cumming, Georgia





WAYNE MARTIN
Chatsworth, Georgia



HELEN SUE MATHIS
Alpharetta, Georgia



BETTY ANN McCLURE
Canton, Georgia



ANNE McDONALD
Atlanta, Georgia



PEGGY McINTOSH
Covington, Georgia



MICHAEL McLEOD
Dixie, Georgia

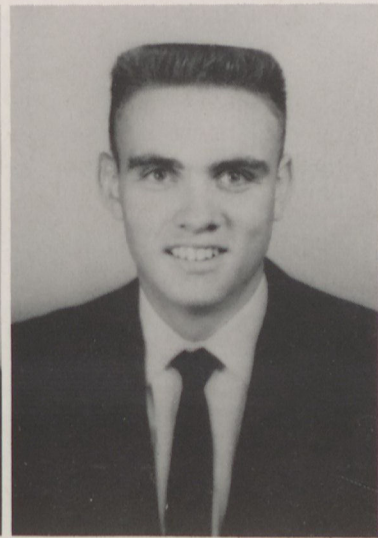
PAT McNALLY
Dalton, Georgia



KEN McNEELY
Decatur, Georgia



JOE MILFORD
Cumming, Georgia



BOB MOORE
Calhoun, Georgia





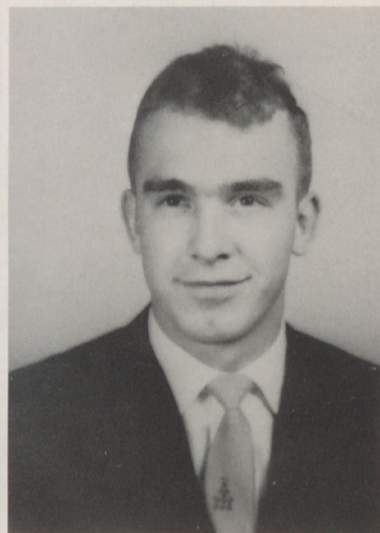
ROBERT MOORE
Athens, Georgia



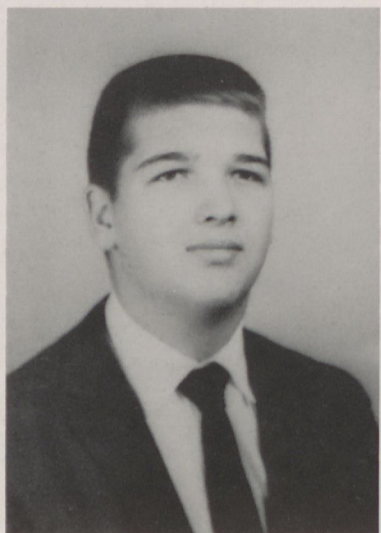
EDDIE MORRIS
Alpharetta, Georgia



LINDA NORRIS
East Point, Georgia



CHARLES ORR
Canton, Georgia



KENT OWINGS
Douglasville, Georgia



MAURNEEN OZMORE
Newnan, Georgia



WANDA PEEPLES
Chatsworth, Georgia

ALLAN PHILLIPS
Atlanta, Georgia

LYNN PHILLIPS
Royston, Georgia

JOAN PICKELSIMER
Fairmount, Georgia





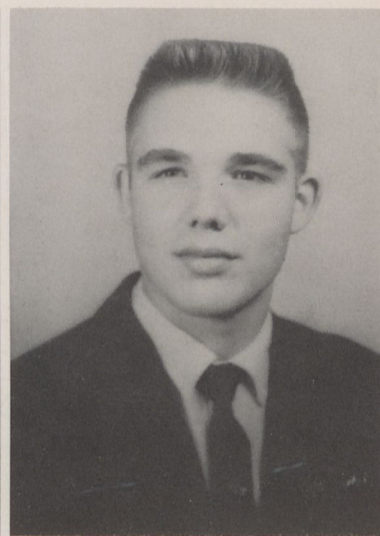
RICHARD POPE
Canton, Georgia



SARAH PORTER
Griffin, Georgia



ANNE PORTMAN
Atlanta, Georgia



ALLYN PRICHARD
Canton, Georgia



EUGENE QUARLES
Dalton, Georgia



BRUCE REED
Waleska, Georgia

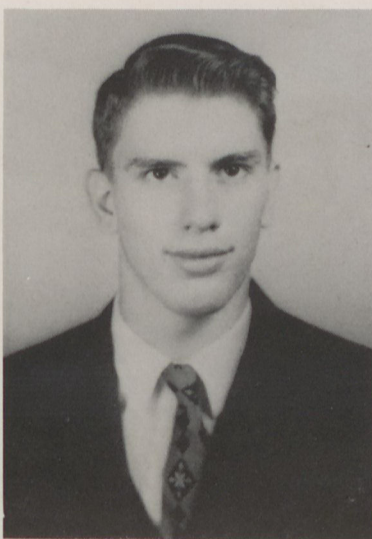
GLEND A REINHARDT
Atlanta, Georgia



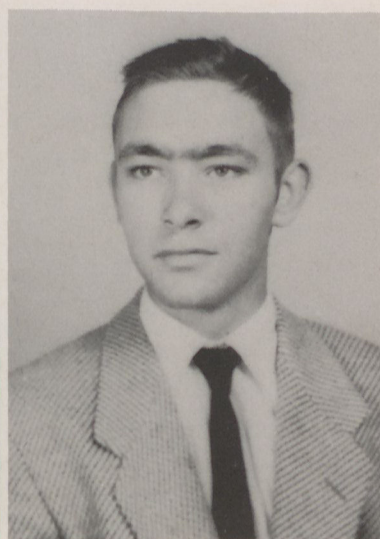
JO ANN RHODES
Canton, Georgia



GEORGE RIBBLE
Atlanta, Georgia



BILLY ROBERTS
Pine Log, Georgia





SUSAN ROBERTS
Atlanta, Georgia



JIMMY ROPER
Canton, Georgia



MARY RUTH SALES
Ellijay, Georgia



RICHARD SEGARS
Pine Lake, Georgia



J. B. SMITH
Powder Springs, Georgia



JOAN SMYLY
Decatur, Georgia

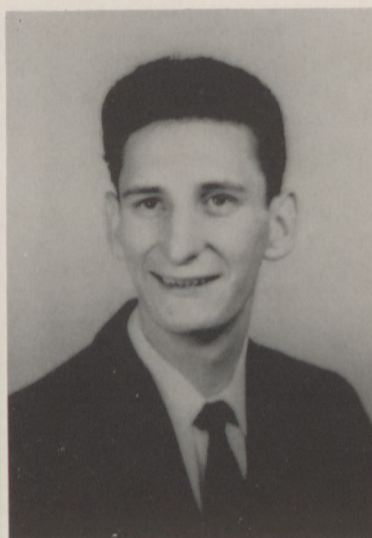
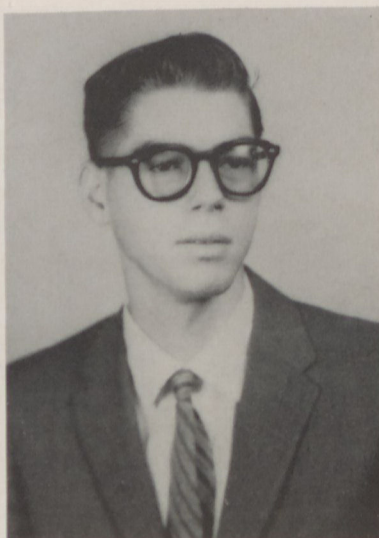
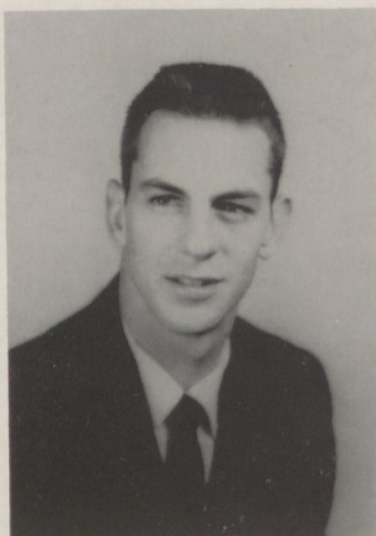


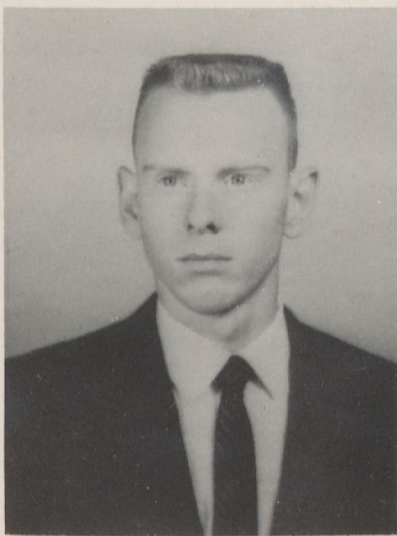
HENRY SNEED
East Point, Georgia

BILL SNYDER
Atlanta, Georgia

CHARLES SOSEBEE
Trion, Georgia

D'ORSAY STOVER
Atlanta, Georgia





LEN STURDIVANT
Raleigh, North Carolina



BRENDA SUMMER
Mountain View, Georgia



SANDRA SUTTON
Decatur, Georgia



GLENN TAYLOR
Jasper, Georgia



BERNICE VINSON
Homerville, Georgia



SANDY TAYLOR
Ranger, Georgia



ROSE TEEMS
Baxley, Georgia

BRENDA WALLACE
Chamblee, Georgia

JAMES WALLACE
Cumming, Georgia

BRENDA WEAVER
Cartersville, Georgia





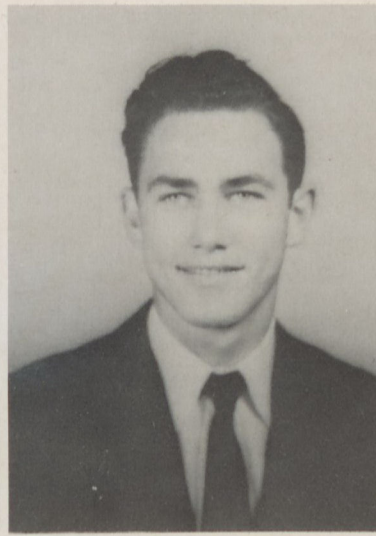
G. W. WEAVER
Marble Hill, Georgia



BOBBY WELCH
Ranger, Georgia



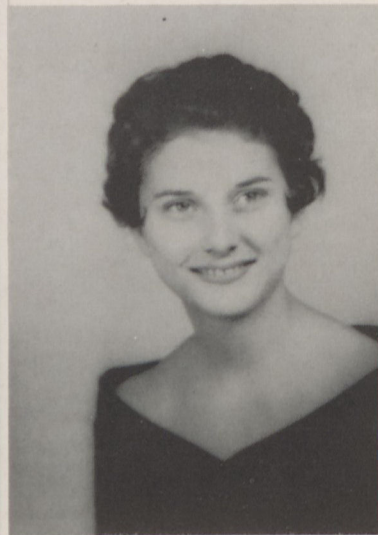
NANCI WELCH
Menlo, Georgia



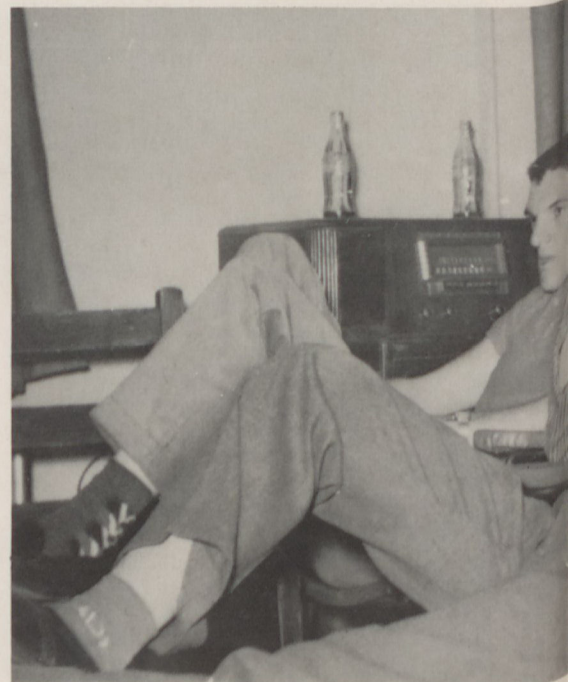
JEFFREY WELLS
Douglasville, Georgia



HILDA WHITAKER
Ellijay, Georgia



NEDRA WHITE
Dalton, Georgia



KENNETH WHITFIELD
Trion, Georgia

MACKEY WHITMIRE
Canton, Georgia

ALVIN WILLIAMS
Marietta, Georgia

LANNY WILLIAMS
Canton, Georgia





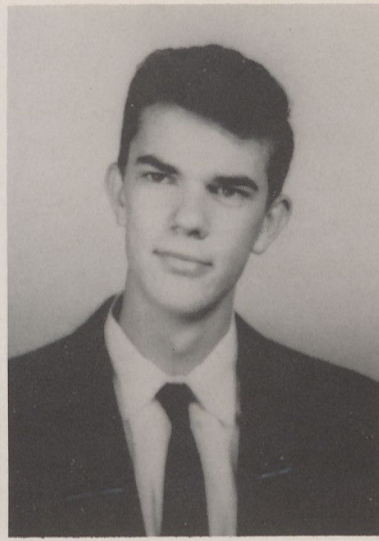
MAC WILLIAMSON
Cartersville, Georgia



JERRY WILLIS
Pine Log, Georgia



JANICE WOODY
Dalton, Georgia



KENNETH WYATT
Ball Ground, Georgia



CHARLES BANNISTER
Ball Ground, Georgia



BEVERLY YOST
Bellaire, Ohio



CHARLOTTE YOUNG
Decatur, Georgia



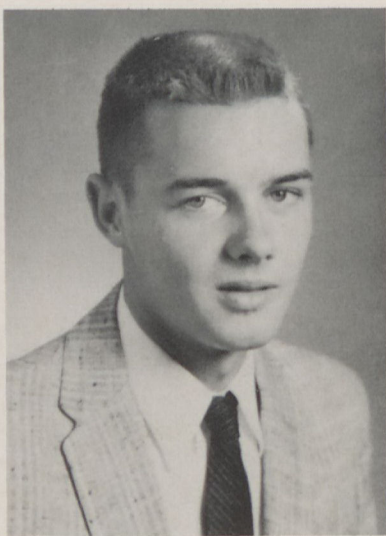
THOMAS CARTER
Logansville, Georgia



OSCAR ADAN DIAZ
Pinar del Rio, Cuba



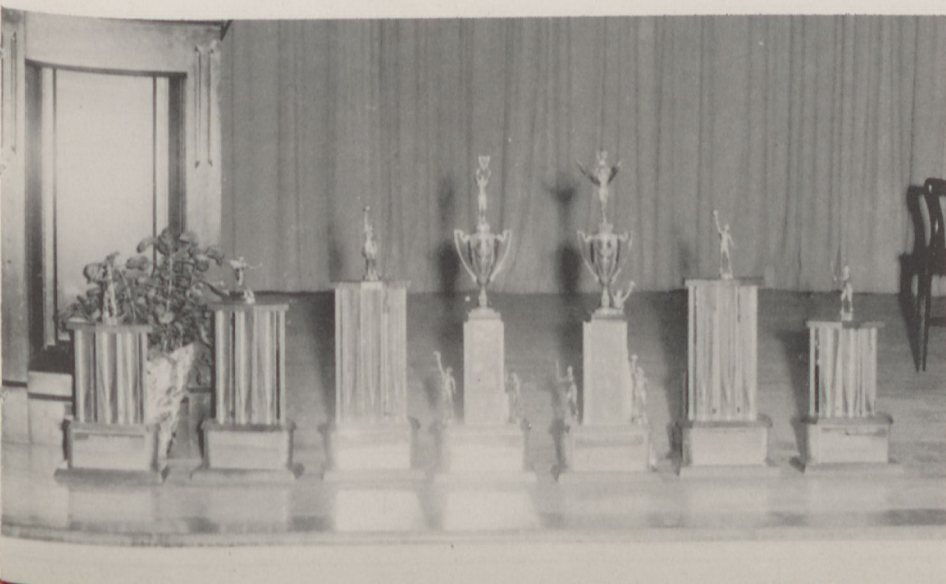
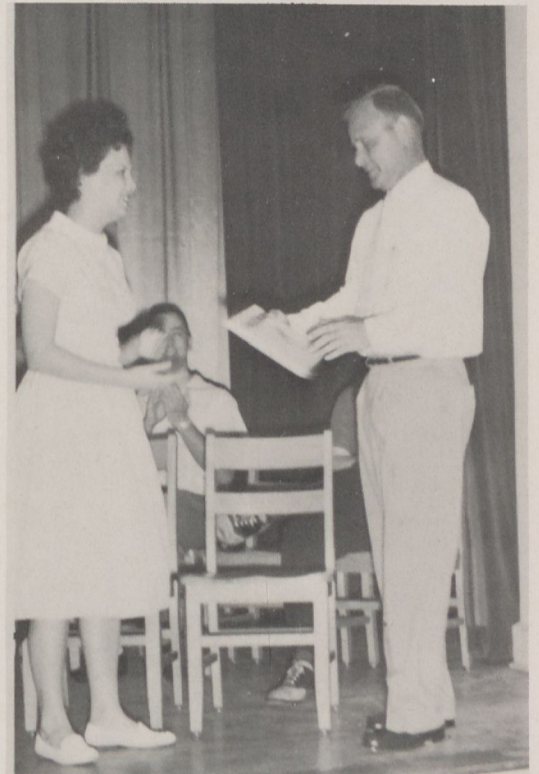
LLOYD EATON
Blue Ridge, Georgia



LAMAR NEWTON
Cumming, Georgia

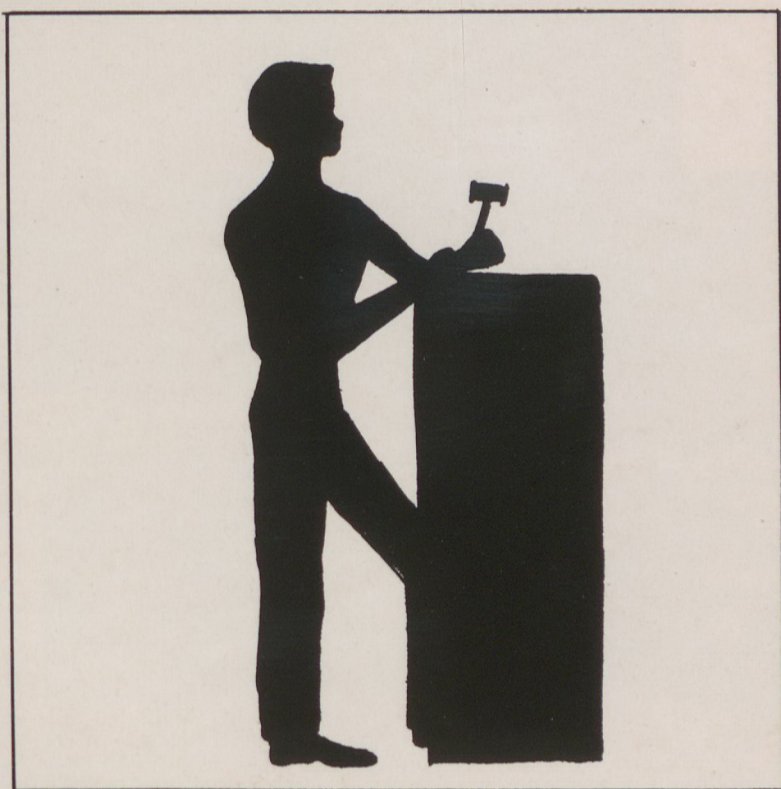


SUE ELLEN PAYNE
Canton, Georgia





O R G A N I Z A T I O N S



M. S. M. COUNCIL



Carolyn Plummer, Brenda Knight, Bobby Craven, Becky Williams, Miss Adams, George Coker, Harold Smith, Sara Jo Bookhardt, Joe Deen, Glenda Hawkins, Clovis Biggers, Jim Buchanan, Lowell Croft, Jackie Lamb, Jim Ovbey, Jo Ann Hawkins, Mary Jane Haley, Dean Clemmons, Jean Lancaster.



B. S. U. COUNCIL



Carolyn Jordan, Charlie Banks, Jackie James, Ronnie Newberry, Elaine Long.

S. G. A.



Harold Smith, Jim Buchanan, Jackie James, Dr. Rogers, Gene Norton, Hugh Boling, Ronnie Newberry, Bob Moore, Louis Hembree, Carole Ellis, Donna Atkinson, Mary Clemmons.



Dr. Rogers, Sponsor; Jim Buchanan, vice-president; Harold Smith, president; Donna Atkinson, secretary-treasurer.

PI EPSILON



Loreta Singletary, treasurer; Carole Ellis, president; Evelyn Hill, secretary; Sara Jo Bookhardt, Frances Eslinger, Peggy Middlebrooks, Faye Champion, Dean Clemmons, Donna Atkinson, Rosalyn Davis, Jean Lancaster, Mr. Collins, Advisor.

PHI THETA KAPPA



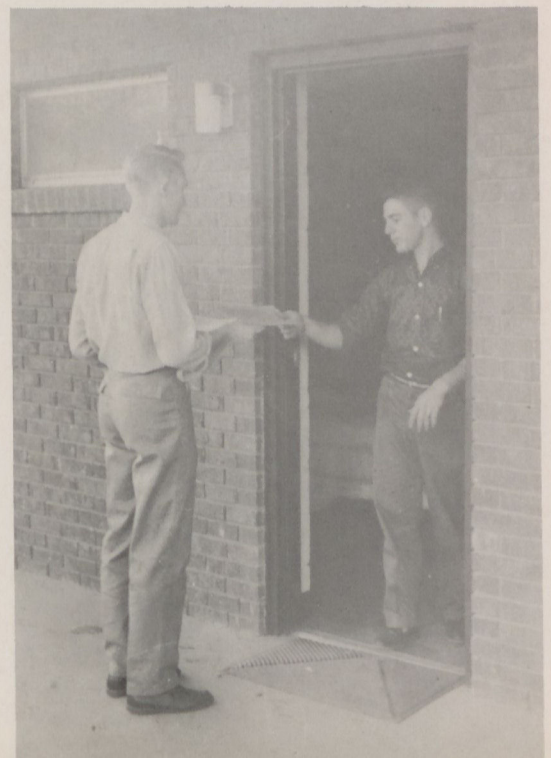
Evelyn Hill, Mr. Collins, Loreta Singletary, Faye Champion, Donna Atkinson, Harold Smith.

BLUE AND GOLD



Sara Jo Bookhardt, Miss Adams, Jean Lancaster, Dorothy Ma.

Harold Smith giving Robert Ray a copy of the Blue and Gold.



HILTONIAN STAFF



Lynn Phillips, Jerry Butler, Audrey Floyd, Naomi Ponder, Mildred Woody, Glenda Hawkins, Brenda Summer, Miss Croft, Frances Cook, Carolyn Plummer, Shelby Rusk, Mary Clemmons, Frances Brogdon, Edith Caylor, Buddy Autry, Houston Spencer, Frances Eslinger, Jo Ann Rhodes.



Miss Croft, Sponsor.
Ronnie Newberry, Editor.

S. N. E. A.



Myra Hammock, Bobby Craven, Jim Buchanan, Judy Drake, Jim Ovbey. *Second Row*, Carolyn Cleghorn, Carol Findley, Bill Lawson, Mary Ann Cantrell, Glenda Hawkins, Susan Moore, Rose Teems, Tina Smith. *Third Row*, Lois Hembree, Ina Lou Bannister, Sara Jo Bookhardt, Garland Long, Brenda Knight, Rosalyn Davis, Nedra

White, Marilyn Howell, Bernice Vinson. *Fourth Row*, Jean Carruth, Evelyn McCune, Charlotte Ellis, Lynn Phillips, Jo Ann Rhodes, Edith Caylor, Peggy McIntosh. *Fifth Row*, Jo Ellen Bell, Peggy Middlebrooks, Sandra Williamson, Betty Ann McClure, Joyce Davey, Dean Clemmons, Lowell Croft, Mrs. Burgess, Advisor.

FUTURE TEACHERS OF THE YEAR

Sara Jo Bookhardt

Dean Clemmons

Stunt Night





CHEROKEE

Becky Williams—*Sophomore Class Editor*

John Eidson—*Freshman Class Editor*

Brenda Knight
Art and Features Editor



Jackie Lamb
Editor
Winter and Spring Quarters





Business Staff
Carol Ellis
Lanny Williams
James Haymans

Nanci Welch, Organizations
Beverly Yost, Typist
Ann Latham, Typist



PHOENIX



Charlotte Ellis
Editor, Fall Quarter

Donna Atkinson
Business Manager



Joel Hopkins
Photographer



COLLEGE CHOIR



Janice Woody, Pat McNally, Lynda Drennon, Martha Sue England, Glenda Reinhardt, Dorsey Stover, Carolyn Jordan, June Dysart, Marsh Goodyear, Nanci Welch, Sandra Sutton, Anne Portam, Joan Smyley, Mr. Warren, Poppy Skandalakis, Patsy Smith, Becky Williams, Becky Starr,

Jean Carruth, Cecile Adams, Frances Brogdon, Jo Ellen Bell, Beverly Yost, Pat Dabbs, Sarah Porter, Julianne Roper, Charles Banks, Mickey Brinkley, Bill Lawson, Harold Cantrell, Ernest Meadows, George Coker, Ray Kundrak, Rick Pope, Jim Ovbey, Henry Sneed, Edwin George.



CIRCLE K CLUB



Mr. Collins, Jim Buchanan, Bob Moore, Lanny Williams, Joel Hopkins, Mickey Brinkley, Ken McNeely, Allyn Phillips, Chester Gibson, Harold Smith, Al Thomas, Larry

Daniel, Len Sturdivant, Charles Banks, Mackey Whitmire, Ronnie Newberry, Hugh Boling.



DRAMATICS SOCIETY



Louis Dupin, Patsy Smith, Ira Collins, Jeffery Wells, Judy Drake, Garland Long, Mary Ruth Sales, James Haymans, Bernice Vinson, Peggy McIntosh, Alice Dempsey, Susan Roberts, Cecil Jackson, Bobby Craven, Bobby Chandler, Ina Lou Bannister, Mary Ann Cantrell, Ann Duncan, Lois Hembree, Nedra White, Rose Teems, Joan Pickelsimer, Linda Norris, Marilyn Howell, Ann Lathem, Jo Ellen Bell, Lanny Williams, Shirley Bishop, Jetty Conwell, Temple Davis, Marsh Goodyear, Chester Gibson, Melo Childers, Charles Sosbee, Sarah Porter, Sharon Douglas, Carol Findley, Gail Durden, Rick Pope, Martha Arechavaleta, Mr. Singleton, advisor, Poppy Skandalakis, Fred Lewis.

DAY STUDENTS' CLUB



First Row: Mr. Jackson, Advisor, James Bagwell, Gary Cochran, Nita Dickerson, Nina Hill, Mary Ann Cantrell, Jo Ann Gilbert, Faye Champion, Naomi Ponder, Ann Duncan, Sandra Ballew, Joyce Wallace. *Second Row:* Buddy Burns, Jerry Wallis, Bill Lawson, Marie Spence, Barbara Jones, Melo Childers, Elsie Chadwick, Cecile Adams, Betty Ann McClure, Yvonne Harris, Annie Ruth Bannister, Helen Mathis, Joan Jabley. *Third Row:* Troy Brookshire, Allen King, Ronald Kennedy, Gene Norton, Jim Middleton, Bruce Reed, Billy Roberts, Harvey Grizzle, Hugh Holcomb, Rick Pope, Glenn Taylor, Joe Dover. *Fourth Row:* Lanier Grant, Stanley Dean, Mackey Whitmire, Kenneth White, Allyn Prichard, Donald Barnes, Grady Cagle, Allen Fossett, Ronald Martin, Edsel Hammontree, Hugh Boling, Robert Davidson. *Fifth Row:* Jimmy Roper, Kit Collins, Robert Leonard, Charles Hopkins, G. W. Weaver, Joe Milford, Bobby Cochran, Robert Brown, Jace Debord, Chigger Farriba, Mac Williamson, Jimmy Burgess, Bobby Tatum, Malcolm Goss, Dan Beck.

INTERNATIONAL RELATIONS CLUB



Frances Cook, Elaine Long, Hugh Boling, Frances Eslinger, Ann Latham, Harold Smith, Ronnie Newberry, Chester Gibson, Mr. Hays.

DELTA LITERARY SOCIETY



Sarah Porter, Pat Dabbs, Nanci Welch, Myra Hammock, Joyce Davey, Carolyn Plummer, Dean Clemmons, Donna Atkinson, Peggy McIntosh, Ann Portman, Alice Dempsey, Joan Smyley, Carolyn Cleghorn, Brenda Knight, Maurneen Ozmore, Rosalyn Davis, Gail Durden, Julianne Roper, Shirley Bishop, Marsh Goodyear, Beverly Yost, Jo Ann Rhodes, Edith Caylor, Lynn Phillips, Mary Ruth Sales, Mildred Woody, Joan Jabaley, Judy Drake, D'Orsay Stover, Patsy Cochran, Ann McDonald, Charlotte Young, Sandra Sutton, Brenda Wallace, Bernice Vinson, Sharon Douglas, Sandra Williamson, Susan Roberts, Carol Findley, Peggy Middlebrooks, Martha Sue England.





ALPHA LITERARY SOCIETY

Mary Clemmons, Frances Brogdon, Lois Hembree, Linda Hutchinson, Ina Lou Bannister, Linda Drennon, Diane Johnson, Frances Eslinger, Glenda Hawkins, Glenda Reinhardt, Cecile Adams, Annie Ruth Bannister, Doris Henderson, Clara Johnson, Martha Brown, Annette Haley, Pat McNally, Betty Ann McClure, Marilyn Howell, Ann Lathem, Beulah Exum, Evelyn Hill, Louise Wells, Mary Jean Watkins, Jo Ann Hawkins, Hilda Whitaker, Dorothy Ma, Charlotte Ellis, Jackie Lamb, Patsy Smith, Frances Cook, Shelby Rusk, Martha Archavaleta, Ann Strawn, Elaine Long, Jo Ellen Bell, Janice Woody, Martha Puckett, Marie Spence, Sara Jo Bookhardt, Linda Norris, Joan Pickelsimer, Rose Teems, Nedra White, Faye Champion, Jean Carruth, Jetty Conwell, Rebecca Hurley, Becky Williams, Ann Duncan, Mary Ann Cantrell, Jo Ann Gilbert, Brenda Cagle, Helen Mathis, Clovis Biggers, Poppy Skandalakis, Carolyn Jordan, Eva Murphy, Yvonne Harris, Joyce Wallace, Jackie James, June Dysart, Melo Childers, Mrs. Tribble, Mary Jane Haley, Susan Moore, Naomi Ponder, Carole Ellis.

Looks like initiation day, huh?



PIERCE



Gregory Gallmon, Temple Davis, Wayne Kuykendall, Lowell Croft, Paul Davis, Manuel Rodrickgrus, Chester Gibson, Louis Dupin, Rick Pope, James Wallace, Bobby Welch, Buddy Autrey, Wayne Martin, Ronnie Newberry, Bill Snyder, Joe Deen, Henry Sneed, Charles Parker, Billy Hood, Harold Cantrell, Lamar Newton, Harold Smith, Grady Cagle, John Flowers, Benjy John-

son, Malcolm Goss, George Ribble, Fred Lewis, Charles Banks, Howell Bell, Haden Ponder, Audrey Floyd, Ronald Martin, Ray Kandrak, Jerry Howard, Frank Roberts, Allen Fossett, Paul Barrett, Allyn Phillips, Sonny Williams, Mr. Rogers, Elton Jones, George Coker, T. W. Davis, Michael McLeod, Gary Petrie.



HAYGOODS



Leon Dyer, Houston Spencer, Jack McCoy, Allen Dorris, Charles Kiker, Ken McNeely, Bob Aldrich, Eddie Morris, Al Thomas, Joe Dover, Burl Patterson, Mr. Drummond, Chuck Wiggins, Jimmy Johnson, Bobby Cochran, Cecil Jackson, Raymond Meadows, Edwin George, Eddie Burchfield, Jerry Butler, Alvin Taylor, Gene Norton, Troy Brookshire, Richard Segars, Joel Hopkins, Larry Daniels, Kenneth Whitfield, Bobby Craven, Donald Knight, Garland Long, Bob Moore, Jimmy Justice, John Henry Wilson, Jeffrey Wells, Randall Ganues, Mickey Brinkley,

Allen King, James Haymans, Lanny Williams, James Bagwell, Mackey Whitmire, Allyn Prichard, Ira Collins, Robert Moore, Sandy Crawford, Kit Collins, Billy Cantrell, Len Sturdivant, Jimmy Roper, James Cason, Randall Collins, Bobby Chandler, Ernest Meadows, Kent Owings, Joe Milford, Jimmy Blalock, Buddy Burns, Kenneth White, Eugene Quarles, Hugh Holcomb, Bill Lawson, Len Sturdivant, J. B. Smith, Charles Sosebee, Clarence Farriba, Jimmy Burgess, Bruce Reed, Jim Buchanan, Alton Hardy.



Haygood Invitation Party

TALLULAH ATHLETIC TEAM



Nedra White, Jimmie Swarngane, Carolyn Jordan, Linda Hutchinson, Lois Hembree, Evelyn Hill, Big Chief; Jackie James, Ina Lou Bannister, Glenda Reinhardt, Joan Smyly, Susan Moore, Jean Carruth, Jetty Conwell, Peggy McIntosh, Lynn Phillips, Myra Hammock, Glenda Hawkins, Dianne Johnson, Mary Clemons, Beverly Yost, Sandra Taylor, Wanda Peebles, Sandra Sutton, Yvonne Harris, Becky Williams, Carol Ellis, Martha Ann Brown, Henrietta Maddox, Murl Seabolt, Sarah Porter, Maurneen Ozmore, Nanci Welch, Joan Pickelsimer, Ann McDonald, Pat McNally, Frances Cook, Charlotte Young.

CHOCTAW ATHLETIC TEAM



Jean Clemmons, Patsy Cochran, Gail Durden, D'Orsay Stover, Elaine Long, Doris Henderson, Ann Latham, Dean Clemmons, Sharon Douglas, Anne Portman, Pat Dabbs, Carolyn Plummer, Marsh Goodyear, Frances Brogdon, Lynda Drennon, Janice Woody, Poppy Skandalakis, Hilda Archevaleta, Bernice Vinson, Donna Atkinson, Edith Caylor, Brenda Wallace, Jo Ann Rhodes, Brenda Summer, Judy Drake, Brenda Knight, Julianne Roper, Shirley Bishop, Frances Eslinger, Big Chief, June Dysart, Eva Murphy, Rebecca Hurley, Susanne Marsh, Linda Norris, Marilyn Howell, Alice Dempsey.



SEMINOLE ATHLETIC TEAM



Paul Davis, Chester Gibson, Chuck Wiggins, Al Thomas, Allen Dorris, G. W. Weaver, James Haymans, Mickey Brinkley, Wayne Kuykendall, Billy Hood, Charles Banks, Larry Daniels, Bill Lawson, Jace Debord, Eddie Morris, J. B. Smith, Hugh Holcomb, Robert Ray, Kenneth Whitfield, Haden Ponder, Eddie Burchfield, John Henry Wilson, Jerry Newton, Grady Potts, Charles Parker, Charles Kiker, Joe Dover, Elton Jones, Charles Sosebee.



Action of the Seminoles and Cherokees

APACHE ATHLETIC TEAM



Ronnie Newberry, Jerry Butler, Louis Dupin, Lamar Newton, Harold Smith, Wayne Martin, Richard Segars, George Coker, Eugene Quarles, Lowell Croft, Audrey Floyd, Alvin Taylor, Len Sturdivant, Sonny Williams, Houston Spencer, Clarence Farriba, Alton Hardy, James Cason, Randall Ganues, Benjy Johnson, Randall Collins, Bruce Reed, Jack McCoy.



Action of the Apaches and Mohawks



CHEROKEE ATHLETIC TEAM

First Row: Ben Thompkins, Mackey Whitmire, Billy Cantrell, Henry Sneed, Fred Lewis, Ira Collins, Ernest Meadows, Ray Kundrat. *Second Row:* Jeffery Wells, Hugh Boling, Jerry Howard, Joel Hopkins, Gary Petrie, Raymond Meadows, Bobby Chandler, Irvin Hatcher, Gene Norton.

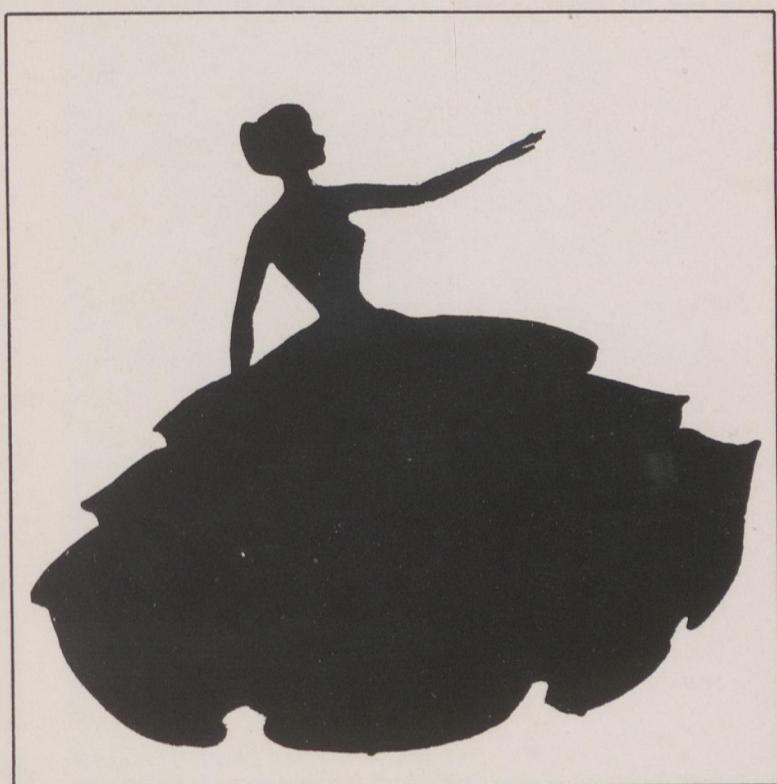


MOHAWK ATHLETIC TEAM

First Row: Jim Buchanan, Cecil Jackson, Edwin George, Burl Patterson, Ken McNeely, Bobby Craven, Robert Moore, Allyn Pritchard, Allyn Phillips, Donald Knight. *Second Row:* Stanley Deen, Paul Barrett, Temple Davis, Bob Moore, Bobby Cochran, Sandy Crawford, Jim Johnson, Kent Owens, Garland Long, Jim Ovbey, Harold Cantrell, Lanny Williams.



F
E
A
T
U
R
E
S





WHO'S WHO

Her bubbling laughter . . . Her willingness to be helpful . . . Her freely given talent . . . Her faithfulness in serving . . .

Each quality makes CAROLYN PLUMMER a worthy member of Reinhardt's Who's Who.

Devoted to his duties . . . Respected for his accomplishments . . . His efforts giving results . . . Placing loyalty above convenience . . .

For these reasons and for many others, we honor HAROLD SMITH as an outstanding student, scholar, and Christian.





WHO'S WHO

A sincere "Howdy" is better than a qualified "How do you do?" . . . "A man isn't poor if he can still laugh" . . . "In humility, count others better than yourself" . . .

These philosophies make CHARLES BANKS a member of Reinhardt's hall of fame.

Desiring much . . . Hoping for little . . . Demanding nothing . . . Witnessing by achieving . . . Walking with the Master . . .

Making LORETA SINGLETARY Reinhardt's pride and joy.





WHO'S WHO

For her never-ending dependability . . . For her admirable conscientious efforts in all things attempted . . . For her ready willingness to cooperate . . .

JEAN CLEMMONS has gained distinction.

For his dedication to his calling . . . For his willing service . . . For his friendly smile . . . For his inspiration to other students . . .

We pay tribute to GEORGE COKER.



WHO'S WHO

His never-ending smile . . . His sincere thought and manner . . . His versatility . . . His steadfast faith . . .

These qualities make JIM BUCHANAN a student to be remembered.



*"If ye have faith as a grain of mustard seed" . . .
"By their fruits ye shall know them" . . . "Happy
are they that keep justice, that do righteousness
at all times" . . .*

Because she lives by the Scriptures, we honor
MARY JANE HALEY.





WHO'S WHO

*When you smile the world smiles with you . . .
A keen wit will help you through many dark
valleys . . . have faith, hope, and charity, the
greatest of which is charity . . .*

Because she practiced these beliefs, **BRENDA
KNIGHT** ranks among the best.

*For her poise and graciousness . . . For her spirit
of cooperation . . . For her quietness and effi-
ciency . . .*

We give admiration and tribute to **DONNA
ATKINSON**.





Miss Circle K

SUSAN MOORE



King and Queen of Hearts

JACKIE LAMB

CHESTER GIBSON



May King and Queen

JAMES CASON

JEAN CARRUTH



Miss Haygood

MARY CLEMMONS



Miss Pierce

JOYCE DAVEY



Miss Reinhardt

BRENDA KNIGHT

... because you support and carry out by your life the high ideals and teachings of Christ ...

... because you respect and diligently follow the acquisition of an education ...

... because you love and serve with devoted talent your fellow men ...

... and because you very aptly represent the high type of girl found on our campus ...

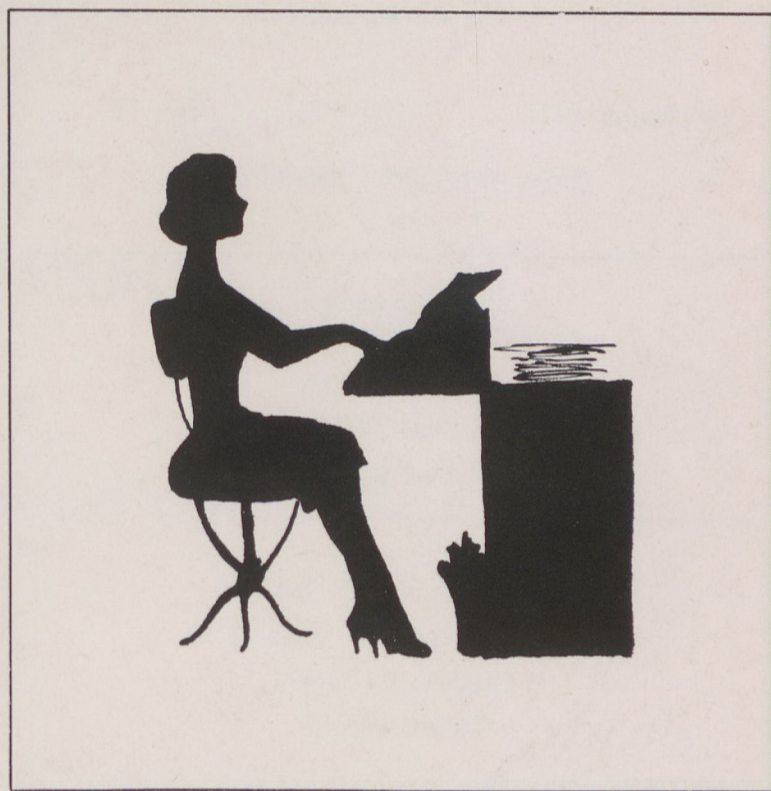
We honor you, Brenda Knight, with the title of Miss Reinhardt 1960.



Miss Reinhardt



A
D
V
E
R
T
I
S
E
M
E
N
T
S



pH OF MOST
GEORGIA SOILS
IS 5.5 TO 6.0

8.5-

8.0—

7.5-

7.0

6.5

6.0—

5.5-

5.0—

4.5-

RANGE
FOR
HIGHEST
PRODUCTIV-
TIVITY

RAISE YOUR P H FACTOR

With

WILCO

Dolomitic Limestone

Wilco Dolomitic Limestone will sweeten your soil until it tests pH 6.5 to 7, the range for highest productivity. It will also add the calcium and magnesium so vital to plant and animal life. Result: extra crops, healthier and more profitable livestock, and a better, all-around job of farming.

Wilco Dolomitic Limestone is produced by

WILLINGHAM-LITTLE STONE DIVISION

GEORGIA MARBLE COMPANY

11 Pryor Street, S. W., Atlanta 3, Georgia

HARRIS LUMBER COMPANY

All Kinds of Lumber
for All Purposes

Phone 4331

Box 38

BALL GROUND, GEORGIA

KEARLEY'S SERVICE STATION

GULF PRODUCTS

WRECKER SERVICE

Phone GR 9-2581 — Hwy. 5

KEARLEY AUTO PARTS

SERVICE STATION SUPPLIES

Telephone GR 9-2921

Canton, Georgia

CECIL L. INGRAM

INGRAM TRUCKING CO.

INGRAM TRUCK BODY

Ball Ground, Georgia

Cherokee County's Only Self-Service 5/10¢ Store

FAMBRO 5/10¢ STORE

"The store where you get your money's worth"

WESTERN AUTO ASSOCIATE STORE

I. S. OWINGS, Owner
DOUGLASVILLE, GEORGIA

**Compliments
of**

FAIRMOUNT

TELEPHONE COMPANY, INC.

CANTON COTTON MILLS

CANTON, GEORGIA

*Celebrating 60 years of service and progress
in the textile industry*

1899-1959



We Take Great Pride
in the continued growth and progress of

REINHARDT COLLEGE

Reinhardt is one of the greater assets of our county

P. W. JONES, JR.

PROTECTION—PLUS
PERSONAL SERVICE

Canton, Georgia

**SOUTHLAND
BUTANE, INC.**

Phone GR. 9-2151

SEE SOUTHLAND FIRST
FOR GULFTANE L. P. GAS
AND APPLIANCES

Marietta Highway
Canton, Georgia

TRIBUNE PRINTING CO.

Commercial Printing

Publishers of
North Georgia Tribune

**CANTON
WHOLESALE CO.**

Canton, Georgia

BOB LATHAM & SONS

Pure Oil Products
Canton, Georgia

**CANTON
CLEANERS & LAUNDRY**

CANTON, GEORGIA

PHONE GR 9-3113

GR 9-3114

Free pick-up and delivery service

All work finished in the plant



KESSLER'S

CANTON, GEORGIA

JOHN W. WHATLEY

DICK INSURANCE AGENCY

for
Safety-Security-Service

YOUR PROTECTION IS OUR
PROFESSION

LIFE

FIRE

CASUALTY

BOND

AUTOMOBILE

Canton, Georgia

Phone GR 9-4742

WESTERN AUTO STORE

CANTON, GEORGIA

BLAIR SUPER MARKET

YOUR RED DOT STORE

Marietta Highway

CANTON, GEORGIA

TANK CAR SERVICE STATION

Marietta Highway

CANTON, GEORGIA

WALLACE CHAMBERS

PLUMBING and HEATING

Canton, Georgia

SPARK'S FURNITURE CO.

Canton, Georgia

**L & L
GAS COMPANY**

Propane and Butane Gas

CANTON, GEORGIA

GR. 9-2163

J. T. Holbrook

R. L. Carmichael

**Holbrook & Carmichael
Motor Company**

Phone GR 9-4402

275 Marietta Street

CANTON, GEORGIA

**DOVER AND TATUM
MACHINE SHOP**

Canton, Ga.

Waleska Highway

GR 9-2601



BANK OF CANTON

CANTON, GEORGIA

RUSSELL-LACEY MANUFACTURING COMPANY INC.

Loop 'N' Tuft Products
Reversible Rugs and Bath Mats

PHONE 2000

FAIRMOUNT, GEORGIA



CANTON DRUG COMPANY

CANTON, GEORGIA

MORGAN BROTHERS

"Canton's Leading Appliance Store"
YOUR GENERAL ELECTRIC DEALER

Phone GR. 9-3171
CANTON, GEORGIA

Compliments

of

ATLANTA GROCERY CO.

144-50 Piedmont Avenue, S. E.

ATLANTA 3, GEORGIA

Phone JA. 2-9980

Distributors of the
Best in Institutional Size Products

YARBROUGH BROTHERS

Groceries and Fresh Meats

GR 9-2158 Main Street

Canton, Georgia

SHELLHORSE TRACTOR COMPANY

ROUTE 4, DALLAS HIGHWAY

PHONE EV. 2-6855

CARTERSVILLE, GEORGIA



**CHEROKEE FARMERS'
CO-OPERATIVE, INC.**

CLAY OWEN, Manager

Phone GR 9-2621
CANTON, GEORGIA

ETOWAH MAID

Milk and Ice Cream

FOR HOME DELIVERY

Phone GR 9-2351
CANTON, GEORGIA

HODGE

MORTAR — SAND — BLOCKS — STONE — GRADING
CONCRETE

"Any Job — Anywhere — Any Time"

HODGE MILLING COMPANY
CARTERSVILLE, GEORGIA

**BAKER FUNERAL
HOME**

CANTON AND WOODSTOCK, GEORGIA

STANDARD OIL CO.

R. Frye James, Agent

CANTON, GEORGIA

**FARMERS MUTUAL
EXCHANGE**

Feed, Seed, Fertilizer, Farm Supplies

CANTON, GEORGIA

GR 9-2041

Everything for the farmer

**GRIST - LANDERS
DRUG COMPANY**

CANTON, GEORGIA

"Let Us Fill Your Next Prescription"

**NEJASCO
FARMS**

for

Dairy Products

CANTON, GEORGIA

**ALLRED - JORDAN
DRUG COMPANY**



TATE, GEORGIA



View of Ladies' Department



View of Furniture Department

We count ourselves most fortunate in having been able to render a continuous service over the years to the student body and alumni of Reinhardt College.

We extend to you our very best wishes for continued progress and anticipate with pleasure your visits to us when in Canton.

JONES MERCANTILE COMPANY

CANTON, GEORGIA

Now in Our 81st Year Serving North Georgia

View of Hardware Department



View of Grocery Department





Member F. D. I. C.

ETOWAH BANK

CANTON, GEORGIA

Compliments of

**W. P. STEPHENS
LUMBER COMPANY**

"Stephens Quality Is Your

Best Assurance of Economy

AUSTELL MARIETTA ROSWELL

YOUR

FRIEND

LAWRENCE

COBB

Success to the graduating class



BOTTLED UNDER AUTHORITY OF THE COCA-COLA COMPANY BY

MARIETTA COCA-COLA BOTTLING COMPANY

PETTIT CLEANERS

Waleska Road
CANTON, GEORGIA

ALEXANDER STUDIO

Marietta Road
CANTON, GEORGIA

WORLEY'S SHOES

*"Shoes Styled for Men and Women
of Tomorrow"*
CANTON, GEORGIA

PINE CREST INN

HOLLY SPRINGS, GEORGIA

GOLD KIST POULTRY GROWERS

CANTON, GEORGIA

Canton's Choice

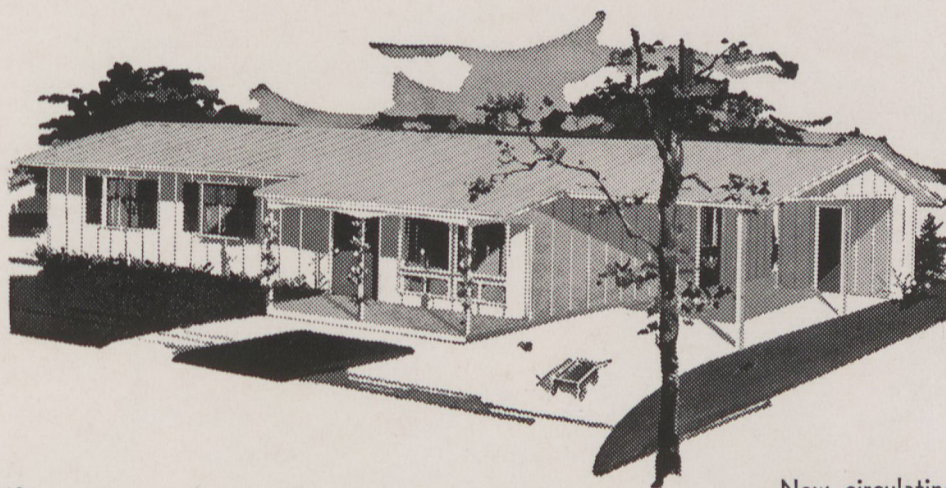
Ready-Cut

Fryers and Broilers

in

Individual Cartons

IN SEVEN NORTH GEORGIA COUNTIES ONE RADIO VOICE IS HEARD MORE THAN ANY OTHER -- THAT IS THE POWERFUL THOUSAND WATT VOICE OF **wchk** IN CANTON. THE REASON IS OBVIOUS. MORE PEOPLE HEAR MORE THINGS THAT INTEREST THEM ON 1290 THAN THEY DO ON ANY OTHER DIAL SETTING. WHEN YOU THINK OF SOMETHING THAT ALL OF THE PEOPLE SHOULD KNOW . . . BE IT CIVIC, SOCIAL, OR BUSINESS, YOU WOULD DO WELL TO MAKE SURE THAT IT IS ON **wchk** -- GEORGIA'S GOOD NEIGHBOR -- IN CANTON.



If
you earn \$90.00 per week
you can own the
Knox "PINECLAIR" in
VIKING maintenance-free
aluminum.

Knox Homes

New circulating floor plan, three bedrooms, walk-through bath, large living room, family room-kitchen, beautiful mar-proof cabinets, generous closets, outside storage and carport.

Ask your builder, or write
KNOX HOMES CORP.
125 Fulton Federal Bldg.
Atlanta 3, Ga.





THE WIGWAM

Reinhardt College
Where the Students Meet for Good Food
and Fellowship

SANDWICHES, SOFT DRINKS, CANDY,
BOOKS AND SUPPLIES

MRS. ADDIE CAGLE, Manager

Hewlett
PACIFIC ELECTRONIC CORP.

1963